



Woodland

Food

Chains



Woodland Food Chains

Teacher's notes

This activity can be run with varying degrees of complexity depending on the age and ability of your pupils.

For all versions, each child is given an animal character, e.g. print as a sticker/ on string.

You may also need lots of string, or tokens that represent energy that can be passed around/ along string/ from hand to hand.

Basic: Who eats who?

Pupils need to find another character they might eat, or that might eat them. Move around the room until you are in a group of 3 or 4.

Give each plant a ball/star/object representing energy. Roleplaying eating and passing the energy on.

Introduce the vocabulary,
predator, prey OR
producer, consumer, secondary consumer

Basic: Who eats what?

Pupils find someone who eats the same thing as them.

Introduce the vocabulary
producer, herbivore, carnivore, omnivore, detritivore (eats/ gains their energy from dead material e.g. beetle, fungus)

Intermediate: Food chain game

Pupils are all given a role.

Plants and dead wood are sited around the room with a supply of pegs, tags or tokens (energy).

Pupils can only take tokens from a creature they would eat. Gradually introduce secondary and tertiary consumers into the game. Who ends up with all the energy?

This can be simplified by using "characters" from just one food chain, or by only having three layers e.g. bluebells, aphids, ladybirds.

If using multi-coloured tokens and pegs, why not reveal a secret poison, that only acts when a character has three or more tokens of that colour (bio accumulation of chemicals, e.g. slug pellets kill hedgehogs)

Advanced: Rings game

Using the rings diagram, or a large version chalked on the playground floor.

Ask pupils to arrange themselves with the sun at the centre, and producers and consumers in concentric rings working outwards, linking up to the character they eat/ are eaten by. They will soon discover that they need to create loop back into the middle because of the detritivores!

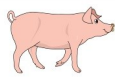
What happens if one character is removed? E.g. a tree, the sun? Lay down if you are dead. Nb. It is sometimes difficult to see the patterns from the inside of the circle. Get one or two pupils to be directors, or video the others, then play it back so pupils can be part of the pattern and then look at it from the outside.

Advanced: create your own food chain game and rules!

Asking pupils to create their own game is great for teamwork and negotiating. It shows which pupils have understood the flow of energy and provides a good chance to reflect on “what happens in reality”. E.g. animals need to use up energy to move around at different speeds, where does this energy go? How much time do animals have to spend eating? However, you will need a lot of tokens to make these versions work!



Acorns



Pig



Holly



Pony



Grass



Rabbit



Fox



Foxgloves



Bee



Honey buzzard



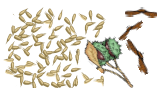
Dead leaves



Worm



Hedgehog



Seeds



Mouse



Owl



Berries



Blackbird



Goshawk



Dead wood



Stag beetle



Badger



Leaves



Moth



Bat



Dead wood



Mushrooms



Deer



Bluebells



Aphid



Ladybird



Dead wood



Fly



Spider



Robin



Leaves



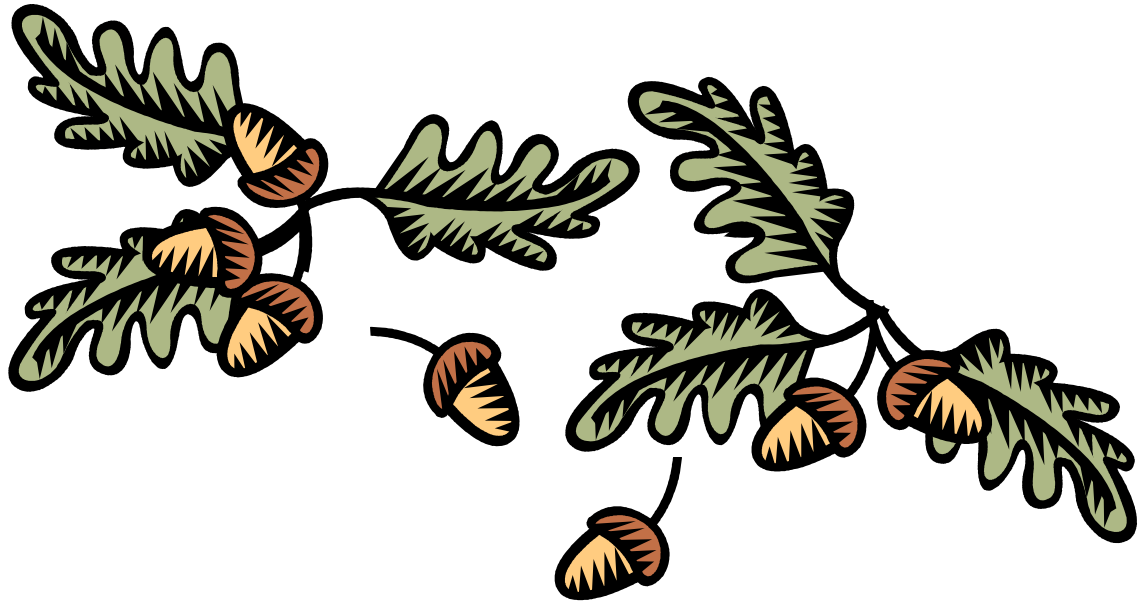
Caterpillar



Blue tit



Sparrowhawk



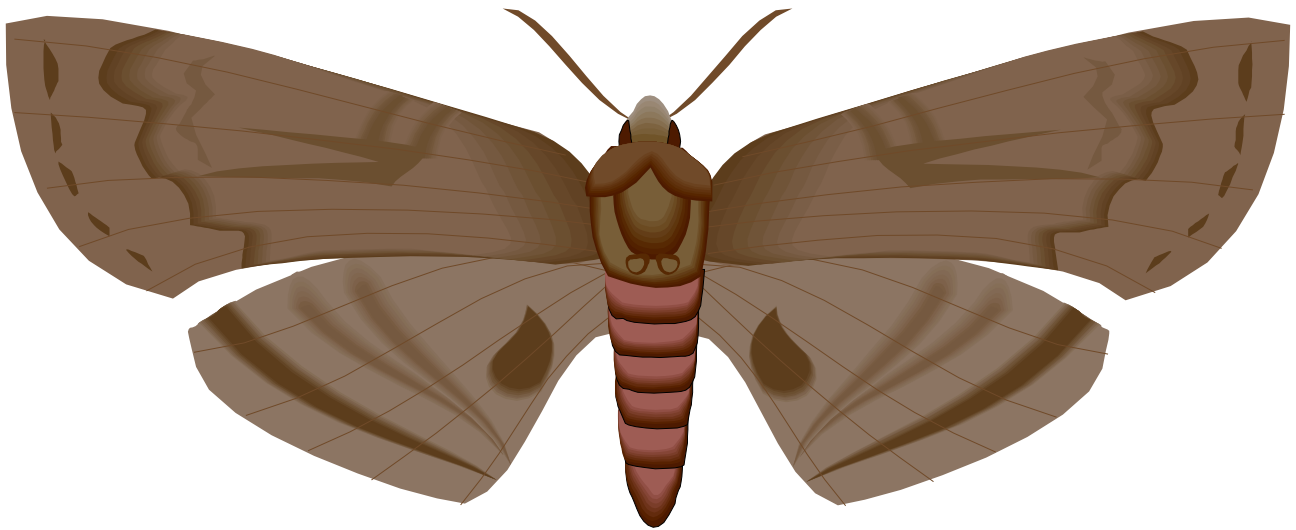
Acorns



Grass



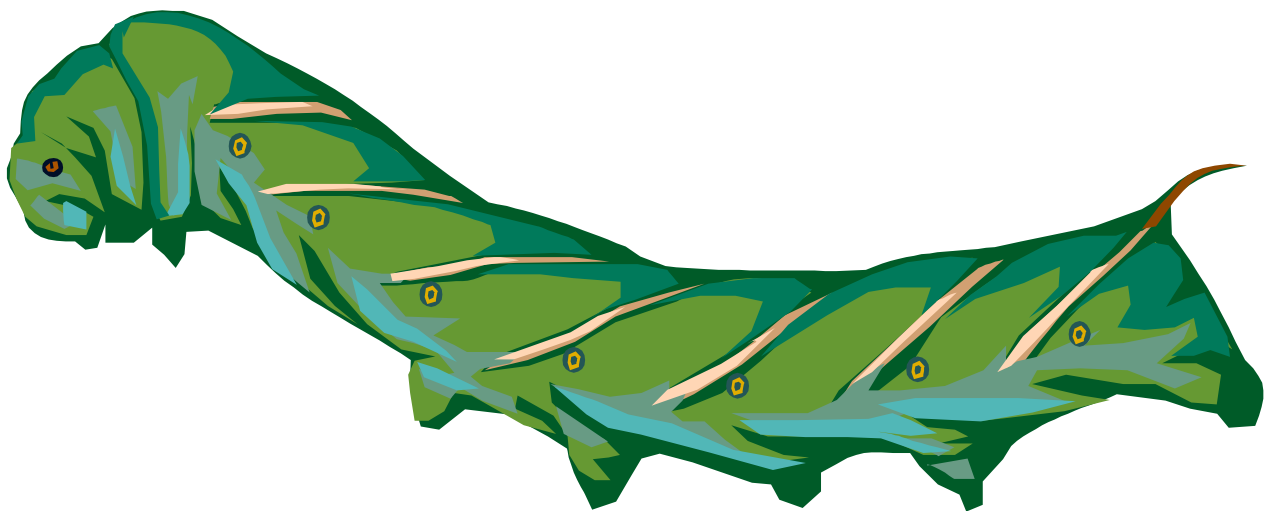
Bat



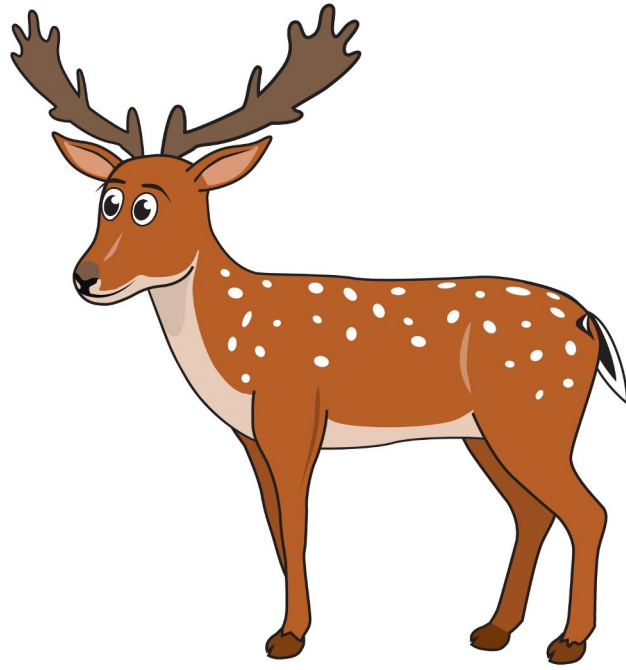
Moth



Badger



Caterpillar



Deer

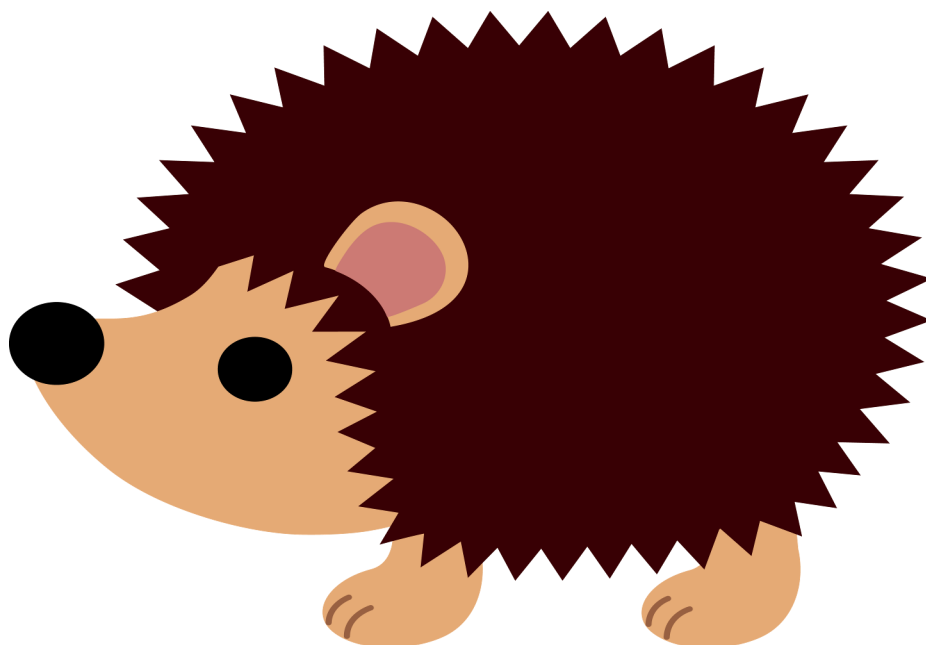


Fly

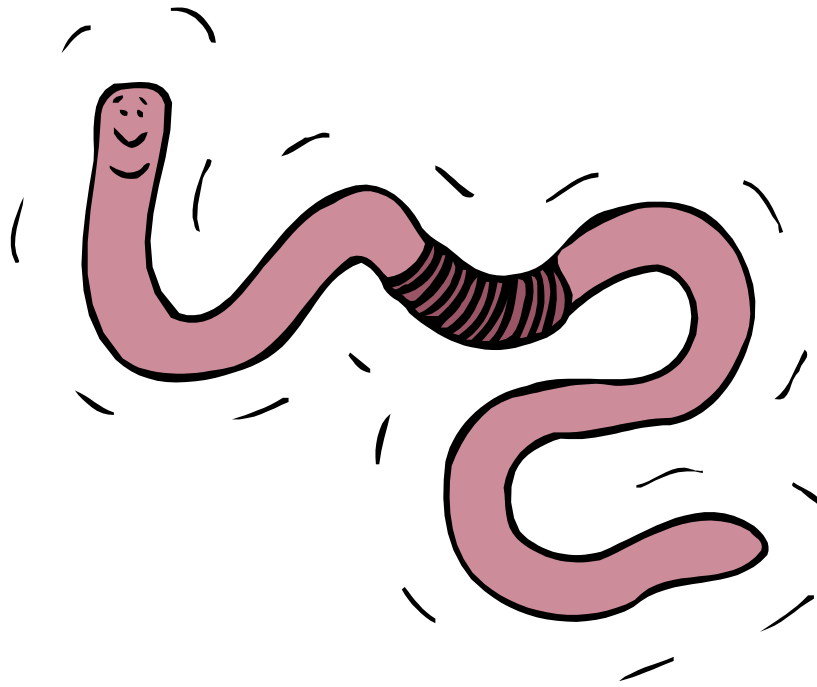
Image: RSPB



Goshawk



Hedgehog



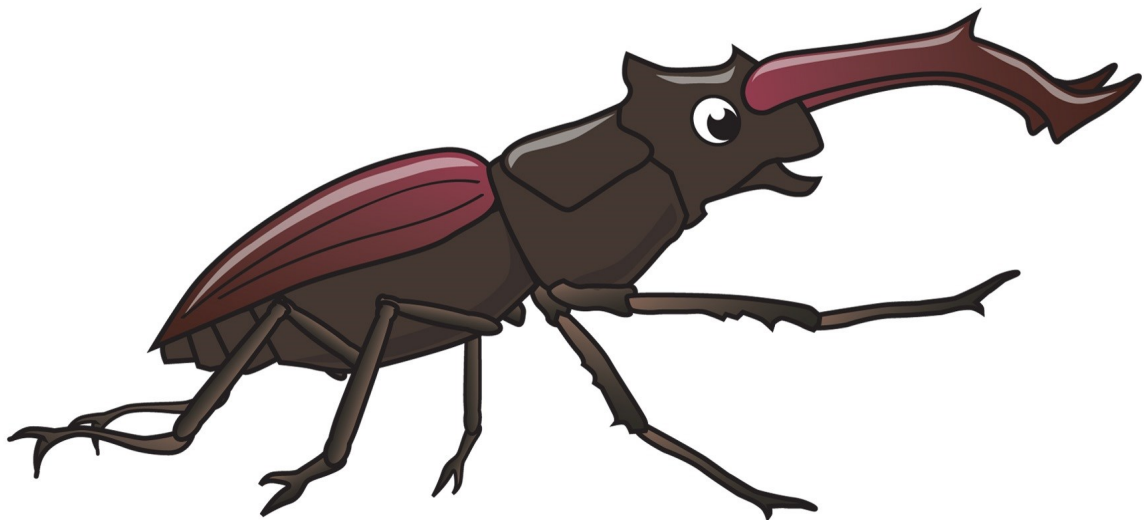
Worm



Dead leaves



Ladybird



Stag beetle



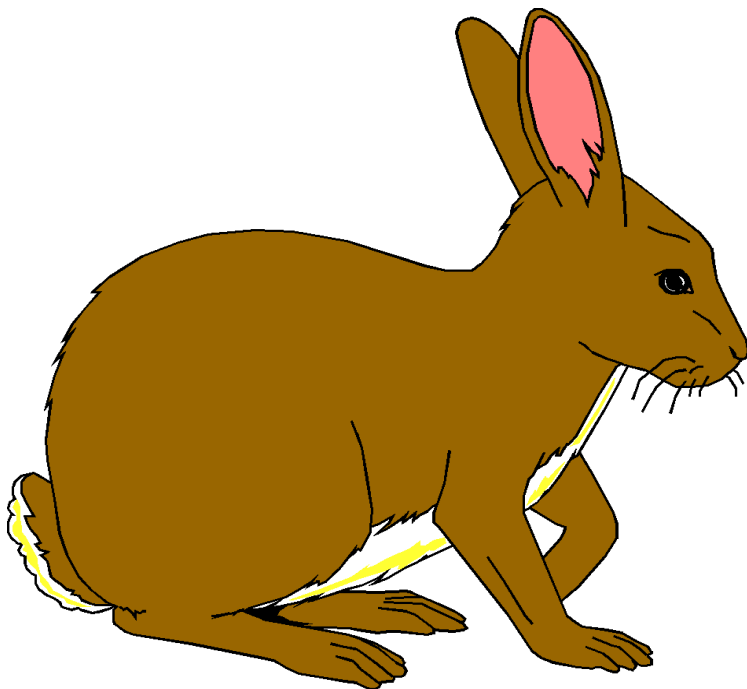
Mouse



Leaves



Owl



Rabbit

Image: RSPB



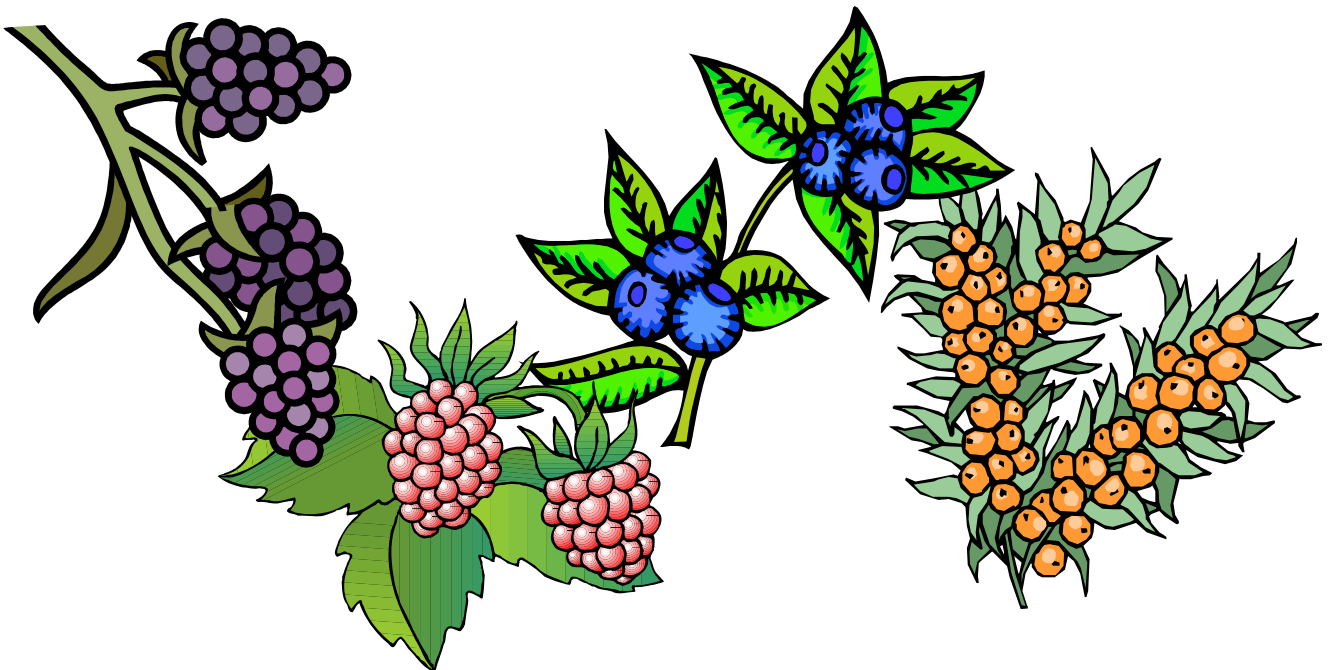
Blackbird



Spider



Seeds



Berries



Bluebells

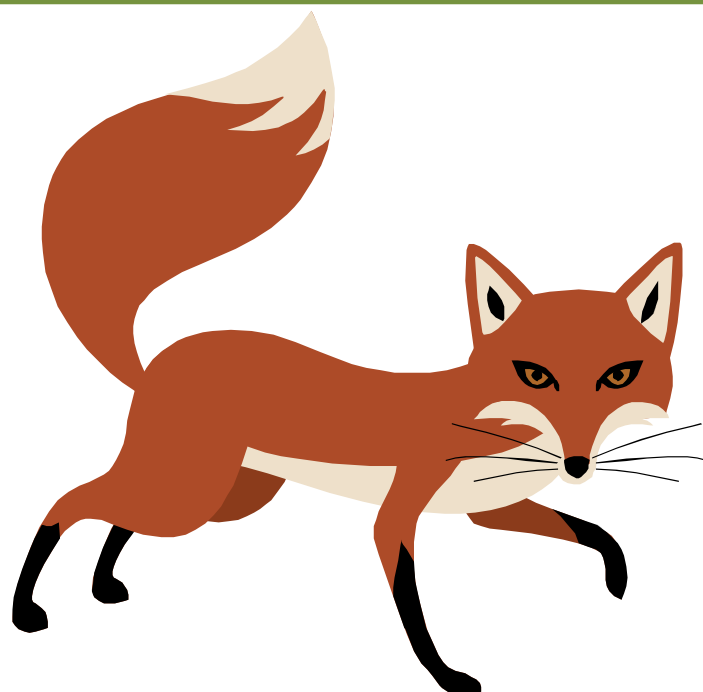


Bee

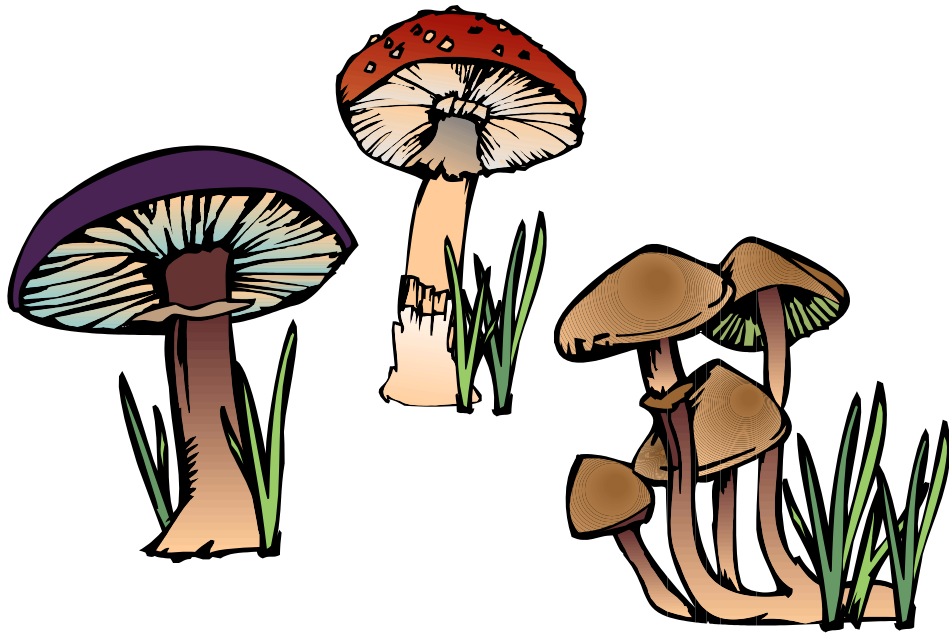
Image: RSPB



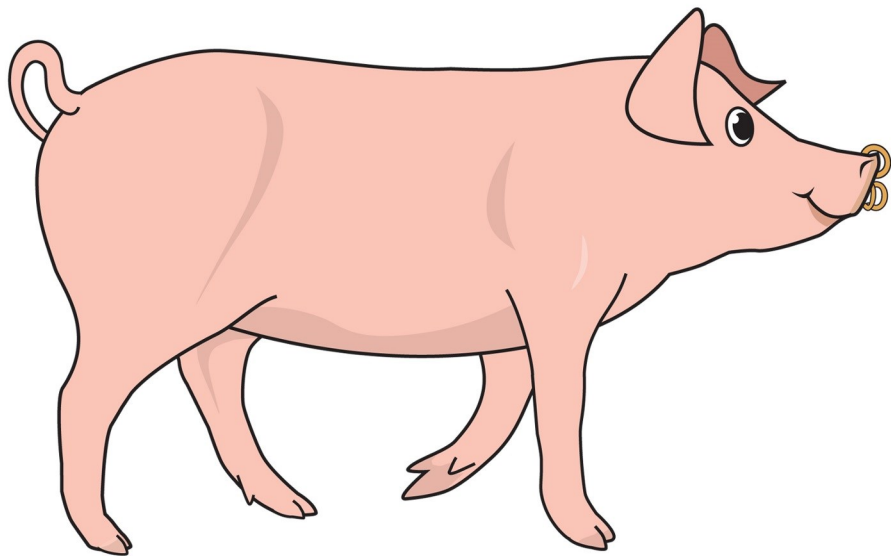
Honey buzzard



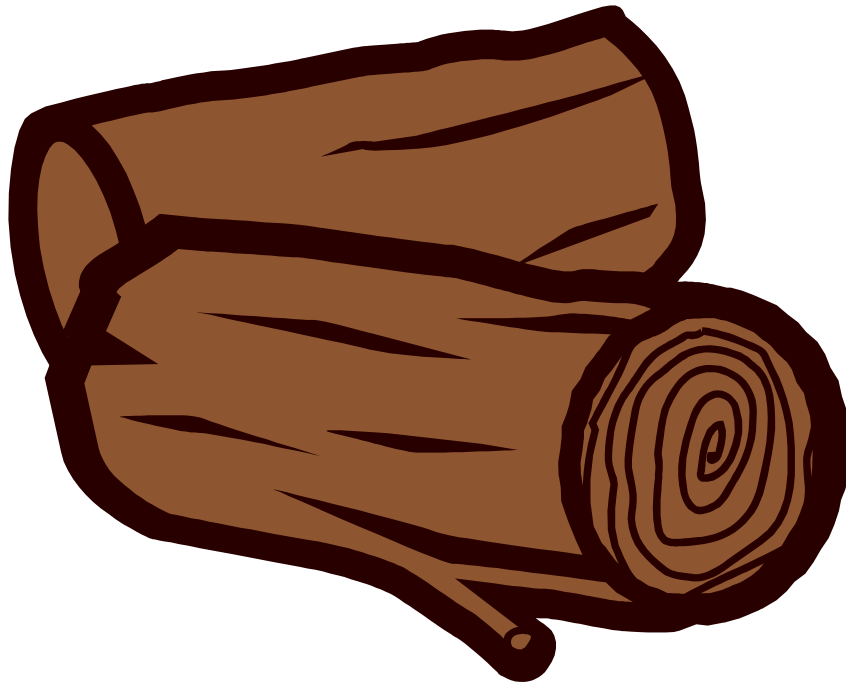
Fox



Mushrooms



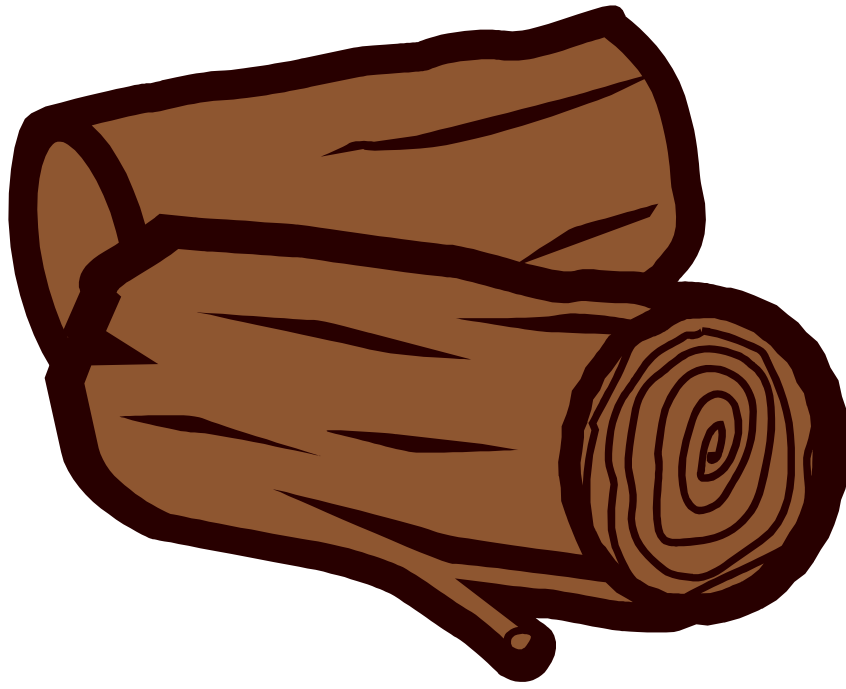
Pig



Dead wood



Dead wood



Dead wood



Leaves



Foxgloves

Image: RSPB



Blue tit

Image: RSPB

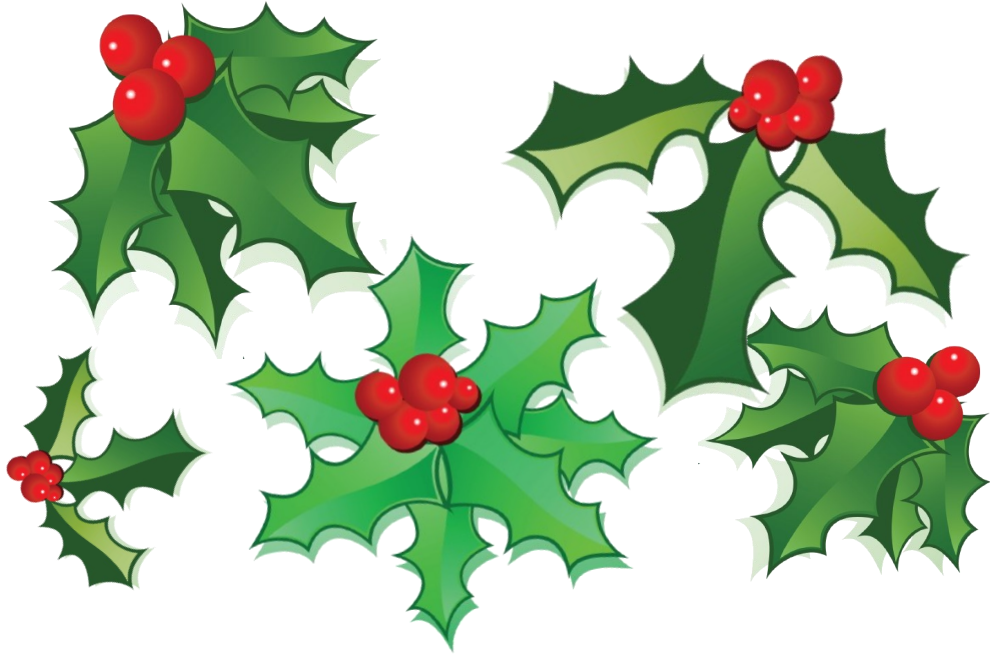


Sparrowhawk

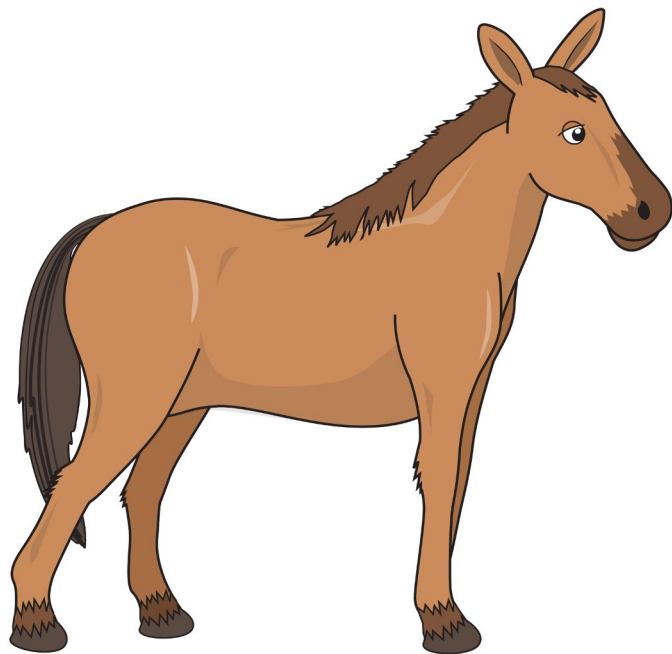
Image: RSPB



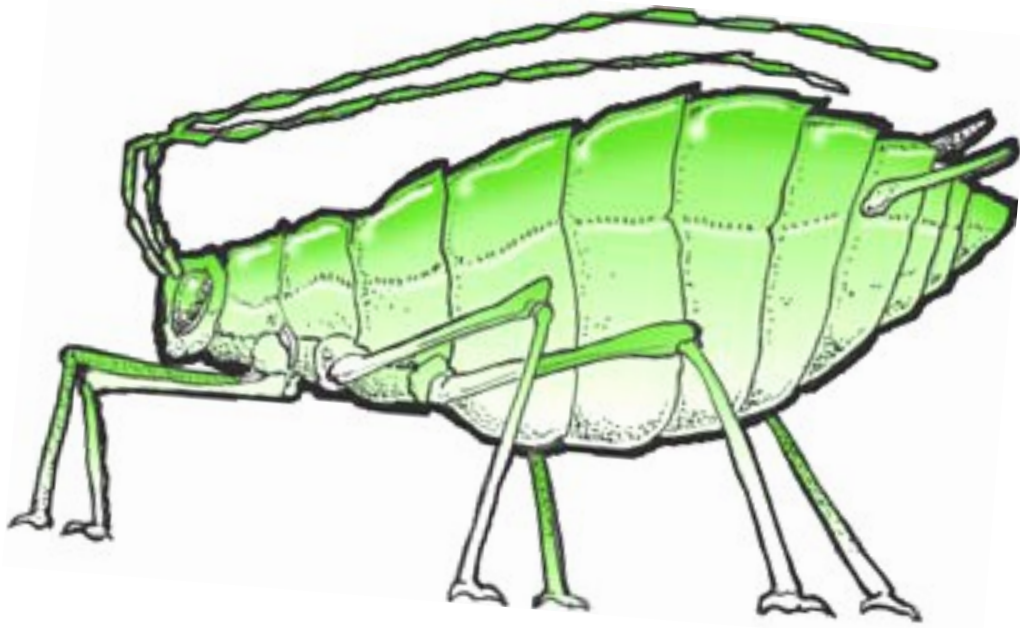
Robin



Holly



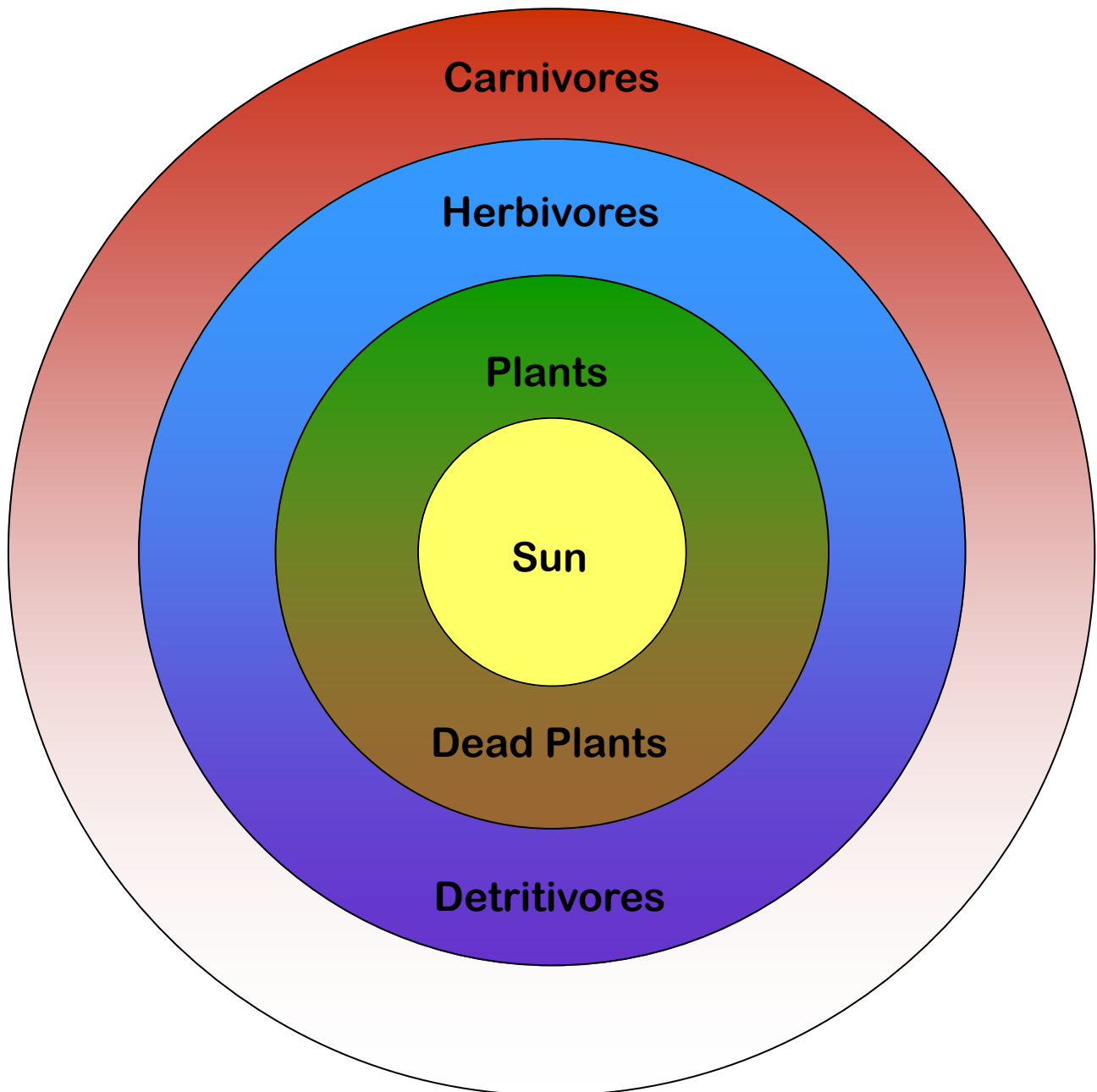
Pony



Aphid



Sun



Food chains (webs)

Students to each (or in pairs) put around their necks a food chain card (picture).

Sit the sun in the middle of the room.

Next get all the plants to sit around the sun in a circle.

Follow this up with herbivores and then carnivores in their correct ring, near to the plant/animal they might eat.

Additional element - add in/separate the dead plants.