

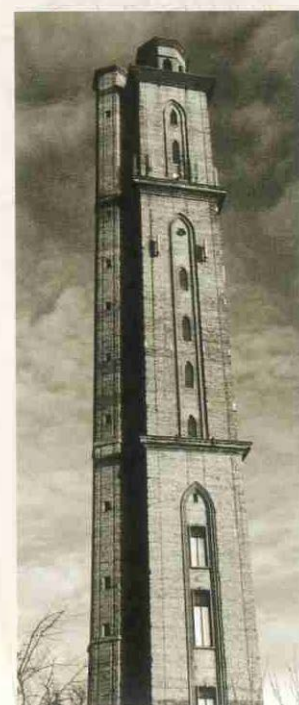
These are key features in the conservation area and the points relate to the numbered areas on the map.

1 The Tower, more properly known as Peterson's Tower, was built between 1879 and 1885. The style and method of construction was influenced by buildings he had seen in India. It is a unique example of early mass concrete construction using Portland Cement with local sand and seashore aggregate, the culmination of a vast series of experiments. The whole tower was built without scaffolding using a climbing shutter system. With the exception of the staircase and cornices which were made in moulds, the building was constructed using un-reinforced concrete. Each floor is supported on a framework of iron joists built into the walls. It was reputedly the tallest concrete structure in the world at the time of its construction. The original idea was that it should be a mausoleum with a perpetual light in the lantern at the top but it was felt that the light would confuse shipping and was not allowed.

2 The plain concrete walls and rendered walls and gate posts give the area a distinctive feel. They provide a contrast with the hedges and the brick wall at the junction of Barrows Lane and Flexford Lane which is the boundary of the original Drumduan farmyard.




Concrete wall



Peterson's Tower

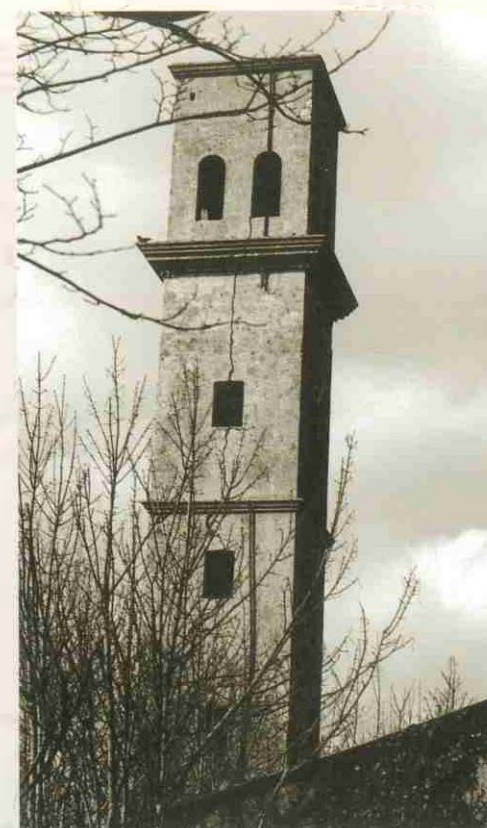
3 The piggeries at Towers Farm - listed Grade II - although just outside the boundary of the conservation area, are an extremely important part of the group of Peterson buildings. This model pig farm was built about 1880 using the same methods as for the Tower. The rows of single storey buildings are 2 bays wide with a moulded cornice along the sides that rises up the vault of the roof.

4 Changing the style of windows in a facade may alter the character of a building significantly. The reflective qualities of a window are altered by replacing 19th century glass which has ripples and flaws, with modern plate glass which is very standardised and shiny. The windows of Hazelhurst have very fine glass. Compare the look of the windows of Hollywood with those of Hollywood Cottage.

Key to Map
 Listed Buildings



Ordnance Survey map of 1909



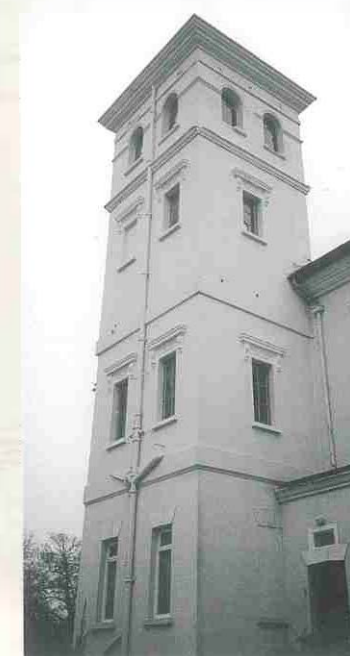
The trial tower



Gate post at South Lodge



Drumduan Farm



Tower at Arnewood Court

These are some of the things that make Sway Tower special - they need to be looked after:

History

- The boundaries are virtually unchanged from before Peterson's time. The grouping of his buildings is the dominant feature of the area.

Buildings

- The Tower and the trial tower.
- All the other concrete structures; Arnewood Court, the agricultural buildings, houses and walls.
- Hipped slate roofs, rendered stacks with square pots.
- Avon Water House and Hazelhurst are important reminders of the previous character of the area.
- Drumduan barn, now converted to a dwelling has decorative brickwork to the gable end.

Landscape/Townscape

- The concrete walls and gateways. Even the hidden bases that remain under the hedges are important.

Setting

- The Tower dominates the view from many parts of the southern edge of the forest as well as the immediate vicinity.

Potential for enhancement

- Overhead cables obstruct the view of the tower from Barrows Lane.
- The condition of the North Lodge and stables group needs attention.
- The trial tower is in need of repair.



The Piggeries