

AM 699/25






NEW FOREST NATIONAL PARK AUTHORITY AUTHORITY MEETING – 23 JANUARY 2025

CHIEF EXECUTIVE'S REPORT

Report by: Alison Barnes, Chief Executive

Summary:

This report covers the period since the Authority meeting on 17 October 2024. The report has been formatted to accord with our statutory purposes and duty; these are delivered by the Re:New Forest themes of 'Climate, Nature, People, Place, Partnership and Achieving Excellence' from our agreed Business Plan, summarised as follows:

 Re:New Climate	 Re:New Nature	 Re:New People	 Re:New Place	 Re:New Partnership
Establishing data and evidence baseline and implementing nature-based climate solutions.	Making space for nature and mitigating recreational pressures.	Increasing green skills and jobs - supporting New Forest business / green tourism. Sustainable land management and securing the future of commoning.	Promoting health and wellbeing through contact with nature.	Establishing stronger partnerships within the boundary.
Building a New Forest coalition for a Net Zero economy.	Enhancing natural capital.	Increasing the National Park's resilience to the effects of climate change.	Connecting people with nature and landscape.	Leading the green agenda beyond the New Forest.
Activating communities and increasing sustainable travel.	Supporting nature recovery through Environmental Land Management Scheme (ELMS).	Increasing the availability of affordable housing.	Safeguarding cultural heritage.	Developing a centre of excellence of insights and innovation for the New Forest.
Re:New Organisation: Achieving Excellence				
<ul style="list-style-type: none"> Delivering high-quality services through a capable and motivated staff team Maximising resources and using them efficiently and effectively Modernising our use of the office space and our wider ways of working 				

Recommendation:

To note the report.

Contact: Alison Barnes

Tel: 01590 646633

Email: alison.barnes@newforestnpa.gov.uk

Equality and Diversity

The Equality Act 2010 provides protection from discrimination in respect of certain protected characteristics and places us under a duty to have due regard to the advancement of equality in the exercise of our functions. We aim to eliminate discrimination, harassment, and victimisation and to advance equality of opportunity throughout all aspects of our work. More details regarding our projects and initiatives, such as PEDALL, are set out in the relevant reports and Equality Impact Assessments.

AM 699/25

NEW FOREST NATIONAL PARK AUTHORITY

AUTHORITY MEETING – 23 JANUARY 2025

CHIEF EXECUTIVE'S REPORT

Report by: Alison Barnes, Chief Executive

As we enter the new year we also mark the 20th anniversary of the New Forest National Park designation. We have seen many changes since 2005 both nationally and locally which have affected the New Forest and the coming years look to be no different. What has remained constant is the determination of staff, members, partners and our community to look after the Forest for this and future generations despite headwinds and challenges. Going into 2025, we will need to harness the energy and resources of this 'Team New Forest' to address some big issues including securing a future for commoning, ensuring the Forest is not impacted adversely by development pressures nor devolution and making sure that we can deliver for climate, nature and our communities.

This period saw a number of announcements from Government which are likely to impact the National Park in the next few years. This includes a revised National Planning Policy Framework and supporting housing need figures for local authorities which identifies a housing need figure for the New Forest district of 1,501 new homes per year — over six times the recent average of 246 homes delivered annually. The Government's formula to calculate this housing need does not take into account that over 80% of the New Forest District is protected as a National Park, National Landscape, Green Belt along with other designations.

The Devolution White Paper published in December sets out plans to change the structure of local government. It makes no explicit mention of national parks but there are a number of aspects included in the White Paper which relate to the National Park – it says the Government will give environmental powers to strategic authorities, including leading local nature recovery strategies; elected mayors will get new development management powers to 'call in' and decide on planning applications of strategic importance; as well as powers to establish a levy to ensure new developments will have associated infrastructure.

At the same time helpful guidance was published on the strengthened legal duty on all relevant bodies to 'seek to further' the National Park purposes in performing their functions which became law through the Environment Act 2023: [The Protected Landscapes duty - GOV.UK](#). It covers over 600 bodies, including Forestry Commission and Forestry England, Local Authorities, Environment Agency, National Highways, Natural England, Network Rail, the Planning Inspectorate, Civil Aviation Authority, and statutory undertakers such as water companies. Relevant authorities will need to apply

the duty when undertaking any function in relation to, or so as to affect, land in a protected landscape. This may include the preparation of development plans and associated assessments and documents, decision-making in respect of development management, planning applications and nationally significant infrastructure projects. The duty also applies to functions undertaken outside of the designation boundary which affects land within the protected landscape.

With developers in and around the National Park having to off-set the impact their developments have on the New Forest and Solent coast, the NPA and 14 local authorities have agreed a scheme setting out how the £15m in funds received from Government's Local Nutrient Mitigation Fund will be deployed across the Solent catchment.

Meanwhile Kingwell - working with the Wildlife Trust, New Forest District Council and ourselves – launched an environmental mitigation scheme at its farm at Keyhaven. This means for the first time developers will be able to off-set the impact of New Forest developments within the National Park itself rather than elsewhere - by buying local nutrient credits and biodiversity net gain (BNG) units to help create a 1,000-acre nature reserve at Keyhaven. Meanwhile our planning officers have received training on new software to enable them to assess BNG requirements when planning applications come in and to monitor the new habitat created by the BNG scheme over the statutory 30-year period.

The New Forest National Park Building Design Awards scheme was launched marking its 10th year. The 2025 awards will be made at the March Authority meeting.

Our Re:New Nature programme continues with the announcement from Defra that the Farming in Protected Landscapes (FiPL) scheme has been extended for a further year. By the end of March 2025, we will have awarded grants to farmers, landowners and managers totalling £850,000 since the scheme began in July 2021 and the scheme's continuation is welcome. Grants have been awarded to support nature recovery; mitigate the impacts of climate change; provide opportunities for people to discover, enjoy and understand the landscape and its cultural heritage; and support nature-friendly and sustainable farm businesses.

The £1.3m Species Survival Fund project which we lead on involves five other partners and has seen the completion of survey work on 11 of the 25 sites being improved for nature, the size of 350 football pitches this quarter. More than 650 species were identified including 50 that are nationally rare or scarce.

The Partnership Plan Leaders Panel met in November, focusing in on water issues and visiting Beaulieu wastewater treatment works with senior representatives from Southern Water. The Panel also reflected on their first joint partnership campaign over the past six months to take people behind the scenes of the National Park to learn more about New Forest nature and the people who help care for it. With final results being calculated,

messages on NPA communication channels alone have been seen by 950,000 people with 53,000 people engaging in the content (comments, likes, shares).

Rangers marked the third anniversary of the multi-agency Operation Mountie sessions to reduce animal accidents with 13 joint sessions; 130 vehicles stopped; and 40 tickets issued for speeding and other offences. The organisations working together on New Forest Code campaigns produced an infographic of this year's results, with online impressions of the Code up to 3.8m from 1m in 2023.

Green skills and career pathways have been at the forefront of our work this autumn. With the University of Southampton (UoS) we have secured funding for a green skills and jobs study linked to local skills improvement work led by Hampshire County Council. We are also helping to develop a local delivery plan for skills in a group led by NFDC with nearby colleges and universities. The Plan will hope to seize potential opportunities provided by the Freeport to address skills gaps. As part of the Youth for Climate and Nature (YouCAN) scheme we marked Green Careers Week catching up with previous apprentices to see where their training had taken them in a series of blogs. Volunteering often provides an entry into green careers and as part of YouCAN we launched a youth volunteering programme for 18 to 30 year olds with three weekend sessions.

The Walking Festival in October was another highlight of this period with more than 15 organisations leading guided walks with themes including archaeology, wildlife, wellbeing and arts. Our wider volunteer programme saw a reboot in October with 20 sessions arranged attended by 74 volunteers giving 731 hours of volunteering time, primarily to improve Copythorne Common SSSI for nature. We look forward to this year's Volunteer Fair on Sunday 26 January in Brockenhurst Village Hall with over 50 organisations promoting their volunteering opportunities.

With several externally-funded projects including the Species Survival Fund and YouCAN due to end in 2026/27, we are looking to develop a Landscape Connections scheme as a long-term funding proposition with partners. Grants of up to £10m over 10 years are available to protected landscapes from the National Lottery Heritage Fund and the first step would be to apply for a development grant.

December saw the 75th Anniversary of the National Parks and Access to the Countryside Act 1949 that created National Parks. To mark the anniversary the government underlined its commitment to greener, wilder and more accessible Protected Landscapes announcing that, as parliamentary time allows, it will strengthen the legislation underpinning Protected Landscapes including the statutory purposes of to provide a clearer mandate to recover nature and it will update governance to ensure it creates the conditions for innovation, inclusion and collaboration. This will include providing National Park Authorities with a general power of competence to ensure we can more freely use our expertise to generate more funds and be more entrepreneurial. Powers in the Levelling-Up and Regeneration Act 2023 will also be used to make regulations to ensure

that relevant authorities deliver better outcomes in Protected Landscapes.

Working through National Parks England, we highlighted to the new Ministerial Team and through the media (Countryfile, Farming Today) the significant shortfall in funding for our National Parks and the huge challenge of delivering expectations for climate, nature, people and our places with our grant now standing at over 40% less in real terms since 2010. Whilst welcoming the government announcement and celebrating all that has been achieved by National Parks over 75 years, the celebrations should not mask the problems faced by all National Parks with regard to current budget pressures and uncertainty for land managers, partners and communities. It looks set to be a challenging and important 20th anniversary year for the New Forest National Park and Team New Forest, one which will set our trajectory for years to come.

DELIVERY OF NATIONAL PARK PURPOSES AND FUNCTIONS

The report has been formatted to accord with the statutory purposes and duty, which we often refer to as Protect, Enjoy and Prosper. These are delivered through our Re:New 'Climate, Nature, People, Place, Partnership, Organisation' objectives from the agreed Business Plan, a summary of which is set out on the first page.

Our Business Plan is delivered through annual Work Programmes, progress on which is set out in these reports alongside the formal quarterly reporting under the six themes to the Resources, Audit and Performance Committee; at the end of each year we produce an Annual Review document.

The final section of this report lists the Members', our Chair's and the Chief Executive's activities and events.

1 First Purpose: Protect

Nature Recovery

In December we received guidance from Natural England on the apportionment of targets relating to three of the 10 national outcomes of the Environmental Improvement Plan (EIP): Goal 1: Thriving plants and wildlife, Goal 7: Climate mitigation and adaptation and Goal 10: enhancing beauty, heritage and engagement with the natural environment. These targets are for the place – the National Park – rather than the NPA, and we will be working with partners in the coming months to identify and embed the targets within the Partnership Plan.

The Local Nature Recovery Strategies for Hampshire and Wiltshire will be key mechanisms for informing decisions on nature recovery. Members attended an LNRS briefing session on 21 October, with contributions from both Wiltshire and Hampshire LNRS officers. Both LNRSs are due to be published this summer. We must publish the targets relating to the EIP goals on our website by July 2025.

We are continuing to deliver our Species Survival Fund project in the New Forest in partnership with the Amphibian and Reptile Conservation, Freshwater Habitats Trust, Hampshire and Isle of Wight Wildlife Trust, the New Forest Commoners Defence Association, RSPB, and Wild New Forest. Sites have been identified, and the project team is using its knowledge and experience to carry out detailed prep work to agree the capital work that is needed on these sites. The project will see woodland, boggy mires, heathland, meadow, wetlands and streams improved, while new ponds, wetlands and meadows will be created. Survey work carried out across 11 of the 25 project sites this summer has identified more than 650 species of animal, plant, and fungus, including 50 priority species that are nationally rare or scarce such as woodlark, raft spider, and Hampshire purslane. However, many of these priority species are hanging on at relatively small and isolated sites where habitat condition is decreasing due to lack of suitable management. The surveys are therefore informing urgent action to restore, increase, and connect these habitats, enabling these priority species to survive and new species to colonise.

Development Management

130 applications were received between 1 October and 23 December 2024. In the same period 133 applications were determined with an approval rate of 95%.

During this same period, seven appeal decisions were received. Four were dismissed and three allowed.

A revised application for the Lyndhurst Park Hotel site was granted on 22 November. Building works are also progressing on the two other consented/allocated housing sites at Whartons Lane, Ashurst and Church Lane, Sway.

Planning Officers attended a two-hour workshop on dark night skies and light pollution. The workshop was led by Richard Burden and Steve Tonkin of Cranborne Chase National Landscape. Cranborne Chase NL is an International Dark Sky Reserve and is keen to spread its best practice beyond its boundaries into neighbouring protected landscapes.

We have sought to upskill staff and improve systems by procuring a software tool to help validate and check Biodiversity Net Gain (BNG) metric information provided by applicants. Training and on-boarding sessions have been delivered by the provider. The tool will be invaluable in helping us discharge our legal duties to assess BNG at the application stage, and importantly to also monitor delivery of new habitat over the statutory 30-year period. Resources for the tool were available as part of additional burdens grant provided by the government and has helped form part of the evidence required for our claim to them, which has been actioned during the period.

Planning Enforcement

Since June the enforcement team has received 48 reports of breaches of planning control which resulted in 36 new enforcement cases. The work of the team resolved 48 cases. Two thirds of those cases were closed because of the efforts of officers to resolve breaches of planning control through the submission of applications and / or remedial steps being taken by the people responsible.

The team has issued two enforcement notices - one relating to an unauthorised building at an equestrian centre and the other relating to an unauthorised replacement dwelling and outbuildings and secured compliance of a Notice which required the demolition of a domestic outbuilding built in a paddock. One appeal against an enforcement notice has been allowed permitting the use of land as a single Gypsy pitch.

Policy

Following the members' session held on 9 December, preparatory work for the initial 'direction of travel' consultation on the review of the New Forest National Park Local Plan (2019) has continued. The proposed consultation document forms a separate agenda item, with the public consultation timetabled for February and March 2025.

On 12 December the Government published its revised National Planning Policy Framework ([NPPF](#)), updated various sections of the National Planning Practice Guidance resource (NPPG), and also published a revised Planning Policy for Traveller sites (PPTS) document. All of these came into immediate effect and are material to the consideration of planning applications. The Government also published its new housing need figures for local authorities in England (national park authorities do not receive housing need figures generated through the standard method, which apply to 'local authorities' rather than 'local planning authorities'). These 'policy off' need figures represent an unconstrained assessment of the number of homes needed in an area and are the first step in deciding how many homes are to be planned for through the plan-making process. The majority of local authorities in and around the New Forest have seen marked increases in their housing need figures, which raises significant concerns regarding the potential impacts of this scale of future development on the National Park. We will work with our neighbouring planning authorities as they assess what can be delivered within an area with such a rich and important natural environment.

In the meantime, members attended a NPPF briefing session on 14 January 2025 which considered the main changes in the updated NPPF and their potential impact on the National Park and surrounding areas.

The Policy Team has also recently completed various assessments that are required by the end of the calendar year. The New Forest National Park Brownfield Sites Register

has been updated and our Infrastructure Funding Statement – setting out the developer contributions received and spent in the last financial years – has also been published.

Work continues on ensuring the impacts of planned development on the internationally-designated nature conservation sites of the New Forest and Solent Coast are addressed. The Solent catchment has received over £15 million through the Government's Local Nutrient Mitigation Fund to ensure planned development in South Hampshire does not result in an increase in nutrients in the Solent's protected waters. The National Park Authority and 14 other local planning authorities recently signed an 'inter-authority agreement' setting out how these funds will be deployed across the catchment. In the New Forest area, the Kingwell environmental mitigation scheme at Keyhaven has been launched (see [Keyhaven Natural Capital — Kingwell](#)), which provides local nutrient credits and biodiversity units to off-set the impacts of planned development.

Archaeology

Summary

During this reporting period the Archaeology Team has consulted on 29 New Forest District Council and 11 Authority planning applications and given comments and recommendations on several other ongoing planning cases. We've also made one site monitoring visit (NFDC site) to review the archaeological work being conducted. On 12 December the updated National Planning Policy Framework (NPPF) was published. Thankfully there are no significant changes to chapter 16 (Conserving and Enhancing the Historic Environment). The Team received 19 new requests for advice and Heritage Impact Assessments (Data Packs) and site mark-ups ahead of forestry work, progressed 24 sites and made five visits across the southern district. In addition, we also concluded 14 active requests.

Higher Level Stewardship (HLS)

The team received nine new requests for HLS advice, progressed 12 sites, conducted five site visits and concluded 11 sites, providing advice along with Heritage Impact Assessments, site visits and site mark-ups ahead of ground works for verge restoration, trees and scrub clearance, stream/wetland restoration, bracken harvesting and rhododendron cut and burn. The team has also been able to continue with some data consolidation work. The current HLS heritage database holds over 4,300 records. We are now bringing the data up to industry standards by removing duplications, correcting errors and improving the details held within the database. The goal is to bring all New Forest heritage data together, forming the New Forest Heritage Map, but this final step is not part of the HLS work.

Working with Community Groups

LoCATE Geophysics Scheme

We are continuing with the LoCATE (Local Community Archaeological Training and

Equipment) scheme, working with archaeological societies and community groups from across Hampshire and Dorset. The equipment has been in constant use and is being actively handed over and shared between different societies. Community groups are actively teaching each other surveying and data processing techniques upon equipment handovers in between the official training sessions, which is exactly what we envisioned for the project.

Walks and Talks

Gareth delivered two talks, one at the Hampshire Field Club 2024 AGM, held at the Hampshire Record Office in Winchester and a second for the Ringwood and District 41 Club. Hilde delivered two guided walks around Lymington Nature Reserve for 'Lymington Afloat', focusing on the New Forest salt industry and an overview of archaeological sites along the Solent coastline.

Romany Community Archaeology Excavation Project

Following on from the excavation at Devils Den, near Thorney Hill, in September, the New Forest Heritage Centre will be exhibiting the finds and telling the story of the site in an exhibition booked for January.

New Forest Knowledge website

The view stats (October, November and up to 16/12/24) reached almost 28,000 views. This is up by 2,000 from the previous period demonstrating that the site continues to be very popular. The future of the site is still uncertain, but the team continues to support the New Forest Heritage Centre team working together to maintain the site as best we can.

Building Design and Conservation

At the end of December, we said goodbye to Emily Carter from our Building Design and Conservation Team. Emily has made a positive contribution to the conservation and enhancement of the built environment of the National Park over nearly five years working in the New Forest and we wish her all the best.

We continue to receive a wide range of applications and proposals relating to both designated (e.g. listed buildings and conservation areas) and non-designated heritage assets (e.g. locally listed assets). As part of this work, we continue to review nominations for assets to be added to our 'Local List', with the Planning Committee meeting of 17 December agreeing to the addition of several further buildings to the list.

The New Forest National Park Building Design Awards is now in its 10th year and the 2025 awards will be made at the Authority meeting in March. The awards scheme recognises the positive contribution high quality design makes to the character of the National Park and accords with the latest iteration of national planning policy in the revised National Planning Policy Framework chapter on 'Achieving well designed places'.

Farming in Protected Landscapes (FiPL) and Environmental Land Management (ELM)

Since the last CEO report Defra has confirmed an extension to the FiPL programme for a further year. The current programme ends on 31 March and we have under £40k remaining to distribute. Three grants were awarded in December, one for machinery and two for farmers working to conserve wading and ground nesting birds in the west of the National Park and Avon Valley.

Work has continued on the potential successor to the Verderers Higher Level Stewardship scheme. The 'PA2' study, coordinated by the Forest Farming Group (FFG) will report in March and will inform an application to an ELM scheme – either Countryside Stewardship or Landscape Recovery. A final scheme will be at least 12 months away from agreement, so the FFG will continue to work with Defra to seek ongoing support for commoners whose livestock are crucial to maintaining the habitats of the New Forest.

Catchment Partnership update

Following a busy period of public engagement in the previous quarter, work around freshwaters and estuaries has concentrated on the hosting role with partners and the delivery by the Freshwater Habitats Trust (FHT) of activities that form part of the Youth for Climate and Nature, and Species Survival Fund projects which are now up and running.

We supported a useful and interesting Partnership Plan Leader's Panel meeting in November which provide an opportunity to share an update on freshwater activity with partners and also hear from others including Southern Water which is actively investigating ways of using wetlands to assist the performance of their works at Beaulieu village. Southern Water is also working with partners to take forward a PhD study around the effects of wastewater on biodiversity, which commenced during the period, and we were pleased that a member of local FHT staff has been successful at securing the role.

The Catchment Partnership uses a variety of citizen science techniques to engage officers, and we were pleased to work with Anastasia Kolesnikova from Southampton University, who undertook her PhD placement with us and provided a valuable review of citizen science, resulting in practical guidance for staff and partners and excellent training workshops.

We have also engaged in a number of restoration site visits with Forestry England and other stakeholders, participated in a workshop for the Hurst Spit to Lymington Strategy, attended the inaugural meeting of the Hampshire Beaver Management Group, and liaised with partners on the Test and Itchen catchment and Solent Forum.

2 Second Purpose: Enjoy

Education and Youth

Between September 2024 and start of January 2025 we have enabled over 610 young people to visit the New Forest National Park to learn about its special qualities, rivers and increasing interest in the management and recreational use of the National Park. Our two most popular sessions continue to be special qualities and river studies with links and comparisons being made between us and National Parks in other areas of the UK.

This year we have taken more visits out to Anderwood too to spread the footfall from that of well used sites at Bolderwood and Whitefield Moor. We continue to use these sites as they are more robust than others i.e. gravel tracks, parking etc. These sites also provide amenities such as toilets/handwashing and often picnic benches - all rubbish taken home. Choosing these sites provides easy access, reassurance for those visiting for the first time that they can use the facilities and ensures we can continue to support and spread the message of the New Forest Code.

Fieldwork opportunities are still very much in demand and increase in group size due to transport expenses is becoming more common. The travel grant (£250) has continued to be exceptionally popular. We often have requests from schools outside of the boundary.

Our work with young people through the YouCAN project has also been busy. We have attended a significant number of local careers fairs, in schools and universities, enabling us to speak to 300 local young people, spreading the word about green career opportunities. In partnership with CIEEM (Chartered Institute of Ecology and Environmental Management), we also attended a national careers event further Birmingham which was attended by over 1000 young people.

Our Junior Rangers program has continued to grow, with sessions including a bioblitz, the deer rut and a fun session with PEDALL. A Junior rangers certification program has been developed, with 11 young people having achieved their bronze award.

Our collaborative working has been progressing, with some great joint volunteering events, including one practical session involving our new youth volunteers, together with Young Rangers from the Parks Foundation, working on an excellent site at Holbury Manor, with Flourish in Nature providing welfare facilities. The Early Green Careers Network, met with Andrew Parry Norton (Chair of the CDA) for a session around the culture and history of commoning. Plans have also been discussed for a residential conference later in the year. We have also supported the commencement of delivery of Carbon Literacy training, with NPA staff and our partners.

The New Forest Youth Board has gained momentum since their launch in September, including welcoming a new member to the board which now has 13 members. Youth Board

members have represented the board at both YouCAN and Wiltshire Council Area board meetings, they have also started engaging with local green groups to see how they could work together. As a group they are in the process of developing a mission statement and approving a Terms of Reference for the board.

Public and community events / rangers / recreation management

The Ranger team engaged with 2,548 people in this period through on site patrols, events, information sessions and community activities.

The Walking Festival facilitated another opportunity for Rangers to engage with the public within the National Park and events included four New Forest themed mitigation walks, one in each quadrant at locations adjacent to strategic sites. Two walks teamed up with partner organisations to showcase the close working we undertake and promote key messages such as the New Forest Code and enjoying the National Park safely.

In November, we hosted this year's UK National Parks Ranger Service Managers Meeting. 27 delegates from all 15 National Parks benefitted from a comprehensive schedule of site visits, talks and workshops across 3 days. A brief history and discussion of the challenges to the New Forest past and present was delivered by a Forestry England Ranger at the Verderers Court. Ranger skills and competencies were discussed in a workshop facilitated by Brian Heppenstall from CIEEM (Chartered Institute of Ecology and Environmental Management) and Linda Nunn from Cranborne Chase AONB and the Countryside Management Association. Training gaps and future opportunities were identified which are to be taken forward and explored from a nationwide delivery perspective. The invaluable benefits of these joint meetings were universally agreed by all delegates. Many new connections were made and problems shared, and solutions recommended through past experience and lived knowledge.

Rangers continued to run and support nature recovery volunteer sessions during this period, including with RSPB restoring heathland habitat at Copythorne Common. A host of school sessions were delivered by rangers on topics ranging from animal accident awareness to an introduction to the New Forest National Park and the New Forest Code.

Hayden and Gillie attended the 2024 Europarc Atlantic Isles Conference exploring how to ensure our protected landscapes are 'Fitter for the Future' with keynote speakers including Julian Glover exploring 'how can protected Landscapes deliver 30X30'.

Rangers continued to attend monthly Operation Mountie sessions, in particular the three-year anniversary of this joint working programme trying to reduce animal accidents across the New Forest.

New work started with a local dementia group 'Memory works' in Lyndhurst, helping to develop steps to engage with those living with dementia and their carers.

Erika continued to use her commoning knowledge to deliver events including a walking festival walk 'The Commoning calendar'. A commoning talk and guided bicycle ride was led around Ashurst Inclosure for PEDALL, and a commoning themed day for Early Green Careers Network members, starting off at Verderers court then heading onto a commoner's base, to learn more about day-to-day life as a commoner and the history behind it.

Recreation Management

Meetings of the Recreation Management Strategy Advisory Group (RMSAG) and the Recreation Management Strategy Steering Group (RMSSG) were held on 29 October and 12 December respectively. Topics discussed included progressing the spatial plan, Forestry England's proposals for the off-road cycle network and the wider New Forest Local Cycling and Walking Infrastructure Plan (LCWIP) consultation; the effect of the Public Space Protection Orders (PSPOs) banning feeding and petting of livestock and fires/BBQs, now in their second year of operation; and the response to the updated Article 4 Direction in relation to 'pop-up' campsites.

At the invitation of the Verderers, and following recent presentments in the Court, we gave our views on Forestry England's current proposals for the off-road cycle network. In doing so, we welcomed the joint work to date between the Verderers and the Cycle Working Group and noted that none of the proposed routes could be implemented before all the necessary permissions were in place. We further acknowledged the concerns that had been raised regarding the potential impact on tranquillity and in doing so, drew attention to the most recent tranquillity study (2015).

The Cycle Working Group will meet on 17 January.

Communications

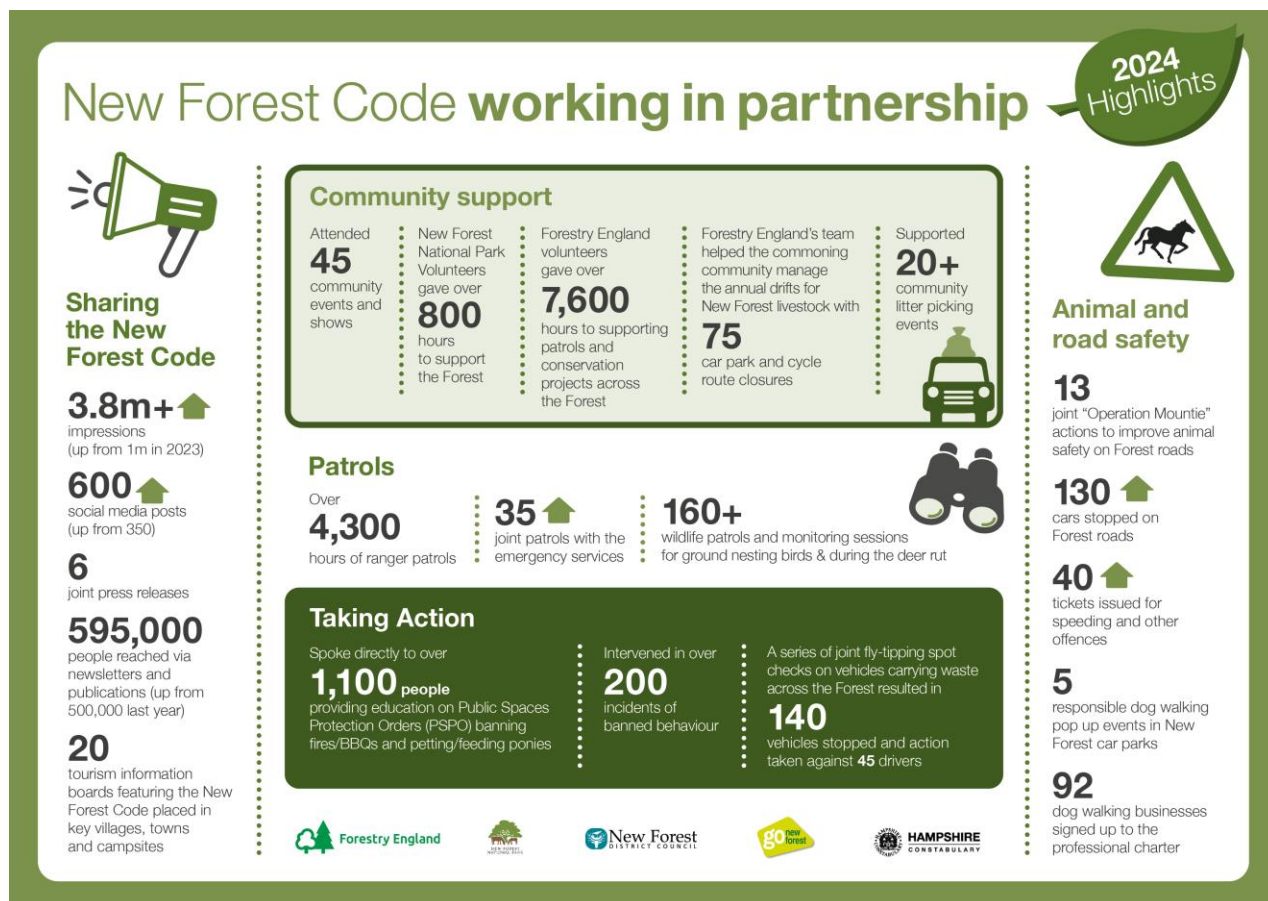
At the time of writing the six-month Behind the Scenes campaign, commissioned by the New Forest Partnership Plan group, is in its final week. The campaign encourages more people to understand why the National Park is so special, with a focus on wildlife and habitats, and the people working for nature recovery behind the scenes in the New Forest. It was launched on the first day of the New Forest and Hampshire County Show, with a special reception at the NPA stand. More than 2,600 people visited the NPA stand which included an exhibition of photos of and interviews with people caring for nature in the Forest. The campaign has been promoted on many NPA and partner channels, with new web pages, newsletters, magazine articles and social posts. On NPA social channels alone, the Behind the Scenes content has so far seen over 280 posts, 950,000

impressions and 53,000 engagements with 19 interviews: [Behind the Scenes - New Forest National Park Authority](#). Final totals will be calculated in the coming weeks.

Working with other national parks we marked the 75th anniversary of the National Parks Act with social media posts and fed into a special programme for Countryfile. We also helped launch a National Parks Partnerships collaboration with FatFace and celebrated the 30th anniversary of the National Lottery with social media posts about our current lottery-funded projects.

Kingwell announced that it was creating a natural capital scheme on its farm at Keyhaven – the first Biodiversity Net Gain (BNG) and Nitrate Mitigation scheme in the New Forest. We promoted the scheme which will create a new 1,000-acre nature reserve in partnership with the Hampshire and Isle of Wight Wildlife Trust. Kingwell signed Section 106 legal agreements with both Local Planning Authorities - New Forest District Council (NFDC) and the NPA — to create a stacked Biodiversity Net Gain (BNG) and Nitrate Mitigation scheme, enabling developers to offset their impacts on the National Park within the National Park for the first time.

As well as supporting the animal accidents reduction campaign, we have compiled statistics to put towards an infographic about the results of our joint New Forest Code campaigns. Regular posts to highlight the work of our rangers in supporting code messages have been issued.



The Walking Festival ran from 19 October until 3 November and saw more than 15 organisations lead guided walks and workshops throughout the New Forest, including with rangers, commoners, and New Forest Marque Inspired members. Events covered topics such as fitness and wellbeing, wildlife, family fun, culture, archaeology, and arts.

We supported the policy and building conservation team in publicising a six-week consultation on the Ashurst and Colbury Village Design Statement and encouraging nominations for the Building Design Awards. We are also supporting the team in reviewing potential software to encourage engagement in and helping analyse the consultation process for the Local Plan next year.

Generation Green 2 – a £4.5 million nationwide project helping England's most socially disadvantaged young people make closer connections with nature – was launched supported by local promotion. In the Forest we have received £78,000 to work with the Countryside Education Trust (CET) in Beaulieu, to provide funded visits for over 600 eligible young people living in areas of social disadvantage to connect with the National Park.

As part of the Youth for Climate and Nature (YouCAN) scheme we marked Green Careers Week catching up with previous apprentices to see where their training had

taken them in a series of blogs. We also posted young volunteering opportunities, achievements from the first year of the YouCAN scheme, and videos about the work of the Youth Board. Social media posts about YouCAN saw 130,000 impressions and 3,500 engagements from October to December.

Our communications support for the New Forest Commoners Defence Association (CDA), funded via our Species Survival Fund project, has included promoting the Verderer's election; vlogs from the CDA Chairman; messaging to reduce animal accidents; pannage; and encouraging CDA membership. Social media posts have seen over 97,000 impressions and 10,000 engagements.

Support for the New Forest Marque and Inspired schemes has seen 80,000 impressions on social and 4,800 engagements this period (up 32% on the same period last year). We supported events including Eats and Treats at Brockenhurst College and a Producers' Roadshow at Everton Nurseries, profiling new members, encouraging people to shop local this Christmas as well as the Brilliance in Business Awards.

Team members attended one day of the three-day Communicate Conference run by the Natural History Consortium, which is the centre for environmental communications. The programme included telling the health benefits of nature; improving storytelling skills; harnessing AI for communications and encouraging communities to take action for nature and climate. The conference recordings from the three different locations provide a wealth of training material for us to use over the coming year.

We finished the year with a Christmas Countdown on social media to celebrate the special qualities of the National Park which saw nearly 190,000 impressions and over 7,000 engagements.

Health and Wellbeing and Inclusive Projects

Our two Health and Wellbeing Fellows, Laura Pridmore and Jennifer Wylie have been busy scoping projects to deliver during the year-long Fellowship (finishing August 2025). They are delivering test and learn projects in Lyndhurst, Lymington and Totton, focused on understanding audiences and pathways to green social prescribing as well as raising awareness of the benefits of this work within the NHS psychiatry community of practice. They are recruiting new groups / offers to the Green Health Hub. Laura and Jennifer worked with our and South Downs NPA officers to respond to the NHS 10-year vision consultation as well as providing information for the National Parks England response. They joined a healthy walk at Wilverley. The Health Walks programme (led by Community First New Forest) and supported by us and NFDC, continues to facilitate valuable walks in nature for groups across the New Forest (July to October 2024 had 2,686 hours of activity and 37 active volunteer walk leaders).

We supported the SPUD Open exhibition in spudWorks, Sway, which exhibited over 50 works from local people in December and January, on the theme of 'Hold on...Let go'. The standard was again very high and this was recognised at a well-attended event in December to open the exhibition.

PEDALL New Forest Inclusive Cycling

PEDALL has continued to build steady momentum and demand for rides at our second site in Ashurst. We have supported 11 new organisations this year to date, including Totton College, Clay Hill School, Sheiling College, Headway (acquired brain injury charity) and the Totton Dementia Hub. Our Pedall Community Hub at Ashurst has also enabled us to continue our community outreach through bike repairs, social rides and bike maintenance training program for children with SEN. We received this lovely feedback from Regents Park School, following their students training with Pedall.

'Two groups of children with SEND attended training with PEDALL and the impact was amazing. All engaged above expectations, loved the practical side of course, learnt so much, gained confidence and self-esteem. Cycling helped to create friendships. Parents noticed positive changes at home. Cycling ability improved massively, crucial for physical and mental health.' Lead Inclusion Officer, Regents Park School

We look forward to reporting a record-breaking year in terms of rider numbers and sessions. Riders were happy to continue riding much later in the year and in this period 1,145 people rode with us during 134 sessions. We look forward to our Christmas ride, the last ride of the year, where a large group of volunteers will join regular riders for a final loop of the wonderful cycle trail from Burley Yard, followed by a well-deserved mince pie. We will enter a period of cycle maintenance and volunteer training in the new year.

Friends of Pedall, in consultation with Cranfield Trust, signed off a strategic plan at the recent AGM meeting, outlining aims and activities to support fundraising and project delivery. Friends of Pedall are delighted to welcome the new trustee, Mike Wilson, who joins from the local legal firm, Moore Barlow. Through our Pass the Pedall summer fundraising event we have connected with several businesses who wish to continue to support us in the coming year, including Chase the Sun (long distance cycle event organisation) and local financial services company, Atomos.

Volunteering

With the relaunch of our volunteering programme in October, we have run our first 20 nature recovery tasks across the New Forest, working with partners including CET, RSPB and Hampshire County Council, in addition to local landowners. This includes the first three weekend sessions of our Youth Volunteering programme (18-30s) spearheaded by Katie Barrow, our Youth Engagement Co-ordinator, which has quickly gained several regular volunteers.

74 volunteers have attended at least one session, contributing 731 hours between them. The focus for the season has been an ongoing Heathland Restoration project at Copythorne Common SSSI, working in close partnership with RSPB in line with Natural England's recommendations. Our new partnership with Flourish In Nature, a local wellbeing and nature organisation, has helped support 15 adults with additional needs on our regular tasks, as well as providing a welfare van for all volunteers in line with our focus on accessibility and inclusivity.

The Volunteer Christmas event was attended by over 40 volunteers, including volunteers from PEDALL and Flourish In Nature, as a thank you from the National Park Authority for their contribution over the past year.

Upcoming sites/partners for early 2025 include Foxlease Park, CODA, Pondhead Conservation Trust and Teddy's Farm, as we work to support nature recovery across the National Park. The 2025 Volunteer Fair will once again be held at Brockenhurst Village Hall, with 50 stallholders currently booked in to attend.

Access and Rights of Way

The surface works at Dilton Farm to repair a badly eroded section of Public Bridleway are now complete. This was a joint project between Hampshire County Council and the NPA to repair over one kilometer of public path damaged by a series of heavy rainfall events. A second phase of adding oak signposts along the route is underway.

We have been successful in our sixth National Grid Landscape Enhancement Initiative funding bid with a grant of £300,000 towards £525,000 of landscape improvements along the Breamore Railway line, near Fordingbridge. The project will be delivered by Hampshire County Council and is focused on public access and nature recovery along a two mile stretch of old railway line from Upper Burgate to South Charford Farm. The project will start in early 2025.

The New Forest Access Forum is fulfilling one of its main statutory duties by inputting into the new 2025-2035 Hampshire County Council Countryside Access Plan. This document will eventually be released for public consultation.

The route of the Highcliffe to Calshot section of the King Charles III England Coast Path is still to be determined. We are waiting for the planning inspectorate to address the objections and representations raised along the proposed route.

3 Duty: Prosper

Re: New Forest Partnership Plan

The New Forest National Park Leaders' Panel met on 11 November in Beaulieu. The

meeting was led by officers from the Environment Agency and Southern Water and explored a range of issues around the water environment in the New Forest, including a site visit to a local wastewater treatment works on the Beaulieu River. The meeting was well attended and provided an opportunity to hear from partners about the work underway to protect water quality in the National Park.

Funding

We recently marked a successful first year of our Youth for Climate & Nature ([YouCAN](#)) project working in partnership with Alabaré, Countryside Education Trust, Freshwater Habitats Trust, The Parks Foundation, Southampton National Park City, Theatre for Life, with funding from The National Lottery Community Fund's climate action fund. Learning from the first year suggests as a partnership we are:

- Successfully engaging young people and underrepresented groups who face barriers to accessing green and blue spaces.
- Addressing climate anxiety, which is increasingly affecting this demographic, by drawing on expertise from partners Alabaré and Theatre for Life to help navigate these challenges.
- Connecting with younger audiences through multi-generational opportunities.
- Enabling collaboration between larger, resourceful partners and smaller organisations.
- Adapting our approach as we go to ensure work packages remain effective and aligned with project goals.
- Enhancing cross-partner collaboration through joint initiatives such as coordinating volunteering efforts and finding ways to maximise resources and efficiencies.

Our Species Survival Fund project in the New Forest is continuing in partnership with Amphibian and Reptile Conservation, Freshwater Habitats Trust, Hampshire & Isle of Wight Wildlife Trust, New Forest Commoners Defence Association and Wild New Forest. Our project is one of 20 across England that has been awarded funds by Defra to help halt and reverse the decline in species abundance by preserving vital habitats. The Species Survival Fund is a partnership between Defra and the National Lottery Heritage Fund and builds on the success of similar initiatives like the Green Recovery Challenge Fund which supported our Green and Blue Horizons project in the New Forest. The Species Survival Fund will help successful projects to get in a good position to apply for long-term, large-scale habitat restoration through schemes such as Landscape Recovery.

With this need for a more strategic long-term approach in mind, we are currently developing plans to apply to the National Lottery Heritage Fund's Landscape Connections initiative which would be informed partly by the learning and development of our Species Survival Fund and YouCAN projects. Landscape Connections is designed to address long-standing heritage issues at scale and accelerate new ideas and innovations. It will specifically support protected landscapes and other world-class

landscapes across the UK to become better for nature and more able to welcome people from all backgrounds, including those who rarely visit them now. Grants of up to £10m are available over a 10-year timeframe. Our initial focus would be on seeking a development phase grant to run during 2025-26 and if this is successful, delivery would be from 2027 onwards to coincide with the next iteration of the Partnership Plan.

Greenprint and skills development

In partnership with University of Southampton (UoS) we have secured funding for a green skills and jobs study to take place from April to July 2025. We assisted in recruiting a small team to carry out the study and linked it to local skills improvement work led by Hampshire County Council. This topic will form one of three local authority workshops to take place in 2025, facilitated by the Partnership for South Hampshire and assisted by us and UoS.

New Forest Skills Development

The NPA is part of a group coordinated by NFDC to develop a local delivery plan for skills in the local area, seizing the potential opportunities provided by the Freeport to address skills gaps within the local workforce. The group includes Brockenhurst and Totton Colleges, along with the Solent and Southampton Universities. This work will complement our Greenprint work. Challenges include the high proportion of micro businesses within the district, an older population compared to other areas and, from the NPAs perspective, the generally lower-paid and part-time nature of the work linked to the visitor and rural economy.

New Forest Marque

At the end of November there were 190 registered Marque members, an increase of 7 members from the previous quarter.

The Marque was also awarded a FiPL grant to further develop the market for local venison. Working with local landowners, suppliers and retailers, the grant will help identify the barriers in the supply chain that limit bringing wild venison to a local market. The work is being carried out by the Marque Chairman and will be completed by the end of March 2025.

New Forest Business Partnership

The annual Brilliance in Business Awards, hosted by the New Forest Business Partnership were held at Brockenhurst College on 28 November. The NFNPA sponsor the Sustainable Business Award, which this year was won by New Forest Escapes, a women-led and local New Forest holiday letting company. The company has invested in a range of sustainability measures such as energy and waste reduction and increased recycling. It is a BCorp certified company demonstrating its

commitment to high standards of social and environmental performance, transparency and accountability.

Visitor experience

We are working with partners around the 2025 edition of our annual online visitor survey, run in partnership with Go New Forest and Forestry England. The 2024 results can be found on our website ['Enjoying the New Forest' Survey - New Forest National Park Authority](#)

New Forest Tour

All three routes of the New Forest Tour will continue to operate as usual in the summer of 2025 (dates TBC). It is difficult to pinpoint one particular reason for the drop in patronage. A considered assessment suggests a combination of factors such as rainfall, the fare cap on service buses versus the Tour ticket price, and a reduced number of visitors on certain days.

Sustainable Transport and Active Travel

Adult single bus fares across England have risen from £2 to £3. This includes routes connecting the New Forest with the Waterside, Bournemouth, Southampton and Salisbury.

We attended the HCC Passenger Transport Forum in November. Condition surveys are underway locally for bus service improvements. Station Interchange Improvement Plans (SIIPs) have been prepared for all rail stations in Hampshire, including New Forest, to identify opportunities to improve access and multi-modal transport interchange to reduce carbon emissions and improve air quality and public health. We will liaise with HCC to ensure overlap where possible with the LCWIP (below).

The New Forest Local Cycling and Walking Infrastructure plan (LCWIP) closed for consultation, and we have met with HCC to review comments. A final plan is now being prepared for a March cabinet meeting, followed by bringing it to the NFNPA for approval.

The Active Travel England (ATE) National Park Capability Fund projects have progressed. In partnership with HCC we have awarded the feasibility study on crossings on the A35 to Sustrans who commenced work in January. We are currently inviting submissions for a Crown Land and connections wayfinding study (in partnership with FE and NFDC). A final feasibility study in partnership with HCC will be carried out on an active travel route from Lyndhurst to Lymington, which came out as a key priority from the LCWIP consultation. We have agreed with ATE an extension for the project to the end of May 2025.

We represented national parks at a workshop for new active travel rural guidance (likely

to be a Local Transport Note) which is to be published in 2025. The ATE / National Parks England partnership was mentioned in Parliament as part of a rural active travel discussion, and ministers have asked ATE and national parks to discuss options around future partnership.

Affordable Housing

Nearly all of the First Homes at the site of the former Lyndhurst Park Hotel redevelopment have now been sold to people that meet the criteria set out in the legal agreement for the site. In mid-December 2024 full planning permission was granted for developing 10 affordable dwellings on land at New Inn Road, Bartley. The legal agreement that accompanies the permission secures the 10 affordable homes for people with a local connection to the parish of Copythorne or adjacent parishes within the National Park and are the first affordable homes permitted in the parish since 2004.

Meanwhile, Vivid Homes, which is developing the Whartons Lane site in Ashurst, has now committed to make the scheme 100% affordable through a mix of tenures that include shared ownership, affordable rent and social rent.

Work continues to complete the various legal agreements for the access to the Burley Affordable Housing Scheme. In the expectation that we shall be able to commence building works this year, we have now gone out to tender to appoint a quantity surveyor to help us in awarding and overseeing the build contract (as we did for the earlier Bransgore Affordable Housing Scheme). Separate to this, we have also tendered some arboricultural works to better manage the trees/hedgerow adjacent to the car park and these works are scheduled to take place next month.

Sustainable Communities Fund

In 2023 we awarded funds of £4,982 to Youth Options to provide a series of three-hour outdoor learning courses over six weeks for up to 10 children. The delivery of nature-based learning programmes strengthens the capacity of staff at local schools to engage with pupils who face barriers to formal education and often exhibit disruptive and risk-taking behaviours in the classroom.

Youth Options exceeded its goal, delivering sessions to two groups of 15 children from William Gilpin primary school over 12 weeks and receiving excellent feedback from both students and staff. The young people who attended these sessions were selected by school staff due to their social, emotional and mental health needs. Low self-esteem, relationship struggles, poor communication and low self-confidence were among the challenges these children face. After completing their programmes, the school staff noted that the young people found it easier to integrate into the classroom when they returned to school, and they observed an improved mood and engagement among the participants.

A family activity day was also delivered to eight parents in nature-based learning alongside their children. The session gave the children an opportunity to share their learning with their families and helped equip and empower parents with tools, ideas and skills to continue supporting their child's engagement with nature outside of the school environment.

4 **Organisation: Achieving Excellence**

Human Resources

As of 6 January 2025, the total staff headcount was 85 or 74.81 full-time equivalents (FTEs).

	Headcount	Variation from previous report	Full Time Equivalents	Variation from previous report
Core funded	63*	+ 1	55.57*	+ 0.41
Funded by external projects	22	– 1	19.24	– 0.56
Total	85	0	74.81	– 0.15

*Of the core funded roles, one staff member (1 FTE) is working in shared services, four are on a fixed-term contract and 21 are part-time.

In the last few months we recruited to the following roles:

Role	Contract type	How funded
Receptionist (Monday & Tuesday)	Permanent, part-time	Core funded
Policy Officer	Permanent, full-time	Core funded

We said goodbye to:

Role	Contract type	How role will be filled in future
Project Co-ordinator	Project funded	Assessing vacancy
Building Design and Conservation Officer	Permanent, core funded	Like for like replacement

We are currently recruiting for:

Role	Contract type	How funded
Building Design and Conservation Officer	Permanent	Core funded

New Forest Voices

71 staff and seven members participated in three-hour equality, diversity and inclusion (EDI) sessions, entitled New Forest Voices - in conversation. Facilitated by an EDI training consultant, these sessions provided staff and members the opportunity to learn and also propose actions, both individual and team, to take this work forward. The New Forest Voices steering group will meet in the New Year to create a new three-year action plan around the three themes of Understanding, Experiences and Ways of Working.

IT & Cyber Security Services

Security / Infrastructure

To reinforce awareness of security risks associated with emails, a phishing exercise was conducted for all staff. Where necessary, additional training exercises were provided.

Planning System

We are pleased to report that the TIF to PDF conversion project has now been successfully completed.

Collaboration with New Forest District Council on the digital planning infrastructure project (DPIF) is ongoing, and we expect to publish several data sets before the end of the year. The full list of data sets includes: brownfield sites, Tree Protection Orders, conservation areas, listed buildings, and Article 4 directions.

There are no further updates regarding the Land Registry / land charges changes; we are awaiting feedback once they complete their review/comparison of the current Land Charges with the data we provided. In the meantime, we continue our in-house data consolidation efforts.

Other work / projects

Windows 11 - The rollout is progressing well, with approximately 75% of our devices updated. The remaining updates are expected to be completed by the New Year.

Replacement Wi-Fi - Survey work has identified the requirements for a stronger Wi-Fi signal in the building. We are in the process of appointing a third party to install 12 new Wi-Fi access points and setting up the new Wi-Fi networks early in the New Year.

GIS - The GIS servers are transitioning to a new Cadcorp-hosted cloud environment, with new web maps scheduled to go live soon. The team recently underwent administration web map training to provide additional support for the new system.

Housekeeping - The guest user list has been tidied. Parish distribution lists have been moved to the cloud for easier management. A review of all active devices has been conducted.

Audit - We have met with our internal auditors to scope out the 2024/25 audit, which will focus on IT Disaster Recovery, IT Business Continuity, and Cyber Response Plans.

Presentations - The team presented on the environmental impact of emails at the November all-staff meeting. The presentation was well received, and staff are already clearing out their inboxes to help minimize the carbon footprint.

IT hosted a learning@lunch session on OneDrive, SharePoint, and Teams, highlighting their uses and interactions, attended by over 20 staff members. This will lead to further work in the New Year, reviewing Teams storage and SharePoint usage.

Legal and Information management

Information requests

In the last quarter (Q3) we received 13 requests, which is slightly fewer than the five-year average of 17 per quarter. During the first three quarters of this financial year we have now received 46 formal requests for information under the Freedom of Information Act 2000 and / or the Environmental Information Regulations 2004, compared with 62 in the same period last year. However last year was a record year with a particularly busy summer where we received three times the average in the month of August alone. Of those which have already been responded to, all were completed within the statutory timeframe of 20 working days, with the average response time being 13.6 working days. There are currently six requests with response deadlines throughout the month of January that have yet to be responded to.

As in previous years the majority of requests relate to our planning function (65%), with requests for information relating to specific planning and tree works applications, pre-apps and enforcement investigations, as well as more general requests about BNG, policy and statistics. Those which were not related to our planning function were predominantly concerned with our finance and IT arrangements.

We endeavour to disclose as much information as possible in response to the requests received and have only withheld the requested information in its entirety on four occasions. This year there have been an unusually high number of requests (eight) where we needed to seek clarification but did not receive a response or the requester decided not to pursue the matter, therefore these requests are logged as 'lapsed/not pursued/invalid' and we have not provided a response.

Outcome of all requests so far this year	Requests	%
Released	14	30.4
Partially released	6	13.0
Withheld	4	8.7
Not held	8	17.4
Lapsed/not pursued/invalid	8	17.4
Outstanding at 6 Jan 2025	6	13.0
	46	100

Complaints

We have considered 15 formal complaints so far this year which is an increase on the 10 received in the same period last year. Formal complaints are almost exclusively related to planning applications or enforcement investigations and this year is no exception. Whilst in percentage terms this is a significant increase year on year, the number of complaints received remains relatively low given the number of planning applications we deal with. Additionally, eight of the complaints were related to just three planning applications.

Privacy and data protection

During Q3, we received one request from a member of the public wishing to exercise their right to object to the processing of their personal data based on their particular situation under the UK General Data Protection Regulation (GDPR). These types of requests remain relatively few and are considered on a case-by-case basis.

We continue to work hard to ensure that we meet our obligations under the GDPR and are constantly reviewing and updating our website, documents and privacy notices to improve transparency and compliance, whilst responding to data protection queries as they arise.

5 Members

5.1 Some Members were involved in some or all of the following meetings and events

- 21 October – Members Briefing – LNRS
- 4 November – Resources, Audit and Performance Committee
- 5 November – Finance & Facilities Task & Finish Group
- 19 November – Planning Committee
- 26 November – Standards Committee
- 2 December – New Forest Access Forum

- 4 December - Finance & Facilities Task & Finish Group
- 5 December – Consultative Panel
- 9 December – Members Day – NFNPA Local Partial Plan Review
- 17 December – Planning Committee
- 6 January – Standards Committee
- 7 January - Finance & Facilities Task & Finish Group
- 21 January – Planning Committee

5.2 Forthcoming Members activities include:

- 3 February – Resources, Audit and Performance Committee
- 13 February – Members Day TBC
- 18 February – Planning Committee
- 3 March – Resources, Audit and Performance Committee
- 5 March – Finance & Facilities Task & Finish Group
- 6 March – Consultative Panel
- 18 March – Planning Committee

5.3 Chief Executive's external engagements

- 17 October – Waterside Steering Group meeting
- 18 October – National Parks Partnerships (NPP) Big Ideas Forum
- 21 October – English National Park Officers Group (ENPOG) meeting
- 21 October – Natural England Parliamentary Reception
- 22 October – National Parks England (NPE) Board meeting
- 24 October – Leadership programme planning meeting
- 25 October – Meeting regarding Natural Health Service 2025
- 29 October – Green Leadership Programme session 2
- 30 October – HLS Board
- 30 October – Nature Recovery policy meeting (national)
- 31 October – Leadership programme planning meeting
- 31 October – Sustainable South Pathfinder meeting with business leaders
- 1 November – Meeting of Hampshire & Isle of Wight (HIOW) Public Sectors Leaders
- 1 November – Beaulieu Estate Dinner
- 5 November – National Park City International Steering Group meeting
- 5 November – Regular meeting with Deputy Director, Thames Solent, Natural England
- 6 November – NPP AGM
- 6 November – Business South Pre-Conference Dinner
- 7 November – Speaker at Business South Annual Conference
- 8 November – Meeting with founder of Generation Green
- 8 November - Leadership programme planning meeting
- 8 November – Partnership for South Hampshire (PfSH) Chief Executives meeting

- 10 November – Remembrance Day Parade
- 11 November – Partnership Plan Leaders panel
- 11 November – Regular meeting with Chief Executive, New Forest District Council (NFDC)
- 12 November – Joint meeting between Senior Leadership Teams at NFDC and NFNPA
- 13 November – National Parks Nature Recovery Plan meeting
- 13 November – Dinner with UK National Park Rangers
- 14 November – Leadership programme planning meeting
- 15 November – St George's Windsor, Leader to Leader exchange session
- 19 November – Green Leadership Programme session 3
- 21 November – Defra Environmental Committee
- 25 November – Meeting with UK National Parks & Chairs to plan UK Forum
- 25 November – Discussion with accommodation consultants
- 25 November – ENPOG meeting
- 26 November – Business South Board meeting
- 26 November – Green Leadership action learning group session
- 26 November – Regular meeting with the Deputy Surveyor
- 26 November – Nature Recovery policy meeting (national)
- 27 November – Joint meeting between Chairs and Chief Executives, NFDC & NFNPA
- 28 November – Regular meeting with Chair, National Park Partnership
- 28 November - National Park City Board meeting
- 2 December – Meeting with Directors of Conservation (UK)
- 3 December – Leadership programme planning meeting
- 3 December – National Park City peer review meeting
- 4 December – Meeting with Managing Director, ep architects
- 5 December – NPE Board meeting
- 6 December – Greenprint Steering Group
- 6 December – National Parks UK Chairs and Chief Executives meeting
- 10 December – Green Leadership Programme session 4
- 11 December – NFDC Corporate Peer Challenge
- 12 December – SPUD judging and Open Gala evening
- 13 December – St George's Windsor Leader to Leader exchanges
- 16 December – Regular meeting with Chief Executive, NFDC
- 16 December – Southern Water perceptions interview
- 17 December – Meeting with Director of Conservation & Climate Change, North York Moors NPA (UK Nature Recovery)
- 17 December – Leadership programme meeting
- 17 December - Meeting with National Park City peer review team
- 18 December – National Park City International Steering Group
- 18 December – Meeting with Deputy Director Wessex, Natural England
- 30 December – Recording was aired for BBC Radio 4 World at One
- 9 January – Meeting with Go New Forest

- 10 January - Meeting with Defra, NFNPA Annual Review
- 13 January – Meeting with NPP
- 13 January - Meeting with Business South
- 16 January – NPP Chief Executive recruitment process drop in session
- 16 January – Waterside Steering Group
- 17 January – Regular meeting with Chief Executive, NFDC
- 17 January – St George's Windsor, Leader to Leader Exchange
- 21 January – Sustainable South Action Group meeting

5.4 Chair's engagements

- 21 October – Local Nature Recovery Strategy session
- 22 October – NPE Board meeting
- 6 November – NPP AGM
- 11 November – Partnership Plan Leaders Panel
- 20 November – Meeting with Defra
- 27 November - Joint meeting between Chairs and Chief Executives, NFDC & NFNPA
- 5 December – Forest Farming Group meeting
- 5 December – NPE Board meeting
- 6 December – National Parks UK Chairs and Chief Executives meeting
- 16 January – NPP Chief Executive recruitment process drop in session

6 Recommendation

To note the report.