



New Forest National Park Authority

Local Development Scheme
Sixth Revision

July 2024

New Forest National Park Authority Local Development Scheme

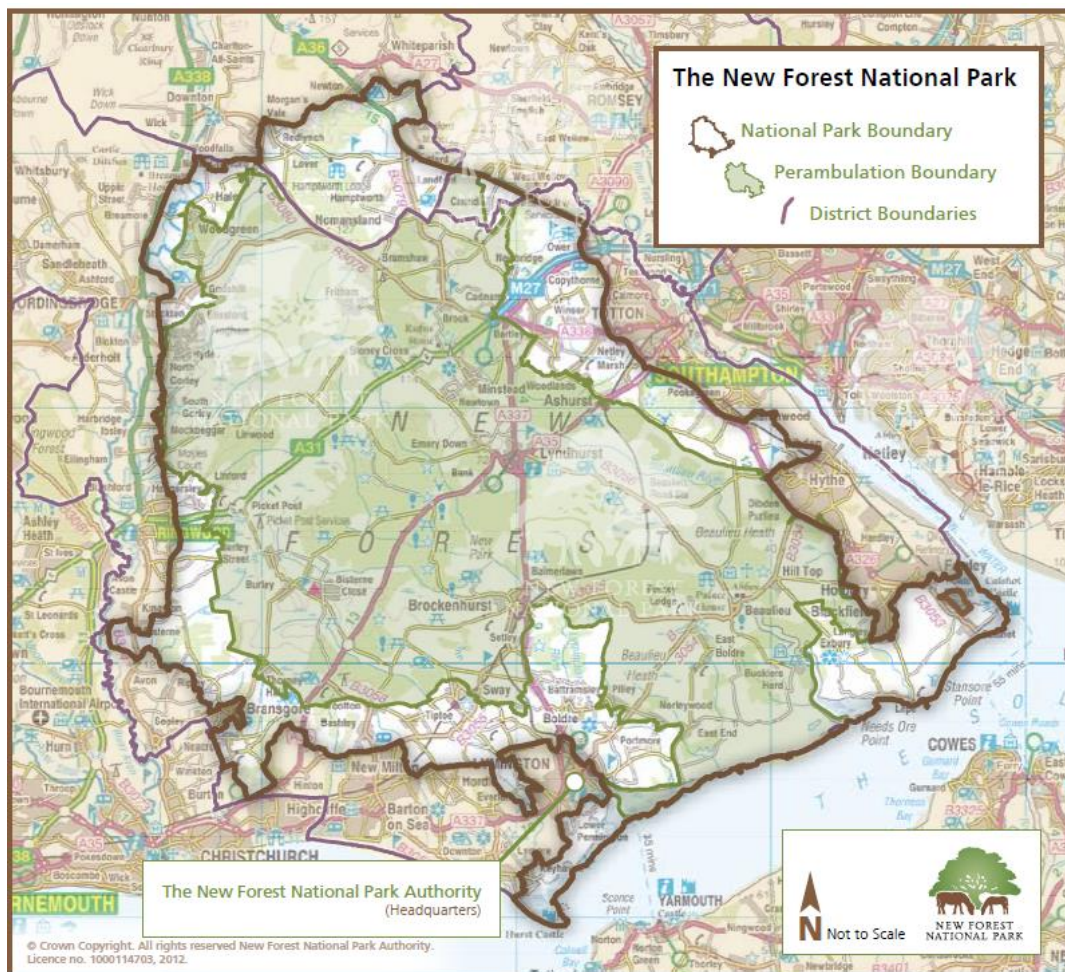
1. Introduction

1.1 The New Forest National Park was designated in March 2005 and the National Park Authority assumed its full planning responsibilities in April 2006. The Authority's role is to ensure that the two statutory purposes of National Park designation are achieved, namely:

- to conserve and enhance the natural beauty, wildlife and cultural heritage of the Park; and
- to promote opportunities for the understanding and enjoyment of the Park's special qualities by the public.

In pursuing these purposes, the Authority is required to seek to foster the economic and social well-being of local communities within the Park.

1.2 The New Forest National Park covers 220 square miles - including parts of New Forest District, Test Valley Borough and Wiltshire Council - within the counties of Hampshire and Wiltshire (see indicative map below).



- 1.3 The National Park Authority is responsible for spatial planning, minerals and waste planning, development management, enforcement and other related regulatory functions within the National Park.
- 1.4 The Authority is also responsible for meeting the requirements placed on local planning authorities under the Planning & Compulsory Purchase Act 2004 (as amended). This includes the preparation of a Local Development Scheme (LDS) setting out the timetable to produce a new or revised Local Plan for the area.
- 1.5 The National Park Authority prepared its first LDS in 2007 and issued updates in 2009, 2011, 2016 and 2017. A number of documents outlined in these earlier Schemes have now been adopted, including the current New Forest National Park Local Plan (2019), as well as a number of Supplementary Planning Documents and Village Design Statements.
- 1.6 The statutory 'development plan' for the New Forest National Park currently comprises:
 - the New Forest National Park Local Plan DPD (2019); and
 - the Hampshire Minerals and Waste Plan DPD (2013); and
 - the 'made' Hythe & Dibden Neighbourhood Plan (2019) for the part of the New Forest National Park in Hythe & Dibden parish; and
 - the 'made' New Milton Neighbourhood Plan (2021) for the part of the New Forest National Park in New Milton parish; and
 - the 'made' Wellow Neighbourhood Plan (2024) for the part of the New Forest National Park in Wellow parish; and
 - the 'made' Ringwood Neighbourhood Plan (2024) for the part of the New Forest National Park in Ringwood parish.

Supplementary Planning Documents

- 1.7 There is no requirement for Supplementary Planning Documents (SPD) to be included in the LDS. However, the National Park Authority will continue to produce SPDs where appropriate. In addition, the Authority will continue to work with local communities preparing Village Design Statements and present these for adoption as SPDs as appropriate. Details of adopted and emerging SPDs can be viewed on the planning policy pages of the National Park Authority's website.

Neighbourhood Plans

- 1.8 Neighbourhood Plans – once 'made' – also form part of the statutory development plan for the National Park. The NPPG guidance on 'Plan-making' encourages planning authorities to include details of other documents which form (or will form) part of the development plan for the area, such as Neighbourhood

Plans. However, the preparation of a Neighbourhood Plan is entirely a decision for the relevant town or parish council, and they lead on the preparation of the Plan. Given that the decision to prepare a Neighbourhood Plan - and the timetable for production - is outside the Authority's direct remit, these documents will not be included in this Local Development Scheme. Details of any made or emerging Neighbourhood Plans in the National Park can be found on the Authority's website.

Minerals and Waste Planning

- 1.9 The New Forest National Park Authority works in partnership with Hampshire County Council, Portsmouth City Council, Southampton City Council and the South Downs National Park Authority on the delivery of the minerals and waste planning function. There is a separate adopted LDS (2023) for minerals and waste planning documents which can be found on the Hampshire County Council website.

Monitoring and review

- 1.10 The timetable in this LDS sets out the key milestones in the Local Plan review process. However, there remains uncertainty at a national level in the plan-making process due to the recent implementation of the Levelling Up and Regeneration Act 2023, and the change of Government which has identified forthcoming changes to the planning system and the NPPF. It is therefore likely that further iterations of the Authority's Local Development Scheme will be required in due course.
- 1.11 The Authority's annual monitoring report (AMR) will set out an update on the progress of the documents in the Local Development Scheme, as well as assessing the relevancy and effectiveness of the planning policies in the adopted Local Plan.

Programme for the review of the New Forest National Park Local Plan

Financial year	2024 - 25				2025 - 26				2026 - 27				2027 - 28			
Quarter	Q 1 (Apr– Jun)	Q 2 (Jul– Sept)	Q 3 (Oct - Dec)	Q 4 (Jan– Mar)	Q 1 (Apr– June)	Q 2 (Jul– Sept)	Q 3 (Oct– Dec)	Q 4 (Jan– Mar)	Q 1 (Apr– June)	Q 2 (Jul– Sept)	Q 3 (Oct– Dec)	Q 4 (Jan– Mar)	Q 1 (Apr– June)	Q 2 (Jul– Sept)	Q 3 (Oct– Dec)	Q 4 (Jan– Mar)
National Park Local Plan Review				18A			18B			19		S	E	M	A	
Policies Map	The Policies Map will be updated alongside the adoption of the Local Plan Review															
Hampshire Minerals & Waste Local Plan Review	See separate Hampshire Minerals and Waste LDS (2023)															

Stage in plan-making process	
Consultation on 'issues & options' (Regulation 18)	18A
Non-statutory consultation on draft Plan	18B
Consultation on Regulation 19 Plan	19
Submission to Secretary of State for examination	S
Independent Examination	E
Consultation on proposed modifications	M
Adoption	A

The regulations cited here can be found in the Town and Country Planning (Local Planning) (England) Regulations 2012 – as amended.

Title	New Forest National Park Local Plan Review	
Role and content	Sets out the vision, objectives and spatial strategy for planning in the National Park within the context of the two statutory Park purposes and related duty. The revised Local Plan will set out the policies against which planning applications will be considered.	
Status	Development Plan Document (DPD)	
Chain of conformity	The revised Local Plan will respond to the requirements of the National Planning Policy Framework (NPPF), the Government's National Planning Practice Guidance (NPPG) resource and primary legislation covering National Parks.	
Geographic coverage	The whole of the New Forest National Park	
Timetable		
Milestones	Publication of Submission draft Local Plan for consultation (Reg. 19)	July – September 2026
	Consideration of responses	January 2027
	Submission of the Local Plan to Secretary of State (Reg.22)	February 2027
	Independent Examination into the Local Plan (Reg. 24)	April – June 2027
	Adoption of Local Plan and Policies Map (Reg. 26)	December 2027
Arrangements of production and review		
Who is leading the production of the document?	National Park Authority's Policy Team, with input from specialist officers within the Authority and from partner organisations.	
Management arrangements	Approval required by full National Park Authority meeting at key stages of production.	
Resources	Policy team at the NPA, supported by other teams within the NPA, external organisations and specialist consultants where required	
External community involvement	Statutory consultation taking into account commitments in the Authority's adopted Statement of Community Involvement (2023)	
Monitoring and review mechanisms	Annual Monitoring Report	

Glossary and abbreviations

AMR	The Annual Monitoring Report assesses the implementation of the Local Development Scheme and the extent to which policies are being successfully implemented.
Development Plan	As set out in Section 38(3) of the Planning and Compulsory Purchase Act 2004, an area's development plan forms the basis for determining planning applications. The development plan for the New Forest National Park currently comprises the adopted National Park Local Plan (2019), the adopted Hampshire Minerals & Waste Plan (2013) and several 'made' neighbourhood plans (see paragraph 1.6 of this LDS for more details).
LDS	A Local Development Scheme sets out the programme for preparing the Local Plan for an area, and other related planning documents.
Local Plan	The adopted New Forest National Park Local Plan (2019) which sets out the long-term vision, objectives and spatial strategy for planning within the New Forest National Park. It will continue to form a key element of the 'development plan' for the National Park, until the partial review is adopted.
Neighbourhood Plans	Introduced by the Localism Act 2011, Neighbourhood Plans allow local communities to prepare their own planning policies for their area. The Plans must go through public consultation, examination and local referendum before being adopted as part of the 'development plan'. Although not listed within this LDS, local communities have the option of preparing their own Neighbourhood Plans where appropriate.
NPPF	The National Planning Policy Framework (NPPF) is a consolidated set of national planning policies originally published by the Government. It is a material consideration in the determination of planning applications and in the preparation of local plans.
NPPG	The National Planning Practice Guidance (NPPG) is an online Government resource providing additional guidance on a range of national planning policy.
Policies Map	A map indicating the areas to which particular development plan policies apply. It will be updated when the revised Local Plan is adopted.
SCI	The Statement of Community Involvement (2023) sets out the standards which the National Park Authority will achieve with regard to involving local communities in the preparation of local development documents and development management decisions.
SPDs	Supplementary Planning Documents (SPDs) are non-statutory documents that support the Local Plan. They provide detailed guidance on how we'll implement a wide range of policies or proposals in our development plan documents. They are material considerations in the determination of planning applications.