



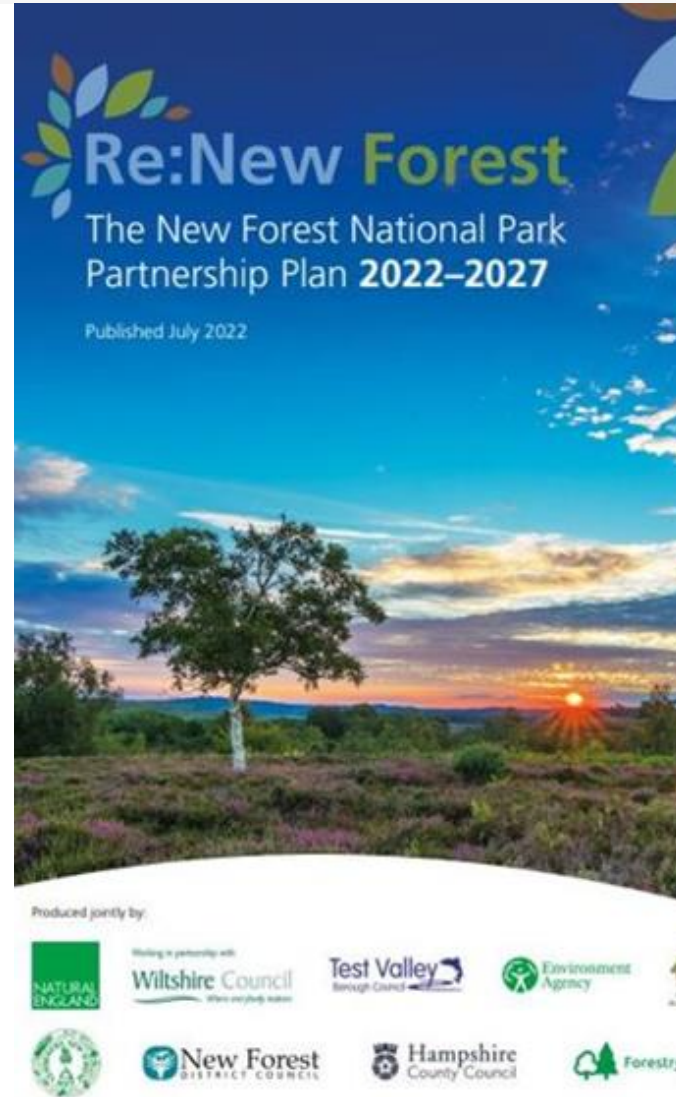
NEW FOREST
NATIONAL PARK

National Park Update

7 March 2024

Levelling Up and Regeneration Act 2023

- New duty for all relevant authorities to seek to further National Park purposes (s245) – also restates the Sandford Principle
- SoS can require a relevant authority to contribute, implement and review a National Park Management Plan



Protected Landscapes Targets and Outcomes Framework

- [Protected Landscapes Targets and Outcomes Framework - GOV.UK \(www.gov.uk\)](https://www.gov.uk/protected-landscapes-targets-and-outcomes-framework)
- Government setting out how it expects National Parks and AONBs to achieve three key outcomes for:
 - Thriving plants and wildlife
 - Mitigating and adapting to climate change
 - Enhancing beauty, heritage and engagement with the natural environment
- For the place, not individual organisations, targets to be embedded into statutory management plans



Thriving plants and wildlife

- **Target 1** - Restore or create more than 250,000 hectares of a range of wildlife-rich habitats within Protected Landscapes, outside protected sites by 2042 (from a 2022 baseline).
- **Target 2** - Bring 80% of SSSIs within Protected Landscapes into favourable condition by 2042.
- **Target 3** - For 60% of SSSIs within Protected Landscapes assessed as having 'actions on track' to achieve favourable condition by 31 January 2028.
- **Target 4** - Continuing favourable management of all existing priority habitat already in favourable condition outside of SSSIs (from a 2022 baseline) and increasing to include all newly restored or created habitat through agri-environment schemes by 2042.
- **Target 5** - Ensuring at least 65% to 80% of land managers adopt nature friendly farming on at least 10% to 15% of their land by 2030



Activating the Partnership Plan

- Leaders Panel meeting regularly
- Supported by a dedicated officers group
- Need to work together to get the right agri-environment scheme for the Forest
- Importance of commoning to be reflected in the emerging Local Nature Recovery Strategy (LNRS)



New Article 4 Direction confirmed for temporary campsites

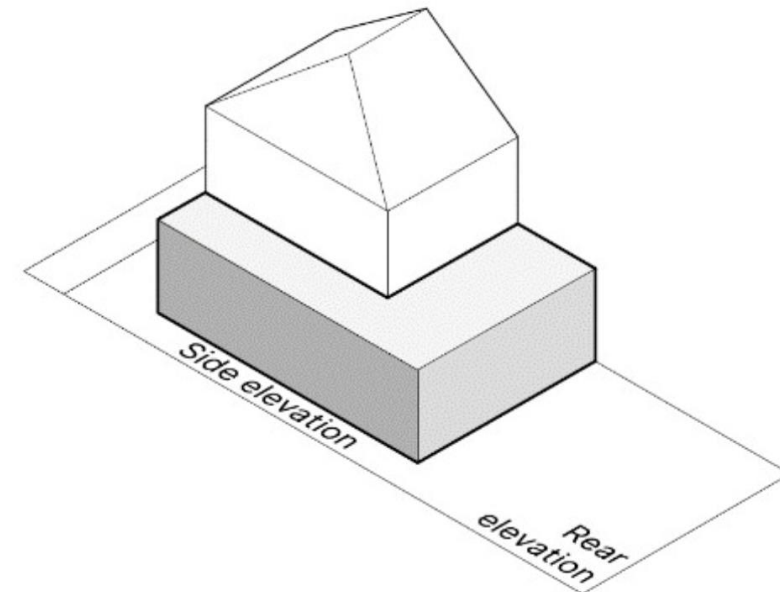
- Planning permission required for all pop-up campsites established after 1 March 2020
- And for all pre-existing pop-up campsites operating for more than 28 days a year
- PDR limits use to 50 pitches / 60 days
- [National Park-wide Article 4 Directions – temporary campsites - New Forest National Park Authority \(newforestnpa.gov.uk\)](https://www.newforestnpa.gov.uk)



Government Consultations

- [Consultation on additional flexibilities to support housing delivery, the agricultural sector, businesses, high streets and open prisons; and a call for evidence on nature-based solutions, farm efficiency projects and diversification - GOV.UK \(www.gov.uk\)](#) – awaiting Govt response to consultation
- [Changes to various permitted development rights: consultation - GOV.UK \(www.gov.uk\)](#) – closes on 9 April

The permitted development right currently allows for a rear and side extension



Local consultations

- [Proposals relating to Household Waste and Recycling Centres \(HWRCs\) | About the Council | Hampshire County Council \(hants.gov.uk\)](#)
- [Proposals relating to rural countryside car parking charges | About the Council | Hampshire County Council \(hants.gov.uk\)](#)
- Consultation closes on 31 March



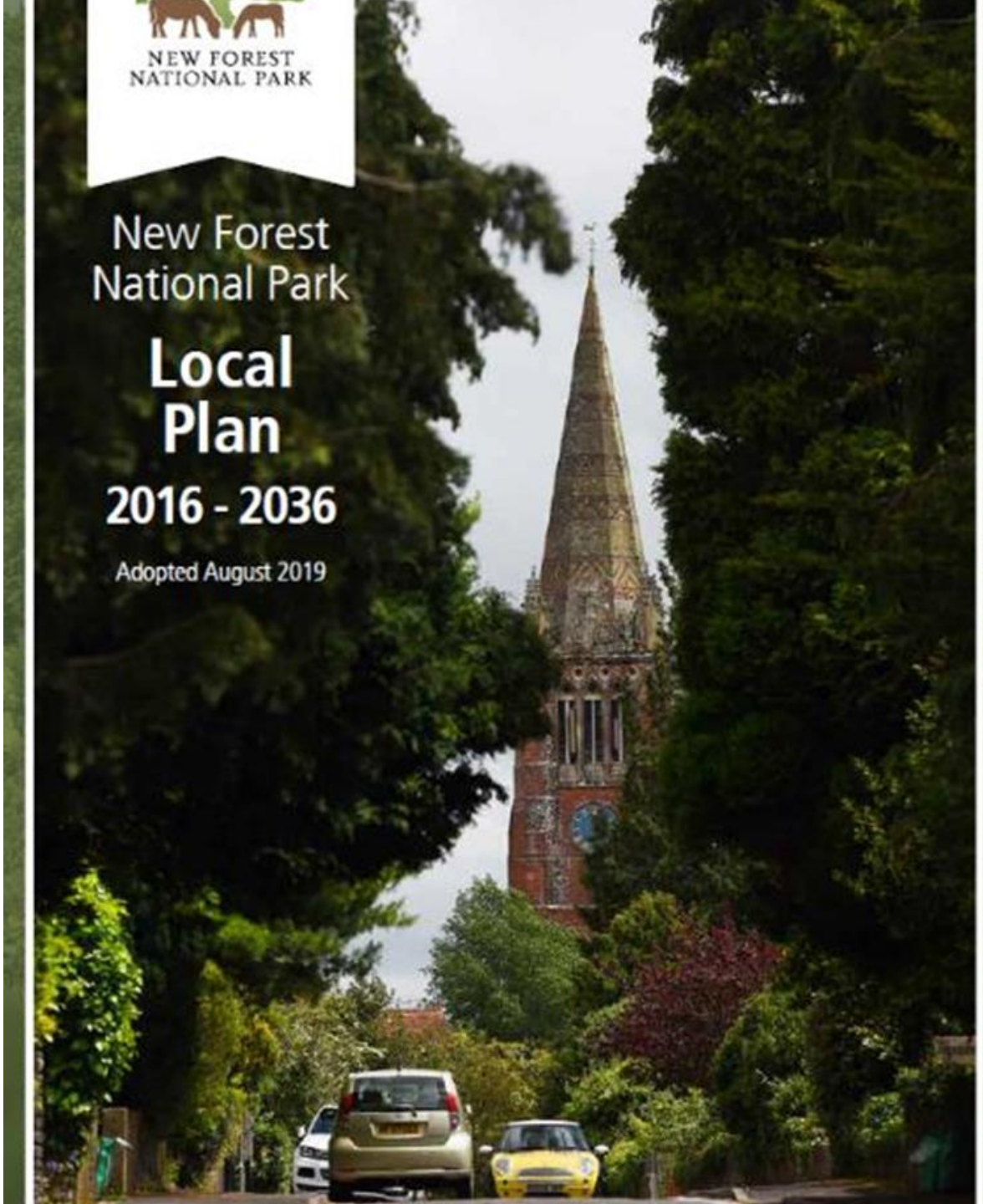
The Waterside

- A326 proposals
- Solent Freeport
- Fawley Waterside
- Securing environmental outcomes and green infrastructure



Local Plan Review

- To commence this year
- Key topics:
 - Climate change
 - Nature Recovery
 - Commoning
 - Housing Need
 - Managing recreational pressures
- Awaiting new national 'development management' policies from Government





NEW FOREST
NATIONAL PARK

National Park Update

7 March 2024