



New Forest National Park

Protecting together, shaping tomorrow

Chief Executive's Report

July 2023



PROTECT

Green and Blue Horizons from City to Forest scheme closes

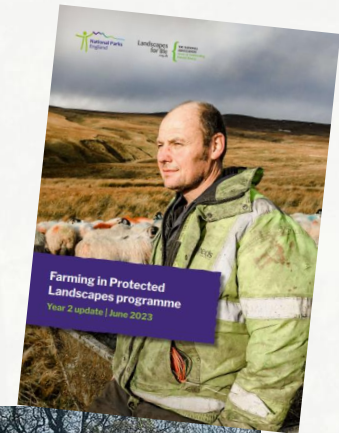
- Five organisations; £800k investment
- 19 jobs created/retained – 75% of which have continued
- Land the size of 147 football pitches improved for nature and climate
- 4,500 volunteer hours
- 200 events reaching 9,500 people
- Fort Climate Centre jobs supported.



PROTECT

Farming in protected landscapes (FiPL)

- 22 projects completed in Year Two
- Total of £547,000 invested in the Forest so far
- New Forest NPA FiPL projects showcased at a recent National Parks All Party Parliamentary Group
- FiPL workshop with Defra and eight protected landscapes.



CASE STUDIES

Brooklands Farm
New Forest National Park

Crispin Sampson took on Brooklands Farm, in the west of the New Forest, in 2019. His ambitions for the farm have been supported by a FiPL grant for a suite of initiatives to increase the quality, area and connectivity of habitat available for nature.

This has included the installation of wildlife boxes, including a box to encourage Pine Martens to use the farm woodland. It is hoped that this will help improve the woodland for other native species too.

Fencing cattle out of the North Gorley drain has helped to reduce bank erosion, sediment pollution and contamination of the watercourse as well as creating a riparian buffer to improve nature connectivity.

Rainwater harvesting will allow newly planted hedging and trees orchard to be watered in drought years and reduce runoff in winter.

Grant value: £4,830

Farmer Crispin Sampson with his cattle
© New Forest National Park



PROTECT

#OurNatureStory

Throughout June and July call for people to share their memorable moments in the outdoors.

Aim: To build a picture of how people connect with nature, and what makes it special to them.

#OurNatureStory is a compilation of snippets, poems, words, films, pictures, photos and memories.

Uplifting messages about nature are more engaging than doom and gloom. People are known to connect with stories.

PROTECT

#OurNatureStory



Really enjoyed our 30km cycle in the #NewForest - our home - yesterday. So amazing to see so many people and wildlife enjoying the forest. Can breathe so easy here! I challenge @MeganShersby @HollyKateB @ale...



Emma Ackerley (@EmmaAckerl...)
20 days ago



Whenever I need a break from the everyday humdrum I disappear into the woods to recharge my enthusiasm. Nature never fails to cheer me up. @NewForestNPA #OurNatureStory...



Christina Lundberg (@zt1na)
a day ago



It's #WorldEnvironmentDay and we'd love your help to share 🌻 🌱

Join us to Re:New Nature in the New Forest and wider area



The New Forest can be viewed as the core of heavily protected habitats with four surrounding areas, each with its own landscape character. We have identified four nature recovery themes that will be critical to the future of the Forest.

Northern Forest

Habitat highways, sustainable farming, carbon rich soils, veteran trees.

1
Making space for people and nature
Expanding habitats to be more connected and resilient and providing quality nature-rich green spaces near to where people live.

Eastern Waterside

Urban greening for people and nature, hedgerow highways, blended and extended habitats, coastal rebuilding for resilience.

The future of farming **2**

Harnessing current shifts in policy and economics for the benefit of the Forest's wildlife and way of life.

Core

Ancient woodland, clean waters, mosaic of connected and recovering habitat, sustainable grazing.

Western Avon

Threading rivers, healthy floodplains, sustainable smallholdings.

Southern Coast

Resilient future-proof coastlines, connecting sea to forest, habitat recovery, farming with wildlife.

3
Coastal resilience
Working with natural processes to safeguard and expand opportunities for coastal wildlife.

4
River valleys
Using valleys to connect the core habitats of the Forest with those of the coast and adjoining countryside.

Bournemouth

Fordingbridge

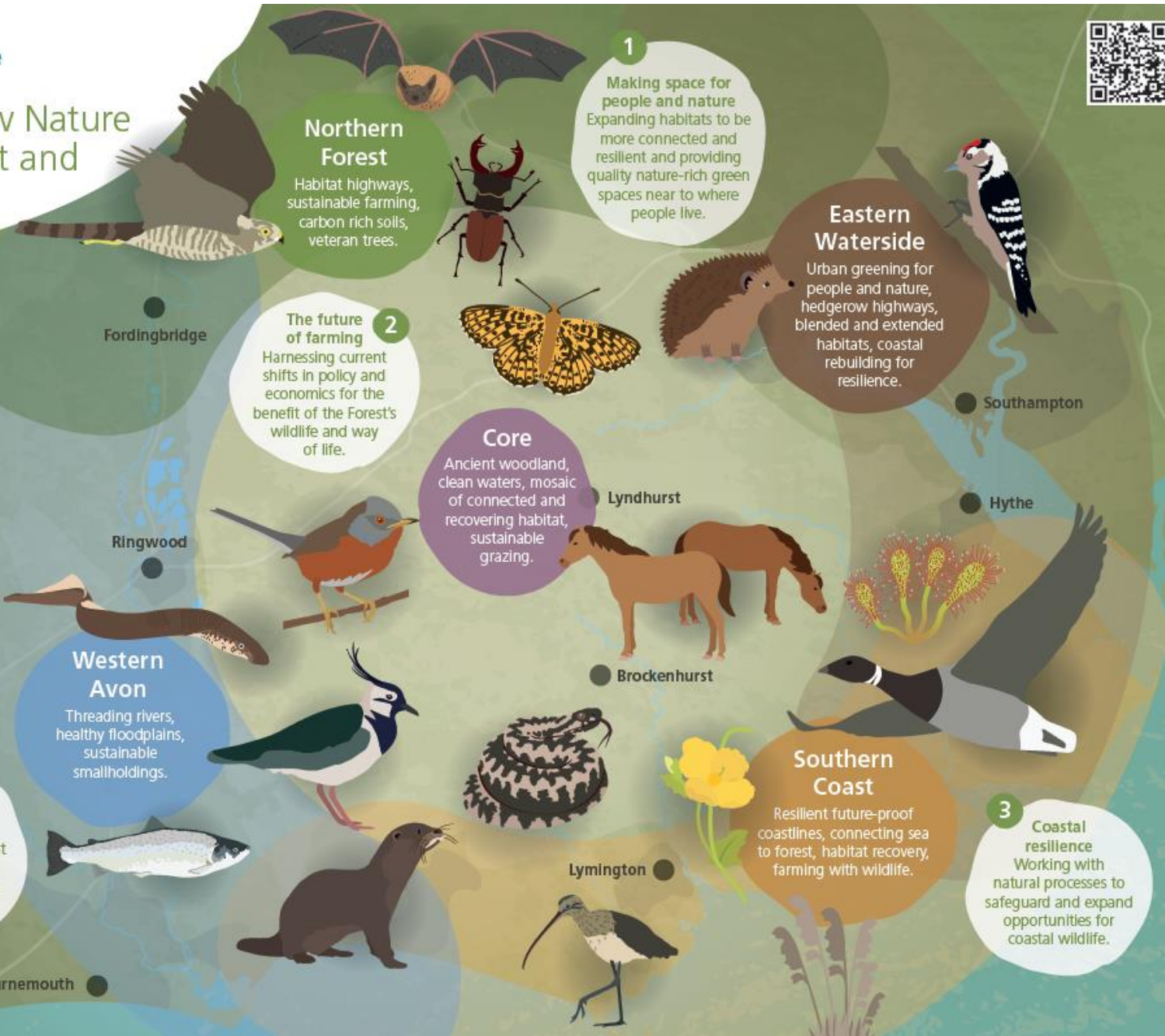
Ringwood

Lyndhurst

Hythe

Brockenhurst

Lymington



PROTECT

Public Space Protection Orders and updates to New Forest Code

- Two PSPOs to ban feeding/petting ponies and fires/BBQs
- Rangers and enforcement officers trained
- New Forest Code updated (print materials and online toolkit)
- Translations into five languages.



Engage – Explain – Educate – Enforce

PROTECT



PROTECT



Planning service

- 194 Applications determined with 92% approval
- Targets for determining applications exceeded
- Welcomed Royal Town Planning Institute president and colleagues



PROTECT

Planning policy

- Statement of Community Involvement consultation
- Hampshire Minerals and Waste Plan review
- Permitted Development consultation
- Strategic approach across seven planning authorities on habitat mitigation.



PROTECT

Totton Goes Wild Together conference

- Summit on Earth Day chaired by Lord Montagu
- Part of a week-long series of events



ENJOY

Rangers – season update

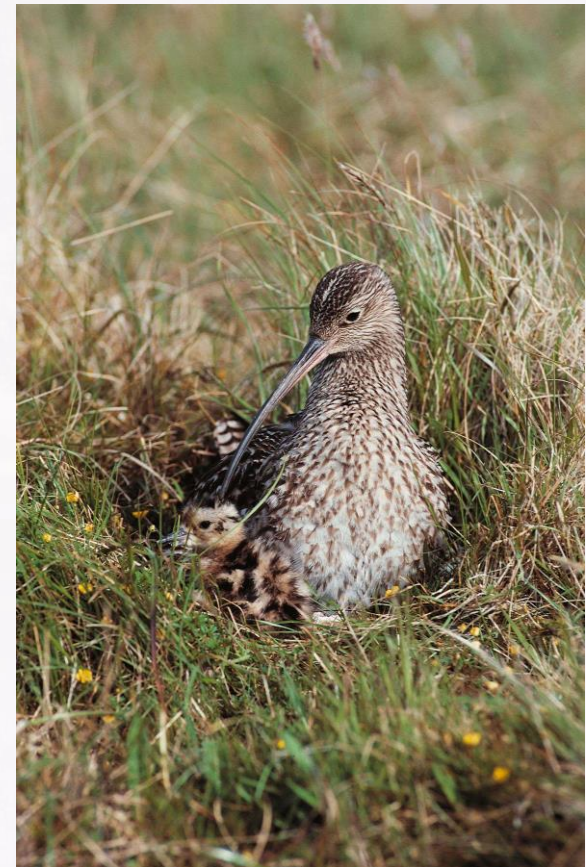
- Joint operations with the Police, FE, NFDC, NFD OG and CDA promoting responsible dog walking across the Forest
- 150 people attended a Wild Play Day at Bartley Park run by NPA rangers and the Friends of Bartley Park during half term.
- Dawn returns in Assistant Ranger post.



ENJOY

Campaigns

- Ground nesting birds
- Foals and stallions as part of the animal accidents campaign, with the messages #KeepYour Distance and #PassWideAndSlow widely shared



ENJOY



Follow the New Forest code

The New Forest is a unique place with rare wildlife and free-roaming livestock. Thank you for helping us care for this special place by following the simple New Forest code:



Scan me to find out more



Keep your distance from the animals – don't feed or touch them*



Keep dogs under control. Don't let dogs approach or chase any animals



Stick to the permitted cycle tracks



Take home litter and dog waste



Park only in car parks



Drive with care – animals on the road!



No fires or barbecues*



No wild camping



Help wildlife by keeping to the main tracks

*Failure to comply may result in a fixed penalty of £100 or being taken to court and a fine of up to £1,000.



newforestnpa.gov.uk

thenewforest.co.uk

NPA 01226



ENJOY

Rhododendron survey

- Public survey launched during invasive species week
- People can use online form to report location and size of this 'pretty invader', and upload pics
- FE is managing rhododendron across the Open Forest as part of the HLS scheme
- Nearly 40 public recordings so far.

**(900 Ambassadors and 1,035
volunteer hours this year so far)**



ENJOY



Inclusive New Forest

- Welcoming refugees and asylum seekers from Southampton and Winchester Visitors Group with Forestry England for Refugee Week (below)



ENJOY

Hayden Bridgeman Recognition

- CNP New Perspective Award nominee
- Europarc Natural Heritage Scholarship



NATIONAL PARK PROTECTOR AWARDS **GWOBRAU GWARCHODWYR PARCIAU CENEDLAETHOL**

NEW PERSPECTIVES AWARD
Nominees 2023

Pembrokeshire Coast Next Generation
Pembrokeshire Coast National Park

Hayden Bridgeman
New Forest National Park

Roots to Recovery
Pembrokeshire Coast National Park

Sameed Asghar
several National Parks in the UK and abroad

Echoes Within the Earth
South Downs National Park

ENJOY

Education and Youth

- School visits for 270 pupils
- Wild play event at Bartley Park attended by 150 people
- Exxon family and friends day (right)



ENJOY



Artist in residence

- Arts Council England grant of £45,000 for three-year extension to artist in residence scheme following successful pilot scheme
- Common ground exhibition by second artist in residence Beccy McCray held at SPUD in Sway
- Call for new artist in residence received a good response.



ENJOY



New Forest Show

- Our Nature Story theme for our NPA stand
- Reception to launch Re:New Nature challenge
- Delivered Higher Level Stewardship display for Verderers stand
- National Park Awards with the CLA celebrates its 10th anniversary



ENJOY

PedAll

- Over 800 riders March – May
- 18 organisations
- Confidence rides
- Bike safety and maintenance drop-in
- Grants from SW Rail (£44k); Peter Harrison Foundation (320k); Energise Me/Cycling UK (£3k)



PROSPER

New Forest Tour

- Launched 1 July
- New Forest District Residents' discounted ticket.



PROSPER

Inaugural Greenprint Conference

- Focus on growing green skills and jobs
- 120 delegates from public/private/third sectors
- Sponsored by and held at University of Southampton in conjunction with Solent LEP.



PROSPER



Greenprint Priorities:

Net zero with nature – providing the leadership necessary to reduce carbon emissions... and build zero carbon economy and communities

Natural health service – improving physical and mental health and wellbeing and tackling health inequalities through greater access to our world class natural environments

World class blue/green environments – protecting, restoring and improving our distinctive environments, enabling their ecosystem services to contribute to a strong economy and a healthy, inclusive society

Creating great places through quality in design and build – encouraging an innovative approach to creating high quality, inclusive and sustainable places for people and nature

Centre for excellence in green skills and jobs – tackle local skills gaps and economic inequalities by building a future workforce which can seize the opportunities offered by innovation in key sectors of our economy



UNIVERSITY OF
Southampton

Southern
Policy Centre



PROSPER

Green Careers, Skills and Jobs

- Brockenhurst College Employment Fair
- New to Nature interns
- Junior Rangers
- Early green careers group



PROSPER

New Forest Marque

- AGM in April
- 13% drop in members (161 to 140) but six new members recruited since
- 2023 local produce guide distributed.



PROSPER



Affordable Housing

Sites due to deliver more than 110 affordable houses for local people, plus new greenspace for the local communities

Allocations adjacent to the former Fawley Power Station, land at Whartons Lane in Ashurst, and land at Church Lane in Sway all have Planning Committee resolutions to grant planning permission



EXCELLENCE

Partnership Plan

- Leaders Panel met face to face for the first time in March



EXCELLENCE

Partnership Plan

The five themes are:



Nature recovery – creating a network of restored and expanded habitats enabling wildlife to thrive.



Net zero with nature – delivering nature-based climate solutions through local partnerships.



An inclusive National Park – pride in the New Forest and connection with nature for all.



Thriving Forest – sustaining a living, working landscape with commoning at its heart.



Team New Forest – communities, organisations and businesses working together and all contributing – being greater than the sum of our parts.

EXCELLENCE

Partnership Plan

- Partnership Plan tour visiting Aubrey Farm, Keyhaven and Hurst Castle to hear about coastal projects



EXCELLENCE

South Downs National Park Authority Chair and Chief Exec visit



EXCELLENCE

Discovery Days

Half a day for all staff to have new experiences, learn about the Forest and spend time with other staff

Days included:

- Introduction to beekeeping with the New Forest Marque
- A helping hand for nature
- Litter pick on Hurst Spit
- Buddy bikes with PedALL
- Trees in the planning process



EXCELLENCE

National Park City visit (Southampton and London)

**LONDON
NATIONAL
PARK CITY***



EXCELLENCE

New Forest District Council Chief Exec Kate Ryan at All Staff meeting



EXCELLENCE

Future Countryside Summit



- Shining a spotlight on the issues facing the countryside
- Future Countryside brought together a group of voices and views from across the country who all shared one ambition; to ensure rural Britain plays a positive part in the lives of all of the people of Britain.

EXCELLENCE

Future Countryside Summit



EXCELLENCE

Annual Review 2022-23

