



New Forest National Park

Protecting together, shaping tomorrow

Chief Executive's Report

January 2023



PROTECT

Undergrounding

- Remarkable transformation to bring landscape back to its natural state, last seen many decades ago
- Undergrounding of 6.6km of power cables near Burley by Scottish and Southern Electricity Networks
- £750,000 project with our Landscape Officer, Natural England and Forestry England.

Before and after:



PROTECT

Local List

- 2,351 heritage assets added to local list
- Range from places of worship, to schools, military remains, K6 red phone boxes...



Bartley Junior School



Canada Common Methodist Church

PROTECT

FiPL and Future Farming

£157,000 in grants spent in 2021-22
£156,000 committed so far 2022-23
£100,000 to allocate by March 2024.

Most of the support for landowners
this quarter = planting trees and
hedgerows; harvesting rainwater to
alleviate flooding issues.



PROTECT

Franchises Lodge nature reserve

Invasive rhododendron, pine trees and gorse removed from Bronze Age Barrows on the RSPB nature reserve at Hamptworth.

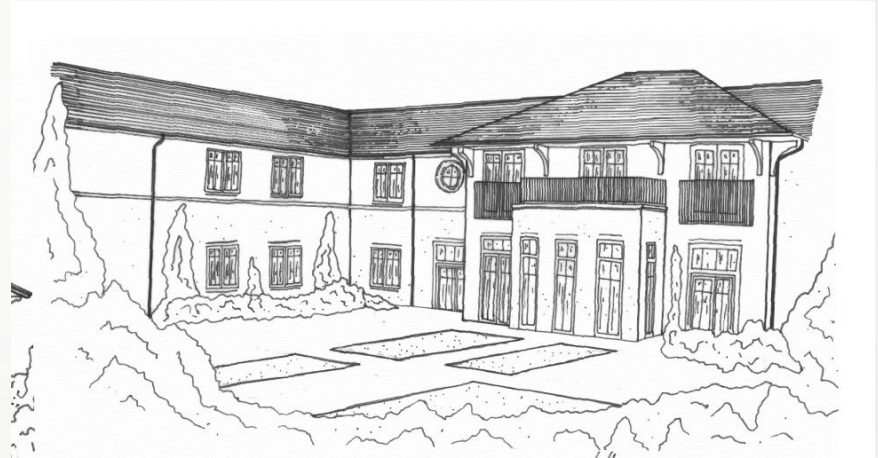
- Led by NPA archaeologists
- Conservation work carried out by NPA volunteers
- Funded as part of the £200,000 we allocated from National Grid Landscape Enhancement Initiative



PROTECT

Planning

- 93% approval despite challenges with new Agile software system
- Local planning agents meeting
- Major application for Ashurst Hospital site received.



PROTECT

Tree team

- 100% decisions in eight weeks
- Recent successes include pruning advice which saved nine oaks at Norley Wood, one in East Boldre and this one (right) in Sway.
- Family Trees event at New Park on 4 February with families invited to plant 70 trees.



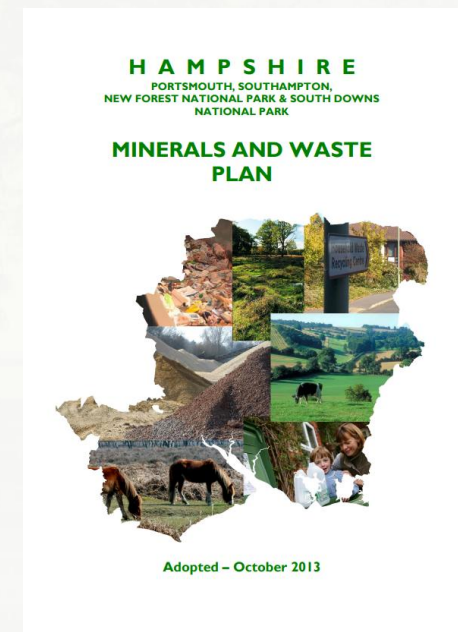
Mature oak at Sway
after works

PROTECT

Minerals and Waste consultation

Partial update to the Hampshire Minerals and Waste Plan which will guide minerals and waste decision-making in the Plan Area up until 2040.

Consultation ends 31 January.



PROTECT

Habitats Mitigation Scheme

Working with eight neighbouring planning authorities, Natural England and Forestry England on strategic approach to mitigating recreation impacts as a result of developments around the National Park.

Report by consultants Footprint Ecology looking at package of strategic access and monitoring measures is due in the summer.

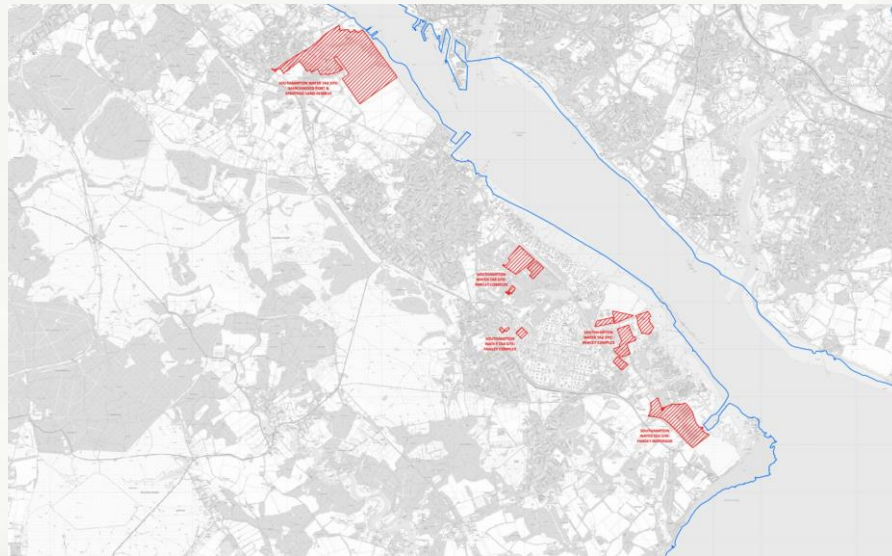


PROTECT

Freeport and Investment Zones

- Letter to Secretary of State setting out our position on Investment Zone for Solent Freeport
- Dropped in Autumn Statement
- Solent Freeport launch in December.

Solent Freeport
tax sites



PROTECT

Green and Blue Horizons from City to Forest scheme

- £800,000 scheme ends in March
- 2km of hedgerow planted by volunteers this quarter
- led by Land Advice Service near Beaulieu.



PROTECT

National Parks Nature Recovery meeting in Lake District

- Part of national lead role (Nature Recovery)
- All Conservation Directors
- 1200,000 hectares of potential nature recovery projects to contribute to 30x30 Montreal Target
- RSPB bilateral including visit to Haweswater.

#NationalParks4Nature



ENJOY

Public Space Protection Order consultation

NFDC proposing two PSPOs focussed on:

- Feeding and petting commoner's animals in the National Park
- Lighting fires and using BBQs principally on the Crown Lands.

Consultation ends 27 January.



ENJOY

New Forest Code

- Operation Mountie attended by rangers to reduce animal accidents
- Operation Wolf to tackle fly tipping.
- Animal accidents cards printed redesigned and reprinted
- New eco car window stickers printed to support the campaign
- Print materials supported by £2k grant from Love the Forest.



ENJOY

Results

2022 New Forest Action Plan



Sharing the New Forest Code

250 social media posts
1m+ impressions

85k ↑ engagements
(up from 55k last year)

8 press releases

500k+ people reached via newsletters and publications

8k people engaged at local events

21 tourism information boards across key villages, towns and Forest campsites with the New Forest Code featured on them

Code shared in New Forest car parks

Community support

New Forest Ambassadors reached

950 members

30% ↑ increase in numbers this year

Forestry England volunteers gave over

2,000 hours

to supporting patrols and conservation projects across the forest

Forestry England's team helped the commoning community manage the annual drifts for New Forest livestock with **80** car park and cycle route closures, and **150** signs to inform the public



Continued high-levels of community commitment and support for litter picking

BBQs and fires

Heatwave conditions led to an

80% increase

in outdoor fires across Hampshire and the Isle of Wight region compared to 2021



63 retailers

have now removed disposable BBQs from sale in the New Forest, including several major supermarkets

Forestry England fire teams supported the fire service tackle over

20 major blazes

"No fires or BBQs" signs deployed across the Forest

Litter

Fly-tips on the Forest reduced by **50%** compared to 2021

Litter picks on **122kms** of forest roads collecting over **100** bags of rubbish

NFDC water refilling points provided enough water to replace **2,000** half litre plastic water bottles.



Patrols

7,000+ hours of ranger patrols

32 joint patrols with the emergency services

70 dedicated ground nesting bird patrols and monitoring sessions



Taking Action

17 joint "Operation Mountie" actions to improve animal safety on Forest roads



8 locations

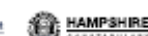
150 cars stopped on Forest roads

41 fines issued and education given to drivers

Responsible dog walking pop up events in New Forest car parks

A series of joint fly-tipping spot checks on vehicles carrying waste across the Forest

150 fixed penalty notices issued for waste related offences



ENJOY



Visitors

- Over 700 responses to visits survey
- 'Visitor welcome' film with partners being finalised and includes New Forest Code messages
- Visitor publications – Pocket Guide and Essential Guide
- New Local Information Points.



ENJOY



Volunteering and ambassadors

- 2,635 volunteer hours given by 145 people last year
- Three litter picking events with Freshwater Habitats Trust and 30 people
- Volunteer Fair on Sunday 29 January.



ENJOY



Pedall

- New Project Manager Shelley Filby joined in November
- NPA Member Steve Trow joined as a trustee
- Thanks to David Harrison who retired as a trustee
- 82 sessions with 510 riders in October to December
- Work to transform Ashurst site into a cycling community hub.



ENJOY

Walking and cycling festival

- 15 October to 6 November
- Celebrated its 10th year
- 96 walks and cycle rides guided by experts
- Wide range and number of partners involved
- 700 people took part.

New events included photography walk with our artist in residence, exploring experiences of being a person of colour in the Forest.





ENJOY

Art initiatives with SpudWORKS in Sway

National Park Artist in Residence:

- Marie Smith finished her residency with the impactful exhibition 'We Belong Here'. exhibition is currently on display at Lymington Town Hall foyer.
- Artist Beccy McCray completed her month in residence. Exhibition and events planned for May.
- Applying for ACE funding.



spudOPEN 2022:

- First year saw 106 entries from across the region on the theme 'Our Changing Landscape'.
- 52 pieces of work were selected for the exhibition at spudWORKS, which ran for six weeks.

PROSPER



Sustainable Communities Fund energy grants

£10,000 in grants to two organisations from our Green Groups network: New Forest Transition and Eco Sway.

Encouraging sustainable lifestyles by helping communities to save energy and reduce their carbon emissions. Includes Schools energy project, home energy event and household audits with thermal cameras.



PROSPER



Rangers - Warm hub and CAB food bank support

Following Citizens Advice New Forest presentation to all staff about Cost of Living Campaign, rangers have been supporting the local food banks and warm hubs by helping and also providing New Forest-themed activities for families who attend and may not engage in other NPA events.



Are You Worried about the Cost of Living? Get Help in the New Forest Now

The New Forest Partnership (New Forest District Council, Citizens Advice New Forest, Community First, Youth and Families Matter and Waterside, Ringwood and Lyminster (NFBB) food banks) has launched a campaign to help New Forest residents to cope with the cost of living crisis.

Get support with Cost of Living and check which state benefits you may also be entitled to claim

You could be one of the 7 million people in the UK missing out on income-related state benefits - £15bn of benefits go unclaimed each year. Even if you already claim state benefits, you might find other benefits that can help.



PROSPER



New Forest Marque



Successful Eats and Treats Fair at Brockenhurst College and series of Christmas fairs.

Brilliance in Business Awards - 11 Marque members and associates were shortlisted across the categories. Sway Butchers won the Marque food and drink award.

'Turkey and tree' map of Marque suppliers promoted.



PROSPER

Green Halo Conference – Investing in our future



- 40 organisations/businesses represented
- Speakers included Lord Bob Kerlake, former Head of Civil Service and now Chair of FuturePlaces, BCP.

PROSPER

Health and wellbeing

- Dr James Alden, National Park Health Fellowship report - £27m = value of avoided healthcare costs provided by the New Forest
- Attended conference in Exmoor National Park for UK National Park leads on health and wellbeing, learning and outreach
- Generation Green learnings.



PROSPER



Green Skills and Jobs

- Early green careers network being set up
- Presentation at Careers Leaders and Enterprise Advisor Network event hosted by Solent LEP.



PROSPER

New Forest Tour

- Ran for 12 weeks
- 45,166 passenger journeys
- Slight increase in average daily passenger journeys relative to 2021.
- New heavily-discounted residents' ticket, with a season ticket working out at just over £2 per day
- Positive feedback including 4.7 rating (out of 5) on TripAdvisor
- Facebook reach of over 27,000.



EXCELLENCE

Re:New Forest - leaders panel



New Partnership Plan Leaders' Panel met online on 16 January

Role:

- be a focal point to drive cross-organisational working against the Partnership Plan
- work together to deliver projects, securing the alignment of shared resources.

Will meet four times a year, including a 'partnership tour' of projects delivered in the National Park by partners.



EXCELLENCE

Defra Annual Review and finance challenges

- English National Park Authorities Chairs letter to The Times about diminishing resources (50% reduction in real terms since 2010)
- Balanced budget for current financial year
- Partnership approach to ensure positive outcomes for the Forest
- Resources Task and Finish group.



EXCELLENCE

Remembering Julian Johnson

- Chairman of the National Park Authority 2010 - 2014
- NPA Member for 12 years until 2017.

Julian's steadfast leadership of the Authority came at an important time in the life of a new National Park.

It was a great pleasure and privilege to work with him and many of us have fond memories of his time as a member and our Chair, roles which he conducted with care, integrity and wisdom.

