

NEW FOREST  
NATIONAL PARK

# National Park Update

1 September 2022

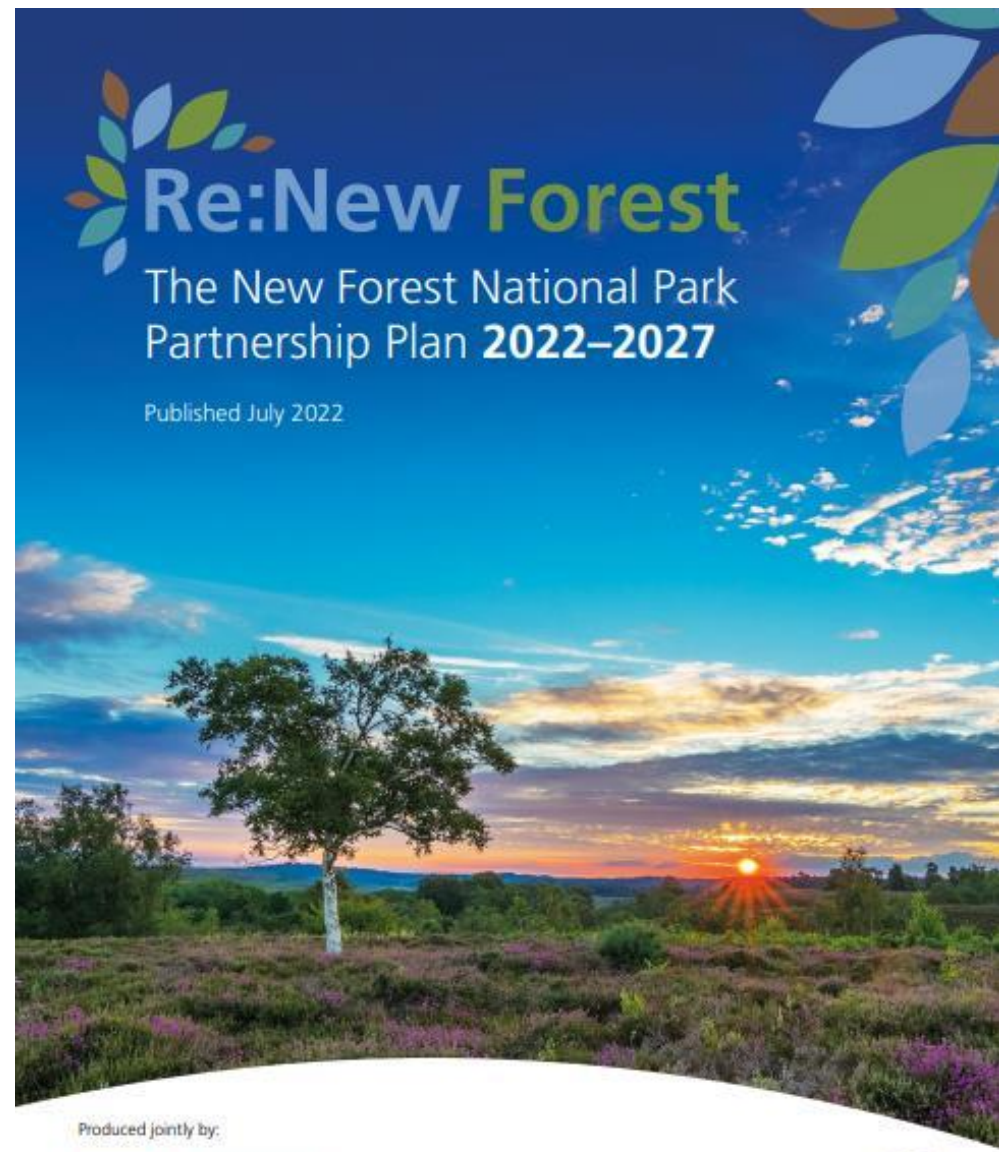


# Re:New Forest

The New Forest National Park Partnership Plan **2022-2027**

Summary version

Produced jointly by:



# Re:New Forest

The New Forest National Park Partnership Plan **2022-2027**

Published July 2022

Produced jointly by:







## Make the New Forest National Park a more sustainable and nature rich place

Over 600 people have signed up to the Nature Challenge at least four...

- I will cut waste and reduce, reuse and recycle
- I will save energy
- I will reduce the impacts of my travel
- I will help wildlife
- I will follow the New Forest Code
- I will drink locally
- I will eat seasonally and eat more plants

### What happens next?

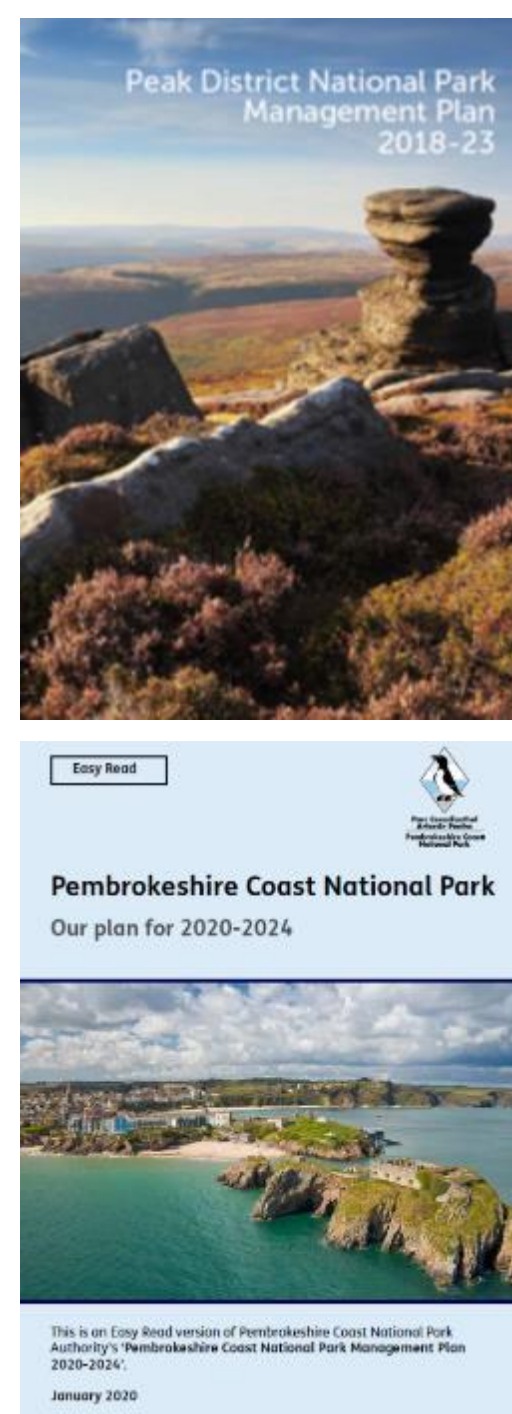
Find out how to turn your pledge into action with our sustainable living tips. Signposts to join our online and discover local community groups in your town or village for support.

For all the latest news on the New Forest Climate and Nature Challenge, please sign up to our email newsletter at [news@newforestnpa.gov.uk](mailto:news@newforestnpa.gov.uk)

[newforestnpa.gov.uk/pledge](http://newforestnpa.gov.uk/pledge)

# The role of National Park Management Plans

- Under Section 66 of the Environment Act 1995, all National Parks are legally required to have a Management Plan (often known as the 'Partnership Plan') for their area.
- The role of the Partnership Plan is to help guide the work of all those with responsibilities or an interest in the National Park.
- The Partnership Plan recognises that the delivery of the two statutory National Park purposes rests with a wide range of bodies, not just the National Park Authority.
- The Partnership Plan is for the National Park as a place and not specifically for the National Park Authority or any other organisation.



# Partnership Plan preparation & public consultation

- Prepared with input from the main statutory organisations who share responsibility for delivering the aims and objectives of the Plan.
- Its scope was set by a widely advertised call for views at the New Forest Show in 2019, followed by a public ‘snapshot’ survey in 2020 with over 2,700 responses.
- The resulting draft Partnership Plan received responses from over 380 individuals and organisations as part of the public consultation in summer 2021.
- The feedback and comments received have helped to strengthen the Plan.

%	comment
16%	cycling; better access, linked paths, promote
12%	commoning damaging the Forest / overgrazing
11%	sceptical about achieving objectives / nothing practical / no details / too vague / wishful thinking / jargon
11%	promote sustainable travel / transport; establish travel plan
10%	more social / affordable housing required
10%	too many visitors / don't encourage
9%	better enforcement needed / fines
8%	better education needed (e.g. NF code)
7%	support 30mph speed limit
6%	balance different views and challenges
5%	too much traffic
5%	too much (future) housing development in/around the Forest
5%	too many non-locals / ban second homes
5%	New build homes should be carbon neutral / better insulation



# The New Forest faces significant challenges

**69%**  
of rivers and  
**100%**  
of lakes failed to meet  
'good' ecological status  
in the New Forest  
catchment

**47%**  
of Sites of Special  
Scientific Interest (SSSI)  
protected habitats in  
unfavourable condition

**£643,000**  
the average price  
for a house  
within the  
National Park in  
2019 – the most  
expensive English  
national park

**200+**  
people waiting for  
affordable housing  
in the National Park

**130,000**  
new homes being built  
within 15 miles of the  
New Forest by 2036

Over  
**15 million**  
day-visits each year

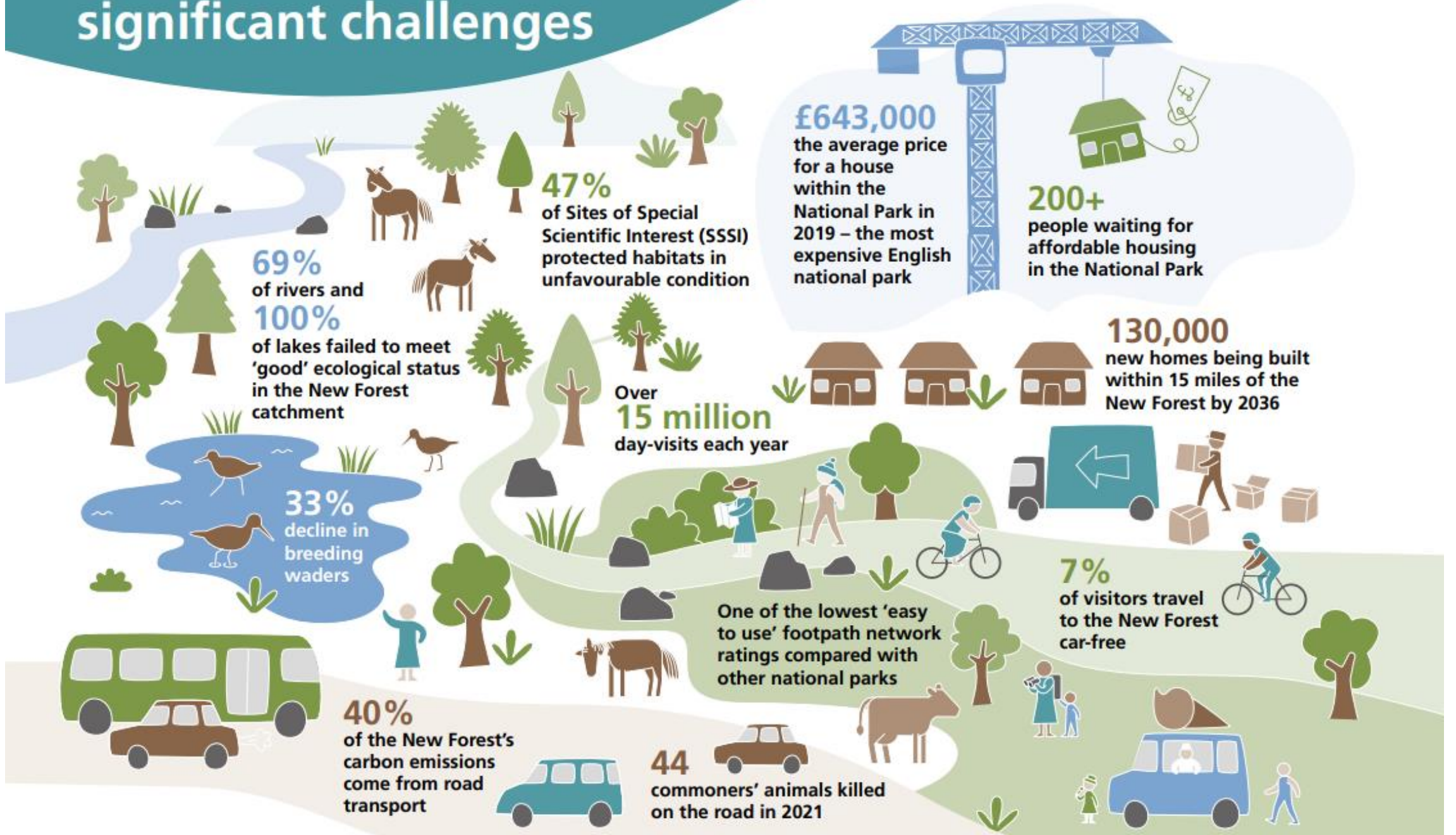
**33%**  
decline in  
breeding  
waders

One of the lowest 'easy  
to use' footpath network  
ratings compared with  
other national parks

**7%**  
of visitors travel  
to the New Forest  
car-free

**40%**  
of the New Forest's  
carbon emissions  
come from road  
transport

**44**  
commoners' animals killed  
on the road in 2021







# Re:New Climate Net Zero with Nature

## Challenges

**We're already seeing warmer wetter winters and hotter, drier summers, rising sea levels, an increasing frequency of extreme weather events and longer periods of higher fire risk.**

**By 2027:** Significant cuts in carbon emissions are secured through restoring natural habitats and enabling carbon capture.

## Case study

Over **£174,000** has been given to farmers, landowners and commoners in 2021–22 for projects that support the natural environment, mitigate the impacts of climate change, provide public access opportunities or support nature-friendly, sustainable farm businesses. The three-year Farming in Protected Landscapes Programme from Defra is administered by the New Forest NPA.



Image: Volunteers at Pondhead Conservation Trust which received a Farming in Protected Landscapes grant.  
© Pondhead Conservation Trust.

## Action:

- Develop a 'net zero with nature' programme with partners and communities to ensure the National Park is **carbon neutral by 2050**.
- Promote and develop best practice in **nature-based solutions** to meet climate and nature goals.
- Help **communities** to take action on the climate emergency.





# Re:New Nature Nature Recovery

## Challenges

The New Forest has some of the most precious habitats in western Europe and they and many wildlife species are in decline.

**By 2027:** Habitats are more resilient, restored, expanded, connected and maintained to enable wildlife to thrive, both within and beyond the National Park.

## Case study

Since 2010, **20 miles** of rivers and streams have been transformed and around **5,000 hectares** (more than 7,000 football pitches) of protected wetland habitats have been improved thanks to the **£22 million** Verderers of the New Forest Higher Level Stewardship scheme. The scheme is a partnership with Forestry England, the New Forest National Park Authority and the Verderers.



Image: Aerial view of the restored Fletchers Water. © Big Wave

## Action:

- Produce a **local nature recovery plan** to:
  1. maintain, restore and expand habitats so that they are resilient and support thriving wildlife
  2. mitigate recreational pressures
  3. ensure recreation takes place in the most resilient areas.
- Harness the benefits we receive from nature in the New Forest ('natural capital') to generate increased **investment and projects** to enhance nature and the services it provides.
- Help landowners, farmers and commoners move to the new **Environmental Land Management Scheme (ELMS)** of subsidies which rewards working with nature.





# Re:New People

## An inclusive National Park

### Challenges

**Green space is vital for our health and wellbeing. Yet in a recent survey only 58% of people within the 10% most deprived areas around the New Forest had recently visited the National Park.**

**By 2027:** People within reach of the New Forest of all backgrounds, abilities and socio-economic groups value the National Park as an important part of their lives and seek to care for it.

### Case study

Inclusive cycling charity **PEDALL** takes people with disabilities out for cycle rides to experience the Forest using a fleet of specially-adapted bikes. With two hubs at Burley and Ashurst, riders and carers took part in nearly 2,800 slots in 2021/22, **with the help of over 30 volunteers.**



Image: Pedall inclusive cycling charity.

### Action:

- Develop opportunities to deliver a **'Natural Health Service'** within and beyond the National Park, through a programme of measures provided by communities, businesses and the health and environment sectors.
- Foster a **greater appreciation** of the New Forest, its landscape and cultural heritage.
- Help new and diverse audiences **connect with nature**, discover why the National Park is special and how to care for it, with a particular focus on young people.





# Re:New Place Thriving Forest

## Challenges

Around 35,000 people live here with 2,500 businesses and some of the highest house prices in Britain. It's a living, working Forest and we need to make sure we keep it that way.

**By 2027:** A living, working Forest is sustained through its rich cultural heritage and natural beauty and support for commoning. There is a vibrant local produce sector, access to affordable homes and sustainable tourism, and high-value businesses and employees are attracted.



Images: Hockey's Farm Shop, South Gorley.

## Action:

- Protect **cultural heritage** assets and support commoning and local produce to sustain the unique natural beauty of the landscape and culture of the New Forest for future generations.
- Invest in **green skills and jobs**, creating a recognised reputation as a centre of excellence for a growing green economy.
- Provide **more affordable housing**.





# Re:New Partnership Team New Forest

## Challenges

**We can't do this on our own – it's only through the combined efforts of communities, businesses and partners that we can secure the future of the New Forest.**

**By 2027:** Communities, businesses and organisations work together as a team to bring the Partnership Plan vision to life, sharing knowledge, ideas and resources to deliver the best for the Forest.

## Case study

The Green Halo Partnership brings together businesses, charities, universities and public sector organisations to focus on valuing nature and its benefits and ensuring it flourishes as an integral part of how we live and work.

[greenhalo.org.uk](http://greenhalo.org.uk)



Image: Green Halo Partnership conference at Ordnance Survey.

## Action:

- Establish new ways of **engaging with our communities**, hearing their ideas and encouraging grassroots action.
- Ensure the New Forest is **leading the environmental agenda** by delivering exemplary projects and partnerships and showing how these can support and shape policy and sustainable decisions beyond our boundaries, both regionally and nationally.
- Develop a **data, evidence and insights** capability to underpin our collective decisions and actions and use up to date technology to help us manage and communicate across the National Park more effectively.



# Delivery of the Partnership Plan actions

- A new **Partnership Plan Leaders Panel** will be established to oversee the implementation of the Plan and to lead the review of future updates of the Plan. This new Partnership Plan Leaders Panel will also activate and monitor the actions in the Plan.
- Delivery and performance of the Plan will be evaluated by tracking progress against identified measures of success. An annual progress report will detail key outputs and case studies from projects and other activities.





Other matters...

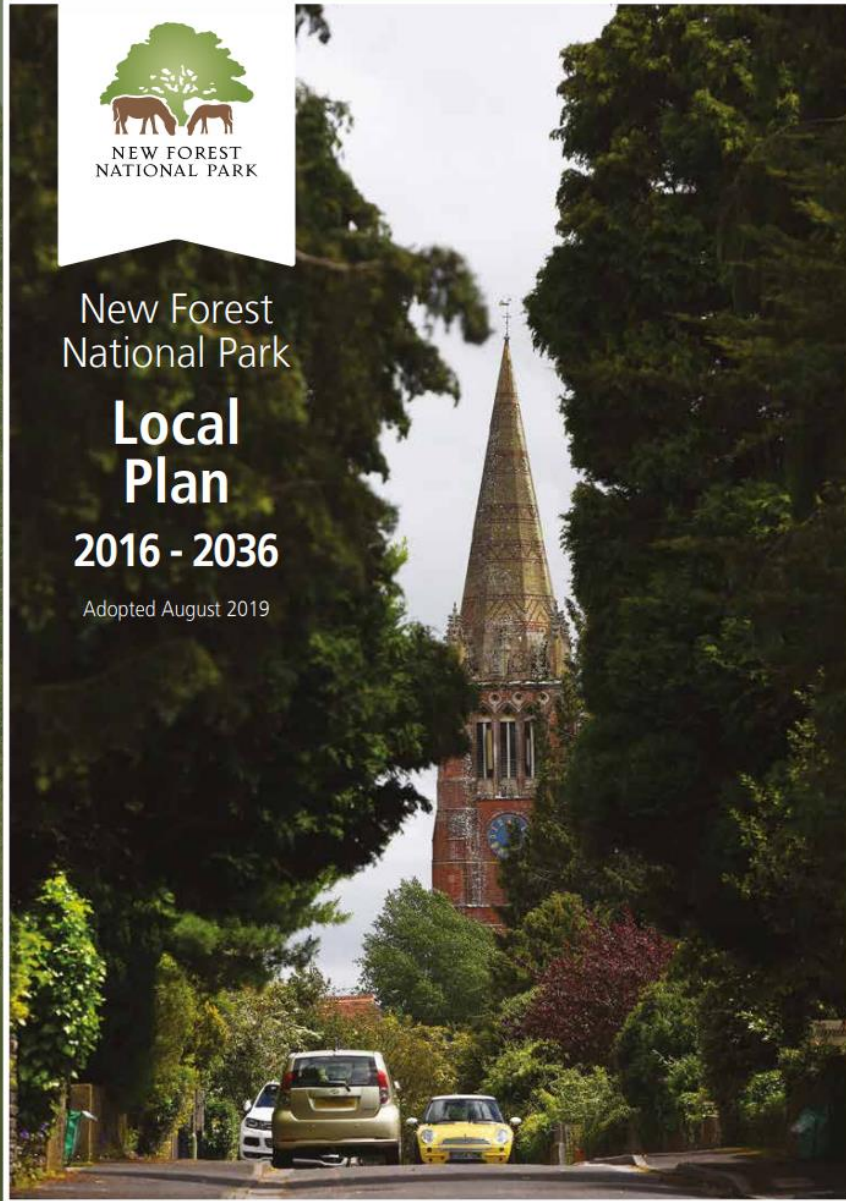


New Forest  
National Park

# Local Plan

2016 - 2036

Adopted August 2019

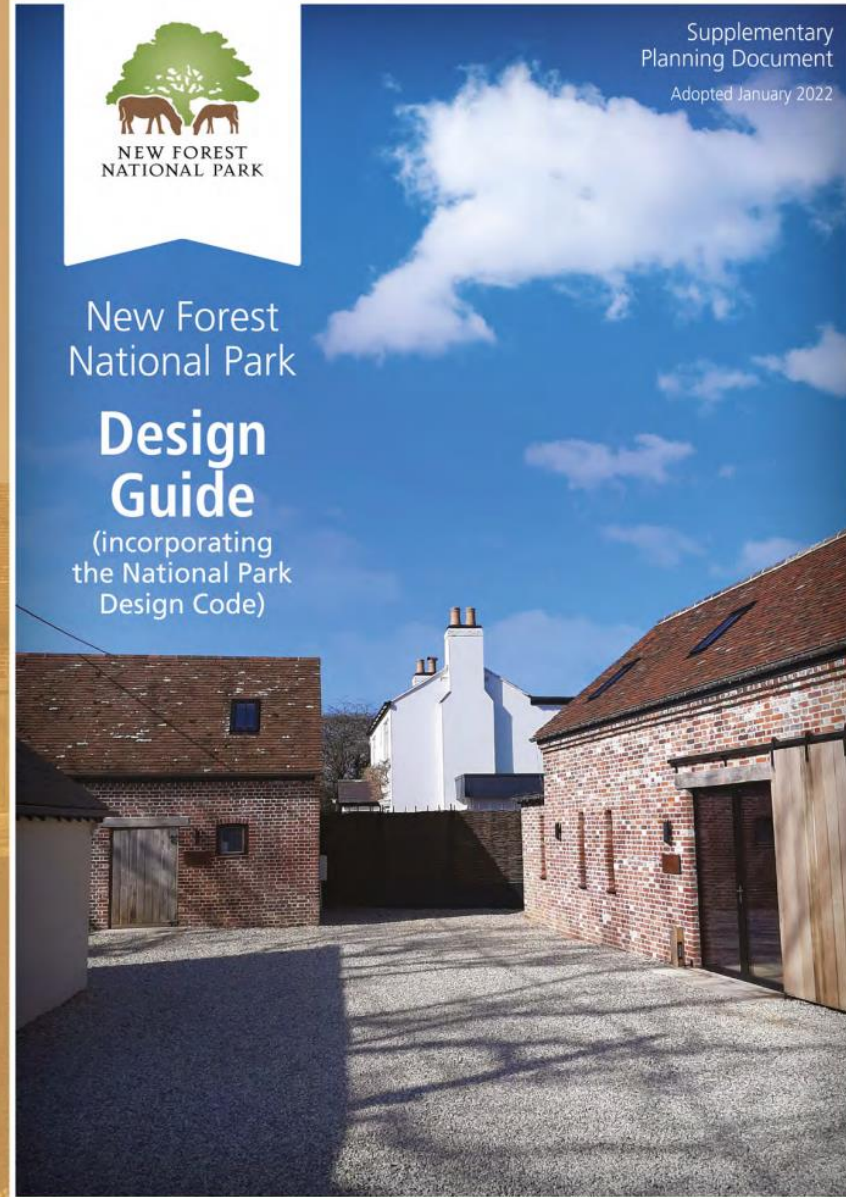


New Forest  
National Park

# Design Guide

(incorporating  
the National Park  
Design Code)

Supplementary  
Planning Document  
Adopted January 2022





# New housing at Church Lane, Sway



PROPOSED VIEW 1







# Promoting the NF Code



**Follow the New Forest code**

The New Forest is a unique place with rare wildlife and free-roaming livestock. Thank you for helping us care for this special place by following the simple New Forest code:

**Be Forest Friendly!**

 <b>Keep your distance from the animals – don't feed or touch them</b>	 <b>Keep dogs under control. Don't let dogs approach or chase any animals</b>	 <b>Stick to the permitted cycle tracks</b>
 <b>Take home litter and dog waste</b>	 <b>Park only in car parks</b>	 <b>Drive with care – animals on the road!</b>
 <b>No fires or barbecues</b>	 <b>No wild camping</b>	 <b>Help wildlife by keeping to the main tracks</b>

Forestry England  
NEW FOREST COMMONERS  
Hampshire County Council  
New Forest DISTRICT COUNCIL  
go new forest  
National Trust  
wildlife TRUSTS Hampshire & Isle of Wight Wildlife Trust  
love the forest

# Evidence to support PSPO





# Article 4 Direction – pop up campsites



# England Coast Path - Calshot to Portsmouth path now open





## LOCATION OF SOLENT FREEPORT SITES

