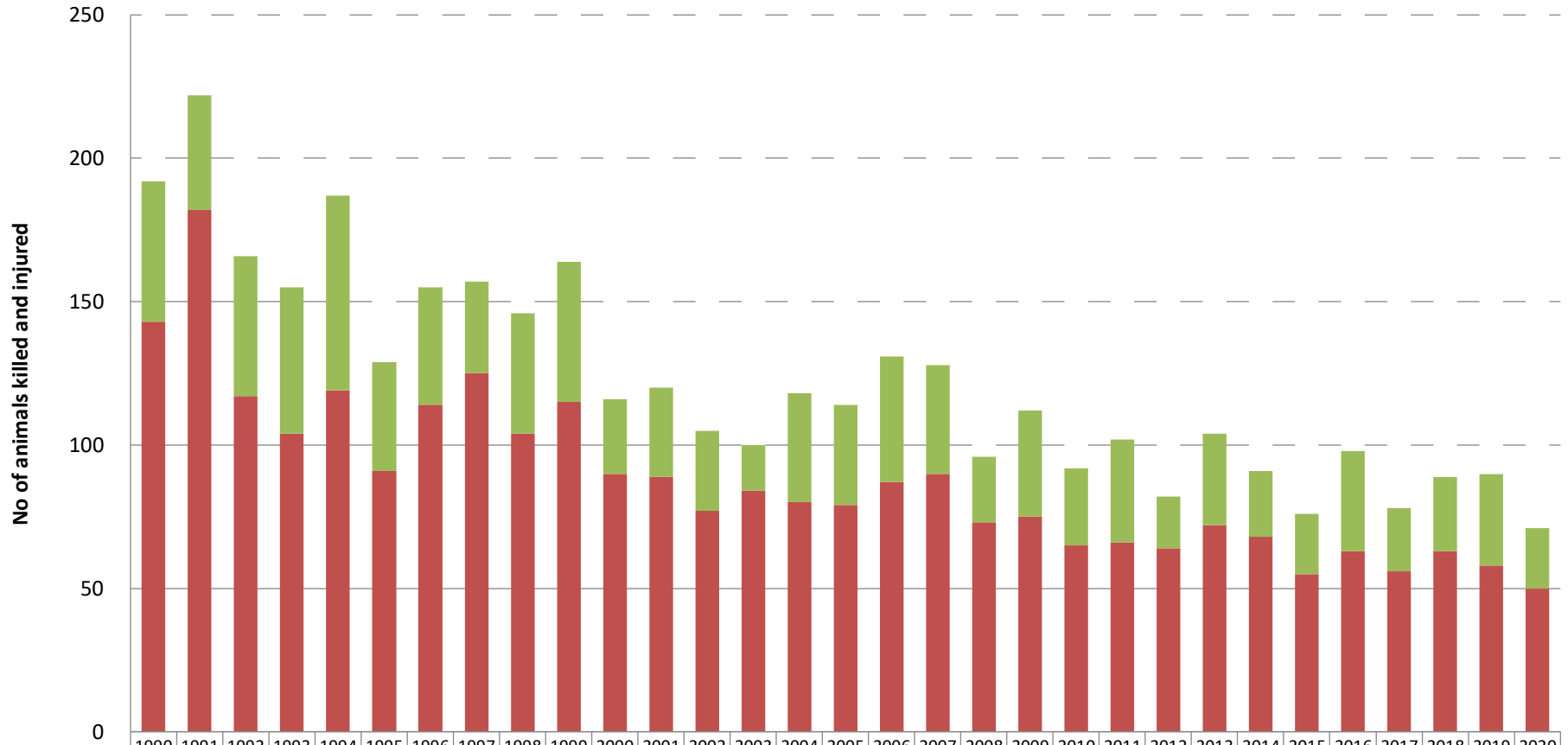
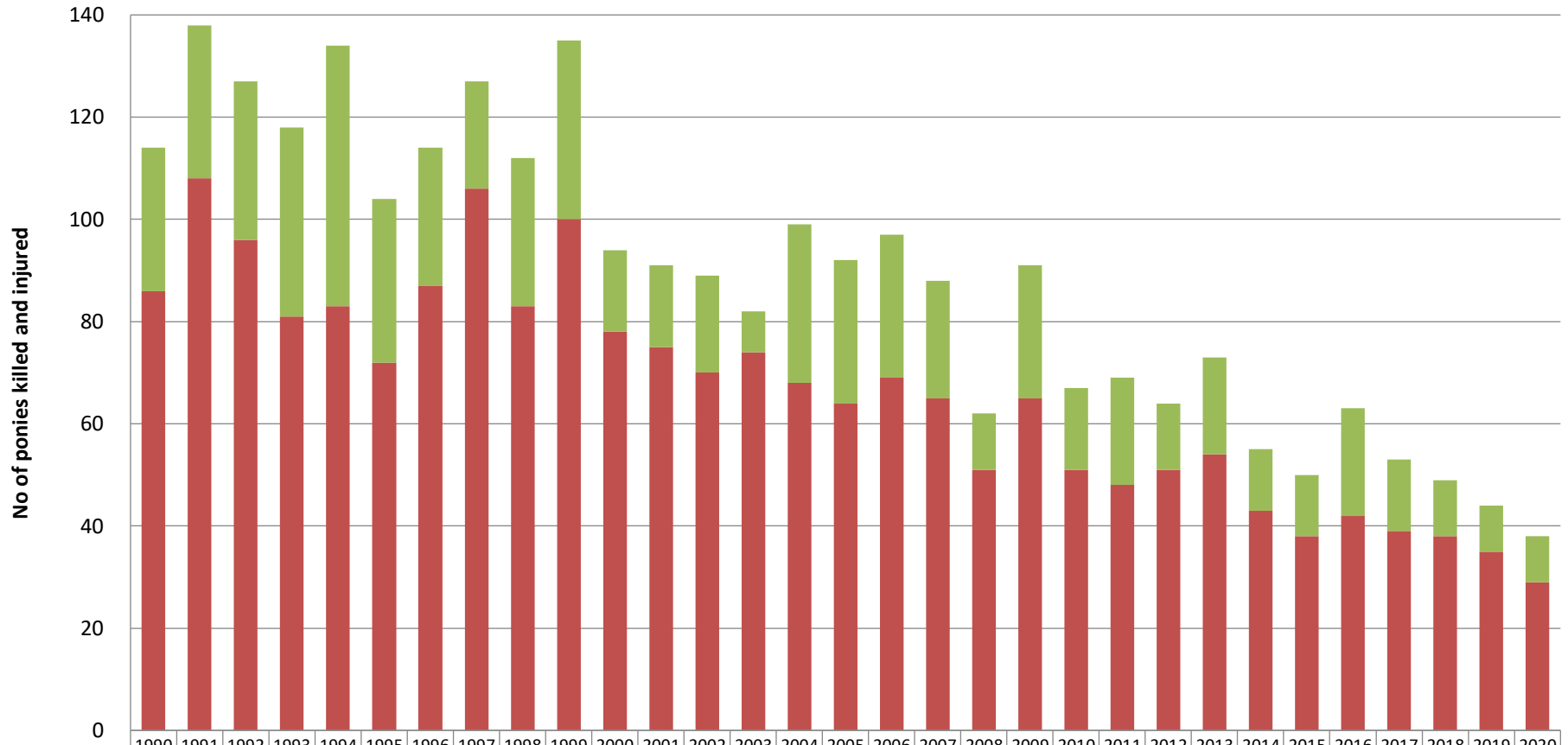


No of animals killed and injured in accidents 1990 - 2020



	1990	1991	1992	1993	1994	1995	1996	1997	1998	1999	2000	2001	2002	2003	2004	2005	2006	2007	2008	2009	2010	2011	2012	2013	2014	2015	2016	2017	2018	2019	2020
Depastured	5753	6405	5667	6168	7269	7185	6378	6480	6808	7030	7172	5615	5306	5360	6419	7353	7602	7452	7959	7923	7954	7593	8756	9235	9356	10714	12045	13165	13661	15303	15542
% killed	2.49	2.84	2.06	1.69	1.64	1.27	1.79	1.93	1.53	1.64	1.25	1.59	1.45	1.57	1.25	1.07	1.14	1.21	0.92	0.95	0.82	0.87	0.73	0.78	0.73	0.51	0.52	0.43	0.46	0.38	0.32
Injured	49	40	49	51	68	38	41	32	42	49	26	31	28	16	38	35	44	38	23	37	27	36	18	32	23	21	35	22	26	32	21
Killed	143	182	117	104	119	91	114	125	104	115	90	89	77	84	80	79	87	90	73	75	65	66	64	72	68	55	63	56	63	58	50

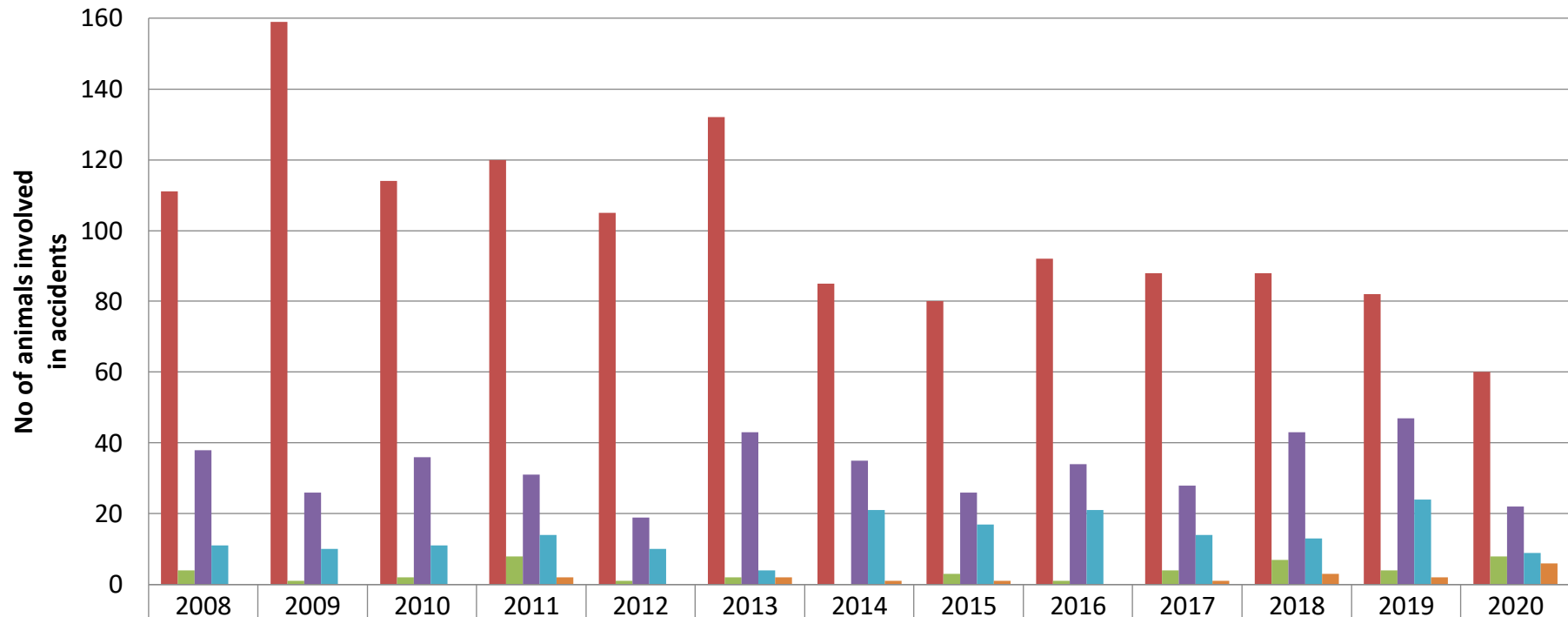
No of ponies killed and injured in accidents 1990 - 2020



	1990	1991	1992	1993	1994	1995	1996	1997	1998	1999	2000	2001	2002	2003	2004	2005	2006	2007	2008	2009	2010	2011	2012	2013	2014	2015	2016	2017	2018	2019	2020
Depastured	3,516	3,489	3,567	3,760	4,112	3,805	3,573	3,461	3,593	3,885	3,990	3,799	3,440	3,477	3,913	4,314	4,235	4,536	4,752	4,841	4,836	4,595	4,992	5,120	5,076	5,364	5,516	5,583	5,748	5,869	5,936
% killed	2.45	3.10	2.69	2.15	2.02	1.89	2.43	3.06	2.31	2.57	1.95	1.97	2.03	2.13	1.74	1.48	1.63	1.43	1.07	1.34	1.05	1.04	1.02	1.05	0.85	0.71	0.76	0.70	0.66	0.60	0.49
Injured	28	30	31	37	51	32	27	21	29	35	16	16	19	8	31	28	28	23	11	26	16	21	13	19	12	12	21	14	11	9	9
Killed	86	108	96	81	83	72	87	106	83	100	78	75	70	74	68	64	69	65	51	65	51	48	51	54	43	38	42	39	38	35	29

No of animals involved in accidents 2008 - 2020

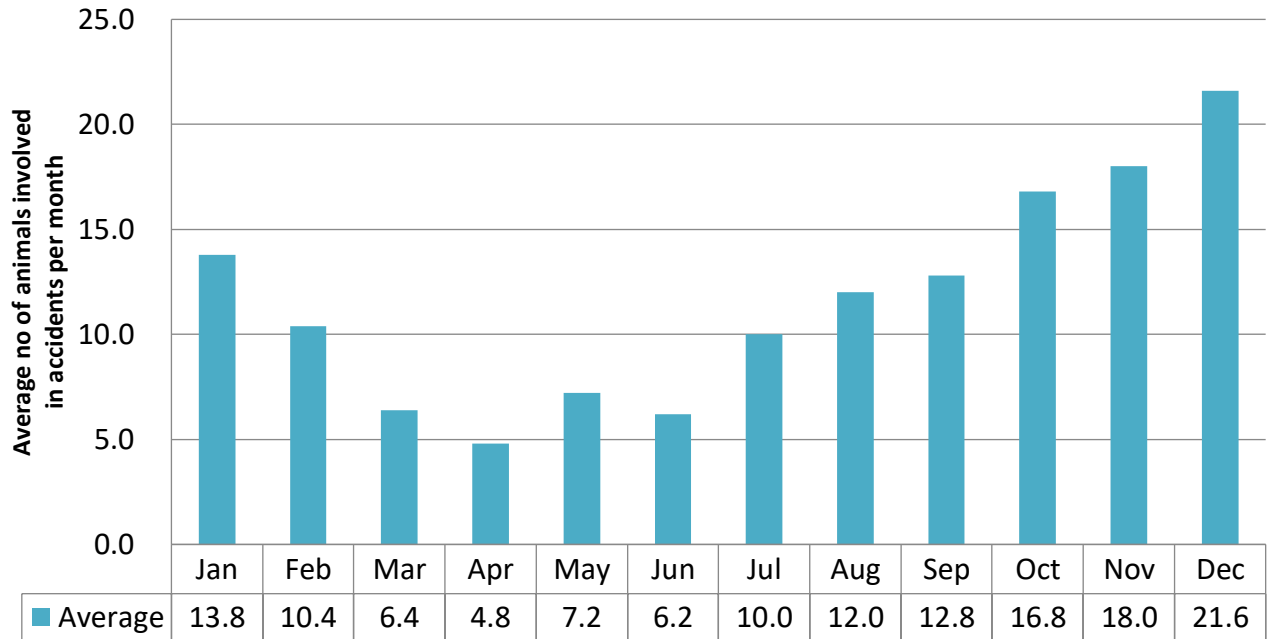
Includes accidents that caused death or injury and where there were no known injuries



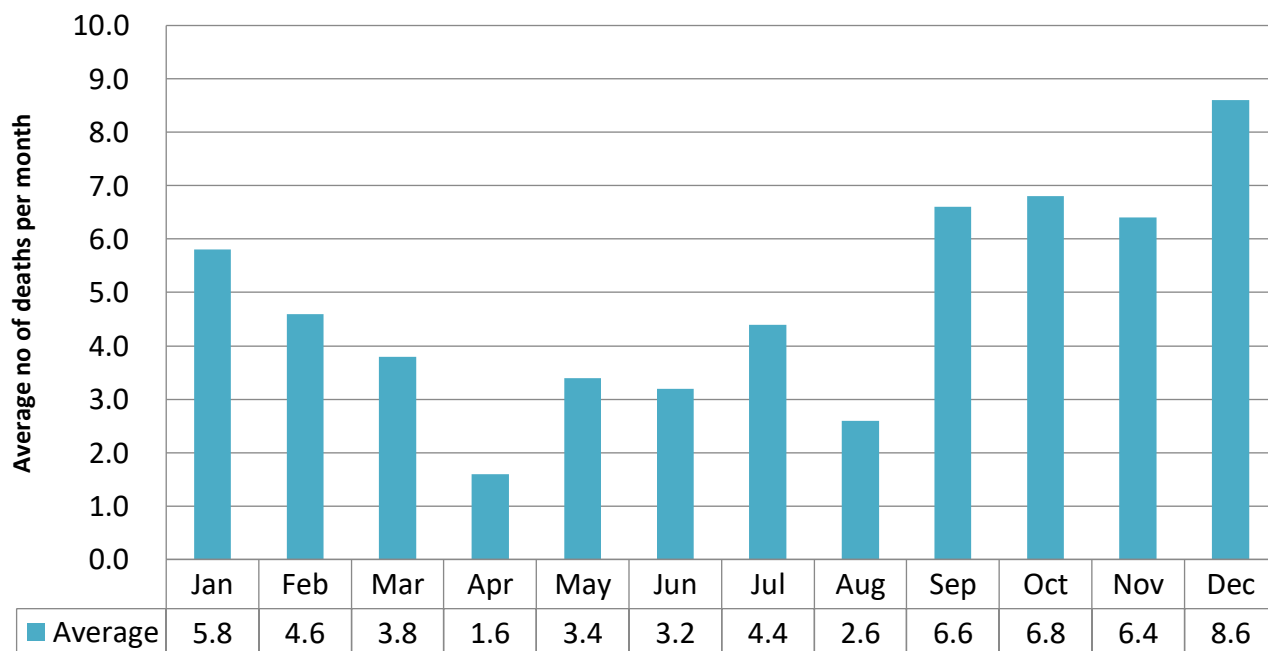
■ Pony	111	159	114	120	105	132	85	80	92	88	88	82	60
■ Pig	4	1	2	8	1	2	0	3	1	4	7	4	8
■ Cattle	38	26	36	31	19	43	35	26	34	28	43	47	22
■ Donkey	11	10	11	14	10	4	21	17	21	14	13	24	9
■ Sheep	0	0	0	2	0	2	1	1	0	1	3	2	6

Monthly variations in the average number of animals involved in accidents per year 2016 - 2020

Includes accidents that caused death or injury and where there were no known injuries



Monthly variations in the average number of animal deaths per year 2016 - 2020



Hourly variations in the average number of animals involved in accidents per year 2016 - 2020

Includes accidents that caused death or injury and where there were no known injuries

