

**FREE**

# The New Forest Essential Guide

to the National Park 2020

Maps  
Events guide  
Places to explore  
Walking & cycling

The New Forest Essential Guide  
is brought to you by:



Forestry England



# Welcome

The New Forest National Park is a spectacular, yet fragile landscape that is a haven for rare wildlife species - with a range of organisations working together to care for this special place.

Forestry England looks after the nation's 1,500 woods and forests, including much of the best-known open land and productive woodlands in the New Forest. We work closely with other organisations in the area including Hampshire County Council, the Hampshire and Isle of Wight Wildlife Trust, the National Trust, New Forest District Council and the New Forest Verderers.

The New Forest National Park Authority ensures this outstanding landscape has the highest level of protection to preserve it for the nation to enjoy for generations to come.

Throughout this guide you'll find ideas of what to do, where to go and things to see whether you're a first time visitor or you live within the New Forest National Park.

See our events pages (15-17) for more details, or find out more at:  
[forestryengland.uk/newforest](https://forestryengland.uk/newforest)  
@EngNewForest  
[newforestnpa.gov.uk](https://newforestnpa.gov.uk)  
@newforestnpa  
newforestnpa

## Step into the spectacular New Forest - a world capital for wildlife

The New Forest is a wonderful place for wildlife with over half the National Park protected for its international importance for nature.

Many rare species of plants and animals live among the unique mosaic of habitats ranging from ancient woodland to pristine wetlands, beautiful heathland and spectacular coast.

The New Forest is one of only a handful of places in England where you can find some of the UK's most endangered and rare wildlife. These include several species of bat, insects such as the large marsh grasshopper now only found in three places in England, and the curlew: a ground-nesting bird, now under threat of extinction globally.

The vital habitats the Forest provides are shaped by the free-roaming animals - ponies, cattle, donkeys, sheep and pigs. They're known as the 'architects of the Forest' because it's their grazing which keeps the scrub at bay and creates the landscape we know today.

The Forest and the nature it supports is not immune to the global threats facing our environment. Everyone can play a part in helping to protect this special place by following our caring for the forest code on page 13.

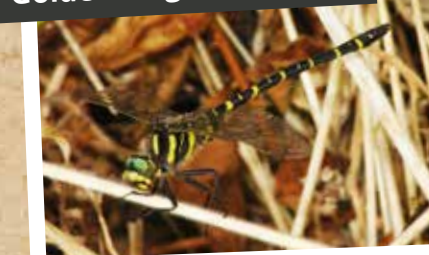
Emerald damselfly



New Forest pony



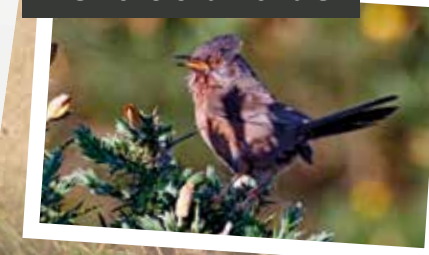
Golden-ringed dragonfly



Cattle



The Dartford warbler



### Did you know?

- The New Forest isn't new! It was established by William the Conqueror in 1079 as his Nova Foresta (new hunting ground).
- The New Forest has the highest concentration of ancient and veteran trees in western Europe, with more than 1,000 recorded.
- An incredible 63% of Britain's insects, 75% of all dragonfly species, and all six UK native reptiles are found here.
- There are five different species of deer which roam freely across the Forest.
- Heathland is rarer than rainforest and the New Forest has the most extensive area of lowland heath left in Europe. These areas attract rare ground nesting birds such as the Dartford warbler and nightjar, which fly here all the way from Africa every year.
- A third of British wild flower species grow in the New Forest.

The curlew





# Walking in the New Forest

## Follow our waymarked walks and trails...

The following trails are marked on the ground by wooden marker posts with coloured bands. An overview map of each route is displayed at the start point in the car park. All routes are circular and will bring you back to your starting point. The numbers refer to map locations on centre pages.

### ② From Bolderwood car park

#### **Deer Watch Trail** 0.75km/0.5 miles

A short stroll leading you to a deer-viewing platform overlooking fields where wild herds of fallow deer are frequently seen. The path is a moderately smooth, gravelled surface with gentle slopes and benches along the way. The trail is accessed by a gate which has a low catch.

#### **Jubilee Grove Trail** 1.5km/1 mile

Including the deer fields, this meandering route leads you past some majestic trees, the oldest of which date back to 1860. Benches from which to admire their beauty can be found along the way. The path is a moderately smooth, gravelled surface with two short 'but fairly steep' slopes and frequent resting places. The trail is accessed via a gate which has a low catch.

#### **Radnor Trail** 3km/2 miles

A longer route which takes you into the heart of the Forest and across the Bratley Water stream. Benches and picnic benches are located along the trail. The path is a moderately smooth, gravelled surface with two short 'but fairly steep' slopes and frequent resting places. The trail is accessed via a gate which has a low catch.

### ⑥ From Blackwater or Brockhill car parks:

#### **Tall Trees Trail** 2.5km/1.5 miles

Follow the marker posts and you will be guided along a shady path beneath mighty Douglas firs and redwoods that were planted during the reign of Queen Victoria. The path has a fairly smooth, gravelled surface. The trail is flat with frequent resting places and no gates.

#### **Blackwater Arboretum Trail** 0.75km/0.5 miles

A circular route which leads you past tree species from around the world. By following the unique panels you can use your senses to discover the secrets that these trees hold. Benches are located along the walk. The path has a fairly smooth, gravelled surface with one very gentle slope.

### ⑦ From Whitefield Moor or Puttles Bridge car parks:

#### **Ober Water Trails**

##### 1.5km/1 mile (red trail)

Two circular routes follow the Ober Water midway between its source and the sea. Close to this meandering stream is the open grassy expanse of Whitefield Moor. The paths are moderately smooth, gravelled surfaces and compacted grassy ground with some gentle slopes and a few resting places. This trail can be muddy after wet weather.

### ③ Reptile Centre car park:

#### **Reptile Trail** 2km/1.5 miles

Enjoy a circular walk through the woods. The trail mainly follows a fairly smooth, gravelled surface.

### ⑧ Wilverley car parks:

#### **Wilverley Wander** 4.2km/2.5 miles

A longer and more informal trail which winds through this diverse and working woodland. The paths are moderately smooth, gravelled surfaces with some short, steep slopes. Please note that part of this trail is on a cycle route.

### ⑤ Knightwood car park:

#### **Knightwood Oak** Less than 0.25 miles

A short stroll to one of the most famous trees in the New Forest. Believed to have been planted before 1600, this tree is still going strong and is a spectacular example of the ancient practice of pollarding. Benches are located throughout. The path has a fairly smooth, gravelled surface.

**Miles of waymarked trails to explore!**



Learn more about the special qualities of the New Forest while enjoying a healthy stroll.

## Free walking routes app

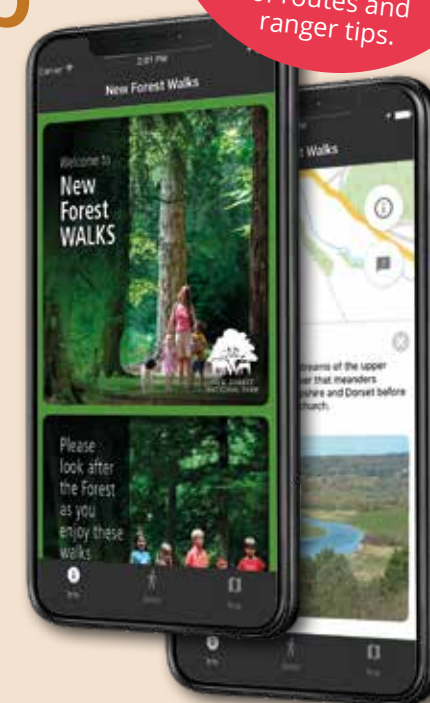
There's an easy way for you to follow the best walking routes in the New Forest this year – the National Park's walking routes app.

Available for Android and iPhone, the app features 27 walking routes of various lengths from coastal strolls to woodland walks.

It makes following the routes easier than ever, with GPS navigation allowing you to see your location at all times. This removes the need to read a map or decipher written directions, making it perfect for the casual walker.

Each route on the app also features points of interest, where you can find out interesting history or nature facts along the way.

Download for free at [newforestnpa.gov.uk/walksapp](http://newforestnpa.gov.uk/walksapp)



**FREE**  
Walking pack  
Subscribe to our email newsletter at [newforestnpa.gov.uk](http://newforestnpa.gov.uk) and receive a free online walking pack of routes and ranger tips.

## No smartphone? No problem!

All walks are available to download and print at [newforestnpa.gov.uk/routes](http://newforestnpa.gov.uk/routes)

## The New Forest Walking Festival 2020



Learn more about the wildlife, history and culture of the National Park during this popular two-week festival which hosts dozens of guided walks led by knowledgeable local experts.

The wide range of themed walks typically include birdwatching, fungi spotting, hidden histories, bark ranger walks for pooches and woodland wild play events for children.

The Festival will return from 17 October to 1 November with walks announced by August 2020.



# We've got the trails...

are you ready to ride?

Explore the National Park by bike with over 100 miles of family-friendly cycle routes.

The off-road routes are marked with numbered wooden posts. You can navigate your way around the tracks by referencing these numbers to our cycle trail map or following the Ordnance Survey grid references also on the markers.

The network is easily accessible from railway stations at Ashurst, Brockenhurst and Sway and links the main New Forest villages.

Visit: [newforestnpa.gov.uk/routes](http://newforestnpa.gov.uk/routes) for all the best trails.

Please follow both the Highway Code and the **New Forest Cycling Code:** [newforestnpa.gov.uk/cycling](http://newforestnpa.gov.uk/cycling)

**Off-road cycling in the New Forest is permitted only on waymarked routes.** Please take a look at our cycle trail map for more information.



## Adventure cycling

For more adventurous cyclists, there are purpose-built mountain bike skills circuits at **Moors Valley Country Park**, Ringwood. Here you will find a network of forest road graded trails, as well as blue graded single track. A cycle map is available from the visitor centre on-site.

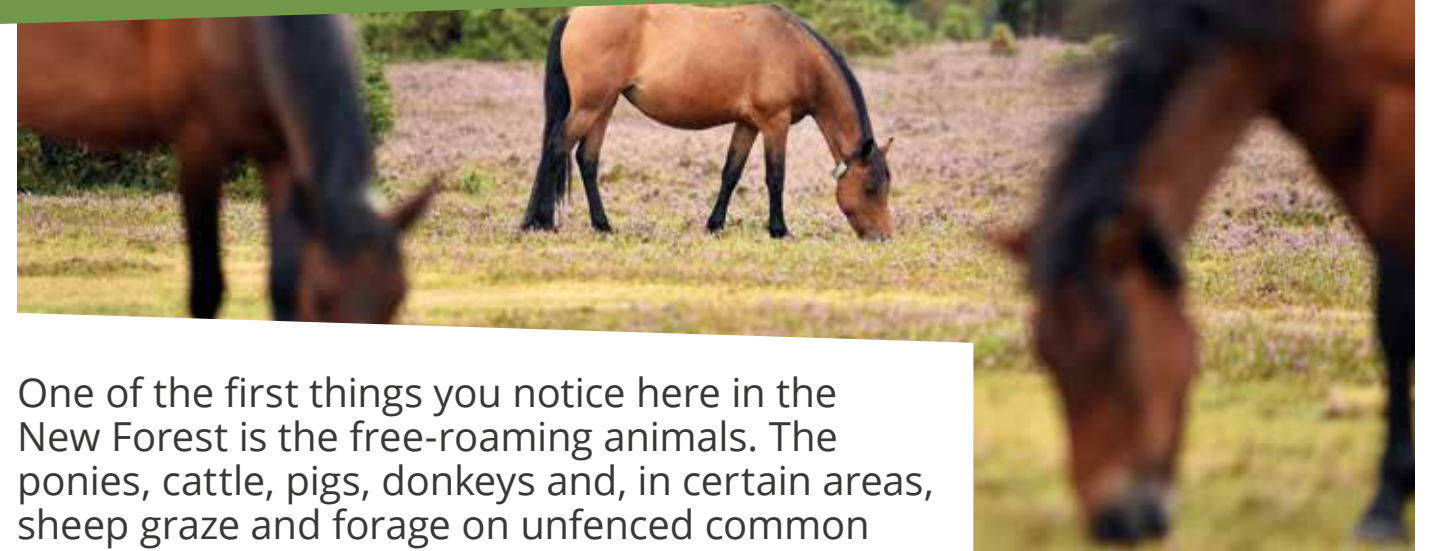
## Cycle code and map

Grab a cycle trail map before heading out on your adventure. It shows both off-road and road-based cycle networks across the New Forest, plus details of bike hire outlets.

Available to pick up at outlets across the New Forest National Park, including local information points.



## Forest rights



One of the first things you notice here in the New Forest is the free-roaming animals. The ponies, cattle, pigs, donkeys and, in certain areas, sheep graze and forage on unfenced common land and are owned by local families using their commoning rights.

The members of these families are called 'commoners' – ordinary people with an extraordinary commitment to this special place. They have commoning rights from land they own, rent or share that allows them to graze their animals on the Open Forest.

All-year round Commoners have to tend to their livestock, so you might see them, with trailers, rounding up their ponies, or checking on their cows. It's all part of the New Forest's long history as a working forest.



Horse riders have always enjoyed open access in the New Forest, which has lots of suitable tracks. When leaving Forestry England land, remember to use bridleways. On private land riders must keep to the Public Rights of Way. These are shown on the Ordnance Survey maps and are usually indicated by fingerposts and/or blue arrows or dots.



Sadly many ponies and other livestock are killed or injured on the roads of the New Forest each year. Every animal killed is a great loss to the Forest, and to its owner, so if you enjoy seeing the animals in the National Park then please help us protect them through some simple actions:

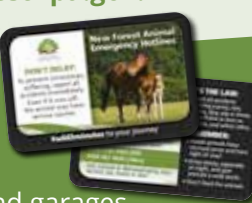
**1. Please #keepyourdistance** from the animals. However tame they may appear they are unpredictable, and can bite and kick. Take particular care around ponies and cattle with young, especially if you have a dog with you.

**2. Please don't feed the animals.** It is vital that they graze naturally, both for their own survival all year round and for the benefits grazing brings to the landscape.

**3. Please don't leave water out** for the animals at any time of the year. There is always natural water available, and it is important for the Forest that the grazing shifts naturally according to the weather.

**4. Please help reduce animal accidents** by driving with extra care, particularly in poor visibility. Just **#add3minutes** to your journey across the New Forest to keep yourself and the commoners' animals safe [newforestnpa.gov.uk/add3minutes](http://newforestnpa.gov.uk/add3minutes).

**Animal emergency hotline cards** are available from Local Information Points and garages across the Forest. Keep one in your wallet so you know what to do if you are involved in an accident.





# See the best of the Forest

View the New Forest National Park from a different perspective this summer. Experience the best views of the Forest on the open-top New Forest Tour or find out the best places to visit from the friendly Travel Concierge.

## Where to stay?

For more information on where to stay, what to see and do in the New Forest visit: [thenewforest.co.uk](http://thenewforest.co.uk)



## Tips from the Travel Concierge

If you're looking for ideas on how to make the most of your visit to the New Forest National Park then look no further.

The friendly Travel Concierge team, based at Brockenhurst railway station, will welcome you to their pedal-powered mobile unit full of information on car-free experiences and the best places to visit.

Stop by and say hello from **11 July to 13 September**. Find out more at [newforestnpa.gov.uk/travel\\_concierge](http://newforestnpa.gov.uk/travel_concierge)

 @NewForestTravel  
 NewForestTravel



## New Forest Tour

The New Forest Tour gives you the best views of the New Forest National Park and is the perfect excuse to leave your car at home.

The Tour offers unrivalled treetop views of free-roaming ponies, ancient forests and picturesque villages. There are three beautiful routes to choose from: red, green and blue – and you can hop on and off where you like and switch routes – all on the same ticket.

Well-behaved dogs are welcome and you can even bring your bikes (carried free). Listen to audio commentary that brings the history and characters of the New Forest to life. The perks don't stop there, as you can enjoy a free ferry ride from Southampton to Hythe, as well as great discounts at attractions including New Forest Wildlife Park, Ringwood Brewery and Beaulieu National Motor Museum.

The Tour runs hourly seven days a week from **11 July to 13 September** (see map on centre pages for routes).

**Tour information**  
[thenewforesttour.info](http://thenewforesttour.info)

  @NewForestTour  
 NewForestTour

# New Forest Reptile Centre

## 'A date with nature'

**Did you know that amongst trees and heathland here in the New Forest there are some very special residents?** The New Forest is home to many reptiles and amphibians and if you want to see them up-close you should visit the Reptile Centre, near Lyndhurst.

As you look around the habitats, or 'pods' as we call them, see if you can spot the elusive smooth snake, adder, or the bright colours of the male sand lizard.

There is also a self-guided discovery trail, which starts at the Reptile Centre. This route is easy to walk and takes you in a loop back to the centre. Download the trail map that shows you the best places to stop along the way and look at wildlife as you walk. For dates and opening times visit: [forestryengland.uk/new-forest-reptile-centre](http://forestryengland.uk/new-forest-reptile-centre)



## The sign of true local produce

Supporting producers, growers, and retailers who proudly use locally-sourced goods.

Look out for the New Forest Marque as you shop and eat in the National Park. Anything with the distinctive logo is guaranteed to have been grown, reared, brewed, produced or processed here in the New Forest.

The Marque has around 160 members, representing many areas of New Forest business, including food and drink; hospitality and retail; craft; art; trees and education.

The growing number of people choosing New Forest Marque produce reflects the many benefits of buying local, seasonal and sustainable goods.

It can help reduce waste, support communities and boost the local economy. As the time from field to fork is shorter, our plates are filled with tastier, fresher, more nutritious food.

The Marque also helps preserve traditional farming practices, rural skills and traditions which for centuries have shaped the distinctive Forest landscape and ecosystem.

[newforestmarque.co.uk](http://newforestmarque.co.uk)  
  @NewForestMarque  
 new-forest-marque

 **lovethetheforest**  
securing the future of the new forest

By donating to the New Forest Trust, you're supporting conservation, education and commoning projects to help secure the future of the New Forest.

You can do this by choosing restaurants and hotels which support the charity; through local donation boxes; or by donating online at: [newforesttrust.org.uk/donate](http://newforesttrust.org.uk/donate)





# Discover the New Forest

## Moors Valley Country Park and Forest is close-by

Explore waymarked footpaths and cycle routes, hire a bike or bring your own. For a more leisurely journey take a trip on the narrow-gauge steam train. Children will love the adventure play areas and the 'Play Trail' with its huge wooden play structures.

If you'd rather live life more adventurously why not try Go Ape's new Nets Adventures at Moors Valley? It's a wonderworld of treetop nets, trampolines and netted tunnels. With Treetop Challenge,

Treetop Adventure+ and Forest Segway all thrill-seeking, family entertainment boxes are firmly ticked. And, when you're feeling hungry after all of that, you can enjoy delicious food in Seasons restaurant.

Moors Valley is open all year round, with a full programme of events for adults and children. Disabled access and facilities are provided including wheelchair and mobility scooter hire.

For more info visit [moors-valley.co.uk](http://moors-valley.co.uk) follow us on @MoorsValley

## The Gruffalo

Discover our beautifully carved wooden Gruffalo sculptures, one for each lovable character from the popular children's story and see the Gruffalo brought to life in the Forest through a new augmented reality app.

©1999 & TM Julia Donaldson/ Axel Scheffler. Licensed by Magic Light Pictures Ltd

## Finding out more...

**Lepe Country Park**  
[hants.gov.uk/lepe](http://hants.gov.uk/lepe)  
**New Forest Heritage Centre, Lyndhurst**  
[newforestheritage.org.uk](http://newforestheritage.org.uk)  
**The National Park Mobile Information Unit, various locations**  
[newforestnpa.gov.uk/visiting](http://newforestnpa.gov.uk/visiting)  
**New Forest Reptile Centre, Lyndhurst**  
[forestryengland.uk/new-forest-reptile-centre](http://forestryengland.uk/new-forest-reptile-centre)  
**Bolderwood Information Unit**  
[forestryengland.uk/bolderwood](http://forestryengland.uk/bolderwood)

**St Barbe Museum and Art Gallery, Lymington**  
[stbarbe-museum.org.uk](http://stbarbe-museum.org.uk)  
**Ringwood Gateway**  
[Ringwood.gov.uk/gateway](http://Ringwood.gov.uk/gateway)  
**Fordingbridge Information Centre**  
[fordingbridge.gov.uk/fordingbridge-information-office](http://fordingbridge.gov.uk/fordingbridge-information-office)



Lepe

For a map of all Forestry England car parks visit:  
[forestryengland.uk/newforest](http://forestryengland.uk/newforest)



The New Forest's free tap water refill service, across the Forest. Download the Refill app, bring your own water bottle, look out for the window stickers and get a free tap water refill.  
[refill.org.uk/newforest](http://refill.org.uk/newforest)



Not to scale: This map is a representation of the New Forest National Park area and is not intended to be used as a sole means of navigation. Please consult relevant Ordnance Survey maps or visitor guides.



# Meet your New Forest Rangers

Both **Forestry England** and the **National Park Authority** employ rangers, who you'll often meet out and about in the New Forest. Here, you'll meet some of the team as they answer some of the most commonly asked questions by visitors to the New Forest.



## Is it true that some birds nest on the ground here?

Yes, that's right and to help these birds survive we ask that from the start of the nesting season through to the end of July people should keep to the main paths when out walking, cycling or horse riding in the Forest and do not venture out onto the open heath. We also ask dog walkers to please keep their dog on the main tracks, and if necessary to use a lead, so that the birds and young chicks are not disturbed.

**Gillie Molland, New Forest National Park Authority Lead Ranger**



## Why can't we feed New Forest ponies?

Everyone loves the ponies, as a horse owner myself I love them, but we all need to act responsibly and keep a safe distance for our own protection, as well as the ponies'. Many people don't understand they are semi-wild and find all the natural food they need to survive from the Forest.

**Amy Howells, Forestry England South Walk Ranger**



## How can I help to protect the New Forest?

Litter can harm the local wildlife and grazing livestock. Large bits of plastic can also break up into microplastics which find their way into our water courses and ultimately our beaches and oceans.

Please carry a spare bag with you so if litter bins are full, or there is not one nearby, you are able to take your rubbish home with you to dispose of responsibly.

**Chris Marshall, New Forest National Park Authority Coastal Ranger**



## Are wildfires a big issue in the Forest?

Disposable barbecues pose a particular fire risk, but we want everyone to be able to enjoy the outdoors. However, dry conditions increase the risk of fires, so people should not have open camp fires or barbecues (unless in a designated area) and extinguish cigarettes properly.

**Martin Rea, Forestry England Seasonal Ranger**

## Forestry England rangers

0300 067 4601/enquiries.southern@forestryengland.uk  
Forestry England, The Queen's House, Lyndhurst, Hampshire, SO43 7NH

## New Forest National Park Authority rangers

01590 646 600/rangers@newforestnpa.gov.uk  
New Forest National Park Authority, Lymington Town Hall, Avenue Road, Lymington SO41 9ZG

# How to enjoy and care for the New Forest



## Ponies, donkeys, cattle, pigs & sheep

For their safety and your own please leave the animals alone – although owned and cared for by local people called commoners, they are unpredictable and best treated as wild. Please don't feed or pet them; there is plenty of natural food and it's best that they don't come to rely on people's attention. They may look friendly but they can bite and kick, especially ponies with foals.



## Dogs

The New Forest is great for dogs but to minimise disturbance to wildlife, livestock and other people, please keep your dogs close by you and visible at all times – if necessary use a lead. Pick up after your dog, especially around car parks, on paths and where people play or picnic.



## Birds

To help ground-nesting birds rear their young safely, keep yourself, dogs and horses on the main tracks from the beginning of March to the end of July.



## Litter

Your food and litter could harm the ponies and donkeys. Please take your litter home if bins are full.



## Barbecues & fires

To reduce the risk of damaging wildfires, campfires are not allowed without the landowner's permission. Disposable BBQs are only allowed at

Bolderwood, Blackwater and Wilverley where stands and water are available. Raised non-disposable BBQs are allowed on the hard-standing areas of car parks, providing water is available. You can hire fixed stand party-sized BBQs from Forestry England (call 0300 068 0400 in advance) and from Hampshire County Council at Lepe Country Park ([hants.gov.uk/lepe](http://hants.gov.uk/lepe) call 023 8089 9108 in advance).



## Cycling

Cycling is allowed only on the waymarked tracks and other designated routes. When approaching people and animals, please call out a warning and pass slowly and wide. Try to leave gaps for overtaking vehicles and never ride more than two abreast. Keep to a safe speed, wear bright colours to be visible and always use lights in the dark.



## Fungi

Please leave fungi for other people to enjoy. Fungi are essential to the New Forest's internationally protected ecosystem. Foray leaders must apply for permission for educational excursions from Forestry England in advance. If you suspect or see commercial picking please call Forestry England on 0300 067 4600.



## Camping

There are 10 campsites in the New Forest run by Camping in the Forest, as well as a number of private sites. Please note that camping in the wild and overnight parking is not allowed in the New Forest.



## Horse riding

Horse riders have open access to the New Forest, but to reduce damage to the ground please use tracks when it's wet.



## Ticks

Check your children, dog and yourself for ticks when you get back – they can lead to Lyme disease.



## Driving

The speed limits on unfenced roads greatly reduce the number of accidents involving animals. Slow down and give walkers, cyclists, horse-riders and animals a wide berth. Be especially careful at night.



## Parking

Please park only in designated car parks, not on a verge or in gateways. Lock your car, taking any valuables with you and leave Forestry England car parks by dusk.



## Unidentified objects

Areas of the New Forest were used to test bombs in World War I and II. Please keep away from objects that might be dangerous and notify the police immediately on 999.



## Working forest

Stay safe by obeying warning signs and keeping away from work sites and vehicles.

[newforestnpa.gov.uk/caringfor](http://newforestnpa.gov.uk/caringfor)



Camping in the Forest is a chance to immerse yourself in nature and enjoy the special qualities of the New Forest.

Choose from 10 different sites across the National Park, offering something for every visitor, including tranquil wooded nooks to flat, green open spaces shaped over centuries by free-roaming animals.

Whether you want to pitch a tent for a short stay in simple surroundings or are bringing a touring caravan for a longer visit, all sites offer an excellent base to explore the local area either by car, bike or on foot.

Book today:  
[campingintheforest.co.uk](http://campingintheforest.co.uk)  
 024 7767 0208



# Take a breath of fresh forest air



Be extra careful...  
 don't take the plunge!



The waterways in the New Forest are a vital resource for the wildlife and it's important that we all respect the Forest while enjoying this special place safely.

Over summer as temperatures begin to rise, it can be really tempting to cool off in the river – but we discourage people from swimming in the river at Balmer Lawn, Brockenhurst, and other natural water sources that may have potential dangers.

# What's on? 2020

New Forest Heritage Centre

Forestry England

New Forest National Park Authority



## Family Discovery Days

Learn about the New Forest and have fun with our family-friendly activities. No need to book, just drop in between 10am and 3pm – different activities each day. (Museum entry is free, donation per craft activity.)

Tues 7 Apr	Thur 9 Apr	Tues 14 Apr	Tues 26 May
Thur 28 May	Tues 4 Aug	Thur 6 Aug	Tues 11 Aug
Thur 13 Aug	Tues 18 Aug	Thur 20 Aug	Tues 25 Aug
Thur 27 Aug	Tues 27 Oct	Thur 29 Oct	

New Forest Heritage Centre, Lyndhurst, SO43 7NY

## March

**Forest Forge Theatre Company and playwright David Lane - '22 Miles of Sea'**

**Fri 14 Feb – Sun 8 Mar, New Forest Heritage Centre, SO43 7NY**

This pop-up exhibition captures the moving, entertaining and often profound tales of people and places from the Waterside stretch of the New Forest.

**John Welsh - Art of the New Forest and South Downs**

**Sat 14 Mar – Sun 31 May, New Forest Heritage Centre, SO43 7NY**

Artist John Welsh works in oils and specialises in landscapes and portraits; his style is expressive, and realist and his inspiration comes from the South Downs and the New Forest.

## Verderers Hall Open day

**Mon 23 Mar, 10am-12pm, Verderers Hall SO43 7NH**

Come and visit the Verderers Hall, for an exclusive opportunity to visit this historic building and learn more about the important role it plays in the New Forest. Parking in main Lyndhurst Town car park only. In partnership with The New Forest Heritage Centre.

Free. Suitable for all. Dogs not suitable on this event. No booking required. Enquiries: 0300 067 4601

## Tree Tours

**Mon 30 Mar, 10am-12pm, Blackwater Arboretum, SU268047**

Take a tour around the arboretum to discover the hidden history and secrets of this unique tree collection.

£2. Suitable for all. Dogs welcome on leads. No booking required. Enquiries: 0300 067 4601



## April

### Discovery Days at Bolderwood

Sat 4 Apr – Sun 19 Apr, 10.30am-3.30pm, Bolderwood, SU242086

Come along and take part in seasonal activities at our Bolderwood Information Unit.

📌 Free. Suitable for all. Dogs welcome on leads. No booking required. Enquiries: 0300 067 4601

### National Parks Fortnight

Sat 6 Apr – Sun 21 Apr, locations across the New Forest

Discover National Parks fortnight - a two-week celebration encouraging people of all ages and interests to go outside, explore and learn more about these special places.

📌 Booking essential. See the website for details: [newforestnpa.gov.uk/events](http://newforestnpa.gov.uk/events).

### Wild Play Day at the Beach

Wed 8 Apr, drop in between 10am-3pm, Hurst Spit, Milford on Sea, SO41 0PY

Discover fun ways to explore, play and get creative in the outdoors. Come and try beach/forest art, seashore/forest scavenging and much more. Wear some weather-appropriate old clothes and don't forget your wellies if you like a splash!

📌 Suggested donation £1/child. Parking charges apply. Suitable for all ages (children must be accompanied by an adult). No booking required. Enquiries 01590 646600.

### Wild Wednesday

Wed 8 Apr, 10.30am-4pm, New Forest Reptile Centre, SU271071

A fun-filled day for all the family, with crafty makes and badge making. A celebration of the wildlife of the New Forest.

📌 Free (suggested donation for parking). Suitable for all. Dogs welcome on leads. No booking required. Enquiries: 0300 067 4601.

### Wild About Ponies

Thur 9 Apr, 1pm-2pm, Bolton's Bench, SU303081  
Come and meet a New Forest Ranger and learn about New Forest Ponies and other livestock which live on the Forest. Come along to a fun, free information session and learn all the answers to your questions about the four-legged icons of the New Forest.

📌 Free. Suitable for all. 1 mile. Dogs welcome on leads. No booking required. Enquiries: 0300 067 4601

### Verderers Hall Open Day

Tues 14 Apr, 10am-12noon, Verderers Hall, SO43 7NH

See Mon 23 March for details

### Wild Wednesday

Wed 15 Apr, 10.30am-4pm, New Forest Reptile Centre, SU271071

See Wed 8 Apr for details

### Wild About Ponies

Thur 16 Apr, 1pm-2pm, Hatchet Pond, SU369017

See Thur 9 Apr for details.

## May

### Tree Tours

Thur 14 May, 10am-12pm, Blackwater Arboretum, SU268047

See Mon 30 Mar for details

### Verderers Hall Open day

Fri 22 May, 2pm-4pm, Verderers Hall, SO43 7NH

See Mon 23 March for details

### Wild Wednesday

Wed 27 May, 10.30am-4pm, New Forest Reptile Centre, SU271071

See Wed 8 Apr for details

### Wild About Ponies – My Haunt

Thur 28 May, 1pm-2pm, Tilery Road, SU308032

See Thur 9 Apr for details

## June

### New Forest Show Centenary Exhibition

Mon 1 Jun – Mon 13 July, New Forest Heritage Centre, SO43 7NY

A fascinating overview of the history and development of the New Forest Show from 1920 through to 2020.

### Fruit Full – art and science project by Francoise Sergy

Sat 6 Jun – Sun 12 Jul, New Forest Heritage Centre, SO43 7NY

Why do we like sugar so much? The art and science project Fruit Full wants to answer this question. The project is a partnership between an artist, nutrition scientists, fruit growers and jam makers. By celebrating fruits and untangling sugar's power and illusions from a truly unusual perspective!

### Funset Safari

Sat 13 Jun, 8pm-10pm, Blackwater car park, SU268047

Experience New Forest wildlife as the sun sets. Listen for Nightjars; keep your eyes peeled for bats and watch out for deer.

📌 £10 per person. 10 years+. 2 miles. Dogs not suitable on this event. Please book online: [forestryengland.uk/newforestevents](http://forestryengland.uk/newforestevents). Enquires: 0300 068 0400

### Verderers Hall Open day

Wed 24 Jun, 10am-12pm, Verderers Hall SO43 7NH

See Mon 23 March for details.

### Sunset Safari

Fri 26 Jun, 8pm-10pm, Blackwater car park, SU268047

Experience New Forest wildlife.

See Sat 13 Jun for details.



## July

### Sunset Safari

Thur 2 Jul, 8pm-10pm, Blackwater car park, SU268047

See Sat 13 Jun for details.

### Sunset Safari

Wed 8 Jul, 8pm-10pm, Blackwater car park, SU268047

See Sat 13 Jun for details.

📌 £10 per person. 10 years+. 2 miles. Dogs not suitable on this event. Please book online: [forestryengland.uk/newforestevents](http://forestryengland.uk/newforestevents). Enquires: 0300 068 0400

### Verderers Hall Open day

Thur 16 Jul, 10am-12pm, Verderers Hall, SO43 7NH

See Mon 23 March for details.

### Wild About Ponies

Thur 23 Jul, 1pm-2pm, Hatchet Pond, SU369017

See Thur 9 Apr for details.

### No Sat Nav required...

Tue 28 Jul, 10am-4pm, New Forest Reptile Centre, SU271071

Join some Forestry England volunteer rangers to learn map reading skills, then put your knowledge to the test on a 1.5 mile walk.

📌 £6 per person. 12 years+. Dogs not suitable on this event. Please book online: [forestryengland.uk/newforestevents](http://forestryengland.uk/newforestevents). Enquires: 0300 068 0400

### Wild Wednesday

Wed 29 Jul, 10.30am-4pm, New Forest Reptile Centre, SU271071

See Wed 8 Apr for details.

### Wild About Ponies

Thur 30 Jul, 1pm-2pm, Bolton's Bench, SU303081

See Thur 9 Apr for details.

## August

### Mapping an adventure

Tue 4 Aug, 10am-4pm, New Forest Reptile Centre, SU271071

Join some Forestry England volunteer rangers to put your map reading skills to the test. Orienteer yourselves along a 3 mile route through the forest.

📌 £6 per person. 12 years+. Dogs not suitable on this event. Please book online: [forestryengland.uk/newforestevents](http://forestryengland.uk/newforestevents). Enquires: 0300 068 0400



### Wild Wednesday

Wed 5 Aug, 10.30am-4pm, New Forest Reptile Centre, SU271071

See Wed 8 Apr for details.

### Wild About Ponies

Thur 6 Aug, 1pm-2pm, Hatchet Pond, SU369017

See Thur 9 Apr for details.

### Discover the New Forest

Thur 6 Aug, 11am-12pm, Bolderwood Information Unit, SU242086

Join a ranger on a short guided walk and discover what makes the New Forest so special. Learn about the history and heritage of the Forest and its extraordinary diversity of wildlife.

📌 Free. Suitable for all. Dogs welcome on leads. Spaces limited. Please book on day at Bolderwood Information Unit.

### Fun in the Forest

Tue 11 Aug, drop in between 10am-3pm. Puttles Bridge to Whitefield Moor car park, Brockenhurst, SO42 7QD

Catch up with the New Forest Rangers for a host of activities such as scavenger hunts, colouring and crafts. Wear old clothes and wellies and be ready for forest fun!

📌 Suggested donation £1/child. Suitable for all (children must be accompanied by an adult). No booking required. Enquiries 01590 646600

### Wild Wednesday

Wed 12 Aug, 10.30am-4pm, New Forest Reptile Centre, SU271071

See Wed 8 Apr for details.

### Discover the New Forest

Thur 13 Aug, 11am-12pm, Bolderwood Information Unit, SU242086

See Thur 6 Aug for details.

### Wild About Ponies

Thur 13 Aug, 1pm-2pm, Whitefield Moor, SU274026

See Thur 9 Apr for details.

### Wild Wednesday

Wed 19 Aug, 10.30am-4pm, New Forest Reptile Centre, SU271071

See Wed 8 Apr for details.

### Discover the New Forest

Thur 20 Aug, 11am-12pm, Bolderwood Information Unit, SU242086

See Thur 6 Aug for details.

### Wild About Ponies-Beaulieu Road Special

Thur 20 Aug, 1pm-2pm, Beaulieu Road Sales Yard, SU350063

A unique opportunity to explore Beaulieu Road sales yard with a New Forest ranger. Come along to a fun, free information session and learn all the answers to your questions about the four-legged icons- New Forest ponies and other livestock which live on the forest.

📌 Free. Suitable for all. 1 mile. Dogs welcome on leads. No booking required. Enquiries: 0300 067 4601

### Verderers Hall Open day

Fri 21 Aug, 10am-12noon, Verderers Hall, SO43 7NH

See Mon 23 March for details

### Fun in the Forest

Tue 25 Aug, drop in between 10am-3pm. Wilverley Inclosure car park, Brockenhurst, BH25 5TZ

Catch up with the New Forest rangers for a host of activities such as scavenger hunts, colouring and crafts. Wear old clothes and be ready for forest fun!  
📌 Suggested donation £1/child. Suitable for all (children must be accompanied by an adult). No booking required. Enquiries 01590 646600

### Wild Wednesday

Wed 26 Aug, 10.30am-4pm, New Forest Reptile Centre, SU271071

See Wed 8 Apr for details.

### Wild About Ponies

Thur 27 Aug, 1pm-2pm, Bolton's Bench, SU303081

See Thur 9 Apr for details.

### Discover the New Forest

Thur 27 Aug, 11am-12pm, Bolderwood Information Unit, SU242086

See Thur 6 Aug for details.



## September

### Wild Wednesday

Wed 2 Sept, 10.30am-4pm, New Forest Reptile Centre, SU271071

See Wed 8 Apr for details.

### Verderers Hall Open day

Mon 28 Sept, 2-4pm, Verderers Hall, SO43 7NH

See Mon 23 March for details.

## October

### Tree Tours

Wed 14 Oct, 10am-12pm, Blackwater Arboretum, SU268047

See Mon 30 Mar for details.

### New Forest Walking Festival

Sat 17 – Sun 1 Nov, locations across the Forest

Join local experts for fascinating New Forest walks at the seventh annual Walking Festival. Includes wildlife walks, history hikes and family strolls and so much more!

📌 Booking is essential. Browse the walks and book from August onwards at: [newforestnpa.gov.uk/walkingfestival](http://newforestnpa.gov.uk/walkingfestival)

### Autumn in the Forest

Sun 18 Oct, 9.30am-2.30pm, Fritham car park, SU230140

Discover the colours, sounds and 'secrets' of the Forest at this special time of year. Join Forestry England Volunteer Rangers on an autumnal walk as part of this year's Walking Festival.

📌 £6 per person. 16 years+. Dogs not suitable on this event. Please book online: [forestryengland.uk/newforestevents](http://forestryengland.uk/newforestevents). Enquires: 0300 068 0400

### Verderers Hall Open day

Tue 20 Oct, 1.30pm-3.30pm, Verderers Hall, SO43 7NH

See Mon 23 March for details.

### Walk with a Commoner

Thur 22 Oct, 10am-1pm, Beaulieu Road, SU350063

Enjoy a guided walk with a Forestry England volunteer ranger who has ponies on the Forest.

📌 £6 per person. 15 years+. 5 miles. Dogs welcome on a lead. Please book online: [forestryengland.uk/newforestevents](http://forestryengland.uk/newforestevents). Enquires: 0300 068 0400

### Autumn Alight

Thur 22 Oct, 9am-11.30am, Bolderwood car park, SU242086

Experience the sights and sounds of autumn on this morning walk. Listen out for deer, experience colours and learn about the importance of fungi and pannage to the New Forest.

📌 £6 per person. 8 years+. Dogs not suitable on this event. Steep slopes along the way. Please book online: [forestryengland.uk/newforestevents](http://forestryengland.uk/newforestevents). Enquires: 0300 068 0400

### Autumn fun

Wed 28 Oct, 10.30-12pm, Blackwater Arboretum, SU268047

Join us in the arboretum to experience the sounds, smells and colours of autumn. Get back to nature with hands on activities to explore.

📌 £5 per child. 3 years+. 1 mile. Dogs not suitable on this event. No booking required. Enquires: 0300 068 0400

### Autumn Wild Play Day in the Forest

Wed 28 Oct, drop in between 10am-3pm, Holmsley Campsite, Forest Road, Burley BH23 8EB

See 8 April for details.





**New Forest wildlife park**

OPEN ALL YEAR  
APART FROM  
DECEMBER 25th & 26th

**BE AMAZED BY WILDLIFE**

Meet our **amazing animals** in the heart of the **New Forest**.

After listening to our many **keeper talks** and watching the **feeding sessions**, why not let off some steam on one of our **two adventure playgrounds**.

Located among the trees and animals you will find a **zip wire**, **climbing ropes**, **swings** and much more.

New Forest Wildlife Park  
Deerleap Lane, Near Ashurst  
Southampton SO40 4UH  
T: 02380 292 408

Follow us!

WWW.NEWFORESTWILDLIFEPARK.CO.UK

**Marwell Zoo**

**WORLD EXCLUSIVE**  
4 APRIL - 2 SEPT

**SUPERSIZED!**  
AN ASTONISHING LARGED THAN LIFE BRICK ADVENTURE

Book online at [marwell.org.uk](http://marwell.org.uk)

Marwell Zoo is owned & operated by Marwell Wildlife, reg. charity no. 275433.

Copyright © Brick Live Group Limited. All rights reserved. Brick Live Group Limited is an independent producer of BRICKLIVE and is not associated with The LEGO Group. LEGO® is a trademark of LEGO Jutis A/S.

Visit the **New Forest Heritage Centre**

Sharing the history of the New Forest

Open daily • Dog friendly  
Free entry • Donations welcome

With our New Forest museum, family fun tree, special exhibition gallery and reference library - there's something for everyone!

[newforestheritage.org.uk](http://newforestheritage.org.uk)

newforestheritage newforestheritage newforestheritage

**ADVENTURE WONDERLAND**  
BOURNEMOUTH

save 10% Book online

Voted Dorset's TOP Family attraction!

**free child!**  
with every 2 full paying entrants

Visit Adventure Wonderland for a full day's family fun and get ONE FREE CHILD ADMISSION with two full payment admissions with this ticket.

Discount applies to standard admission tickets on full park opening dates. Discount applies to tickets purchased at our gate on the day of your visit. No advance ticket option available with this offer. This voucher offer cannot be used in conjunction with any other offer, discount or voucher including already discounted admission tickets and online booking. Admission to be paid by cash or debit/credit card, not Tesco Vouchers. This offer ends on Sunday 1 November 2020. T&Cs apply. [www.adventurewonderland.co.uk](http://www.adventurewonderland.co.uk)

PARK RIDES & ATTRACTIONS  
WILD THING INDOOR PLAY  
NEW SHOW IN THE HAPPYDROME THEATRE  
ALL INCLUSIVE CHARACTER VISITS

Search Adventure Wonderland

**REGENT CENTRE**

cinema • theatre  
live music • concerts  
live satellite broadcasts

OPEN MON - SAT FROM 10AM  
SUNDAYS AT SHOW TIMES

WITH THE  
**CHRISTCHURCH INFORMATION CENTRE**

enjoyEngland  
OFFICIAL PARTNER

HIGH STREET, CHRISTCHURCH, DORSET, BH23 1AS  
01202 499199 | [WWW.REGENTCENTRE.CO.UK](http://WWW.REGENTCENTRE.CO.UK)

**LONGDOWN Activity Farm**

ASHURST NEW FOREST

DON'T MISS OUR BUMPY TRACTOR RIDE  
NO EXTRA CHARGE!

FOR DELICIOUS LOCAL PRODUCE  
VISIT OUR FARM SHOP

**OPEN DAILY**  
15<sup>TH</sup> FEB TO 1<sup>ST</sup> NOV 2020 FROM 10AM

Get hands-on with our full schedule of fun activities, which run throughout the day. Meet friendly farm animals. Plenty of indoor & outdoor play areas. Farm produce shop and gift shop.  
Tel. 023 8029 2837

FOR EVENT DETAILS & MORE CLICK ONTO:  
[WWW.LONGDOWNFARM.CO.UK](http://WWW.LONGDOWNFARM.CO.UK)

IT'S A REAL HANDS-ON EXPERIENCE!

ALL TOGETHER AT  
**Beaulieu**

NEW FOR 2020  
Little Beaulieu  
ADVENTURE PLAY AREA

Marvellous days out are enjoyed together at Beaulieu

NEW FOREST HAMPSHIRE | BOOK NOW AT [BEAULIEU.CO.UK](http://BEAULIEU.CO.UK)

**Exbury Gardens**

Exbury Gardens & Steam Railway is a spectacular 200-acre woodland garden and narrow-gauge steam railway located on the edge of the Beaulieu River.

World-famous for the Rothschild collection of rare trees and shrubs, Exbury is much more than a garden. Boasting an adventure play area, family wildlife trails and ponds teeming with fish. Plus art exhibitions, walking tours and a fantastic restaurant.

023 8089 1203 | [www.exbury.co.uk](http://www.exbury.co.uk) New Forest, SO45 1AZ

Ringwood Brewery  
138 Christchurch Rd  
Ringwood, Hampshire, BH24 3AP

**RINGWOOD BREWERY**

RAZOR BACK  
OLD THUMPER  
BOON DOGGLE  
FORTY NINER  
CIRCUTAN

If you'd like to see the brewery, you can drop in to our brewery store Mon to Sat 9.30am - 5pm or book on to our brewery tour for a look behind the scenes. Tours are available all year round on Saturdays & Sundays, they also run every day during July, August & September. Booking is advisable, simply call our store on 01425 470303 or visit [www.ringwoodbrewery.co.uk](http://www.ringwoodbrewery.co.uk)

**10% OFF**  
BIKE HIRE FROM THE HEART OF THE NEW FOREST

Quote 'Essential 20' when booking\*

COME TO THE FOREST'S FAVOURITE BIKE HIRE CENTRES

<b>CYCLEXPERIENCE</b>	<b>NEW FOREST CYCLING</b>	<b>WOODS CYCLERY</b>
<b>Brockenhurst</b>	<b>Burley</b>	<b>Lyndhurst</b>
<b>01590 624808</b>	<b>01425 403584</b>	<b>02380 282028</b>

\* Sorry, not valid on Bank Holidays or School Holidays



# New Forest heathlands are special

Here in the New Forest we're fortunate to have the largest area of lowland heath in western Europe. Our wet bogs that run through areas of heathland are home to many rare and specialised species.

The heathlands owe much to the local geology and tradition of commoners grazing their livestock here. Also, the heathlands support a vital resource of peat-based habitats such as mires and wet heathland that has the capacity to store as much or more carbon as an equivalent area of woodland.

The valley mires are filled with plants such as sundews, bladderworts, butterworts, aromatic bog myrtle with its

fantastic balmy smell and uncommon species like bog orchid, cotton slender grass, pale green sphagnum bog moss and bog sedge.

The grasslands are home to birds with superb camouflage that nest on the ground. You can help these birds, such as curlew and lapwing, by keeping to the main gravel tracks until July. If you're walking your dog here, keep it on the tracks too – if necessary use a lead.

## There's nowhere quite like the New Forest

You'll find a variety of native creatures and plants which have long since disappeared from the rest of England. Discover a large marsh grasshopper, hear the Dartford warbler singing from the tops of gorse bushes, or spot a sand lizard or the even rarer smooth snake – all in one location!

Forestry England's local team take pride in maintaining and restoring this precious habitat. We manage the gorse breaks; control the

bracken on the heathland; remove regrowth and rhododendron, which smother many plants growing underneath. It is only through this ongoing forest management that we will protect the habitat at a landscape level, creating a mosaic of habitats for wildlife while fostering one of the New Forest's key features for the enjoyment of future generations.

Lapwing



Silver-studded blue butterfly



Rare sand lizards



Heath spotted-orchid



Large marsh grasshopper



**The New Forest Essential Guide** is a joint publication with Forestry England and the New Forest National Park Authority.