

## **Partnership for South Hampshire – Statement of Common Ground**

### 1. Introduction

### 2. Background

### 3. Content

a. a short written description and map showing the location and administrative areas covered by the statement, and a brief justification for these area(s);

b. the key strategic matters being addressed by the statement, for example meeting the housing need for the area, air quality etc.;

c. the plan-making authorities responsible for joint working detailed in the statement, and list of any additional signatories (including cross-referencing the matters to which each is a signatory);

d. governance arrangements for the cooperation process, including how the statement will be maintained and kept up to date;

e. if applicable, the housing requirements in any adopted and (if known) emerging strategic policies relevant to housing within the area covered by the statement;

f. distribution of needs in the area as agreed through the plan-making process, or the process for agreeing the distribution of need (including unmet need) across the area;

g. a record of where agreements have (or have not) been reached on key strategic matters, including the process for reaching agreements on these; and

h. any additional strategic matters to be addressed by the statement which have not already been addressed, including a brief description how the statement relates to any other statement of common ground covering all or part of the same area.

### 4. Signatories

## 1. Introduction

- 1.1. The Partnership for South Hampshire (PfSH) – formerly the Partnership for Urban South Hampshire (PUSH) – was originally formed in 2003. It is a partnership of district and unitary authorities, together with a county council and national park authority, working together to support the sustainable economic growth of the South Hampshire sub-region. Whilst the membership has altered slightly over the years, the core membership has remained broadly consistent.
- 1.2. The Partnership has a strong track record in collaborative working to achieve common goals in South Hampshire. The Partnership was heavily involved in the production of a sub-regional strategy for development that formed part of the South East Plan. This strategy was tested through public examination and when adopted by the Secretary of State, formed part of the development plan at that time, which subsequently informed the production of local plans.
- 1.3. The ethos of collaborative cross boundary working has continued, and the Partnership has a successful track record in providing effective strategies for sub-regional planning. As well as joint working between member authorities, PfSH works with partner agencies in the sub-region as well as key Government departments to deliver joint strategies and pool resources.
- 1.4. Local planning authorities are being required to resolve cross-boundary strategic planning issues through their local plans. Complying with the ‘Duty to Cooperate’ (National Planning Policy Framework (NPPF) para 17) is a fundamental requirement for local plans to successfully be found sound through public examination.
- 1.5. In 2016 the PfSH authorities produced a framework, namely the [PUSH Spatial Position Statement](#), to guide future local plans and housebuilding and development in the sub-region. However, since then the NPPF has been significantly revised, and a standard method for the assessment of housing needs has been issued by the Government. In line with the aim of addressing the national housing crisis, the Government has made clear that strategic policies within development plans should provide for unmet needs in neighbouring authority areas, unless this would contravene specific national planning policies, or these policies taken as a whole. Significantly boosting the supply of housing has been at the centre of all three versions of the NPPF.
- 1.6. PfSH has agreed that there is a need for its constituent authorities to work together to seek to produce a Statement of Common Ground (SoCG) and to explore the production of an Infrastructure Investment Plan. At its meeting on 31 July 2019, PfSH approved the commissioning of a number of evidence work streams to inform the production of a PfSH Joint Strategy. In October 2019 PfSH agreed a draft framework SoCG. This document has been revised and updated to form this initial Statement of Common Ground. It sets out the

programme of work that will be undertaken and will be updated as the evidence workstreams progress.

## **2. Background**

- 2.1. In 2016 PUSH published a Spatial Position Statement to help inform Local Plans and assist individual Councils in meeting the Duty to Cooperate. It was developed as a non-statutory document to inform long-term decisions about the level and distribution of development across South Hampshire. The Position Statement resulted in all needs being met to 2026 and the majority of needs being met through to 2034, with the rate of delivery for new homes being increased by approximately 34%.
- 2.2. The Position Statement included a number of spatial principles that underpinned its development, a series of key principles that were applied through the evolution of the spatial approach and a suite of policies that form the spatial approach. These include housing distribution; strategic development locations; distribution of additional employment floorspace; strategic employment locations; waterfront sites of sub-regional significance; retailing and town centres; green infrastructure; strategic countryside gaps; environment; encouraging modal shift; highway improvements; social infrastructure; and utilities infrastructure.
- 2.3. Clearly time has moved on since the production of the Spatial Position Statement and there is a need to review and update it. Standardised assessments of housing need (objectively assessed need) indicate a need to significantly increase housing provision, there is a need to extend the period covered by the Position Statement beyond 2034 and in particular, to address cross-boundary environmental issues such as the impact of development on water and air quality and on protected sites of international nature conservation importance. In planning for major development, it is also important to maintain and enhance a coherent pattern of town and countryside, to protect towns and villages with a distinct identity and appropriate countryside gaps.
- 2.4. In December 2018 PUSH agreed that the rationale and justification for a possible Green Belt designation be included as part of any joint work taken forward under the Duty to Cooperate initiative. Potential Green Belt designation should be considered alongside the role for green infrastructure, both to serve recreational needs of residents and provide environmental mitigation and enhancement, especially for likely adverse impacts on the integrity of European Nature Conservation sites. In particular, cross-boundary (e.g. catchment-wide) mitigation measures may need land to be allocated to deal with recreation pressures and water and air quality issues, depending on the results of the Habitat Regulations Assessment and Appropriate Assessment. This could also help meet some of the policy aims around climate change (a number of local authorities have declared climate emergencies) and health and wellbeing.

- 2.5. Government policy has also evolved and some strategic issues to be addressed through planning policies, particularly through the location and form of development, have gained greater priority. Issues such as climate change, health and wellbeing, biodiversity and natural capital and environmental net gain have all increased in prominence within public consciousness. All of these issues will affect the location and design of new development in the future.
- 2.6. National planning policy provided through the latest NPPF, published in February 2019, makes it clear that Local Plans should contain strategic policies that, as a minimum, meet their own needs for housing and other uses, as well as any needs that cannot be met within neighbouring areas (para 11).

2.7. The NPPF (para 20) states that,

*'Strategic policies should set out the overall strategy for the pattern, scale and quality of development, and make sufficient provision for:*

- a) housing, employment, retail, leisure and other commercial development;*
- b) infrastructure for transport, telecommunications, security, waste management, water supply, wastewater, flood risk and coastal change management, and the provision of minerals and energy (including heat);*
- c) community facilities (such as health, education and cultural infrastructure);*  
*and*
- d) conservation and enhancement of the natural, built and historic environment, including landscapes and green infrastructure, and planning measures to address climate change mitigation and adaptation.'*

2.8. Whilst the application of the standard method for assessing local housing need is now established in the NPPF (para 60), the sub-regional need for other forms of development and the opportunities to meet those needs are still to be established. This Statement of Common Ground sets out the workstreams for which PfSH will commission evidence to help lead towards the review of the Spatial Position Statement and the production of a Joint Strategy. The four workstreams are:

- Strategic Development Opportunity Area (SDOA) assessments (including traffic modelling and transport impact assessments for the SDOAs)
- Economic, Employment & Commercial Needs (including logistics) Study
- Joint Strategy Strategic Environmental Assessment (SEA), Sustainability Appraisal (SA), Habitats Regulations Assessment (HRA) and Appropriate Assessment (AA)
- Green Infrastructure Needs and Consideration of Mechanisms on How to Achieve Green Belt Designation.

2.9. The SoCG has been prepared against the headings set out in national planning practice guidance (Paragraph: 011 Reference ID: 61-011-20190315).

2.10. It should be noted that the SoCG is intended to deal with strategic cross-boundary matters at a sub-regional scale and it does not negate or supersede

any existing SoCG either between the PfSH and individual authorities or between individual authorities.

2.11. The Joint Strategy will again be a non-statutory high-level strategic plan which can inform Local Plans and assist the Local Planning Authorities in meeting the Duty to Cooperate.

### **3. Content**

#### **a. a short written description and map showing the location and administrative areas covered by the statement, and a brief justification for these area(s)**

3.1. The PfSH area has changed over the years, although the core membership, including the County Council and unitary authorities, has remained constant. The Partnership for Urban South Hampshire was formed in 2003 and evidence secured to inform preparation of the South East Plan helped to establish it as an appropriate sub-region for the purpose of strategic planning.

3.2. The following local authority areas are fully within the PfSH boundary:

- Eastleigh Borough Council
- Fareham Borough Council
- Gosport Borough Council
- Havant Borough Council
- New Forest District Council
- Portsmouth City Council
- Southampton City Council

3.3. The following local authority areas are partly within the PfSH boundary:

- East Hampshire District Council
- Hampshire County Council
- New Forest National Park Authority<sup>1</sup>
- Test Valley Borough Council<sup>2</sup>
- Winchester City Council

The SoCG will include the whole of the New Forest District Council, Test Valley Borough Council and the New Forest National Park Authority area (within Hampshire).

3.4. PfSH is a mature partnership with a lengthy track record of cooperation and collaboration on strategic planning issues and can work with flexible boundaries

---

<sup>1</sup> The New Forest National Park Authority is not a local authority but is a local planning authority with plan-making responsibilities. A small part of the New Forest National Park is in Wiltshire.

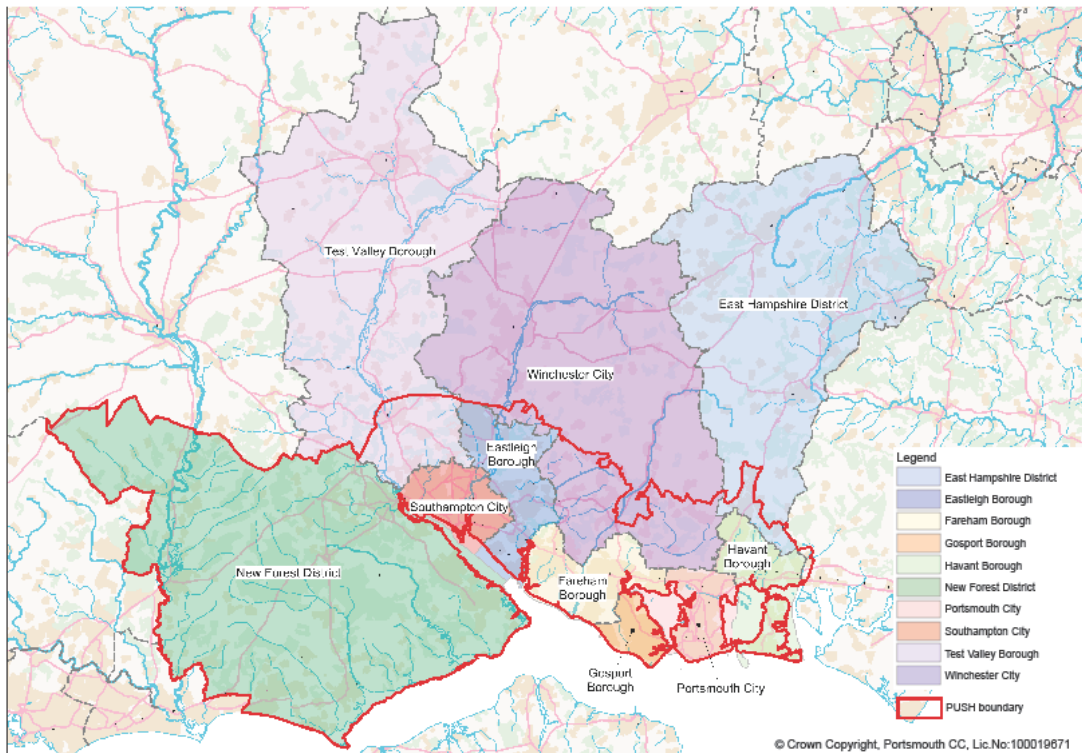
<sup>2</sup> Please note that whilst only part of Test Valley Borough Council area falls within the PfSH boundary, the evidence base studies referenced in this report will cover the whole Borough, unless the Council determines otherwise.

where necessary (e.g. Bird Aware Solent). PfSH has continued to secure evidence and propose solutions to meeting the need for development and investment in infrastructure.

3.5. The evidence base collated over recent years supports the definition of the South Hampshire sub-region for strategic planning purposes, whether it relates to the two closely linked housing markets around Portsmouth and Southampton, the functional economic market area across the whole sub-region or the physical geography of an area located between the South Downs and New Forest National Parks and the coast with islands and peninsulas interspersed with harbours and rivers.

3.6. There is common agreement amongst partner authorities that the PfSH area is an appropriate geography on which to prepare a Joint Strategy to deal with cross-boundary strategic planning matters and support the production of local plans. An extensive evidence base has identified the housing market areas and the need to plan at the South Hampshire scale has previously been considered. Significant information is included within the 2014 GL Hearn [Strategic Housing Market Assessment](#) and previous evidence base work related to the physical environment has demonstrated the synergies for collaborative planning in South Hampshire. It is not intended to revisit the definition of the sub-region as part of the work identified in this SoCG. However, it is acknowledged that there will be some strategic issues that need to be considered in the context of a wider geographical area than that within the PfSH boundary.

3.7. The map below shows the extent of the Partnership for South Hampshire.



**b. the key strategic matters being addressed by the statement, for example meeting the housing need for the area, air quality etc.**

3.8. Regard has been had to advice in the NPPF in defining the strategic matters to be addressed as set out below:

- Housing need
- Employment land
- Infrastructure investment
- Biodiversity net gain, environmental enhancement and avoidance and mitigation of environmental impacts
  - This strategic matter will consider climate change and health and wellbeing and include the need for sub-regional green infrastructure and strategic habitat mitigation and consideration of potential green belt designation.

3.9. The housing needs for each local authority area are calculated using the government's standard method for assessing local housing need and are set out in Table 2 below. The identified objectively assessed housing need is accepted as the correct level to test and to plan for strategically in accordance with government policy, to inform housing targets to be set in local plans. PfSH will address the issue of unmet housing need through the Joint Strategy as set out later in this SoCG.

3.10. The latest need for employment land is less well established. To inform the need for employment land allocations in local plans, PfSH has commissioned an evidence base study: The Economic, Employment and Commercial Needs (including logistics) Study. This Study will provide quantitative evidence of the need for employment land as well as qualitative evidence on specific sectors and their land and locational requirements and commercial realism. When this Study has been completed, this SoCG can be updated to include information on the need for and supply of employment land. Options to address any unmet need will be considered alongside the options to meet housing needs as part of the formulation of the Joint Strategy. Of critical importance to the consideration of these options will be the alignment with and ability to help deliver the strategies that are being prepared by the Solent and Enterprise M3 Local Enterprise Partnerships (LEPs).

3.11. The rate of economic growth that is assumed within the Study will have a significant impact on the resultant land requirements. The Solent LEP's 2050 Strategy and the Enterprise M3 LEP's Local Industrial Strategy were due to be completed in early 2020, although it is understood that they will not include proposed economic growth rates to be planned for. Should the LEPs' strategies be made available during 2020 they should be able to inform the Study. It is recognised that ambitions related to the achievement of enhanced levels of economic development within the sub-region will also have an impact on future housing requirements within the area, and may require the area to accommodate

higher levels of housing growth than indicated by the standard method for assessing local housing need. Work to understand the housing need that may be generated by the expansion of the Port of Southampton forms part of the Study.

- 3.12. Infrastructure investment is a major priority for PfSH, both in terms of identifying the infrastructure needed to deliver development that represents 'good planning' and working together to secure investment in the sub-region. PfSH authorities and the Solent LEP have a good track record in successfully obtaining funding and investment for South Hampshire. The Hampshire and Isle of Wight Planning Officers Group (HIPOG) is commissioning a county-wide study which will focus on infrastructure but will also encompass natural environmental capacity issues. This piece of work will map environmental and infrastructure opportunities and provide a strategic framework and high-level vision to assist in the identification and planning of future infrastructure and growth options that will come out of the PfSH work which will then inform where infrastructure investment is needed. Hampshire County Council has subsequently determined that in order to inform any Hampshire-wide strategy documents, it is necessary to produce a series of documents that examine the state of: The Natural Environment; Economy; Society; and The Built Environment and Infrastructure. These follow on from the findings and recommendations of the Hampshire 2050 Commission of Inquiry, which concluded in September 2019. These documents are expected to be completed this year.
- 3.13. A long standing and continued objective of PfSH is to focus development within the major urban areas, cities and towns first. Our cities and towns form the economic and social heart of South Hampshire. Focussing major development in these locations will enhance economic synergies, the vibrancy of places, support regeneration, social inclusion and the effective use of existing infrastructure, focus people close to jobs, services and public transport (reducing our need to travel more by car), and protect more of our countryside. It is important to recognise that our need for homes and jobs will need new development and infrastructure in a range of locations both within and around our towns and villages, and a balanced investment strategy is needed to deliver development in our cities, towns, villages and new areas of growth.
- 3.14. PfSH has a strong track record in providing strategic environmental mitigation. As part of the formulation of the South East Plan it was identified that new development could lead to increased recreational pressure on the coast with the resultant disturbance of birds. As this could have had a negative impact on a statutorily protected habitat, PfSH led on the development of a strategic scheme of mitigation and then subsequently its implementation. This Solent Recreation Mitigation Strategy has now been branded as 'Bird Aware Solent' and has enabled residential development to continue whilst protecting the natural environment from harm. PfSH continues to carry out a governance role in setting budgets, approving the business plan, monitoring the strategy and determining the funding of infrastructure improvements from developer



contributions. The scope and extent of the Bird Aware Solent Strategy will need to be reviewed as part of the Habitat Regulations Assessment of the new Joint Strategy, as it currently deals with development to 2034, as identified in the Spatial Position Statement (2016).

- 3.15. Similar recreational disturbance issues affect protected species in the international nature conservation sites within the New Forest National Park. Development currently contributes to various mitigation schemes prepared by individual planning authorities, albeit that this only applies to some planning authorities in the west of the sub-region. There is a need for a co-ordinated and strategic approach to addressing the impact of development on the New Forest arising from growth in part of the PfSH area. A partnership<sup>3</sup> has commissioned a new study of visitors to the New Forest's Natura 2000 sites. This research provides updated information<sup>4</sup> on visitor activity and the evidence base for the preparation of a new co-ordinated approach to addressing recreational pressures on the New Forest through appropriate planning and mitigation measures.
- 3.16. South Hampshire continues to face pressing new challenges over the potential impact of development on the environment. Climate change is a significant global issue affecting new development and impacting on existing settlements and a number of local authorities have declared climate emergencies. There is a need to ensure that development is planned in a way that minimises carbon emissions that cause climate change and that new development, so far as is possible, is not vulnerable to the impacts of climate change. This overarching theme will be of great significance when considering the options for further development in the Joint Strategy and is of particular relevance to the UK's commitment to net zero carbon emissions by 2050. PfSH will ensure through the approach in the Joint Strategy that the policy framework enables the creation of strong and resilient communities able to withstand the effects of climate change.
- 3.17. In addition to the existing prioritisation given to policies and proposals to address climate change, the Coronavirus pandemic has caused many to consider how the economic recovery should be focused on a 'green' recovery. This should ensure that planning for economic growth does not simply assume that it will carry on as before without considering the implications of the pandemic. There is an opportunity to tackle deeply ingrained economic, environmental and social challenges, from climate change and inequality, to the sub-region's physical and mental health. PfSH proposes to lead on developing a 'Greenprint for South Hampshire' that will provide a shared framework to enable authorities to work together to design and implement programmes that achieve economic, environmental and social improvements, building on existing actions across the sub-region to reshape the economy to be in harmony with the world class environment and which helps communities to thrive. Whilst at an early

---

<sup>3</sup> Test Valley Borough Council, New Forest District Council, New Forest National Park Authority, Southampton City Council, Eastleigh Borough Council, Wiltshire Council, Natural England

<sup>4</sup> Reports published to date can be accessed [here](#).

stage, it is likely that there will be spatial implications that will need to be addressed in the new Joint Strategy. As work on the Greenprint develops, additional detail can be included in future iterations of the SoCG.

- 3.18. Emissions from transport (and particularly the private car) are a significant causal factor of climate change and poor air quality locally and are influenced through the location of new development. PfSH has commissioned an [Air Quality Impact Assessment](#) and acknowledges that air quality is a strategic issue that needs continued collaborative working amongst PfSH authorities<sup>5</sup>. The Air Quality Impact Assessment provides a strategic baseline for the purpose of informing planning policies but will need updating in due course as it currently only deals with development planned to 2034 in the Spatial Position Statement (2016).
- 3.19. One of the most significant current risks facing new development relates to the impact of nutrient deposition (nitrates and phosphates) on protected habitats, albeit agricultural sources are the most significant cause. New dwellings add to this issue through an increase in foul wastewater that needs to be treated in sewage treatment works, and in surface water run-off, that drain to the Solent. Whilst this is a serious short-term issue that will likely require immediate measures, longer term arrangements will need to be put in place to ensure that the risk is mitigated, and development can continue. Long term solutions are likely to require significant investment, for example in removing sources of nitrogen deposition unrelated to wastewater treatment (e.g. taking land out of intensive agricultural production) or by providing enhanced treatment at sewage works. PfSH is committed to working with central government agencies to find an efficient, central solution.
- 3.20. PfSH has formed a Water Quality Working Group to coordinate a PfSH-wide response to addressing the medium to long-term strategy (which could build upon an initial pilot scheme). Individual Local Planning Authorities are also progressing their own interim solutions in the short-term. The Group also includes local authorities from beyond the PfSH boundary that need to address this issue. At its meeting in July 2020 the PfSH Joint Committee endorsed:
- The establishment of a dedicated officer resource as a temporary planning officer post to work on the nutrient neutrality issue, and take forward a pilot sub-regional mitigation scheme;
  - Continued investigation into determining a sub-regional mitigation scheme, including working towards a Solent Nutrient Fund; and
  - PfSH's continued work with wider local authority partners beyond PfSH members in addressing the nutrient neutrality issue, including on potential funding.

---

<sup>5</sup> N.b. There is a separate [Air Quality Study](#) for the New Forest to 2036 that also flags up issues including potential impacts on New Forest habitats.

3.21. Whilst ensuring that we plan for the new development we need, it is important for the successful delivery of that development that we do this whilst protecting a coherent pattern of town and countryside. This will ensure the best countryside is protected by ensuring that the setting of towns and villages with distinct identities are protected by appropriate countryside gaps; and that the areas with most productive agricultural land, highest landscape value and greatest recreational or ecological benefit are protected and enhanced. Careful choices will need to be made to ensure that we do plan for and deliver the homes, jobs and infrastructure that we all need whilst protecting and enhancing a coherent pattern of town and countryside which maintains and enhances our quality of life. The workstream on '*Green Infrastructure Needs and Consideration of Mechanisms on how to achieve Green Belt Designation*' will relate to these broader objectives.

**c. the plan-making authorities responsible for joint working detailed in the statement, and list of any additional signatories (including cross-referencing the matters to which each is a signatory)**

3.22. The authorities responsible for the joint working detailed in this SoCG are:

- East Hampshire District Council
- Eastleigh Borough Council
- Fareham Borough Council
- Gosport Borough Council
- Hampshire County Council
- Havant Borough Council
- New Forest District Council
- New Forest National Park Authority
- Portsmouth City Council
- Southampton City Council
- Test Valley Borough Council
- Winchester City Council

3.23. In addition, the joint working will be undertaken in conjunction with:

- Enterprise M3 LEP
- Environment Agency
- Hampshire and Isle of Wight Local Nature Partnership
- Highways England
- Homes England
- Natural England
- Solent LEP
- Solent Transport

At this stage it is not anticipated that these organisations would be formal signatories to the SoCG. Other key infrastructure providers will also be involved, for example public transport providers and water companies.

**d. governance arrangements for the cooperation process, including how the statement will be maintained and kept up to date**

- 3.24. PfSH has long established governance arrangements, the full details of which are on the [website](#). The PfSH Joint Committee members are the leaders or cabinet members of the constituent local authorities, supported by chief executives. The Solent LEP, Environment Agency and Homes England are represented on the Committee as observers and Natural England regularly attends the meetings.
- 3.25. Alongside the Joint Committee, an Overview and Scrutiny Committee has been established to complement and, where necessary, make recommendations to the Joint Committee with regards to PfSH business. The Committee comprises a nominated councillor and chief executive from each of the PfSH authorities.
- 3.26. The technical work that will be undertaken to lead to the new Joint Strategy will be overseen by the PfSH Planning Officers Group, a working group of planning officers from each of the partner authorities, including the county council, together with Solent Transport, Natural England and the Environment Agency. PfSH has appointed a consultant Project Manager to coordinate the work on behalf of the Planning Officers Group.
- 3.27. The PfSH Joint Committee will make decisions on strategic planning matters referenced in this SoCG, based on officer recommendations. Each Council will decide how to use its own decision-making mechanisms to consider its own approach to the decisions being made at the PfSH Joint Committee.
- 3.28. This SoCG sets out the process and workstreams that will lead to the review of the Spatial Position Statement and the production of a new Joint Strategy. As the evidence base progresses, it will be appropriate to produce further iterations of the SoCG to reflect the progress made and consider the next steps. A timetable for the anticipated progress of the evidence workstreams and the production of the Joint Strategy is included in Table 1 below. PfSH will remain adaptable to changes in the work programme depending on the results of the studies. Particular regard will be had to the need to support Local Planning Authorities through the need to demonstrate compliance with the Duty to Cooperate and national planning policy at their local plan examinations when considering the timing of future iterations of the SoCG.

Table 1 SoCG timetable

	Q4 2020	Q1 2021	Q2 2021	Q3 2021	Q4 2021	Q1 2022	Q2 2022	Q3 2022
<b>SDOA assessments<sup>6</sup></b>								
<del>Identify SDOAs and scope assessments/transport commission<sup>7</sup></del>								
<del>Procure consultants for SDOA assessments</del>								
Undertake assessments	X	X	X	X				
<del>Procure transport consultants</del>								
Undertake modelling & TIAs <sup>8</sup>	X	X	X	X				
Finalise report				X				
Final report presented to Joint Committee					X			
<b>Economic, employment and commercial needs (including logistic) study</b>								
<del>Identify existing evidence and scope of study</del>								
<del>Procure consultants</del>								
Undertake study	X							
Final report presented to Joint Committee		X						
<b>Green Infrastructure Needs and Consideration of Mechanisms on how to achieve Green Belt Designation</b>								
Establish green infrastructure needs through SDOA assessments (SA/HRA)				X				
Consider options for policy approach scope and procure landscape assessment					X			
Undertake assessments and further consider options						X	X	
Review evidence and determine approach to green belt designation								X

<sup>6</sup> This workstream incorporates Sustainability Appraisal and Habitat Regulations Assessment of the potential Strategic Development Opportunity Areas.

<sup>7</sup> Struck through text indicates that the stage is complete.

<sup>8</sup> Transport Impact Assessments

**e. if applicable, the housing requirements in any adopted and (if known) emerging strategic policies relevant to housing within the area covered by the statement**

3.29. The assessed housing need using the standard method (as required by government policy) for the local authority areas within the PfSH area is set out in the table below<sup>9</sup>:

Table 2 Housing need 2020 – 36

Local Authority	Standard Method 2020 – 2036 (dpa) <sup>10</sup>	Proposed Standard Method 2020 – 2036 (dpa) <sup>11</sup>	Total requirement 2020 – 2036
East Hants (part)	112		1,792
Eastleigh	694	885	11,104
Fareham	514	403	8,224
Gosport	344	309	5,504
Havant	504	963	8,064
New Forest <sup>12</sup>	785	782	12,560
Portsmouth	854	730	13,664
Southampton	1,002	832	16,032
Test Valley (part) <sup>13</sup>	181		2,896
Winchester (part)	235		3,760
Total	5,217		83,600

3.30. There is no centrally produced figure using the government’s standard method, and the above table has been compiled using the best figures available. Figures for districts which only partly fall within PfSH have been apportioned on the basis of the population of those wards which fall within PfSH, other than Test Valley as referenced in the table. All figures have been provided by the local planning authorities and represent their most up to date understanding of the application of the standard method on a consistent basis. It should also be noted

<sup>9</sup> N.b. this relates to the current standard method and not the proposals that were published for consultation in August 2020.

<sup>10</sup> Dwellings per annum.

<sup>11</sup> The figures quoted in this column relate to the government consultation on the revised standard method and have been taken from the analysis published on the [Lichfields website](#) and have not been produced by the PfSH Local Planning Authorities. The ‘split’ districts have not been included as there is no breakdown from whole local authority areas in the Lichfields analysis.

<sup>12</sup> This figure covers the whole of New Forest District, including the part of the New Forest National Park within the district, and is covered by separate local plans prepared by NFDC & NFNPA.

<sup>13</sup> This figure is derived from the TVBC Local Plan. Previous estimates have used population splits based on ward boundaries, although the ward boundaries are not contiguous with the PfSH boundary. The Local Plan splits the housing market in the borough between north and south and assumes a 33% population split in the southern housing market area.

that the figures are updated periodically as new sub-national population projections and affordability ratios are published<sup>14</sup>.

- 3.31. The annual housing need figures in Table 2 can be multiplied by the number of years being planned for to give the total housing requirement. This means that the total housing requirement for the PFSH area between 2020 and 2036 is for some 84,000 homes<sup>15</sup>.
- 3.32. For the period to 2036, there is a significant amount of supply already identified through planning permissions, other urban<sup>16</sup> sites (either windfall or sites identified in strategic housing land availability assessments (SHLAAs<sup>17</sup>)) and allocations in adopted local plans and made neighbourhood plans. Further allocations are currently proposed in the Havant Local Plan Review which the Council expects to submit for examination in the near future. Fareham Borough Council is due to consider its Regulation 19<sup>18</sup> pre-submission Local Plan shortly for approval to consult this autumn before submission for examination, and it is anticipated that this will contain a small number of allocations that will further increase the identified supply.
- 3.33. The New Forest National Park Local Plan 2016 – 2036 was formally adopted on 29 August 2019 and makes provision for an additional 800 dwellings in the National Park over the Plan-period. The New Forest District Local Plan was formally adopted on the 6<sup>th</sup> July 2020 and makes provision for an additional 10,420 dwellings in the part of the District outside of the National Park over the plan period.
- 3.34. Havant and Eastleigh Councils have made significant allocations for development in their emerging local plans and whilst still subject to the outcome of their examinations, these have reached a sufficiently advanced stage in the plan-making process to be considered as commitments from the Council concerned for the purpose of calculating the remaining housing needs to be planned for. In the case of the Eastleigh Local Plan, the Inspector's post hearing advice letter already provides a clear indication of the outcome in terms of housing supply, and Eastleigh's assumed commitments have been adjusted to fully reflect this. This SoCG will continue to be updated to reflect progress in local plans from Regulation 19 consultation through to adoption, with consequential adjustments to the housing supply figures.

---

<sup>14</sup> Government policy requires the use of the 2014-based household projections. Revised affordability ratios are published every two years.

<sup>15</sup> Local plans within the sub-region can be prepared at different times and may not use a 2016 base, particularly as housing need information is updated.

<sup>16</sup> With the exception of the New Forest – see footnote 19 below.

<sup>17</sup> SHLAAs may also be referred to as SLAAs (Strategic Land Availability Assessments), HELAAs (housing and economic land availability assessments) or SHELAAs (strategic housing and economic land availability assessments)

<sup>18</sup> Town and Country Planning (Local Planning) (England) Regulations (2012)



3.35. The housing supply position has been calculated by adding commitments in the form of planning permissions<sup>19</sup>, SHLAA sites<sup>20</sup> and local plan allocations (adopted plans and the emerging Eastleigh and Havant plans) and a windfall estimate (predominantly or wholly urban sites). It is recognised that other local planning authorities are currently identifying additional sites for their areas as part of their emerging local plans and consequently the housing supply figures will increase.

3.36. The identified housing provision for the local planning authority areas within the PfSH area is set out in Table 3 Housing Supply 2020 – 2036 below:

Table 3 Housing Supply 2020 – 36

Local Planning Authority	Total provision 2020 <sup>21</sup> – 36
East Hants (part)	1,169
Eastleigh (including proposed allocations)	8,335
Fareham <sup>22</sup>	6,550
Gosport	2,919
Havant (including proposed allocations)	8,822
New Forest (outside national park)	9,347
New Forest National Park	688
Portsmouth	12,995
Southampton	12,904
Test Valley (part)	3,135
Winchester (part)	5,986
Total	72,850

3.37. As can be seen by comparing the assessed housing need to 2036 with the currently identified supply there is a shortfall of some 11,000 homes that needs to be addressed through the work identified in this SoCG. It is important to stress that this gap is split across the Portsmouth and Southampton housing market areas, the housing gap in the two individual areas will be considerably smaller, although it still needs to be addressed. As work progresses through the evidence base leading to the Joint Strategy, and further progress is made with local plans, it is intended that this table is updated to reflect any changes in provision. To further aid the understanding of the geographical distribution of housing need and current supply, the tables are combined below:

<sup>19</sup> These may include C2 units with the ratio in the Housing Delivery Test Measurement Rule Book applied to give the C3 equivalent.

<sup>20</sup> SHLAA sites are included when they form part of the LPA housing land supply and are within existing settlement boundaries. SHLAA sites for New Forest District outside of settlement boundaries are also included as this source of supply has been tested through the examination of the Part 1 Local Plan and was found sound. Allocations will subsequently be made in their Part 2 Local Plan.

<sup>21</sup> Base date is 1<sup>st</sup> April 2020.

<sup>22</sup> Includes sites with a resolution to grant planning permission.

Table 4 Comparison of housing need and supply 2020 – 2036

Local Authority	Annual Housing Need using Standard Method (dpa)	Total housing need 2020 – 2036	Supply = Commitments, local plan allocations + windfall estimate	Shortfall/ surplus
East Hants (part)	112	1,792	1,169	-623
Eastleigh	694	11,104	8,335	-2,769
Fareham	514	8,224	6,550 <sup>23</sup>	-1,674
Gosport	344	5,504	2,919	-2,585
Havant	504	8,064	8,822	+758
New Forest	785	12,560	10,035	-2,525
Portsmouth	854	13,664	12,995	-669
Southampton	1,002	16,032	12,904	-3,128
Test Valley (part)	181	2,896	3,135	+239
Winchester (part)	235	3,760	5,986	+2,226
Total	5,225	83,600	72,850	-10,750

---

<sup>23</sup> Includes sites with a resolution to grant planning permission.

**f. distribution of needs in the area as agreed through the plan-making process, or the process for agreeing the distribution of need (including unmet need) across the area;**

- 3.38. The majority of needs for housing and employment development up to 2036 are already planned to be met through existing planning permissions, allocations in local plans and neighbourhood plans and small-scale windfall development. However, there remain unmet housing and potentially employment needs which are not currently planned for across local authority areas and a strategic approach is needed to determine the most sustainable locations to accommodate this development within the sub-region.
- 3.39. PfSH has agreed a programme of work to review the Spatial Position Statement, leading to a new Joint Strategy. Four workstreams are set out below:
- Strategic Development Opportunity Area (SDOA) assessments (including traffic modelling and transport impact assessments for the SDOAs)
  - Economic, Employment & Commercial Needs (including logistics) Study
  - Joint Strategy Strategic Environmental Assessment, Sustainability Appraisal, Habitats Regulations Assessment and Appropriate Assessment
  - Green Infrastructure Needs and Consideration of Mechanisms on how to achieve Green Belt Designation.
- 3.40. The Spatial Position Statement (2016) includes Strategic Development Locations. The review of this document and the need to plan where further strategic growth will take place means the identification of further Strategic Development Opportunity Areas (SDOAs) is required. Some of these areas are already being identified through adopted or emerging local plans, e.g. Mayflower Quarter (Southampton) and Southleigh (Havant). These sites are already included in the housing supply figures in Table 3. Whilst these major proposed allocations make significant contributions to accommodating housing needs, further SDOAs will inevitably be needed alongside smaller brownfield and greenfield developments.
- 3.41. The PfSH Planning Officers Group has agreed a process to identify potential SDOAs for further assessment. This involved the identification of all sites above a threshold<sup>24</sup> that have been previously promoted or considered as reasonable alternatives as part of local and strategic planning processes. Consultants have been appointed to identify any further options and potential choices for land to accommodate strategic development and then these potential SDOAs will be subject to analysis and appraisal to establish the most sustainable options and the infrastructure investment needed to deliver them.
- 3.42. The assessment of the SDOAs is following the process below:
- Identification of potential SDOAs
  - Detailed assessments of potential SDOAs including:

---

<sup>24</sup> 20 hectares or 500 dwellings. A number of smaller sites in the same general location could potentially be combined to form a larger strategic site above the threshold.

- constraint mapping and sustainability appraisal
- habitat regulations assessment (including appropriate assessment)
- transport modelling and transport impact assessments (commissioned as a separate study)
- landscape impact / green infrastructure
- strategic infrastructure requirements or opportunities.

3.43. PfSH has commissioned consultants to prepare the assessments and undertake the sustainability appraisal and habitat regulations assessment/appropriate assessment. The transport modelling and transport impact assessments are the subject of a separate commission and will be undertaken in conjunction with Solent Transport and its member organisations. The PfSH Planning Officers Group will then consider the results of the assessments before making recommendations to the Joint Committee as to the SDOAs to include in the Joint Strategy. The sustainability appraisal will be key to making these recommendations.

3.44. Whilst there is clear government policy on the method to be used to assess housing needs, a less prescriptive national policy applies to establishing the need for employment development, although there is the same requirement to meet those needs through plan-making. In order to establish the amount and type of land that needs to be allocated, as well as examining the existing supply, PfSH has commissioned consultants to produce an Economic, Employment and Commercial Needs (including logistics) Study. The results of this study will be considered alongside the SDOA assessments when considering the need for land allocation.

3.45. There are clear benefits in planning for a mix of uses when planning for new communities. There are also opportunities within the existing urban areas for significant redevelopment. The identification of Strategic Development Opportunity Areas will potentially include urban and greenfield sites, expanding upon those identified as Strategic Development Locations in the Spatial Position Statement.

3.46. The need to mitigate potential adverse impacts of new development on the environment is apparent through the evidence base from previous local plans and current issues relating to water and air quality and recreational pressure and potential harm to protected habitats. It is a major priority for the PfSH authorities to ensure that the natural environment is not diminished through new development and where possible, is enhanced. Furthermore, government policy now requires development to provide a net gain for biodiversity. Given the sub-region's location between two National Parks (the South Downs and the New Forest), the 'duty of regard' set out in Section 62(2) of the Environment Act 1995 is also relevant. This duty ensures that any decisions that could affect National Parks must have regard to the two statutory Park purposes.

- 3.47. There are legal requirements for carrying out strategic environmental assessment (incorporated within sustainability appraisal) and habitat regulations assessments (including appropriate assessments) when considering the location of new development. Given issues around recreational disturbance and the potential need to mitigate the impact of nutrient deposition from wastewater outputs and traffic emissions as a result of additional dwellings, there will be a requirement to allocate land to provide sustainable alternative natural greenspace and to reduce nitrate levels in the water environment. Consideration will need to be given to incorporating accessible natural green spaces within SDOAs to ensure that they are accessible to residents and assist with the delivery of appropriate environmental mitigation.
- 3.48. Climate change is an overarching theme that will be at the forefront of the strategy for new development. Matters such as flood risk and policy approaches to resilience can be explored through the sustainability appraisal and SDOA assessments. Any opportunities to reduce potential environmental impact through the location of development will be considered alongside mitigation measures that need to be addressed through planning policy.
- 3.49. The current Strategic Flood Risk Assessment (SFRA) for the PfSH area was completed in 2007, with subsequent interim updates and reviews in 2012 and 2016. PfSH is therefore commissioning a new level one SFRA for the majority of the PfSH region (not East Hampshire, which is in the process of completing an SFRA for its planning area), along with the whole local planning authority areas of Test Valley and Winchester. This is to take account changes in legislation and policy, as well as emerging updates to evidence, modelling and mapping of flood risk. The new SFRA is expected to be completed in 2021.
- 3.50. Dealing with climate change issues can have a long-term beneficial impact on the health and wellbeing of the new communities now being planned. Other issues, such as access to green spaces and opportunities for active travel can also be addressed through the strategy for new development.
- 3.51. Impacts on health caused by poor air quality will be considered through the sustainability appraisal. Development should be located so as to minimise adding to air quality problems and regard should be had to designated Air Quality Management Areas when determining strategic approaches to development.
- 3.52. The strategy will meet development needs, informed by the sustainability appraisal of SDOAs, which will take account of all relevant factors as set out above, of which green infrastructure is one. The '*Green Infrastructure Needs and Consideration of Mechanisms on how to achieve Green Belt Designation*' workstream will commence as the draft results of the SDOA assessments become available. This will enable consideration of potential Green Belt designation to take place in the light of evidence as to development requirements and the most sustainable options for development in South

Hampshire based on all relevant factors. It will also enable the green infrastructure needs of potential SDOAs to form part of the consideration of the justification for Green Belt designation. The policy approach to Green Belt designation, if appropriate, can then be included in the Joint Strategy where, along with other policies, it will be subject to sustainability appraisal. Any proposals for formal Green Belt designation would then need to be pursued through individual local plans.

3.53. PfSH intends that the review of the Spatial Position Statement will lead to a new Joint Strategy. Whilst the initial workstreams have been agreed and this work has commenced, further work remains to be undertaken to establish the full scope for the Joint Strategy. A timetable for the evidence workstreams is included in Table 1 at para 3.27 above. A detailed project plan has been prepared for the workstreams set out in this SoCG. As the evidence base nears completion further consideration will be given to the timing and scope for the production of the Joint Strategy.

3.54. The technical work outlined above will enable the preparation of a PfSH Infrastructure Delivery Plan which will be both evidence based and aligned to an agreed distribution of development to meet the need for homes and jobs. This will provide a strong statement to Government of our strategic infrastructure 'asks', in order to deliver development. This will include for example transport, flood risk management, water and environmental infrastructure.

**g. a record of where agreements have (or have not) been reached on key strategic matters, including the process for reaching agreements on these**

- 3.55. PfSH published a Spatial Position Statement in 2016. This SoCG sets out the process to update and replace that document and is agreed by the PfSH authorities. It is anticipated that the new Joint Strategy will set out the distribution of housing and employment provision between the respective Local Planning Authorities, particularly with respect to providing for unmet needs, amongst other strategic spatial policies (including the sub-regional approach to potential Green Belt designation).
- 3.56. PfSH Joint Committee agreed SoCG with Eastleigh and Havant in July 2019.

**h. any additional strategic matters to be addressed by the statement which have not already been addressed, including a brief description how the statement relates to any other statement of common ground covering all or part of the same area**

3.57. The SoCG sets out a process by which the PfSH authorities will review and update the Spatial Position Statement (2016). It is not intended to replace or supersede any existing SoCG that exists between PfSH and individual local planning authorities or bilateral agreements between local planning authorities.

3.58. There are no other strategic matters to be addressed by the SoCG that have not been referenced earlier in the SoCG.



## **Signatories**

Ken Moon  
East Hampshire District Council

Keith House  
Leader Eastleigh Borough Council

Seán Woodward  
Leader Fareham Borough Council

Stephen Philpott  
Chairman of Economic Development Board Gosport Borough Council

Judith Grajewski  
Executive Member for Public Health Hampshire County Council

Michael Wilson  
Leader Havant Borough Council

Edward Heron  
Deputy Leader New Forest District Council

Chairman New Forest National Park Authority

Gerald Vernon-Jackson  
Leader Portsmouth City Council

Christopher Hammond  
Leader Southampton City Council

Nick Adams-King  
Deputy Leader Test Valley Borough Council

Neil Cutler  
Deputy Leader Winchester City Council