

Annual Internal Audit Report & Opinion

2018 - 19

New Forest National Park Authority

**Southern Internal
Audit Partnership**



Assurance through excellence
and innovation

Contents

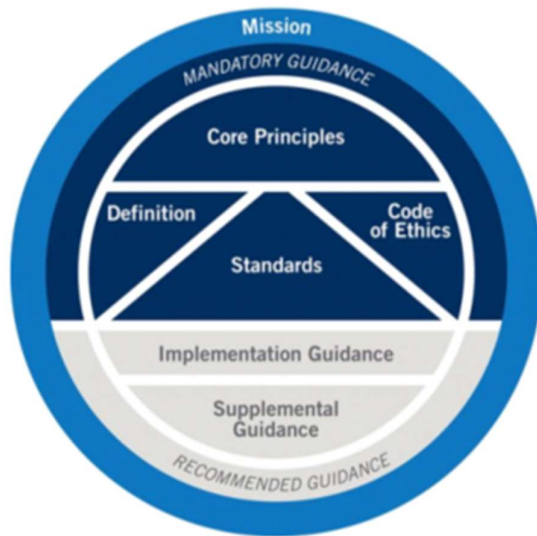
Section	Page
1. Role of Internal Audit	3
2. Internal Audit Approach	4
3. Internal Audit Opinion	5
4. Internal Audit Coverage and Output	6-7
5. Key Observations	8
6. Anti Fraud and Corruption	8
7. Quality Assurance and Improvement	9
8. Disclosure of Non-Conformance	10
9. Quality control	10
10. Internal Audit Performance	11
11. Acknowledgement	11

1. Role of Internal Audit

The requirement for an internal audit function in local government is detailed within the Accounts and Audit (England) Regulations 2015, which states that a relevant body must:

‘Undertake an effective internal audit to evaluate the effectiveness of its risk management, control and governance processes, taking into account public sector internal auditing standards or guidance.’

The standards for ‘proper practices’ are laid down in the Public Sector Internal Audit Standards [the Standards – updated 2017].



The role of internal audit is best summarised through its definition within the Standards, as an:

‘Independent, objective assurance and consulting activity designed to add value and improve an organisation’s operations. It helps an organisation accomplish its objectives by bringing a systematic, disciplined approach to evaluate and improve the effectiveness of risk management, control and governance processes’.

The Authority is responsible for establishing and maintaining appropriate risk management processes, control systems, accounting records and governance arrangements. Internal audit plays a vital role in advising the Authority that these arrangements are in place and operating effectively.

The Authority’s response to internal audit activity should lead to the strengthening of the control environment and, therefore, contribute to the achievement of the organisation’s objectives.

2. Internal Audit Approach

To enable effective outcomes, internal audit provide a combination of assurance and consulting activities. Assurance work involves assessing how well the systems and processes are designed and working, with consulting activities available to help to improve those systems and processes where necessary.

A full range of internal audit services is provided in forming the annual opinion.

The approach to each review is determined by the Chief Internal Auditor and will depend on the:

- level of assurance required;
- significance of the objectives under review to the organisation’s success;
- risks inherent in the achievement of objectives; and
- level of confidence required that controls are well designed and operating as intended.

All formal internal audit assignments will result in a published report. The primary purpose of the audit report is to provide an independent and objective opinion to the Authority on the framework of internal control, risk management and governance in operation and to stimulate improvement.



3. Internal Audit Opinion

The Deputy Head of the Southern Internal Audit Partnership (SIAP) is the Authority’s Chief Internal Auditor and is responsible for the delivery of an annual audit opinion and report that can be used by the Authority to inform its governance statement. The annual opinion concludes on the overall adequacy and effectiveness of the organisation’s framework of governance, risk management and control.

In giving this opinion, assurance can never be absolute and therefore, only reasonable assurance can be provided that there are no major weaknesses in the processes reviewed. In assessing the level of assurance to be given, I have based my opinion on:

- written reports on all internal audit work completed during the course of the year (assurance & consultancy);
- results of any follow up exercises undertaken in respect of previous years’ internal audit work;
- the results of work of other review bodies where appropriate;
- the extent of resources available to deliver the internal audit work;
- the quality and performance of the internal audit service and the extent of compliance with the Standards; and
- the proportion of New Forest National Park Authority’s audit need that has been covered within the period.

Annual Internal Audit Opinion 2018-19

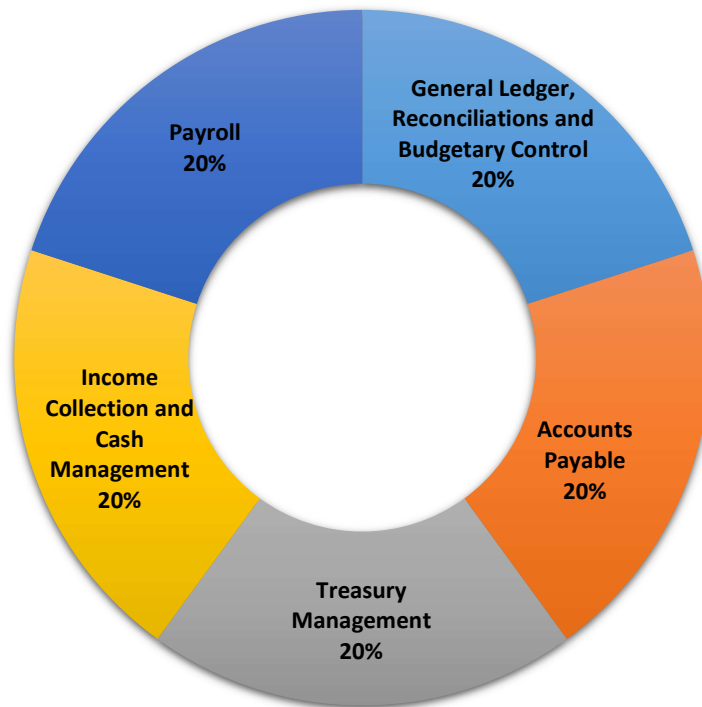
“I am satisfied that sufficient assurance work has been carried out to allow me to form a reasonable conclusion on the adequacy and effectiveness of New Forest National Park Authority’s internal control environment.

In my opinion, New Forest National Park Authority’s framework of governance, risk management and control is ‘Adequate’ and audit testing has demonstrated controls to be working in practice.

Where weaknesses have been identified through internal audit review, we have worked with management to agree appropriate corrective actions and a timescale for improvement.”

4. Internal Audit Coverage and Output

The annual internal audit plan was prepared to take account of the characteristics and relative risks of the Authority’s activities and to support the preparation of the Annual Governance Statement.

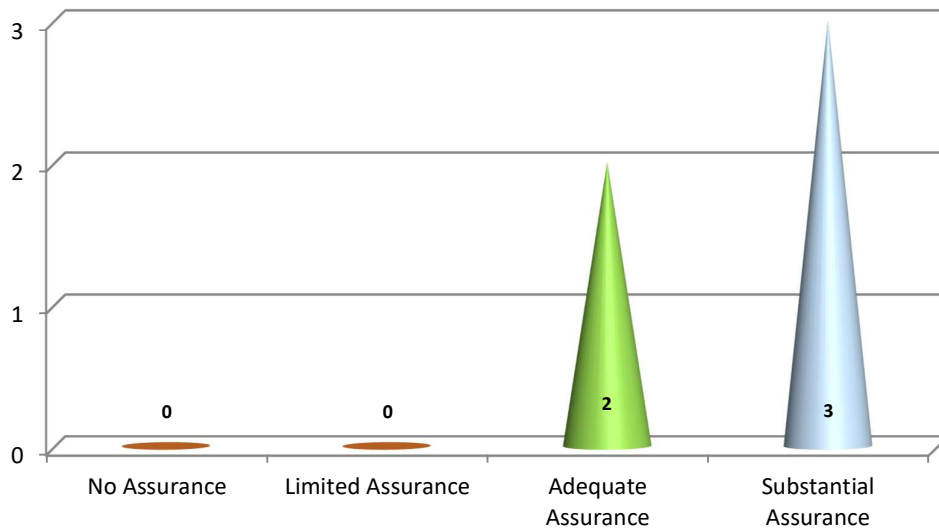


Work has been planned and performed in order to obtain sufficient information and explanation considered necessary to provide evidence to give reasonable assurance that the internal control system is operating effectively.

The 2018-19 Internal audit plan, approved by the Resources, Audit and Performance Committee in March 2018, was informed by internal audits own assessment of risk and materiality, in addition to consultation with management, to ensure it aligned to key risks facing the organisation.

In delivering the internal audit opinion the Southern Internal Audit Partnership have undertaken five assurance reviews during the year ending 31 March 2019.

The opinion assigned to each internal audit review on issue is defined as follows:



Substantial - A sound framework of internal control is in place and operating effectively. No risks to the achievement of system objectives have been identified;

Adequate - Basically a sound framework of internal control with opportunities to improve controls and / or compliance with the control framework. No significant risks to the achievement of system objectives have been identified;

Limited - Significant weakness(es) identified in the framework of internal control and / or compliance with the control framework which could place the achievement of system objectives at risk; or

No - Fundamental weaknesses identified in the framework of internal control or the framework is ineffective or absent with significant risk to the achievement of system objectives

5. Key Observations

There were no 'No Assurance' or 'Limited Assurance' opinions issued during the year.

In general, internal audit work found there to be sound control environments in place across the majority of review areas that were working effectively to support the delivery of corporate objectives. Where weaknesses were identified through internal audit review, we worked with management to agree appropriate corrective actions and timescales for improvement.

All final reports were copied to the Chief Finance Officer as well as the relevant service officers and those who are responsible for any remedial actions arising from the work undertaken. Internal Audit will continue to track and report on the progress with implementing all agreed actions against their target dates through to completion.

6. Anti Fraud and Corruption

There were no Anti Fraud and Corruption Investigations undertaken by Internal Audit during 2018-19.

7. Quality Assurance and Improvement

The Quality Assurance and Improvement Programme (QAIP) is a requirement within ‘the Standards’.

The Standards require the Head of the Southern Internal Audit Partnership to develop and maintain a QAIP to enable the internal audit service to be assessed against the Standards and the Local Government Application Note (LGAN) for conformance.

The QAIP must include both internal and external assessments: internal assessments are both on-going and periodical and external assessment must be undertaken at least once every five years.

In addition to evaluating compliance with the Standards, the QAIP also assesses the efficiency and effectiveness of the internal audit activity, identifying areas for improvement.

An ‘External Quality Assessment’ of the Southern Internal Audit Partnership was undertaken by the Institute of Internal Auditors (IIA) in September 2015.

In considering all sources of evidence the external assessment team concluded:

“It is our view that the Southern Internal Audit Partnership (SIAP) service generally conforms to all of the principles contained within the International Professional Practice Framework (IPPF); the Public Sector Internal Audit Standards (PSIAS); and the Local Government Application Note (LAGN).

There are no instances across these standards where we determined a standard below “generally conforms”, and 4 instances where the standard is assessed as “not applicable” due to the nature of SIAP’s remit.”

In accordance with PSIAS, annual self assessments have been completed since the external inspection concluding that the Southern Internal Audit Partnership continues to comply with all aspects of the IPPF, PSIAS and LGAN.

8. Disclosure of Non-Conformance

In accordance with Public Sector Internal Audit Standard 1312 [External Assessments] which requires ‘an external quality assessment to be conducted at least once every five years by a qualified, independent assessor or assessment team from outside of the organisation’ I can confirm endorsement from the Institute of Internal Auditors that

‘the Southern Internal Audit Partnership conforms to the, Definition of Internal Auditing; the Code of Ethics; and the Standards’

There are no disclosures of Non-Conformance to report.

9. Quality control

Our aim is to provide a service that remains responsive to the needs of the Authority and maintains consistently high standards. In complementing the QAIP this was achieved in 2018-19 through the following internal processes:

- On-going liaison with management to ascertain the risk management, control and governance arrangements, key to corporate success;
- On-going development of a constructive working relationship with the External Auditors to maintain a cooperative assurance approach;
- A tailored audit approach using a defined methodology and assignment control documentation;
- Review and quality control of all internal audit work by professional qualified senior staff members; and
- A self-assessment against the Public Sector Internal Audit Standards.

10. Internal Audit Performance

The following performance indicators are maintained to monitor effective service delivery:

Annual performance indicators			
Aspect of service	Target		2018-19 Actual
Revised plan delivered (to draft report stage)	95%	✓	100 %
Positive customer responses to quality appraisal questionnaire *	95%	✓	99 %
Compliant with the Public Sector Internal Audit Standards	Yes	✓	Yes

*Customer satisfaction has been assessed through response to questionnaires issued to a wide range of stakeholders including Members, senior officers and key contacts.

11. Acknowledgement

I would like to take this opportunity to thank all those staff throughout New Forest National Park Authority with whom we have made contact in the year. Our relationship has been positive and management were responsive to the comments we made both informally and through our formal reporting.

Antony Harvey
Deputy Head of Partnership (SIAP)
May 2019