

Park Life

News from the New Forest National Park Authority



Spring/Summer 2022

FREE!



Sow's about that? Local produce champion Jonathan Stainton-Burrell, of New Forest Marque member Hockey's Farm, celebrating with the farm's newest litter of piglets (See P12)

Meet our
Ambassadors



3

Building
Design Award
winners



6

Cycling
for all



15

Protecting
New Forest
animals



16

Funding success for land managers and farmers in the New Forest

Nature, people and places in the New Forest are benefiting from £174,000 in grants given to farmers and landowners. The three-year Farming in Protected Landscapes programme was launched last year by Defra and is being managed locally by the New Forest National Park Authority. Since opening for applications in July last year, 18 projects have been given funding to restore grasslands and wildflower meadows, plant hedgerows and trees, manage livestock, harvest rainwater and improve soil health and soil carbon.

New Forest farmers and land managers can apply, for projects that either support the natural environment, mitigate the impacts of climate change, provide public access

or support nature-friendly, sustainable farm businesses.

The New Forest National Park Authority's Head of Environment and Rural Economy Paul Walton said: 'The investment in the National Park is very welcome and we're thrilled with the response from farmers and land managers so far. Farming and land management has a crucial role to play in nature recovery and tackling climate change.'

'The range of creative and varied applications to help protect this precious landscape we have received has been really impressive.'

'We are grateful to the members of our Local Assessment Panel who decide which projects should be approved.'

Bringing farming in protected landscapes to life

Read about these fantastic projects fighting the nature and climate emergencies thanks to the Farming In Protected Landscapes fund.

A farm in Fordingbridge is helping to reduce its carbon footprint and provide bigger, better, more joined-up habitats for wildlife.

Solar panels will be installed to supply power to the farm buildings and a new rainwater harvesting system will collect thousands of litres of rainwater to be used for farming and reduce flood risk.

Tree and hedgerow planting will also help to store carbon and, alongside new wildflower areas, will help wildlife flourish. Farmers Daniel and Samantha

Burden said: 'We're aware of the role that farmers can play in helping to tackle climate change and this project will be a large step forward for our farm.'

'It will help to make reductions in the energy and carbon footprint of the farm, allow us to manage the water resource efficiently, to supply all farm buildings with off-grid power and to plant and incorporate new habitats for wildlife within the farming practice.'

'We're making great progress already and are really excited to be making strides towards making the farm more resilient to climate change and enabling wildlife to thrive.'

● Continues on page 14

ADVENTURE STARTS HERE NEW FOREST ACTIVITIES

Adventures for families, couples and groups!

Make the most of your time together in the great outdoors. **Unrivalled** adventures in the New Forest National Park! **FIND US IN BEAULIEU**

BOOK ONLINE

01590 612377

NEWFORESTACTIVITIES.CO.UK

CREATE MEMORIES TO LAST A LIFETIME!



Niki Jenman and William Ziegler

A fundraising scoop!

New Forest Ice Cream is giving a percentage of all scoop tub sales of its vegan salted caramel flavour to the Love the Forest scheme.

Free from dairy, gluten and egg, the vegan alternative ice cream offers a rich, sweet taste of caramel enhanced by a pinch of salt. It can be found in many New Forest pubs and restaurants and also at scoop outlets in villages across the Forest and seaside.

Niki Jenman, director of the Lymington-based family business said: 'We started supporting Love The Forest on our 30th anniversary nine years ago as we wanted to help protect this precious landscape.'

'We've introduced numerous initiatives to help reduce our carbon footprint and to become even more environmentally friendly as well as giving back through Love the Forest fundraising.'

'We hope all New Forest residents and visitors will enjoy this tasty way to show they Love the Forest!'

People can also donate to the scheme online at www.justgiving.com/newforesttrust.

If your business could support the Love the Forest scheme, please get in touch at admin@lovetheforest.org.uk.

Apply for a grant to care for the Forest

The Love the Forest scheme is inviting people to apply for grants of up to £5,000 for projects which help secure the future of the New Forest.

The scheme has recently funded a wide range of initiatives including providing litter-picking kits for the National Park ambassadors; enabling hundreds of volunteers to help with conservation tasks; printing the New Forest Code showing how people can help care for the Forest; and supporting the Hampshire and Isle of Wight Wildlife Trust in removing non-native plants from choking our rivers and streams.

Businesses across the National Park generously help raise the funds from their customers by adding a small donation to restaurant bills, accommodation, products and services.



William Ziegler, Chairman of the New Forest Trust registered charity, which runs the Love the Forest scheme, said: 'The New Forest is one of the best places for wildlife in Europe with many rare species, all underpinned by the ancient tradition of commoning – with the grazing animals helping to shape the landscape.'

'Now we're asking for schools and organisations to come forward with more innovative

projects to help look after this internationally-important area.'

'We would also like to thank our partner businesses and their customers who have raised hundreds of thousands of pounds over the years to ensure the spectacular New Forest is protected for future generations.'

Grants of £50 to £5,000 are available and projects must meet one or more of the New Forest Trust charitable objectives:



- Promoting the conservation, protection and improvement of the New Forest
- Promoting the conservation and protection of the commoning livestock, the deer and other flora and fauna of the New Forest
- Promoting the education and understanding of the public in the commoning of livestock, of fauna and flora and the environment of the New Forest.
- Further guidance on what types of projects are eligible and how to apply is available at www.lovetheforest.org.uk

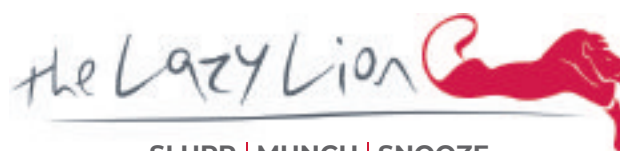
SPG
-Machinery-

We service, repair and supply parts for garden and estate machinery. Visit our workshop Monday to Friday 9am-5pm.

For new machinery from major brands, visit our showroom - mowers, chainsaws, tractors and more for sale.

OPEN 7 DAYS A WEEK
Monday to Saturday 9am-5pm, Sunday 10am - 4pm.

📍 Shallowmead Nurseries, Boldre Lane, SO41 8PA
🌐 www.spg-garden-machinery.co.uk
✉ info@spgm.co.uk
☎ 01590 623893



SLURP | MUNCH | SNOOZE

Travelers' Choice
Tripadvisor

32 High St, Milford on Sea,
SO41 0QD. 01590 641111
thelazylion.co.uk



New Forest Ambassadors Craig Esterhuizen, Mary Earle and Dave Darnell with his dog Flynn

Meet our ambassadors

The New Forest is a wonderfully unique area that needs protecting for future generations. It takes a whole team of people to make sure this ancient landscape is properly maintained and safeguarded – and that includes our New Forest Ambassadors.

The New Forest Ambassador scheme was created in partnership with the NPA, New Forest District Council and parish councils when more local people wanted to get involved in caring for the Forest as the first lockdown was lifted.

The Ambassadors help educate visitors with the New Forest Code, report problems, and join the hundreds of other people who spend their free time keeping the National Park free from litter. The scheme provides a fantastic opportunity to explore the New Forest, connect with

like-minded people and bring a sense of achievement in making a real difference. All of our Ambassadors have their own reasons for joining, some for the mental health benefits, others just looking for exercise, to care for the Forest or get out into the fresh air.

Craig Esterhuizen from New Milton is a chaplain for a local veteran's group who also works with the Men's Activity Network in Hampshire. He highlighted how the Ambassador Scheme helped him in his line of work: 'I work with chaplains with post-traumatic stress and depression and I thought it would be really nice to arrange a clean-up so that we could get them out during lockdown.'

'We can do a big pick up, make them feel good about doing something purposeful plus we can have a nice chat

along the way, in a lovely open environment.'

Mary Earle from Milford-on-Sea became an ambassador because of her 10-year-old son and now goes out with her whole family litter picking at the weekends.

She explained how a school assembly was the inspiration for her family:

'My son was at school where he learned about plogging, which is where you go jogging and you also go litter picking. 'He and all his friends got very excited about that. We managed to get our free litter pickers and now my son and I and my husband and all of his friends go out litter picking. Everyone comments on it, and my son loves it especially if you say thank you.'

You don't need a big reason to get involved, sometimes it can be something as small as walking the dog.

This is exactly how

Brockenhurst local Dave Darnell became an Ambassador. When walking his dog Flynn he noticed litter and wanted to help.

He said: 'Flynn is one of the reasons I started litter picking. My wife and I walk through the Forest and one

day saw all the litter. We saw the Ambassador scheme advertised and thought we might as well do something useful while we take him out for a walk and we do that most days.'

Thank you to the more than 800 ambassadors who have

already signed up, including 170 children - we are always looking for more people to help!

● If you'd like to make a difference and get involved or simply find out more, visit: www.newforestnpa.gov.uk/nfambassadors



New Forest Ambassadors litter picking

Don't miss out on New Forest news. Sign up to our free e-newsletter at www.newforestnpa.gov.uk and click on 'newsletter sign up' on the right hand side of the page

EVERTON NURSERIES - GARDEN CENTRE -

Camellias

COFFEE SHOP & RESTAURANT

An ideal place to stop by for a coffee or a meal

Delicious range of light bites and homemade cakes available all day.

Home cooked lunches available daily between 12 noon and 2.30pm

Come and try one of Allison's fully loaded afternoon teas (booking essential)

If you fancy a treat, why not have Cream Tea with freshly baked scones, clotted cream, jam and a pot of tea.



The New Forest's leading garden centre, offering you the quality and choice from our own 25 acre nursery.

Open every Mon-Sat 9am-5.30pm Sunday 10am-4pm
www.evertonnurseries.co.uk 01590 642155
Everton, on A337, Nr. Lymington, SO41 0JZ



Building a connection with nature

Young people from local schools and youth groups have seen their confidence and wellbeing improved thanks to a range of outdoor activities in the New Forest National Park.

Generation Green is a national programme to help youngsters aged 11 to 25 years build their connection with nature. It's supported by organisations including the Youth Hostels Association, Scouting, Girlguiding, the Outward Bound Trust, English National Parks and Field Studies Council.

Claire Pearce is the Wild Spaces Youth Officer at the New Forest National Park Authority who heads up Generation Green in the New Forest. Since April 2020 she has been helping several groups on a weekly basis, including the Calshot Youth Club which has developed its own space for nature. The club was given a £2,000 grant from the New Forest National Park Authority's Sustainable Communities Fund to create a wildlife-friendly garden, and the young people came forward with their own ideas incorporating vegetable beds, fruit trees and 'mini-beast hotels'.

Students at Bournemouth and Poole College have taken part in a wellbeing walk at Boldenwood, as well as activities with Hampshire and Isle of Wight Wildlife Trust, Lepe Country Park, and bushcraft with the team at Woodlander Hoburne Bashley.



Calshot Youth Club creating a wildlife-friendly garden

The NPA was also proud to partner with Burley YHA to host a residential weekend for pupils from St Joseph's Catholic School in Salisbury, as part of a six-week programme of engagement. Claire said: 'We wanted to offer something different for those who might never otherwise get to go on a residential trip. The 13 students were selected by the staff to build resilience and develop skills to overcome various challenges.'

The students enjoyed geocaching, campfire cooking, riding with the PEDALL inclusive cycling charity, and kayaking with New Forest Activities – all helping with their confidence and social skills, and introducing different ways to connect with nature and spaces around the National Park.

'This is important because of the benefits it secures for the

future, both directly to those who participate and to society generally,' said Claire. 'Other benefits include everything from improved mental wellbeing – which reduces strain on the NHS – to an increased desire to care for the environment.'

'And without fail, students always achieve far more than they think they can. We've had fantastic feedback from the young people, one of whom said they'd grown in confidence and made friends with people they would not normally have spoken to at school.'

● The Generation Green Programme was financed by the Government's Green Recovery Challenge Fund and delivered by the National Lottery Heritage Fund in partnership with Natural England and the Environment Agency.



St Joseph's School in Salisbury enjoying activities on a residential weekend in the New Forest



Calshot Youth Club enjoying work on the wildlife-friendly garden



St Joseph's School in Salisbury on a residential weekend in the New Forest



Join us at the New Forest Show

The New Forest and Hampshire County Show returns to New Park in Brockenhurst this year from 26-28 July.

Come and visit the New Forest National Park Authority stand at the show – we'll be in the Heart of the Forest section with a range of activities for all ages. See you there!

www.newforestshow.co.uk

probably

THE FRIENDLIEST PUBS IN THE NEW FOREST

THE NEW FOREST INN



Picturesque setting in the heart of The New Forest
Emery Down **LYNDHURST** SO43 7DY
thenewforestinn.co.uk
T: 023 8028 4690 • E: info@thenewforestinn.co.uk

THE BOLD FORESTER



Situated on the edge of the beautiful New Forest
Beaulieu Road **THE NEW FOREST** SO40 4UQ
theboldforesternewforest.co.uk
T: 023 8017 5588 • E: info@theboldforesternewforest.co.uk

THE TRUSTY SERVANT



Beautiful location in the heart of Minstead village
Minstead **LYNDHURST** SO43 7FY
thetrustyservant.co.uk
T: 023 8081 2137 • E: info@thetrustyservant.co.uk

THE ROYAL OAK, BEAULIEU



Nestled above Beaulieu, is this cosy, traditional pub
Hilltop **BEAULIEU** SO42 7YR
theroyaloakbeaulieu.com
T: 01590 612228 • E: info@theroyaloakbeaulieu.com

THE MORTIMER ARMS



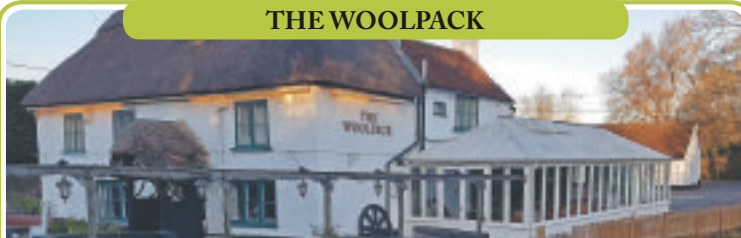
Country Inn located on the edge of the New Forest
Romsey Road **OWER** SO51 6AF
mortimerarms.co.uk
T: 023 8081 4379 • E: info@mortimerarms.co.uk

THE ROYAL OAK, DOWNTON



Situated in a cosy 18th Century Coach House
Christchurch Road **DOWNTON** Lymington SO41 0LA
theroyaloakdownton.com
T: 01590 718104 • E: info@theroyaloakdownton.com

THE WOOLPACK



Beautiful thatched pub in the heart of the lovely village of Sopley
Sopley **CHRISTCHURCH** BH23 7AX
thewoolpacksopley.co.uk
T: 01425 672252 • E: info@thewoolpacksopley.co.uk

All our pubs and restaurants
serve fresh home cooked food
and are open *all day, every*
day for food and drinks and
a warm welcome!!

New Design Guide for the National Park

A new Design Guide for building development in the New Forest National Park was adopted in January 2022 and has a renewed focus on conserving local character, the climate emergency and sustainability.

The New Forest's buildings are an important part of what makes the National Park special, giving the area its distinctive local character.

The Guide is used by property owners and architects looking to submit planning applications. It's also a reference document for town and parish councils and local communities or neighbours when commenting on applications. It's one of the factors considered by the National Park Authority when determining planning applications.

Since the first New Forest National Park Design Guide was adopted in 2011 there have been significant changes in both local and national policy and guidance, leading to the Guide being revised.

It provides guidance on the right materials to use in new development, while a new section on sustainability includes 'green' measures which can be implemented, such as native planting and using locally-sourced materials.

The Guide – which is a supplementary planning document – was developed following a six-week public consultation with organisations such as Historic England and Natural England; town and parish councils; water companies; conservation groups and architects giving feedback as well as local residents.

Gordon Bailey, Chair of the NPA's Planning Committee, said: 'The updated National Park Design Guide supports our local planning policies, and will play a key role in helping us make planning decisions.'

'The Government has called for planning authorities to have local design guidance in place so planning applicants can see at an early stage what the expectations are for the standard and type of design.'

Full details can be found at www.newforestnpa.gov.uk/planning/design-guide/

Cameron's Cottage after renovation
Pictures: Moorhouse Architecture



Celebrating the best of New Forest Design

Congratulations to the winners of the 2022 New Forest National Park Authority's Building Design Awards – which celebrate high-quality design and the best new developments across the National Park.

Best Green Project was awarded to Cameron's Cottage. The once-derelict cottage at RSPB Franchises Lodge in Landford has been sympathetically refurbished and extended for use as a residential retreat for young people.

The design, by Moorhouse Architecture, incorporates an impressive outdoor classroom, locally-sourced timber, solar panels, sustainable heating, and numerous homes for wildlife including bats and birds.

Best Conservation Project went to the restoration of the Ice House at Beaulieu Palace, a structure dating back to 1870 which had fallen into disrepair. Conservation works

by Andrew Waring Associates involved stabilising the Ice House (which was also used as an apple store in the Second World War), reforming the arch between the entrance and the dome, and adding a door and interpretation boards. As a result, the listed structure is no longer on the buildings-at-risk register.

Cameron's Cottage came highly commended in this category.

Best Residential Scheme was Tuckermill House in Boldre, for its impressive modern extension which maximises light and views in a 1930s house.

The scheme, by Forest Architecture, allows the Arts and Crafts character of the original home to be read, while complementing it with a modern timber-clad extension. The finished design has a flat roof overhang reducing upward light pollution.

Best Non-residential Scheme was awarded to The

Old Dairy in Sway. The former agricultural buildings at Cook's Farm were repaired and converted into office space by Hordle-based Tuakana Construction.

The judging panel praised the scheme for keeping the majority of the historic fabric of the existing buildings and for recycling original materials. Hazelwood fencing, sustainable drainage and bat boxes also impressed the panel, who noted the efforts made to enhance the setting of the buildings.

Gordon Bailey, Chair of the New Forest National Park Authority's Planning Committee, and a member of the Awards panel said: 'We were really impressed with the standard of the different designs, which show how high-quality developments can conserve and enhance the New Forest's special character.'

More at www.newforestnpa.gov.uk/BDA2022



Beaulieu Ice House after restoration



The Old Dairy Picture: Tuakana Construction



Tuckermill House Picture: Richard Chivers Architectural Photography

Nominate for the Local List

It's time to celebrate New Forest heritage!

Do you know a local building in the National Park that doesn't quite make national listing, but is deserving of love and protection? Or maybe you have a favourite feature in the landscape - such as a monument, fingerpost, war memorial or village hall that's important enough locally for its character and appearance to be preserved?

It could be a contender to be added to our 'Local List' - which means that its architectural or historic interest is recognised and protected.

Thanks to funding from Historic England, we're expanding our existing Local List. We're inviting nominations for some of the wonderful things that give the New Forest its special qualities and unique character.

Among the new nominations so far are the Sway 1897 Jubilee Oak, Minstead Village Hall and the black post box at Eyeworth.

Nominate at:
www.newforestnpa.gov.uk/local-list



Affordable housing at Burley

The New Forest NPA has bought a site at Burley to build two new affordable homes.

These will be let out to local families in housing need in a scheme similar to those completed in Bransgore, Brockenhurst and Pilley in recent years.

As set out in our Local Plan, providing new affordable housing for local people in identified

housing need is a key policy objective and other sites that will deliver local affordable housing are being progressed at Fawley, Ashurst, Lyndhurst and Sway.

The new site at Burley will also include a local heritage centre.

Local residents hope to form a charitable trust to help take this project forward.

As the local planning authority, the New Forest National Park Authority's role is to ensure that any building works are of a high quality and sympathetic to the nationally-important landscape of the National Park. It deals with around 1,000 planning applications each year – nearly 90% of which are approved.

New Forest

wildlife park

OPEN ALL YEAR

APART FROM

DECEMBER 25TH & 26TH

BE AMAZED BY WILDLIFE

Meet our amazing animals in the heart of the New Forest and let off some steam on one of our two adventure playgrounds.

New Forest Wildlife Park

Deerleap Lane, Nr Ashurst, Southampton, SO40 4UH

T: 02380 292 408

Follow us!

WWW.NEWFORESTWILDLIFEPARK.CO.UK

Grovelly
PETS

Specialists in Pet Nutrition and Healthcare

OH NO ITS TICK AND FLEA SEASON

Spring has sprung on the Forest, and I don't know about you but we keep running into fantastic herds of deer. Whilst they are lovely to look at they are a massive breeding ground for ticks and fleas.

Conventional flea and tick treatments can be full of harsh chemicals and in some very rare cases have been known to cause dangerous reactions in dogs and cats particularly little pups and kittens. So in Grovelly we offer a huge range of natural both prevention and cure tonics, herb, shampoos and treatments for your home. Get ahead of the game with the natural prevention, combined with a good diet and the fleas will not stick around.

Grovelly is working closely with New Forest Dog Owners Group and we are promoting the "pick up your dog poo" on the forest. We are stocking plastic free bio degradable poo bags (you still can't leave them in a tree!) and the renowned Dicky Bag – a sealed pouch that you can attach to you belt, dog walking bag, or lead and store the poo stinky free until you can dispose of in a bin or take it home. Pop into store to see this great range of funky bags, lovingly designed in Devon.

And remember, we are still in the season for Alabama Rot – so make sure you are washing your dogs down with a fresh water wash when coming in from a walk. We have in store a number of water vessels as well as unique ways of washing legs with the Paw Wash. But, if your dog acts in a strange way, licks a lesion or cut on its legs, is lethargic, or appears ill, it's important to get your vet to assist as soon as possible."

01590 633212 | 51-53 Brookley Road, BROCKENHURST SO42 7RB

Opening Times: Monday to Saturday 9am - 5pm

National retailers support Ban th

National retailers have stopped selling disposable BBQs following calls to protect the environment.

Two years ago the New Forest National Park Authority called on retailers in and around the New Forest to remove disposable BBQs from sale and for a continued ban on fires and BBQs in the open countryside of the National Park. It followed a massive wild fire in neighbouring Dorset and rangers having to put out 60 BBQs in the New Forest on one hot summers day when the fire risk was declared high.

Since then, the New Forest has now been declared a complete no BBQ and fire zone and 50 shops and outlets in and around the New Forest have taken disposable BBQs off sale.

In June last year Co-Op led the way nationally, taking the unprecedented decision to remove disposable BBQs from

FIRE FACTS

- The New Forest includes large areas of peat which can ignite very easily and burn for days or weeks, which can also smoulder underground and re-emerge away from the initial source. These fires are incredibly difficult to extinguish and are highly unpredictable.
- It can take up to 48 hours for the ashes/embers from a disposable BBQ to cool down completely and even then, disturbing the ashes can introduce oxygen and reignite smouldering charcoal. Embers can travel for up to a mile dependent on wind speed.
- Please ask your local store to stop selling disposable BBQs and if you're a retailer, please let us know you're supporting our campaign by emailing communications@newforestnpa.gov.uk, and we'll add your name to our website list.

sale in stores within a mile radius of national parks in the bid to stop wildfires.

Now Waitrose and Aldi have decided to nationally ban disposable BBQs in all their stores to reduce fire risk and cut down on waste by taking single-use BBQs off sale. Aldi said its ban on them would

remove 35 tons of single-use waste packaging.

The campaign started in May 2020 when Brockenhurst business Streets Ironmongers pulled disposable BBQs from sale, and Brockenhurst Business Association urged other retailers in the village to join them.

Further support came from many independent stores, and local support was negotiated with national retailers including Waitrose, Marks and Spencer, Tesco and Sainsbury's taking them off sale around the New Forest.

Our campaign also sparked New Forest East MP Dr Julian Lewis to bring the matter up in Parliament. High Peaks MP Robert Langan is now sponsoring a Private Members Bill to prohibit the use of disposable BBQs on open moorland; to give local authorities the power to prohibit the sale of disposable BBQs in their area; and for connected purposes. The second reading is due on 6 May 2022.

Last year Dorset Council and Bournemouth, Christchurch and Poole (BCP) Council also put in measures to control the use of disposable BBQs and have been asking local retailers to withdraw them from sale.

BBQs, camping stoves or anything with a naked flame are no longer permitted in car parks or any areas of the Forest managed by Forestry England, the National Trust, Hampshire and Isle of Wight Wildlife Trust, and Wellow Parish Council.

All BBQ facilities at Forestry England sites have been removed, and prominent 'no BBQ' signs are at Forestry England car parks and information points. More than half the New Forest National Park is internationally-protected because of its rare wildlife, the woods and lowland heathland are of global environmental importance for wildlife and their peaty soils store carbon – helping to reduce climate change. Wildfires would cause immense damage to the ground and would release carbon from the habitats as well as harm the fauna, flora and livestock.

Fire on a New Forest heathland
Picture: Mac Hall



First National Park Artists in Residence programme gets underway

The first New Forest National Park Residency artists have been introduced to their working space at spudWORKS in Sway, in the heart of the New Forest.

The National Park Artists in Residence programme is a creative partnership between the arts and people that work, live in and visit the New Forest, and will showcase that to new audiences.

The New Forest National Park Authority and SPUD introduced this exciting partnership last year and will deliver a three-year programme of six residencies and accompanying exhibitions focused on the New Forest.

The first of the residencies will start in May with Marie Smith from South London, who in her residency will use this opportunity to create a series called 'We belong to nature' which will consist of portrait and landscape photographs providing a nuanced visual representation of how Black, Asian and other Ethnic Minority communities feel

about the New Forest. Marie is a traditional photographer who uses rolls of film and plant-based materials to process her work and hopes to learn more about the ecology of the landscape to use in her processes.

Marie said: 'It's been such a new experience for me to visit the New Forest. I love the stillness and the quietness. It's such a contrast to where I live, I've enjoyed being outside of my comfort zone.'

'I'm really looking forward to getting to know the Forest, spending time in the community, and meeting people. I will be using nature as a space to think about ideas and belonging and how I can link this with climate change. I hope they will all inform the work I'm going to be making in this residency. My continued emphasis will be working with people from Black, Asian and other Ethnic Minority communities in a bid to get those voices heard and start conversations. It is important to see these bodies in the New



National Park Artists in Residence at spudWORKS, Sway: From left, Mark Drury, Director at SPUD; Caroline Rackham, New Forest National Park Authority Member; Beccy McCray, New Forest National Park Residency artist starting October; Alison Ward, trustee at spudWORKS; Marie Smith, New Forest National Park Residency artist starting May; Jim Mitchell – Interpretation and Outreach Manager at New Forest National Park Authority

Forest. I often go out for walks with friends, and we are the only people of colour in these landscapes. I want everyone to have a feeling of belonging in these spaces rather than feeling segregated from nature.'

Beccy McCray, originally from Andover, will take up the second residency in October although she will be developing and learning

about the area throughout the summer. Participation is at the heart of her practice as she seeks to break down boundaries between art, activism, and everyday life in a joyful and positive way.

Beccy said: 'After spending much of my childhood in the Forest, being back here feels like I am coming home. There were many reasons I was inspired to apply

for this residency, one of which was my experiences as a child with my Grandad Jack. They were such happy memories as I feel he started my interest in nature on our summer holidays in the New Forest. The others were the opportunity to be involved with the local community to create something climate focused.

'I am excited to be working

with the local community as my artwork is "socially engaged" which means it's community driven and reliant on their participation. I would really like to connect with the New Forest commoners and the local Romany community to learn how their lives and traditions through the stewardship of the land has progressed though their heritage and observe how it relates to climate change and ecology.'

The arts are integral to our understanding of landscape. The New Forest National Park Authority and spudWORKS are looking forward to working with inspiring and inspired artists to think in different ways about landscapes, how people interact with them, and the challenges that they face.

New Forest National Park Authority Member Caroline Rackham, who has spent much of her career using arts to unite communities, said: 'The goal for the residency programme is to provide closer

e BBQ campaign



Photo by Marie Smith



links between artists and the people and spaces that make up the New Forest National Park beyond the usual things that people might see. The highly protected nature of the National Park means that we are interested in artists who can work sensitively within these restrictions and respond to this positively in their work. This is an incredible opportunity to build a collection of artists whose knowledge and experience can help to positively promote arts throughout the National Park.'

The National Park Artists in

Residence programme will provide an optional menu of activities, participatory events, and conversations with key people, to help artists explore these topics and develop their knowledge and experience of the area.

Alison Ward, a trustee from spudWORKS said: 'Artists will be able to show their work through a month-long exhibition at spudWORKS in Sway as well as a virtual gallery space to help bring the work to a wider audience and encourage collaboration. There may also be an opportunity for artists to show

their work at the New Forest and Hampshire County Show in 2022.'

A new Arts in the New Forest National Park toolkit will be developed to identify and promote locations that artists might be interested in exploring in more detail. Artists selected for year one of the residency programme will be invited to help to develop this resource.

More information on the programme can be found at www.newforestnpa.gov.uk/artistinresidence and www.spud.org.uk/newforestartistinresidence



Rural Affairs Minister Lord Richard Benyon during his visit and an aerial view of Fletchers Water Picture: Big Wave Productions



Minister returns to see successful New Forest wetland restoration project a decade later

Rural Affairs Minister Lord Richard Benyon saw environment projects and met organisations caring for the National Park on a tour of the New Forest.

Lord Benyon visited a stream at Fletcher's Thorns near Brockenhurst which he first saw in 2011 when diggers had carefully recreated its natural meandering course. As part of a programme led by Forestry England to restore wetlands across the New Forest, the meanders were put back into the stream to improve the condition of these internationally-important habitats after the Victorians had straightened the channel to drain the land.

The New Forest is one of the most important areas for freshwater wildlife in Britain. Its freshwater habitats are home to wildlife and plants which have disappeared from other parts of England such as the sundew plant, tadpole shrimp and southern damselfly.

Since 2010 the Verderers of the New Forest Higher Level Stewardship scheme – a partnership between the Verderers, National Park Authority and Forestry England – has restored 20 miles of water courses and improved and protected around 5,000 hectares (more than 7,000 football pitches) of wetland habitats.

The restorations are improving habitats for rare wildlife, protecting streams and mires from further erosion,

helping to manage flood risk and increasing resilience to drought.

During the tour Lord Benyon also visited a commoner's holding near Lyndhurst; met the inclusive cycling charity PEDALL; heard from National Park rangers about the New Forest Code; discussed farming grants and subsidies with commoners and farmers in the Verderers Hall in Lyndhurst; and met with partners and landowners along the Waterside who are working to drive private investment into restoring habitats and climate change initiatives.

Lord Benyon, Minister for Rural Affairs, said: 'I was very pleased to return to the New Forest and see first-hand the positive impact the wetlands restoration has had on freshwater wildlife.

'This wetland is just one example of how we can restore our natural world and let our wildlife recover. We are committed to expanding support for wildlife recovery with ambitious proposals in the Nature Recovery Green Paper and stretching Environment Act targets. I am excited what the future holds for this project and similar initiatives across the country.'

New Forest National Park Authority Chair Prof Gavin Parker said: 'The National Park Authority and our landowners, communities and partners are working together on a range of nature-based solutions to tackle climate change, to

ensure nature recovers and connect more people to the natural world. Lord Benyon's visit was a great opportunity to show how far we have come over the last decade but how much more we all have to do to ensure this landscape not only survives but thrives into the future.'

Official Verderer Lord Willie Manners said: 'We were delighted to welcome Lord Benyon, Parliamentary Under Secretary of State at the Department for Environment, Food and Rural Affairs, on his first visit to the Forest since becoming once again, a Government Minister. On his visit to a commoner's holding he was shown some examples of the extraordinary biodiversity of the Forest. At Fletchers Thorns he was very impressed with the quality of the stream restoration which he had first seen shortly after it was completed.

'Having met a range of people involved in commoning and the management of the Forest including representatives from the Forest Farming Group I am confident that the Minister well understood the importance of commoning to delivering and maintaining the biodiversity of the Forest. I am hopeful too that our discussions about the shape of a future Environmental Land Management Scheme for the Forest will result in a scheme that both fits and benefits the unique needs and characteristics of the Forest.'

A plea to my generation to help protect the New Forest



A keen climate champion, Fletcher lives in Chandler's Ford and uses sustainable transport including cycling, walking, buses and trains. He won the Young Photographer of the Year with his image of a stonechat in the New Forest (left) Also featured are a selection of photos from Fletcher's collection.



14-year-old Fletcher Foot was crowned winner of the Young Photographer of the Year in the Campaign for National Parks Photography Competition 2021. In this moving and honest account, he explains how the New Forest has helped his mental health struggles, and he makes a plea to his generation to understand and unite against climate change to help protect the Forest for the future.

'The New Forest is my safe place, a place where I feel free, unjudged and accepted ... and alive.

You see, the New Forest is magical. She (as I fondly call her) knows when you need her and with no questions asked she opens up her arms and allows you to be at your most vulnerable ... and then with her natural magical beauty she comforts you, heals you. And in return she asks for nothing.

My mental health journey over the past few years has meant

that I have selfishly relied on her to help me ... but on every occasion she has been there. The days that I have needed to walk miles, she allowed me. She gave me the peace I needed, whilst quietly showing me, at every step I made, of the beauty and life that is the heart of the Forest. She guided me through, encouraging and allowing me to breathe and be free – processing the mix of emotions and thoughts I battled with. I will forever be in awe of the beauty that she showed and continues to show me when I walk those miles.

The days that I needed stillness, she offered tranquility – and allowed me to sit for hours whilst watching over me. I have found peace in the stillness, the rawness of the nature and the warmth of her bright sunshine. I have listened for hours to the birds talking, the ponies cantering, the crickets chirping, the secret rustle of the adders ... in the stillness she still reminds me that I am not alone.



Her loyalty is second to none. But really, when I think about it – she's always been there. As a baby she was there, as a toddler she was there ... when I had pre-teen boyish tantrums – she was there. A constant in my childhood, helping create my childhood memories ... the ones that I cherish. The ones where I remember we ran for days, running along the coastline of Lepe and then jumping into the sea ...

LARGEST CYCLE SHOWROOM IN THE NEW FOREST


4.7 ★★★★★ 150+ reviews

 **cyclixexperience**



Up to £1000 RRP Non Electric bikes

Up to £2500 RRP Electric bikes

See our sister company  for specialist bikes

Plenty of parking available. 1 hour FREE

Downside car park, Brockenhurst Train Station, SO42 7TW

01590 624808

hire@cyclix.co.uk

I am Walhampton



Discover the Walhampton difference and visit us to find out about our scholarships in: Academic, Sport, Equine, Music, Art and Drama.



Walhampton

Situated in a beautiful location on the south coast, on the edge of the New Forest, we are an independent co-educational preparatory day, flexi and full-time boarding school for ages 2-13 years.

Open Day 6 May

Contact our School Registrar

Call: 01590 613303 Email: registrar@walhampton.com

WALHAMPTON SCHOOL, LYMINGTON, HAMPSHIRE SO41 5ZG

www.walhampton.com



The ones where we giggled so much it hurt my side as we hid from the dragon in the magical mythical woods at Acres Down ... The ones where we ran down the hill at full blast dodging the cow pats as we went, before collapsing in a huddle at the bottom ... The ones where we imagined we were being chased by giants as we explored the Tall Trees ... The memories I have of the hot summer days sitting

on my grandfather's lap eating ice cream at Bolderwood. She is a constant in my life, and I can imagine many can say the same thing. The days you needed to get away from it all, the days you wanted to create special memories with loved ones, the days you wanted to reconnect. What would we do without her? Now as I walk through the vast beautiful heathland, I notice something different ...

a change that has been slowly creeping up on her. My once beautiful New Forest is ageing ... she's never asked anything of us, yet it would seem that we have taken advantage of her ... we've taken too much. The message is clear, she hasn't got long ... and I'll be honest, I need her. I am of the generation that's taught that climate change is here. Others can dismiss it, choose to ignore it – but at what

cost? The effects are here and ever-present. It is proven that climate change in the UK will bring hotter drier summers, summers with increased heatwaves. With it, milder wetter winters come in hand-in-hand. With the increase of wetter winters, we will see higher sea levels – meaning the loss of land. The reality is, our beautiful Forest, the New Forest, sits on the south coast... with

the current climate change forecast, she is at risk of flooding, coastal erosion, higher sea levels, heathland, grassland & woodland fires. Two words neatly sum it up: DESTRUCTION AND DEVASTATION, we will lose her and all that she has – plants, trees, wildlife ... hope. My heart breaks that my beautiful Forest, who asks for nothing and gives so much, is and will be destroyed if we

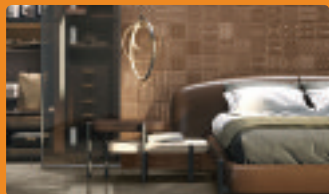
as a generation do not unite. Surely you want your children to have the opportunity to fall in love with the Forest? For the next generation to have a place where they can feel free, and create memories – so that they too want to keep our Forest alive.

As I walk through the heathlands, I hear different songs from the Forest's residents – new birds are making the Forest their home, whilst others are extending their stay. Through these beautiful songs, I try to listen out for our old guests ... but I struggle to hear their striking chords. A simple reminder that our winters are already milder, so many visitors from across the seas decide to stay, distorting natural migration patterns.

The change is already here but our generation can make a difference. We need to listen. We need to understand climate change and we need to take a stand. Our beautiful Forest has never asked of anything of us, but now I'm asking on her behalf.'

THE LYMINGTON TILE CENTRE

Exclusive range of wall & floor tiles, natural stone, vinyl & LVT.
Visit our showroom: 26 Milford Road, Lymington SO41 8DW
Monday - Friday 7.30am - 5pm | Saturday 9am - 4pm



Full design & fitting service available.
Please call **01590 673175** or email
sales@lymingtontiles.co.uk



www.lymingtontiles.co.uk

CRAZY FUN FOR ALL THE FAMILY



01590 689631

info@lymingtongolfcentre.co.uk

No Booking needed.

Also @ Lymington golf centre:
9 hole golf course with practice range
Goodalls strawberry farm open from May 2022.

You can get here using the New Forest tour bus from many locations throughout the forest. Only 5 minutes walk from Lymington pier station and the Isle of Wight ferry. Within easy walking distance from Lymington town station and Lymington town centre

Please see our website for more information: www.lymingtongolfcentre.co.uk



Discover a host of hidden gems

The New Forest boasts a vibrant food and drink scene, brimming with businesses who have the Forest at the heart of their offering.

From cosy cafes to fabulous farm shops, a wide range of places proudly support the local landscape and community by offering true New Forest produce.

It's easy to discover these local gems thanks to the New Forest Marque, a food and produce scheme that champions businesses who produce or provide food, drinks and crafts with clearly defined New Forest provenance.

By choosing produce labelled with the New Forest Marque logo, or visiting Marque members who sell local produce, you can strengthen the local economy, help conserve nature and also reduce your carbon footprint. Plus, as the time from Forest to fork is shorter, your plate is filled with tastier, fresher, more nutritious food.

Many of the Marque's retail and hospitality members welcome visitors throughout the year. Check out the Marque's Local Produce Guide for inspiration, such as:

- Make an afternoon of it at family-run Hockley's Farm, North Gorley, where you can meet farm animals, visit the café, browse bric-a-brac, and buy local produce including pannage pork, from pigs that have roamed freely on the open Forest.



Jonathan Stainton-Burrell with his pigs at Hockley's Farm

- Tuck into delicious Thai food and learn to cook your own authentic dishes with a cooking masterclass at Anissa's Thai Kitchen, a family-run restaurant in Lyndhurst which champions New Forest producers.

- Head to Sunnyfields Farm near Totton for an array of local produce plus popular events such as Sunflower Time, where you can immerse yourself in fields of flowers.

- Enjoy a luxury afternoon tea at Rosie Lea House in the heart of the Forest near Brockenhurst, relaxing as children let off steam with a mud kitchen, giant chalk boards and play area.

Claire Lee, New Forest Marque Manager, said: 'It's easy to support the local community by visiting our Marque members, all of whom have the New



Sutti Se-Upara, who uses a range of New Forest Marque produce at his Lyndhurst restaurant Anissa's Thai Kitchen

Forest at the heart of their product. Not only will you be treated to delicious food and drink, but will be supporting New Forest businesses and ensuring local traditions continue to thrive.'

Download a copy of the Marque's Local Produce Guide and sign up for the newsletter at newforestmarque.co.uk.



Laura Stainton-Burrell of Hockley's Farm with a basket of New Forest Marque produce

The sign of true, local produce

Discover the full range at newforestmarque.co.uk

The New Forest Marque has been awarded to many new businesses recently, taking the total membership to more than 160. New members include:

- Alford's Butchers, Winsor. A farm business with an on-site butchery selling lamb, pork, eggs, fruit and vegetables, preserves and cakes.
- Careys Manor Hotel, Brockenhurst. A spa hotel with heritage at its heart, using local, free-range and organic produce.
- Everton Nurseries, Lymington. An independent, family-owned garden centre producing a wide range of trees, shrubs, conifers, roses and more.
- Minstead Trust. A charity working with people

with learning disabilities and running community venues across the New Forest, including cafes and tearooms.

- Moody Cow Farm Shop, Ringwood. A farm shop specialising in homemade, local and seasonal produce from within a 30-mile radius.
- Naked Jam, Lymington. An award-winning artisan jam and marmalade maker using seasonal fruit to create unique, additive-free recipes.
- New Forest Retreats. Bespoke yoga retreats within the National Park, featuring beach, forest, garden and eco farm breaks.
- NFU Mutual New Forest, Isle of Wight and Bournemouth. A Marque associate member that

offers a range of insurance and financial services, delivered by a friendly team who pride themselves on their local knowledge.

- The Buttery, Brockenhurst. A cosy café serving breakfast, lunch and luxury cream teas.
- The Montagu Arms, Beaulieu. An elegant country house which showcases the rich larder of our Forest, coast and country.
- Welcome Stores Brockenhurst. An award-winning, family-run shop which champions true local produce.
- West Park Firewood, Fordingbridge. Suppliers of local hardwood timber, processed in the New Forest and seasoned naturally in open-sided storage.

Handcrafted produce direct to your door

If you love trying local produce, why not treat yourself to a Taste of the New Forest selection box? These unique boxes feature hand-picked, seasonal products from New Forest Marque members. Contents change each season and all products have been grown, reared, caught, brewed, produced or processed within the New Forest. Find out more at newforestmarque.co.uk/shop.

Hop on the New Forest



New Forest Tour at Beaulieu
Picture: Chris Balcombe

You can enjoy the very best views of the National Park thanks to the return of the popular New Forest Tour. Local bus operators Morebus and Bluestar – in partnership with the New Forest National Park Authority – have extended the season to help support the local economy and reduce congestion and carbon emissions, therefore protecting the National Park's

fragile landscape. From Saturday 25 June to Sunday 18 September, the open-top bus service will provide a spectacular, panoramic perspective of the area's beautiful countryside and coast. Passengers can sit back and enjoy an audio commentary about the area's culture and history, as well as receiving discounts at the National

Motor Museum at Beaulieu, the New Forest Wildlife Park, and local businesses participating in the Go New Forest discount card scheme such as Burley Fudge. The Tour is one of the ways we're addressing the climate and nature emergencies locally. You can leave your car behind and travel for free on either Hythe Ferry or a connecting

bus service and it is easily accessible by train. Multi-day tickets are great value, and you can hop on and off where you like – even across routes. Tickets can be bought online at thenewforesttour.info, through the clickit2ride app, from the Tour driver or registered ticket vendors such as holiday parks and Town Quay ferry in Southampton.



Cycling in the Forest

New Forest Walking and Cycling Festival

Learn more about the wildlife, history and culture of the New Forest during this popular festival which is back for three weeks in the autumn! Experts will be leading the way on dozens of guided events from wildlife walks to historic meanders, forest bathing to fungi spotting, bird watching to ranger rambles.

It's a chance to learn about the special landscape,

habitats and culture of the New Forest, connect to nature and even experience new things. To incorporate the autumn half term, the Festival will feature guided walks suitable for families of all ages.

Many of the events are free. The Festival will run from 15 October to 6 November 2022.

● newforestnpa.gov.uk/walkingfestival



Guided walk at Hurst Spit

Exbury offers the perfect day out

Exbury Gardens & Steam Railway is a spectacular 200-acre woodland garden and narrow-gauge steam railway located on the edge of the Beaulieu River.

World-famous for the Rothschild collection of rare trees and shrubs, Exbury is much more than a garden! Boasting an adventure play area with brand new Log Trail, woodland walks and river views.

For more information or to pre book, visit info@exbury.co.uk or call 023 8089 1203.

www.exbury.co.uk

Exbury Gardens, New Forest, Hampshire, SO45 1AZ
Exbury Gardens is a registered charity: 801349

NOW OPEN

Oakhaven 10

Sunday 20th November 2022

Run 10 miles for Oakhaven Hospice this November and sign up for the Oakhaven 10, a brand new ten-mile trail run, taking in the scenic New Forest paths near Brockenhurst. Registration fees £25 for non-affiliated runners or £23 affiliated. To find out more and register please visit: www.oakhaventen.co.uk

making every moment matter

www.oakhavenhospice.co.uk

Wildlife corridors a win-win for nature

● Continued from page 1

A smallholding in Lymington received funding to create wildlife corridors linking up habitats and allowing wildlife to move cross the landscape far more easily. Over 400 metres of hedgerow have been planted, including over 2,500 native hedgerow plants and 24 native trees.

Commoners Tony and Vanessa Hockley said: 'Our grazing land lost its ancient hedgerow many decades ago, leaving isolated areas of woodland, scrub and ponds. The project has allowed us to create almost half a kilometre of new and mixed native hedgerows reconnecting these important habitats and helping toward net zero.'

'The new planting will also slow the flow of water off this 30-acre area of flat grazing as it makes its way down to Passford Water and Lymington.'

'Over time, this will be a



New hedgerow planted on the Hockleys' farm and volunteers at Pondhead

win-win for nature and for our commoning, creating natural shelter for our New Forest ponies on a site that is very exposed to the prevailing winds and weather, and prone to flash flooding. This has been a brilliant opportunity to make a difference for the future.'

Pondhead Conservation Trust manages Pondhead Enclosure in Lyndhurst under licence from Forestry England. Run entirely by volunteers, the Trust restores the hazel coppice



and ancient track network to improve biodiversity and enhance people's enjoyment of the woodland, which is the size of 125 football pitches.

Trustee and volunteer co-ordinator Derek Tippetts said: 'Our aim is to manage the woodland in an entirely sustainable way, using traditional methods. This woodland is steeped in history having once been at the heart of a royal deer park in the middle of the Forest. Since 2014, our volunteers have

used old maps to restore the historic track network which was mostly overgrown, and they've also helped to restore the largest remaining area of hazel coppice in the Forest.'

'Coppicing is the oldest form of woodland management. It extends the lifecycle of the tree and is beneficial to wildlife by providing a variety of habitats for them. The timber that we cut is used to make charcoal in an environmentally-friendly kiln



Chair-making craft course at Pondhead

which we then sell to the public to fund our work. We look forward to buying a new kiln so that we can continue to be entirely self-funded and sustainable.

'We're thrilled to have received this funding so our work can continue, keeping traditional methods alive and making a difference for people and wildlife in the New Forest.'

THE NEW SURGERY
BROCKENHURST

Steve Orton & Associates
Registered Osteopaths

Osteopathic treatments for all ages. We treat everyday aches and pain including arthritis, sciatica, sports injuries and circulatory problems or just to keep you supple and mobile.

Acupuncture and Podiatry are also available.

Telephone: 01590 623311
www.thenewsurgery.com

The New Surgery, Brookley Road Car Park, Brockenhurst, Hampshire, SO42 7RA

NEW FOREST MOHAIR

Home to your local 'Mo' Goats

Farm to Yarn 'Pop Up' Mohair Shop

• Hand-dyed mohair yarns & fibres for knitting and needlefelting scarves, socks, throws.

See website to book

NEW FOREST MARQUE products produced from our own goat fleeces.

At Linden, Jordans Lane, Pilley SO41 5QW
info@newforestmohair.co.uk
www.newforestmohair.co.uk

OPEN:
May 7th & 8th
June 4th & 5th
July 9th & 10th
Aug daily 20th to 29th
All 11am - 4pm.
Email for other times

ASHURST NEW FOREST

LONGDOWN

Activity Farm

FARMYARD FUN FOR EVERYONE

OPEN DAILY

A farm-tastic day for the whole family to enjoy, with a full schedule of animal activities which run throughout the day.

Farm produce shop and gift shop. Tel. 023 8029 2837
For updates visit longdownfarm.co.uk

BOOK ONLINE TODAY

JOIN THE LONGDOWN LITTLE FARMERS CLUB
See website

Sensible Covid-19 safety measures still observed

Norris & Sons (2011) Ltd

Feed Merchants & Saddlers
'Keeping your animals Fit, Fed & Healthy'

OPEN 7 DAYS A WEEK
9 till 5 Monday to Saturday and 10 till 4 Sundays
DELIVERIES AVAILABLE

AGRICULTURAL MERCHANTS COUNTRY CLOTHING & FOOTWEAR EQUESTRIAN CLOTHING & SHOOTING & ACCESSORIES

KEEPING ALL YOUR ANIMALS FED, FIT AND HEALTHY.
Horses, dogs, cats, birds, farm animals, we cater for them all.
Country clothing section still open, we have a fantastic range of wellies and much more.
You can call, pay and then collect, or make use of our delivery service.

Home Farm • Palace Lane • Beaulieu • SO42 7YG
01590 612215 • www.norrisofbeaulieu.co.uk

Barbour
CHAMEAU 1927
dubarry
ARIAT

naked jam...

naked jam is home to Hampshire artisan producer of award winning jams and conserves that brings together a true understanding of flavour and quality.

Jennifer is an artisan jam maker dedicated to producing conserves of the highest quality where the flavour of the fruit is the most important ingredient.

100% of this sale goes to Ukraine Relief Charity

Unit 3, Silver Street,
Hordle Lymington
SO41 6DG

01590 683381
www.naked-jam.co.uk

LONGDOWN FARM SHOP

Your one-stop shop for delicious locally-sourced food.

Local meat, game, sausages, honey & jam, award-winning cheeses, seasonal fruit and vegetables, mouth-watering cakes, dairy, our own free-range eggs, and so much more.

Visit The Chicken Shack for a specialist range of poultry feed, equipment and bedding. Includes small animal feed, bedding, and straw and hay bales.

Open Daily 10am - 5pm
Longdown Farm Shop, Deerpole Lane, Ashurst
T: 023 8029 2837 ext 5
E: enquiries@longdownfarm.co.uk
www.longdownfarmshop.co.uk



PEDALL groups riding out on a charity relay from Brockenhurst and PEDALL volunteers on a guided ride in Burley



PEDALL inclusive cycling charity provides opportunities for more people to improve their health and wellbeing by getting outside, becoming active and enjoying time in nature.

The charity aims to make cycling available to anyone, no matter what challenges they may face, using a range of specialist cycles including three and four-wheel bikes as well as tandem bikes.

Over the last few months the PEDALL team has been tackling social isolation as well as mental and physical health, and expanded its offer to welcome older people with dementia, as well as young people with mental, physical, and behavioural challenges. It has also been offering 'confidence rides' to help support people in the post COVID-19 recovery.

PEDALL, originally called New Forest Inclusive Cycling, was started in 2011 by the New Forest National Park Authority and New Forest District Council with a grant from

Cycling for all

The warmer weather is a great excuse to get out and explore the New Forest by bike. But if you need a little support to do so, help is at hand...



PEDALL
New Forest Inclusive Cycling

Hampshire County Council's Inspiring You fund.

It operates from a base in Burley, as well as a newly-opened site at Ashurst which means rides are now accessible by train, enabling greater car-free access from Southampton, Portsmouth, Winchester and Bournemouth. All rides are on the designated off-road cycle tracks led by qualified and experienced staff and volunteers, ensuring riders can focus on enjoying the surroundings and making new friends.

Refreshment breaks in the peace and tranquillity of the New Forest complete a wonderful day out, or bikes can be brought to you.

The PEDALL team encourages family rides. These are often multi-generational with grandad or grandma joining the family.

One of the delights of cycling with the PEDALL specialist bikes is they cater for everyone from nine to 90, whatever their additional needs and physical disabilities. Everyone really can cycle together at PEDALL!

The charity is supported by an army of enthusiastic and skilled volunteers and offers work experience and apprentice opportunities to young people with additional needs.

David Challis, a PEDALL volunteer said: 'Being

involved has been great for me. Contributing to other people's wellbeing and feeling I've played a useful part is enormously rewarding. Everyone who takes part in PEDALL takes something good away from it.'

The PEDALL charity is looking for additional supporters to help deliver this popular community resource. There are a range of ways people can help, including:

- Sponsoring one of the 60+ standard and specialised bikes
- Supporting employment of an additional needs apprentice
- Sponsoring a future PEDALL event
- Providing transport to the PEDALL rides

● Volunteering for PEDALL
PEDALL'S Project Manager Donna Neseiyif said: 'It's a total privilege to be part of the PEDALL team and a huge thank you to everyone for all their support and commitment, including our dedicated volunteers, trustees, funders, business sponsors and supporters. And, of course, our fantastic riders who continually inspire us all by achieving far more than they thought they could.'

If you would like to get out cycling and need a little support, or if you can help fund the project, find out more information at www.pedall.org.uk

'Trips are precious'

Colten Care, with resident care homes based around the south coast, have been riding with PEDALL since 2018. Ellie Peters, Colten Care Activities Manager said: 'Our residents love getting outside and trips are very precious to them. The last few years have been really hard for everyone, but none more so than our residents who were unable to go on their beloved trips for over a year. What we like about PEDALL is the relaxed and friendly team who always make us so welcome. 'Cycling often brings back childhood memories for our residents – as does the weather. It's funny how sometimes feeling the rain on their face or the smell of pine trees in the Forest triggers a memory on a ride.'

Protecting the New Forest's rare birds

The New Forest National Park is a Special Protection Area for Birds and an important breeding location for endangered ground-nesting birds such as the lapwing, nightjar, Dartford warbler, snipe and curlew.

They're vulnerable in many parts of the UK due to habitat loss and disturbance by people, so helping them breed successfully in the New Forest is critical to their survival. You can help these rare birds by taking a few simple measures when using the Forest during their nesting

season – between the end of February and the end of July.

Special quiet zones have now been established at critical breeding areas to help reduce the likelihood of birds abandoning nests and exposing chicks to predators.

A small number of car parks nearby are closed: Clayhill, Crockford, Crockford Clump, Hinchelsea, Hinchelsea Moor, Ocknell Pond, Ogdens, Shatterford and Yew Tree Heath. You'll find alternative car parks close by.

Thank you for sticking to the main tracks in these zones (whether on foot, cycling or horseriding) and not venturing onto open, heathland areas where birds will be nesting. People with dogs are asked to keep them on tracks and, where necessary, use leads to keep them under close control. Look out for special signs in key nesting zones. Orange signs indicate you're very close to breeding grounds, while red 'stop' signs mean nesting sites are in the immediate area, and ask the public to take a different route.



A snipe chick Picture: Marcus Ward, Wild New Forest

Helping to protect animals

Together with the iconic New Forest ponies, cattle are a familiar sight roaming the National Park, providing a service by browsing and grazing which helps to shape the landscape we see today.

There are a number of ways we can all protect and respect these animals when enjoying the New Forest, keeping us and them safe and ensuring the area continues to thrive as a living, working Forest:

- It's lovely to see calves out on the open Forest, but if you find one on its own, please do give it a wide berth and don't be tempted to 'help' it. Mothers often hide their calves in

gorse or heather so they can go off to feed. Don't worry, she'll be coming back! And if she thinks her baby is being threatened, she could become aggressive.

- Keep a good distance from any cattle, and move away from them quietly and calmly. They may look tame but they are powerful and can be unpredictable.
- Drive carefully across the Forest – slow down and drive to the conditions of the road. Low sun, oncoming headlights and bad weather can make visibility poor, and darker animals more difficult to see.
- Keep dogs on a lead when near cattle. However, if threatened or chased,

release the dog and get to safety separately.

- Please pick up after your dog. All the free-roaming cattle are owned by 'commoners' – ordinary people with an extraordinary commitment to this special place.

They have commoning rights from land they own, rent or share that allows them to graze their animals on the Open Forest.

This traditional practice of commoning is a vital service in supporting the New Forest's rare habitats which are a world capital for wildlife.

Thank you for helping to protect this special place and its animals.



Follow and share the New Forest code

There are ways everyone can enjoy the New Forest National Park without causing inadvertent harm to the stunning protected habitats and wildlife.

Thank you for following the New Forest code – which focuses on nine simple ways everyone can help care for this unique place, helping to protect the landscape, livestock and wildlife of the New Forest.

It's been put together by the New Forest National Park Authority with partners Forestry

England, Verderers of the New Forest, New Forest Commoners, New Forest District Council and Go New Forest, with support from the National Trust, Hampshire and Isle of Wight Wildlife Trust, Hampshire County Council, and the New Forest Trust.

You can help share the code - through social media, on an email signature or print a poster for your window. Visit www.newforestnpa.gov.uk/NFcode for more info and a digital toolkit.



Luxury in the New Forest

Recently refurbished, the Forest Park is an iconic country hotel located in Brockenhurst village. Its luxurious accommodation offering tranquil nights with either garden or forest views and is the perfect base to explore the New Forest National Park.

The Acorn Room Restaurant serves freshly prepared local food and The INN serves a wide selection of local & international wine, spirits and beer. The hotel also has a spacious garden for outdoor dining and facilities to host events, special occasions, meetings and weddings.

Booking is essential for all indoor & garden table reservations

