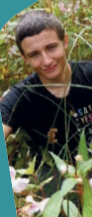


NEW FOREST NATIONAL PARK VOLUNTEER GUIDE 2018



**MAKE A
FRESH START
THIS YEAR!**

Packed full of volunteering opportunities from dozens of organisations in the New Forest.



Welcome to the New Forest National Park Volunteer Guide 2018

This guide offers you dozens of ways to get involved with volunteering in the New Forest, to change your life and the lives of others. No matter who you are or where you live, there will be a role perfect for you. All you need is some time and energy, and a passion for the Forest's history, environment or people.

Volunteering is a great way to meet people, learn new skills and help keep the New Forest special. Helping people in your community, surveying wildlife, meeting visitors and researching the past are just some of the opportunities in this guide.

We hope you enjoy volunteering in the Forest, and thank you for your interest in helping to protect this unique area!





Above: Explore new places around the
National Park when you volunteer

Organisations offering volunteer opportunities

Here is a list of organisations from the 2018 Volunteer Fair which have roles available throughout the year. You can find more information on volunteering in the New Forest on our website:

www.newforestnpa.gov.uk/volunteering



Blackwater Conservation Group

Established in 2013, the aims of the group are to facilitate and coordinate the work of conservation and environmental protection along the River Blackwater and its tributaries, and thereby benefit the landscape and ecology of the Blackwater Valley for future generations. Volunteers have the opportunity to monitor the quality of the river water and assess the health of the river by catching and counting the various species of invertebrates. A considerable amount of time is also spent removing the invasive non-native plant Himalayan balsam. Any volunteers willing to help with any of these tasks will be very welcome.

01794 390558

john@johnmartin.me.uk

www.blackwaterconservationgroup.wordpress.com

Brendoncare Foundation

Brendoncare runs seven clubs across the New Forest area, providing older people in the community with a variety of activities and opportunities for fun and friendship. There are traditional social clubs with a varied programme of entertainment and occasional outings. There are also more active clubs running during the week and at weekends, including fitness sessions in a leisure centre and our hugely successful indoor curling clubs. The clubs are run by small teams of volunteers and we are often looking for people to join these teams. Contact us for details of our current volunteering opportunities.

01962 857097

ataylor@brendoncare.org.uk

www.brendoncare.org.uk

Left: Volunteers from the Maritime and Coastguard Agency



Above: Share your knowledge and volunteer for the Bumblebee Conservation Trust

The Bumblebee Conservation Trust

The Bumblebee Conservation Trust (BBCT) was established because of serious concerns about the 'plight of the bumblebee'. BBCT exists to:

- Support the conservation of all bumblebees, rare or abundant
- Raise awareness and increase understanding about bumblebees.

Become a beewalker: help us to monitor bumblebee population changes by walking a fixed-route of 1-2km each month and recording what you see.

Fundraise for us: run a stall or do presentations.

Become a local volunteer coordinator for Hampshire: this involves organising and holding stalls at a variety of events in Hampshire, as well as helping organise for local volunteers to attend them.

02380 642 060

gill.perkins@bumblebeeconservation.org

www.bumblebeeconservation.org



“I’ve lived here for over 40 years and I’ve never learnt as much as I have in the last five years volunteering. I like getting out and about and exploring, and getting to know the environment better. I’m very interested in history, especially the Roman period, and I can always find something of interest to me.”

Tim Wilding,
Volunteer with the New Forest
National Park Authority on the
Our Past, Our Future project

Butterfly Conservation

The New Forest Transect Group organises the recording of butterflies at a number of strategic locations in the New Forest from 1 April until the end of September each year. Recorders work on a rota basis and experience is not necessary as the very nature of the activity ensures a good level of ID proficiency is quickly achieved. Help is always at hand.

02380 840 316

bobjeanannell@gmail.com

www.hantsiow-butterflies.org.uk/newforest.php

Christchurch and East Dorset Council's Countryside Team

The countryside team of Christchurch and East Dorset Councils looks after over 60 sites throughout East Dorset, ranging from salt marshes in estuaries to heathlands in old clay quarries. Our sites and tasks vary from week to week, so there’s something for everyone. We have practical conservation volunteering opportunities, as well as Volunteer Warden roles. No previous experience necessary, just interest and enthusiasm!

01202 795684

countryside@christchurchandeastdorset.gov.uk

www.dorsetforyou.gov.uk

(Search for Christchurch & East Dorset
Landscape and Countryside Team)

Community First New Forest

The Volunteer Centre, run by Community First New Forest, promotes and supports volunteering. The Centre works with both local people who are looking to volunteer and organisations who are looking for volunteers to help them in their daily work. The Centre operates an online recruitment and advertising portal, as well as running face-to-face drop-in session across the area. It also offers advice, information and training alongside actively promoting the work of organisations in the New Forest.

01425 482773

vol.bureau@cfnf.org.uk

www.cfnf.org.uk

Countryside Education Trust

The Countryside Education Trust's mission is to connect people with the countryside. We welcome schools and self-catered groups all year to our residential centre, with an emphasis on hands-on, outdoor learning. We also have treehouses in ancient woodland and teach a wide range of environmental activities. We run regular Owls playgroups, from zero to six years old and hold a variety of events, open days and courses throughout the year such as beekeeping, bushcraft and birdwatching walks. Volunteers are always needed to help in the garden, on the farm, with conservation activities in the office, and at open days and events.

01590 612401

mail@cet.org.uk

www.cet.org.uk

East Boldre Hedgehog Rescue

We rescue sick, injured and orphan hedgehogs. We rehabilitate them so that they can be released when they recover. We overwinter underweight hedgehogs, feeding and housing them through the winter to be released in the spring. We cover New Forest, Romsey, Southampton, Chandlers Ford, Waterside and surrounding areas.

We need help with:

- Daily hutch cleaning & topping up food/water with regular weight recording
- Fundraisers/writers to local businesses for support
- Driving to collect hedgehogs occasionally
- Overwintering hedgehogs
- Website development.

07595 709617

louise@louisegodden.plus.com

Exbury Gardens

Exbury Gardens and Steam Railway is a spectacular 200 acre garden set in the New Forest. The gardens offer woodland walks and world famous displays of rhododendrons, azaleas and camellias, along with a large collection of rare specimen trees.

We have a variety of volunteering opportunities available working alongside our gardens team. If you enjoy getting your hands dirty and learning new skills and would like to contribute to the upkeep and conservation of this unique garden why not come and join our team?

02380 891 203

thomas.clarke@exbury.co.uk

www.exbury.co.uk

Forestry Commission

The Forestry Commission manages the public forest estate in the New Forest.

We have two main volunteering opportunities:

- **Volunteer Rangers** play an integral role in helping to conserve wildlife and habitats while enhancing visitor enjoyment. Tasks include leading and helping with events, assisting visitors in the New Forest and providing valuable support to our rangers and keepers
- By joining our **Two Trees Conservation Team**, you'll learn about the management of our forests, experience the outdoors in a group activity, meet like-minded people and make a real difference to the area that you'll be helping to maintain. So if you enjoy the outdoors, want to learn new skills, meet new people and want to be part of the Forestry Commission team, get involved today!

0300 067 4601

volunteers.southern@forestry.gsi.gov.uk

www.forestry.gov.uk/england-volunteer



Above: Volunteers help clear sites as part of the Working Woodlands project (New Forest National Park Authority)

Foxlease Girlguiding Training & Activity Centre

Foxlease is a 65 acre estate with a vast array of opportunities for those looking to volunteer in the heart of the New Forest. We are a training, activity and events centre working with corporate groups, charities, schools and members of the Guide Association. This includes small and large scale events, gardening, historical or conservation projects, weddings, building or maintenance projects. Whatever your interests or experience, there is always plenty to get involved in and lots of fun to be had whilst doing it! If you are interested or know someone who may be then please do get in touch!

02380 282 638

foxlease@girlguiding.org.uk

www.foxlease.org.uk

Friends of Lepe Country Park

We promote community involvement and enjoyment of the country park. We keep members informed about what is going on at Lepe via a quarterly newsletter and supporting the park staff by providing volunteers. We also arrange walks, talks and social events for the membership.

Volunteers are needed to:

- Record wildlife sightings
- Staff the front of office
- Help with events, litter picking and sensory garden maintenance
- Support the Friends committee.

If you would like to become involved we would love to hear from you.

02380 899 108

lepe.enquiries@hants.gov.uk

www.hants.gov.uk/lepe

Friends of the New Forest - New Forest Association (NFA)

The NFA has been the independent voice of the New Forest since 1867, making it the second oldest conservation organisation in the world. For over 150 years our guiding purpose has been to protect, conserve and enhance the flora, fauna and heritage of the New Forest, and all that makes it unique. If you are looking to help, but not looking for physical activity, NFA needs a team to help with organisation, education, research and for this year in particular, creating and maintaining a significant online/offline marketing profile.

01425 621023

secretary@newforestassociation.org

www.newforestassociation.org

Friends of the New Forest Airfields (FONFA)

Our new museum and education centre provides an education and research facility for anyone interested in New Forest aviation history. It contains photographs, pilots' stories, aircraft models and prints, artefacts, and detailed information about the 12 WWII airfields and the WWI East Boldre training airfield.

Our outreach programme provides expert speakers about the airfields and associated local aviation and military topics to schools and interested groups. In addition, we hold commemorative events annually at our New Forest Airfields Memorial at Holmsley South (postcode: BH23 8EB).

We welcome volunteers to help with supporting both the Memorial and the Museum.

01245 611668

fonfa2010@gmail.com

www.fonfasite.wordpress.com



Above: Shauna Ball volunteering at Leppe Country Park scrub bashing event

The Green Island Holiday Trust

The Green Island Holiday Trust organises six supported holidays each summer for small groups of people with disabilities. The holidays are based at Holton Lee, a well-being discovery centre set in beautiful countryside between Poole and Wareham. Each group shares a week of fun and friendship centred round a varied programme of activities exploring the site and local area.

We are looking for volunteers who would like to participate in one of our holiday weeks, either as a residential volunteer or by assisting with specific activities. No previous experience is necessary, just lots of enthusiasm and the desire to have a great holiday.

01202 375006

organiser@greenislandholidaytrust.com

www.greenislandholidaytrust.com



Above: Hampshire and Isle of Wight Air Ambulance

Hampshire Constabulary

Our volunteers assist Police Officers, Special Constables, PCSOs and Police Staff in various capacities to enable us to focus on community priorities and visible policing.

Volunteering roles include:

- Community Speedwatch volunteers
- Volunteer Police Cadet Leaders
- Special Constables
- Independent Advisory Group volunteers.

HQ.volunteers@hampshire.pnn.police.uk
www.hampshire.police.uk

Hampshire and Isle of Wight Air Ambulance

Hampshire and Isle of Wight Air Ambulance provides an air ambulance service to the people of Hampshire and the Isle of Wight. Since our launch in July 2007 we have flown over 7,500 missions, many of these life-saving. The charity relies entirely on donations and support from the people and businesses in the region. We are looking for new members of our volunteering team to help us raise the £9,000 a day needed to keep HIOWAA bringing the emergency department to the patient.

02380 333 377

clegg@hiowaa.org

www.hiowaa.org

Hampshire Swifts

Hampshire Swifts was established with the objective of reversing the catastrophic decline of the swift in Hampshire. We organise the Hampshire Swift Survey, attend meetings and events across the county, run an annual Swift Day, help people and organisations put up swift nest boxes, lobby our elected representatives and encourage professionals in the building industry to adopt a more swift-friendly approach.

We are always looking for volunteers to help with these and many other future activities such as leading swift walks, running our website and developing links with schools.

01590 622835 / 07941 349002

andy@tali.me.uk

www.hampshireswifts.co.uk

hArt - Hampshire Art for Recreation and Therapy

hArt offers creative ways to support mental health.

We work with people of all ages and abilities, either in tailor-made programmes or group drop-in sessions. We can also provide one-to-one help. We know that working with the creative arts improves health and wellbeing, whether indoors or outdoors, and has enormous benefits for participants.

Volunteers are needed to support us in delivering workshops and programmes, but we are also looking for secretarial and administrative assistance, as well as fundraising. We will be running programmes and attending events across the area in 2018 and will need volunteers to staff stalls as well as supporting the therapists and group leaders on specific projects.

01590 435045
contact@hart.works
www.hart.works

Hampshire County Council Countryside Service

Hampshire County Council's Countryside Service is responsible for the management of 80 sites, 71 heritage features, 1,380ha of grassland, 1,524ha of woodland, 112ha of heathland, 225ha of wetland, seven country parks and almost 3,000 miles of rights of way. We are looking for volunteers to help us manage these valuable areas for both public enjoyment and wildlife interest.

02380 605 109
Natalie.hands@hants.gov.uk
www.hants.gov.uk/volunteering

Hampshire & Isle of Wight Wildlife Trust – New Forest Non-Native Plants Project

The New Forest Non-Native Plants Project is hosted by Hampshire & Isle of Wight Wildlife Trust and welcomes volunteers to help pull up Himalayan balsam which has invaded river banks in the New Forest area. Himalayan balsam has short roots and is easy to pull up so if you enjoy being outside and have a bit of time to spare in the summer, why not join our friendly volunteer work parties? We are also looking for people to survey invasive non-native plants and monitor the effectiveness of work undertaken to control them.

07770 923315
Catherine.Chatters@hiwwt.org.uk
www.hiwwt.org.uk



Above: Adam Cooper from Hampshire County Council at Lepe Country Park scrub bashing

Lyndhurst & District Community First Responders

Community First Responders (CFRs) are volunteers working for the ambulance service; we provide 24hr local emergency medical response to life threatening illnesses and injuries, pending the arrival of an ambulance.

There are opportunities for volunteers to provide emergency medical cover in and around Lyndhurst and the immediate surrounding areas.

Volunteers can provide cover to suit their own circumstances, which may be as little as one or two hours a week to whatever the individual can offer. No medical experience is required as full training is provided by South Central Ambulance Service.

02380 282 866

lyndhurstcfr@sca-charity.org.uk
www.sca-charity.org.uk

Lyndhurst and Minstead Bellringers

Bellringing has its roots in the 17th century when a change in technology allowed bells to be rung in a set order. The prime purpose is to ring for Sunday service but also for weddings and other events. We are a social bunch who meet on Thursdays (7.30 - 9pm) to practice, followed by a trip to the pub and ring for morning service on Sundays. Strength is not needed to ring, but free movement of limbs and normal coordination are necessary. If you are interested please contact us and come along to a practice night.

02380 282 842

paultrend@outlook.com

Lyndhurst Community Centre

We are looking for volunteers to get involved in our events, maintenance and reception. It is imperative that the centre makes enough money to be sustainable going forward and provides this invaluable service for the people of Lyndhurst and the local district. The centre has a hugely diverse number of clients; from the local community to national organisations. The centre is a non-profit charity run by the Lyndhurst and District Community Association. We aim to provide a venue for recreational, cultural and sporting activities. Make a difference in your community and meet new people.

02380 282 267

admin@lyndhurstcomm.org
www.lyndhurstcomm.org/

Milford Conservation Volunteers (MCV)

We work locally at various nature reserves around Milford, including the Pleasure Grounds (woodlands), Studland Common, Studland Meadow, Sturt Pond and 'Baskets'. We have produced our own Milford-on-Sea Biodiversity Plan. We meet on the first Sunday of every month and volunteers undertake coppicing, tree thinning, tree and hedgerow planting, non-native invasive species clearance, scrub removal, glade creation, bird hide and bird observatory maintenance, educational walks, footpath maintenance, boardwalk, bridge and pond restoration, and wildlife monitoring and recording.

01590 645825

keithmetcalf@btinternet.com
www.milfordcv.org

Minstead Trust

Minstead Trust is the new name for the merged charities of Minstead Training Trust and Furzey Gardens, and also incorporates the Minstead Lodge hospitality social enterprise. We are based in Minstead village in the New Forest and support people with learning disabilities across Hampshire, Wiltshire and Portsmouth.

Each part of Minstead Trust works towards our vision and mission, and our values are core to who we are.

Our vision: adults with learning disabilities are able to achieve greater independence, lead fulfilled lives and live as full citizens in our society.

Our mission: to provide training for adults with learning disabilities to enable them to develop new skills, lead fulfilled lives and achieve greater independence.

Furzey Gardens: there are opportunities in the gardens, gallery and assisting at events.

Minstead Lodge: we have day service opportunities, working alongside our instructors, supporting service users within various workshops (animal care, literacy and numeracy, IT, horticulture). Alternatively we always need help fundraising, assisting at events, and with general DIY and maintenance.

02380 812 297

bev.spanswick@minsteadtrust.org.uk

www.minsteadtrust.org.uk



Above: Forestry Commission Rangers and volunteers after successfully clearing six bags of rubbish and dismantling an illegal camp in the Forest

National Trust

The National Trust works to preserve the New Forest Northern Commons through practical conservation, learning and discovery, and encouraging visitors to enjoy the area every year. As a charity we rely on the generosity of volunteers to continue this work.

Current volunteering opportunities in the New Forest include practical conservation work such as gorse, holly and rhododendron cutting and burning, pine and ragwort pulling, and tree planting in Foxbury. During the summer there are opportunities to get involved with species surveying for an array of wildlife including heathland flora, birds, butterflies and reptiles, as well as supporting us during events. We also have opportunities for community volunteers for those who would like to look after certain sites.

01425 650035

info.newforest@nationaltrust.org.uk

www.nationaltrust.org.uk/newforest



Above: Ray cataloguing historical documents and objects as part of the New Forest Knowledge project (New Forest Centre)

New Forest Area Conservation Volunteers

The main aim of the group is to enhance the natural environment in and around the New Forest by means of practical conservation work. This work is done through a varied programme of tasks which are undertaken by members who provide the voluntary workforce. In every case, the tasks are planned to conserve and improve the countryside around us, maintaining and increasing the variety of wildlife habitats and hopefully people's understanding of the countryside.

01590 671915

heatherlipscombe3@gmail.com

www.newforestacv.org

New Forest National Park Authority: Our Past, Our Future

The Our Past, Our Future landscape partnership scheme is delivering 21 projects with 10 partners to restore lost habitats, develop Forest skills and inspire a new generation to champion and care for the Forest. Volunteers are an essential part of the scheme, with dozens of opportunities available, from desk-based research to archaeological surveys and scrub clearance – so please get in touch.

You will have the chance to be a part of a series of programmes promoting learning, community involvement and landscape restoration within the New Forest. With your help, we can help people develop the necessary skills and enthusiasm needed to care for the Forest and make it fit to face the challenges of the future.

01590 646661

richard.austin@newforestnpa.gov.uk

[www.newforestnpa.gov.uk/
opofvolunteering](http://www.newforestnpa.gov.uk/opofvolunteering)

New Forest Centre

Volunteers are an essential component of the New Forest Centre in our aim to offer everyone an understanding of what makes this area so special. We are looking for volunteers to assist in all areas of the Centre, but especially in the Museum and Reference Library. These roles are distinct but not unique so you can support us in a variety of roles if you wish to. Knowledge of the New Forest is useful but not essential to these roles, but a willingness to learn new skills and the ability to work well with the public is vital.

02380 283 444

office@newforestcentre.org.uk

www.newforestcentre.org.uk

New Forest Disability Information Service

We provide free, impartial, disability related information, advice and guidance to disabled people, their families, carers, professionals and any other interested person. We help over 2,000 people a year, answering in excess of 6,800 enquiries.

We are seeking more volunteers to help in all areas of our charity, including training to give first point of contact information or more advance advice work. Full training is given for all roles and enhanced DBS is required (at our cost).

01425 628750 (helpline)

info@newforestdis.org.uk

www.newforestdis.org.uk



“ I am an Information Officer with New Forest Disability. This involves meeting people face to face to answer enquiries at the New Milton Office, answering the phone, writing client logs, doing filing and selling a wide range of new and lightly used mobility equipment and daily living aids. I enjoy being part of a very friendly, organised and committed team. I love selling things to help with fundraising, meeting the public and the occasional slot at Lymington Hospital foyer on a Wednesday morning is a real highlight. I just love it! ”

Sylvia Shepherd-Clarke,
New Forest Disability
Information Service



Above: Calmore Guides pulling Himalayan balsam

New Forest Mencap

We are a local charity supporting adults with learning disabilities across the New Forest. We run three weekly clubs providing fun social activities such as sport, art, drama and music. Volunteers play a vital part within our charity in a variety of roles: supporting club leaders, community fundraising events and working in our charity shop in New Milton. We also run the New Forest Gateway Award, similar to Duke of Edinburgh Award, but tailored specifically for people with learning disabilities, so people with specific skills are most welcome even if just on an occasional basis. We are also currently running healthy cooking classes and we work with other organisations at which volunteers are required to assist. We are looking for a bank of volunteers to help enrich the lives of vulnerable adults locally. You can make permanent commitments, opt to volunteer for a short block of time or just be on call.

01425 621893

fundraising@newforestmencap.org
www.newforestmencap.org.uk

New Forest Nightstop

New Forest Nightstop is the only provider of emergency accommodation in the New Forest for young people aged 16 - 24 and 25+ who find themselves homeless. Our hosts give safe overnight accommodation, protection from danger, a listening ear and security. If you have a spare room and you can offer a bed and a simple meal this volunteering opportunity is flexible to fit in with your home and work life or alternatively can offer a few hours of support. All expenses are covered and training and support is given at all times.

01425 478391

nightstop@cfnf.org.uk

www.newforestnightstop.org.uk



Above: New Forest Nightstop at the volunteer fair

The New Forest Rotary Club at Lyndhurst

We are always looking for volunteers to assist with our charitable and social projects and campaigns. Ultimately, we would hope to recruit new members to our club to be able to extend our already wide range of charitable activities we currently undertake.

02380 661 613

tinaandtim@richardsonmail.eu

New Forest Transition

Transition is about sustainability and it's about local people working together to benefit their community. In the New Forest there are various groups working on activities like growing their own food, reducing waste and generating renewable energy, whilst also supporting the local economy.

The Food Challenge was Transition's first big project, helping people, schools, families and businesses to start growing their own food. The Schools Energy Project, also under the Transition umbrella, helps schools and their communities to have fun while learning about how to save energy. Volunteers are always welcome at our activities and events.

01590 675613

events@newforesttransition.org.uk

www.newforesttransition.org.uk

“It's a great feeling knowing that we've helped to spread the word about this vital service.”

Jo A,
Hampshire and Isle Of Wight
Air Ambulance volunteer

Oakhaven Hospice Trust and the Coates Centre

Oakhaven Hospice provides specialist palliative care to patients facing life-limiting illness and their loved ones. The Coates Centre is a drop-in centre for those whose lives have been impacted by illness.

We need volunteers to drive patients, serve meals, visit patients in their homes, support bereaved families, sell tickets, stuff envelopes, help visitors, answer phones and much more! Contact us today to get a full list of available roles and information on how to apply.

01590 646447

clare.celea@oakhavenhospice.co.uk

www.oakhavenhospice.co.uk/
volunteering-5/

Patrick's Patch at Fairweather's Garden Centre

Patrick's Patch is a free-to-enter, inspiring and productive garden, adjacent to Fairweather's Garden Centre in Beaulieu High Street. Year-round we grow a wide range of vegetables, fruit, herbs and cut flowers that are used in Steff's Kitchen. Our Head Gardener Rachel is supported by a loyal group of garden volunteers, primary school children and special needs groups who regularly visit to learn gardening skills and understand where our food comes from. We welcome volunteers over the age of 18, with gardening knowledge or without. Get outdoors and come and enjoy gardening at Patrick's Patch.

01590 612113

info@fairweathers.co.uk

www.fairweathers.co.uk

PEDALL, New Forest Inclusive Cycling

PEDALL provides cycling sessions for people with a disability or who need some support to cycle in the New Forest National Park. We have a range of specialist bikes to suit different needs. Our rides are all on off-road traffic-free routes, surrounded by wildlife. We transport the bikes to the start point. All of our rides are led by experienced staff or volunteers.

PEDALL needs volunteers who can enthuse and motivate others and have a real passion for working with and engaging people with a disability or who need support to cycle in an outdoor environment.

As a volunteer you will:

Assist the PEDALL team to deliver high quality, fun, introductory and cycling sessions around the New Forest; and/or help maintain the various specialist bikes.

01590 646640

info@pedall.org.uk

www.pedall.org.uk



Above: Volunteers enjoying some time outdoors whilst working on the Working Woodlands project (New Forest National Park Authority)

Pondhead Conservation Trust

We are an award-winning conservation charity, which is restoring 200 acres of New Forest woodland, to improve its biodiversity and enhance its public enjoyment. Our community woodland project is run entirely by volunteers who benefit from plenty of fresh air, exercise and friendly company. While volunteering they learn about the Forest, its biodiversity and conservation. Our woodland is managed on a fully sustainable basis by using the timber we cut to produce charcoal that is sold locally. We are recent winners of the CPRE Hampshire Countryside Award (Community & Volunteering) and were voted UK National Parks Volunteer Project of the Year.

07887 811712

pondheadconservation@gmail.com

www.pondheadconservation.org.uk

Ringwood and Fordingbridge Footpath Society (RFFS)

The RFFS helps keep the footpaths of over 13 parishes in Hampshire. Each path is walked in a three yearly rotation and problems are reported to Hampshire County Council. Volunteers help in erecting gates, waymarking and clearance. We also have a weekly walks programme for members and visitors, and social activities throughout the year. Meetings are held at Greyfriars Community Centre, Ringwood.

01425 656360

ruthcroker@talktalk.net

www.rffs.org.uk

The Royal Society for the Protection of Birds (RSPB)

We are a conservation charity which carries out international and UK based work. In the New Forest we have a 'Date with Nature' where we show the public 'live' footage from goshawk, buzzard and hobby nests. This is a partnership project which informs the public about the wildlife of the New Forest and the conservation work carried out there.

We need volunteers to help staff the New Forest Reptile Centre from April to September 2017.

01273 775333

liess.baadj@rspb.org.uk

www.rspb.org.uk

SS Shieldhall

The SS Shieldhall is a heritage cargo passenger ship included in the National Historic Fleet and is generally recognised to be the largest working steamship of her type in Europe. There are opportunities to volunteer with the deck crew or engineering teams based in Southampton, plus assist the marketing, educational, catering and retail teams. Volunteers man the Shieldhall on her regular cruises into the Solent and beyond and are on board most Wednesdays and Saturdays. Details of volunteer opportunities and 2018 sailing programme are available online.

07784 735975

volunteering@ss-shieldhall.co.uk

www.ss-shieldhall.co.uk

Warren Copse and Holbury Manor Conservation Group

The Warren Copse and Holbury Manor Conservation Group assists Fawley Parish Council in maintaining and conserving Holbury Manor and Warren Copse, to give the local community a sense of ownership of the local amenity. With the guidance of a 20 year Forestry Commission Management Plan for Warren Copse and a 10 year HLS agreement from Natural England for the Manor site, the project is restoring the ancient and semi-natural woodland to its former glory to promote its flora and fauna. We also work closely with the National Park and New Forest Land Advice Service.

02380 894632

holtham@aol.com

Woodlander Hoburne Bashley

Woodlander is an award winning organisation that manages 20 acres of privately owned mixed deciduous woodland, which also includes a small mixed coppice area which is being managed back into rotation. We provide woodland education to schools and recreational activities to holiday makers and for the local community. We maintain the current woodland habitats and increase the level of biodiversity within these woods through our conservation programmes. There are five areas of conservation: maintaining and improving habitats, clearing invasive species, stream clearance to improve sea trout's journey to their spawning grounds, coppicing and improving butterfly biodiversity.

01425 612340

info@woodlandercoppice.co.uk

www.woodlander-coppice.co.uk

“It's wonderful. Not only do you have fresh air, you help your heart, and meet such lovely people.”

Audrey Clark,
Volunteer for the New Forest National Park
Authority, Our Past Our Future project



Contact us

New Forest National Park Authority

Lymington Town Hall, Avenue Road,
Lymington SO41 9ZG

Telephone: 01590 646600

enquiries@newforestnpa.gov.uk

www.newforestnpa.gov.uk



newforestnpa

NPA 00787, January 2018

Printed on environmentally-friendly stock.

Please contact us if you would like to receive this publication in another format such as large print or Braille.



Above: Audrey Clark