

Proposed developments along the Waterside

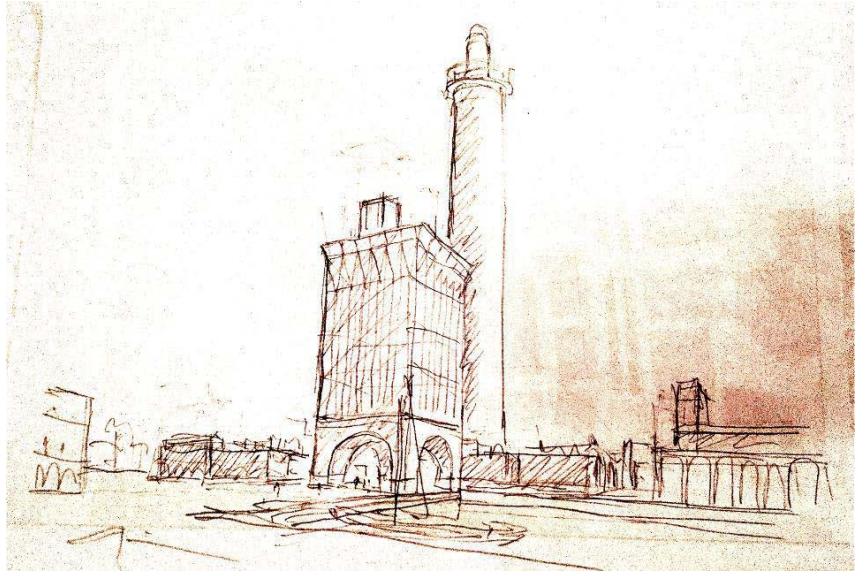


Fawley Power Station



- 1,500 homes in 15 years
- 1,500 jobs
- Primary school
- Fast ferry service
- Road improvements
- Major environmental enhancements





<http://www.newforest.gov.uk/article/17494/Fawley-Power-Station-Partner-Day>



[Skip Navigation](#) | [Home](#) | [Contact us](#) | [Help](#)

Council Services

[Jobs](#)

[Health and leisure](#)

[Location information](#)

[Visitors](#)

Enter a keyword...

Search

[Benefits and Council Tax](#)

[Business](#)

[Council and democracy](#)

[Environment](#)

[Housing](#)

[Planning](#)

[More...](#)

You are here: [Council Services](#) · [Business](#) · [Economic Development](#) · [Fawley Power Station](#)

Council Services

Business

Economic Development

Business Contacts

Employment and Training Initiatives

Facts, Figures and Research

Firms and Employment

New Forest LEADER

Local Workforce and Skills

Sites and Premises

Fawley Power Station

Fawley Power Station Partner Day

On 20 January 2017 representatives from various government departments and those with a local interest gathered at the Fawley Power Station site to discuss the future of the site and where those represented could work together for the best possible outcome.

A number of presentations were made during the day, copies of which are set out below

[Fawley Waterside](#)

[New Forest National Park Authority](#)

[New Forest District Council](#)

[Hampshire County Council - Highways](#)

[Hampshire County Council - Economic Development](#)

[Natural England](#)

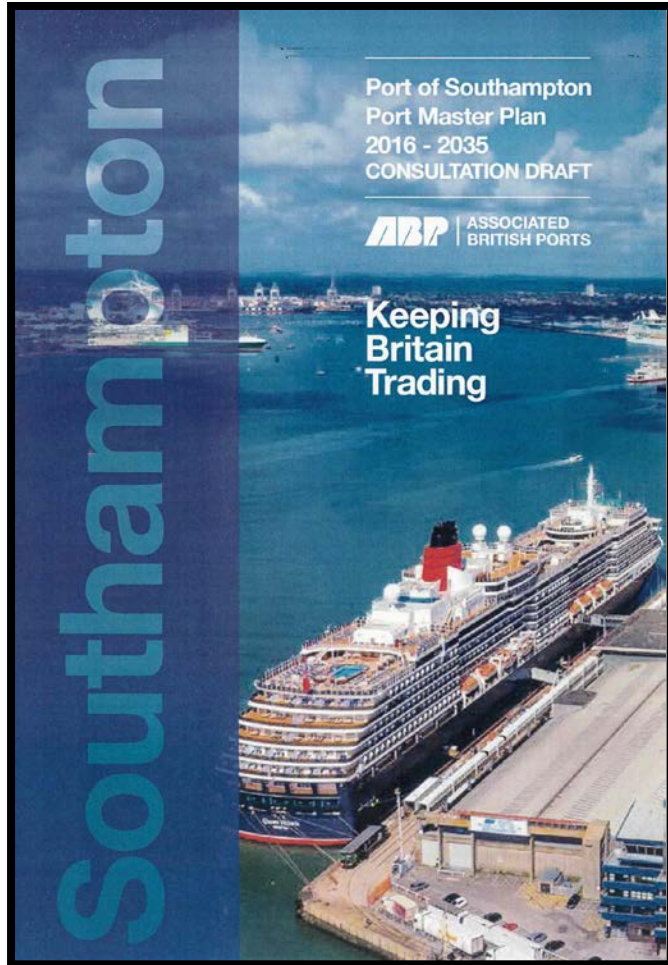
[Solent Local Enterprise Partnership](#)

[Enterprise M3 Local Enterprise Partnership](#)

[Homes and Communities Agency](#)

Published: 13 Feb 2017

Dibden Bay



Chapter 7 (page 81):

“Therefore, by 2020 we consider that we will have undertaken necessary feasibility studies and research into how the Port can be expanded and will likely be in the position where we have brought forward, or are in the process of bringing forward proposals that are considered necessary as a result of this work. This is likely to involve the working up of proposals to expand the Port in one form or another onto the strategic land reserve we hold.”

About us

Our work

Annual review

Business plan

Chief Executive's reports

Consultations

Open consultations

➤ Consultation outcomes

Management plan

Navitus Bay wind park

Park Life newspaper

Recreation management strategy

State of the park

Home > About us > Our work > Consultations

Consultations



Consultation outcomes

The consultations listed below are now closed for response. Details of responses, summary and outcome will be posted on this page.

Topic	Consultation	Responses
ABP Southampton Port Master Plan	14 October - 25 November 2016	The National Park Authority ('the Authority') welcomes the opportunity to comment on the consultation draft Port of Southampton Masterplan 2016 – 2035. Please find our response online .
NFDC Local Plan Review 2016 - 2036	15 July - 16 September 2016	We support the District Council's decision to publish a detailed consultation document setting out the context

Marchwood Military Port

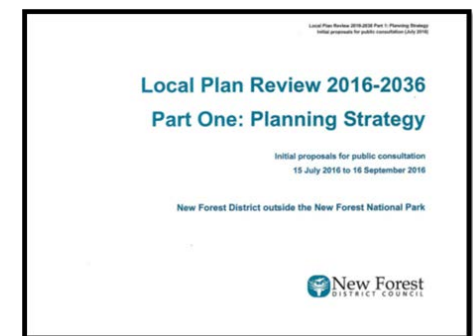
Solent Gateway took full control of port operations in October 2016

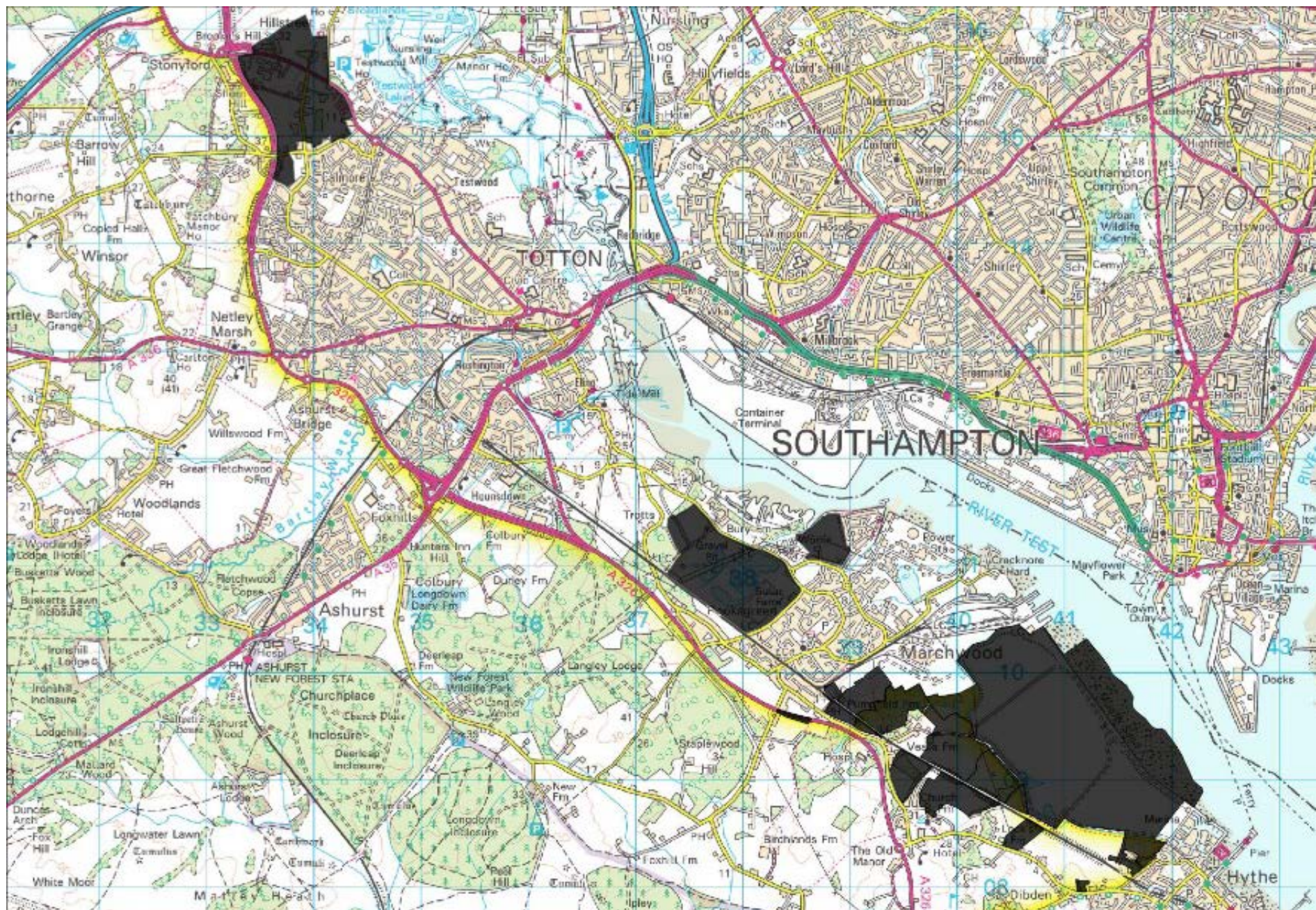


“The port presents significant opportunities for additional commercial development and further job opportunities on site”

NFDC Local Plan Review

- 180 dwellings on land north of Marchwood
- 880 dwellings on land west of Marchwood
- 990 dwellings and 5 ha employment on land north of Totton
- 150 dwellings at Eling Wharf





TOTTON

SOUTHAMPTON

CITY OF SOUTHAMPTON

Ashurst

Marchwood

Hythe

Map by H. Head

About us

Our work

Annual review

Business plan

Chief Executive's reports

Consultations

Open consultations

➤ **Consultation outcomes**

Management plan

Navitus Bay wind park

Park Life newspaper

Recreation management strategy

State of the park

Home > About us > Our work > Consultations

Consultations



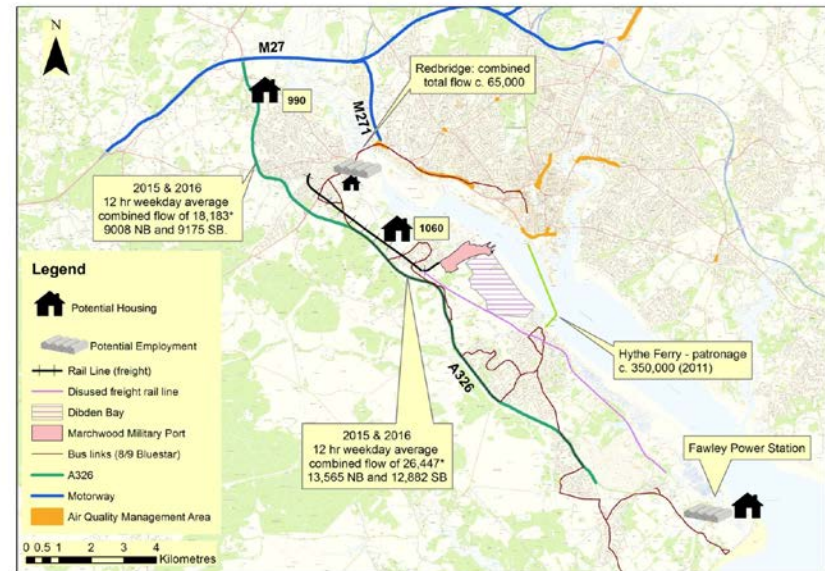
Consultation outcomes

The consultations listed below are now closed for response. Details of responses, summary and outcome will be posted on this page.

Topic	Consultation	Responses
ABP Southampton Port Master Plan	14 October - 25 November 2016	The National Park Authority ('the Authority') welcomes the opportunity to comment on the consultation draft Port of Southampton Masterplan 2016 – 2035. Please find our response online .
NFDC Local Plan Review 2016 - 2036	15 July - 16 September 2016	We support the District Council's decision to publish a detailed consultation document setting out the context

HCC Strategic Transport

- HCC developing
 - a transport evidence base for the Waterside
 - a strategy and vision for access to the Waterside, to consider the cumulative impact of development
- Likely work will be required on the transport capacity of the A326 – which for much of its length forms the National Park boundary.



The Partnership for Urban South Hampshire (PUSH)

- PUSH Spatial Position Statement (June 2016) proposes an additional 19,450 new dwellings in the City of Southampton by 2034





National Park considerations:

- Highest level of protection
- Presumption against major development
- Section 62 duty
- Recreational impacts
- Landscape impacts
- Tranquility
- Light and noise pollution
- Habitat mitigation/SANGs
- Design and layout

Proposed developments along the Waterside

