

New Forest National Park Authority



Local Development Scheme Fourth Revision

March 2016

This Local Development Scheme sets out the New Forest National Park Authority's programme for the review and adoption of the Local Plan for the New Forest National Park. It was brought into effect on 24 March 2016.

New Forest National Park Authority Local Development Scheme 2016

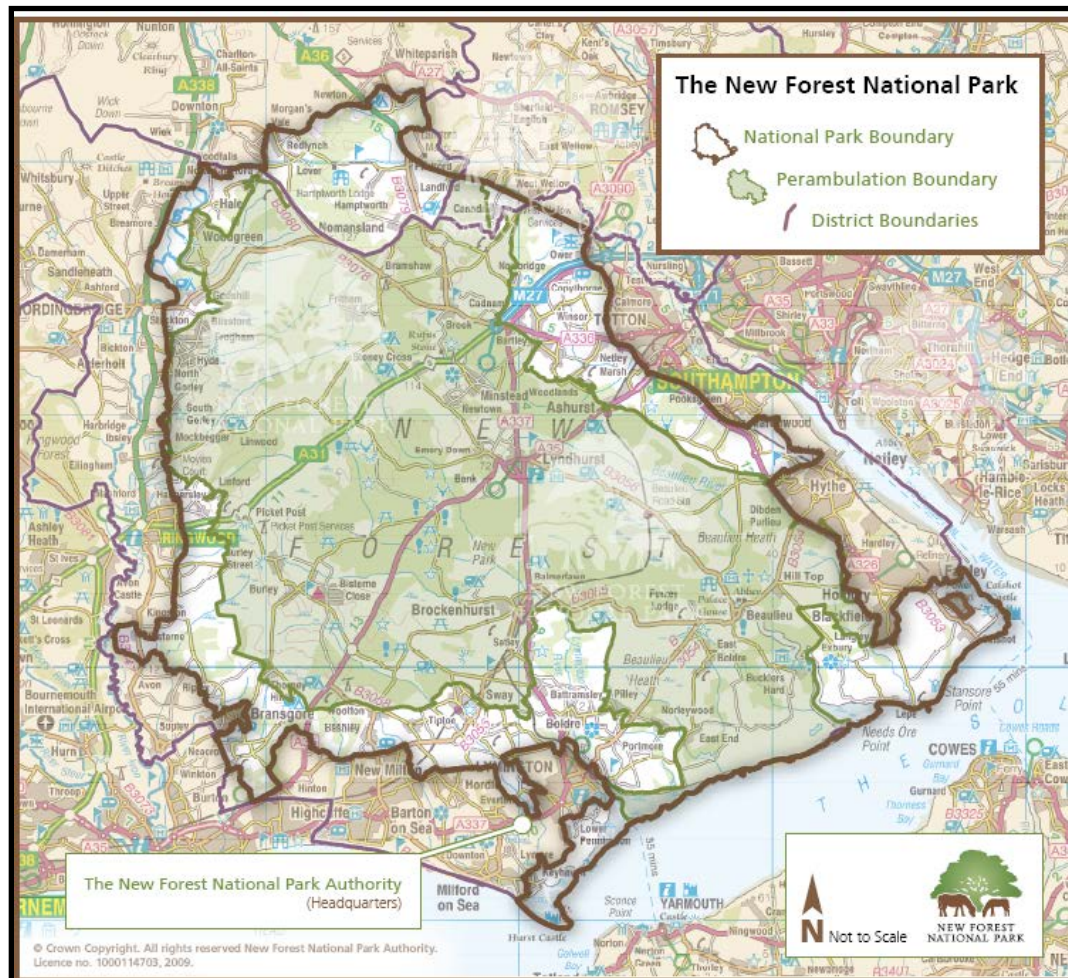
1. Introduction

1.1 The New Forest National Park was designated in March 2005 and the National Park Authority assumed its full planning responsibilities in April 2006. The Authority's role is to ensure that the two statutory purposes of National Park designation are achieved, namely:

- to conserve and enhance the natural beauty, wildlife and cultural heritage of the Park; and
- to promote opportunities for the understanding and enjoyment of the Park's special qualities by the public.

In pursuing these purposes, the Authority is required to seek to foster the economic and social well-being of local communities within the Park.

1.2 The New Forest National Park covers 220 square miles - including parts of New Forest District, Test Valley Borough and Wiltshire Council - within the counties of Hampshire and Wiltshire (see indicative map below).



- 1.3 The National Park Authority is responsible for spatial planning, minerals and waste planning, development management, enforcement and other related regulatory functions within the National Park.
- 1.4 The National Park Authority is also responsible for meeting the requirements placed on local planning authorities under the Planning & Compulsory Purchase Act 2004. This includes the preparation of a Local Development Scheme (LDS) setting out the timetable for the production of a new or revised Local Plan for the area.
- 1.5 The National Park Authority prepared its first LDS in 2007 and issued updates in 2009 and 2011. A number of documents outlined in these earlier Schemes have now been adopted, including the Minerals & Waste Core Strategy (2007), the Core Strategy & Development Management Policies DPD (2010), and the Hampshire Minerals & Waste Plan (2013), as well as a number of Supplementary Planning Documents and Village Design Statements.
- 1.6 The statutory 'development plan' for the New Forest National Park currently comprises:
 - the New Forest National Park Core Strategy and Development Management Policies DPD (2010); and
 - the Hampshire Minerals and Waste Plan DPD (2013).
- 1.7 Following the publication of the Government's NPPF in 2012 which marked a return to a single Local Plan for an area, as well as amendments to remove the requirement for Supplementary Planning Documents to be listed in the LDS, the revised Scheme focuses solely on the review of the Local Plan for the National Park. The new Local Plan for the National Park is due to be adopted in 2018, following further public consultation (guided by our Statement of Community Involvement, 2013) and examination by the Planning Inspectorate on behalf of the Secretary of State.
- 1.8 It should be noted that the New Forest National Park Authority works in partnership with Hampshire County Council, Portsmouth City Council, Southampton City Council and the South Downs National Park Authority on the delivery of the minerals and waste planning function. There is a separate adopted LDS (2014) for minerals and waste which can be found on the Hampshire County Council website.

Programme for the review of the New Forest National Park Local Plan

	2015			2016								2017								2018																		
	Q4			Q1			Q2		Q3			Q4		Q1			Q2		Q3																			
	O	N	D	J	F	M	A	M	J	J	A	S	O	N	D	J	F	M	A	M	J	J	A	S	O	N	D	J	F	M	A	M	J	J	A	S		
Local Plan Review																																						
Minerals & Waste Plan	See separate Hampshire Minerals and Waste Local Development Scheme																																					

KEY	
Public consultation on the scope of the Local Plan Review (Reg. 18)	
Consideration of Reg. 18 responses and further evidence base work	
Publication of Initial Draft Local Plan for consultation (non-statutory stage)	
Consideration of responses and preparation of Submission draft Local Plan	
Publication of Submission Draft Local Plan for public consultation (Regs. 19 and 20)	
Consideration of responses	
Submission of draft Local Plan to Secretary of State (Reg. 22)	
Independent Examination – commences at Submission (Reg. 24)	
Adoption of Local Plan and revisions of Policies Map (Reg. 26)	

The relevant regulations can be found in the *Town and Country Planning (Local Planning) (England) Regulations 2012*

Title	New Forest National Park Local Plan Review	
Role and content	Sets out the vision, objectives and spatial strategy for planning in the National Park within the context of the two statutory Park purposes and related duty. The allocation of sites will be considered where appropriate. The revised Local Plan will set out the policies against which planning applications will be considered.	
Status	Development Plan Document (DPD)	
Chain of conformity	The revised Local Plan will respond to the requirements of the National Planning Policy Framework (NPPF), the Government's National Planning Practice Guidance (NPPG) resource and primary legislation covering National Parks.	
Geographic coverage	The whole of the New Forest National Park	
Timetable		
Milestones	Public consultation on the scope of the Local Plan Review (Reg. 18)	October – November 2015
	Consideration of Reg. 18 responses and further evidence base work	December 2015 – September 2016
	Publication of Initial Draft Local Plan (non statutory stage) for public consultation	October – November 2016
	Consideration of responses and preparation of Submission Draft Local Plan	December 2016 – June 2017
	Publication of Submission draft Local Plan for consultation (Reg. 19)	July – September 2017
	Consideration of responses	October – November 2017
	Submission of the Local Plan to Secretary of State (Reg.22)	December 2017
	Independent Examination into the Local Plan (Reg. 24)	January – May 2018
	Adoption of Local Plan and Policies Map (Reg. 26)	June 2018
Arrangements of production and review		
Who is leading the production of the document?	National Park Authority's Policy Team, with input from specialist officers within the Authority, and from partner organisations.	
Management arrangements	Approval required by full National Park Authority meeting at key stages of production.	
Resources	Policy team at the NPA, supported by other teams within the NPA, external organisations and specialist consultants where required	
External community involvement	Statutory consultation taking into account commitments in the Authority's adopted Statement of Community Involvement (2013)	
Monitoring and review mechanisms	Annual Monitoring Report	

Glossary and abbreviations

AMR	Annual Monitoring Report - This report assesses the implementation of the Local Development Scheme and the extent to which policies are being successfully implemented.
Core Strategy	The Authority's adopted Core Strategy (2010) which sets out the long term vision, objectives and spatial strategy for planning within the National Park. The Core Strategy will continue to form a key element of the 'development plan' for the Park until it is formally replaced by the adoption of the revised Local Plan in 2018. .
Development Plan	As set out in Section 38(3) of the Planning and Compulsory Purchase Act 2004, an area's development plan forms the basis for determining planning applications. The development plan for the New Forest National Park currently comprises the adopted National Park Core Strategy (2010) and the adopted Hampshire Minerals & Waste Plan (2013).
LDS	Local Development Scheme -Sets out the programme for preparing the Local Plan for an area.
Neighbourhood Plans	Introduced by the Localism Act 2011, Neighbourhood Plans allow local communities to prepare their own planning policies for their area. The Plans must go through public consultation, examination and local referendum before being adopted as part of the 'development plan'. Although not listed within this LDS, local communities have the option of preparing the own Neighbourhood Plans where appropriate.
NPPF	National Planning Policy Framework - The consolidated set of national planning policies originally published by the Government in 2012. The NPPF is a material consideration in the determination of planning applications and in the preparation of local plans for an area.
NPPG	National Planning Practice Guidance - Online Government resource providing additional guidance on a range of national planning policy.
Policies Map	A map indicating the areas to which particular development plan policies apply. It will be revised when the revised Local Plan is adopted.
SCI	Statement of Community Involvement (2013) - Sets out the standards which the National Park Authority will achieve with regard to involving local communities in the preparation of local development documents and development management decisions.