

Fun games and activities

for your train or bus journey to the New Forest National Park

Print
me

Wild Wordsearch

Use your pointy finger
to trace over the words in the grid below.

A	N	B	E	E	C	H	E	W	N
F	N	O	R	Y	E	S	T	H	E
T	O	I	N	U	R	B	T	E	W
A	U	O	M	L	I	A	E	U	F
L	P	R	Y	A	E	N	D	H	O
U	A	R	B	H	L	S	T	B	R
F	R	O	C	O	A	S	T	W	E
C	K	E	N	A	G	H	U	I	S
R	S	T	H	K	D	E	E	L	T
R	W	O	O	D	L	A	N	D	A

Animals
Beech
Bog

Coast
Farm
Heath

New Forest
Oak
Park

Pony
Wild
Woodland



Point and Circle

Can you point out the following
and circle them in the picture above?

Cyclists Owl Stag Swan Squirrel

Missing letters

Find the missing letters to become a forest friendly cyclist

Stay on the tracs – to help care for the Foest

Go lowly around nimals – ring your bell so they know you're there

hink of others – be olite and say hello

Have un!

Missing letters – r f a k p t s e

Answers: Stay on the tracks – to help care for the Forest. Go slowly around animals – ring your bell so they know you're there. Think of others – be polite and say hello. Have fun!



Who's done that?!



See if you can match the animal to its footprints and poo.

By the way, I'm **NOT** a commoners' animal but I do live in the New Forest.



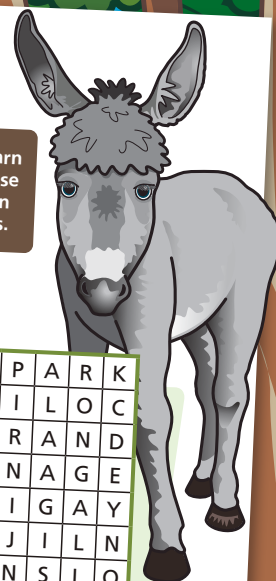
Pony = D 1, Cow = B 4, Pig = A 3, Deer = E 2, Sheep = C 5

A

Special names and words

	Ponies	Donkeys	Cattle	Pigs	Sheep
Male	Stallion	Jack	Bull	Boar	Ram
Female	Mare	Jenny	Cow	Sow	Ewe
Baby boy	Colt foal	Jack foal	Bull calf	Shote	Ram lamb
Baby girl	Filly foal	Jenny foal	Heifer calf	Shute	Ewe lamb
1 year old	Yearling	Yearling	Stirk	Gilt (female)	Yearling

See if you can learn the names of these animals and then test your friends.



Words are hidden up, down, across, diagonally and backwards!

Can you find these New Forest words?

PONY BREED DRIFT
COW BAY VERDERER
PIG DUN COMMONER
SHEEP HAUNT NATIONAL PARK
DONKEY COLIC CROWN LAND
DEER ACORN PANNAGE
FOAL GORSE GALLOWAY
CALF AGISTER SADDLEBACK
CATTLE BRAND
SOW COLLAR



www.newforestnpa.gov.uk/familycycling

1. REEF TOWNS
Clue: What you've come to see

2. STEER
Clue: What makes a wood

3. WETTER SUNROOF
Clue: All aboard

4. ANORAK ANT LIP
Clue: The special status of the New Forest

5. PLACE SAND
Clue: The view from the top deck

6. TACOS
Clue: At the southern tip

7. BURNT SHOCKER
Clue: New Forest town

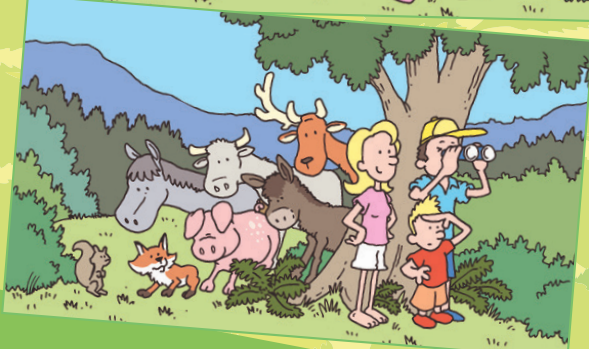
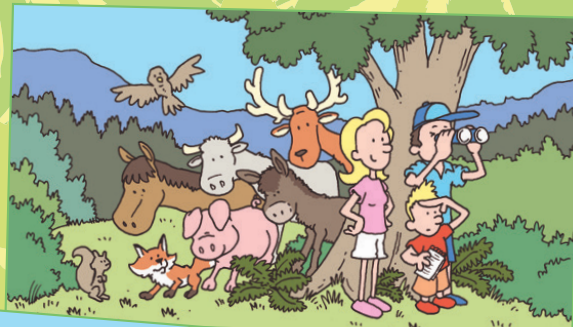
8. COME MORN
Clue: A particular kind of New Forest person

9. SO I PEN
Clue: You'll see them everywhere

10. HANDLE HAT
Clue: Open areas away from the trees

Can you unscramble the New Forest
Anagrams?

Answers: 1. New Forest 2. Trees 3. New Forest Tour
4. National Park 5. Landscape 6. Coast
7. Brockenhurst 8. Commoner 9. Ponies 10. Heathland



Spot The Difference

Can you point out seven differences between the two pictures?

New Forest Spy

Use your pointy finger to spy the following on your Family Cycle Adventure



Pony



Cow



Deer



Tour Bus



Boundary Marker



Cyclist



Donkey



Ranger



Pig



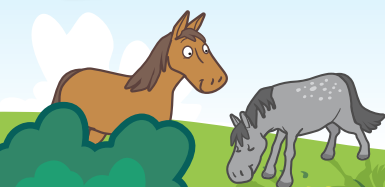
Walker



Tent



Sway Tower



www.newforestnpa.gov.uk/familycycling