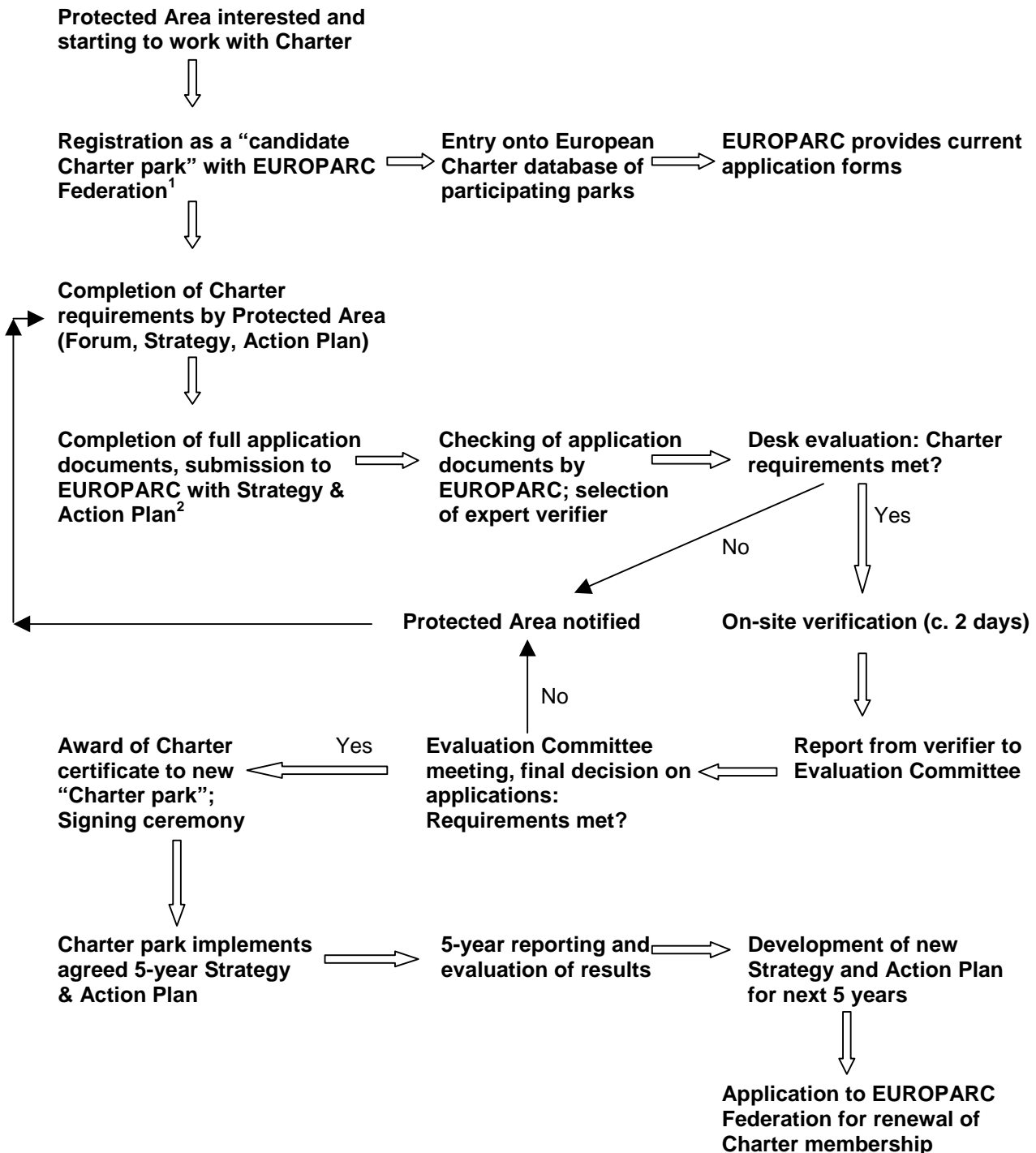


Flowchart – Application and verification process

European Charter for Sustainable Tourism



¹ A protected area is required to be a **member of the EUROPARC Federation** in order to join the Charter. If the protected area is not a EUROPARC member by this stage, it will be required to join the Federation upon registration and before applying for Charter verification.

² The period between registration as a candidate Charter park and submission of the full application will generally be at least 1 year (to enable satisfactory completion of the Charter requirements). The number of applications which can be accepted and processed in any one year is limited. For this reason it is important that Protected Areas register with the EUROPARC Federation as soon as they start to work with the Charter, providing an estimate as to when they expect to complete their Strategy and Action Plan.