

# **New Forest National Park Local Development Framework**



## **Local Development Scheme January 2007**

**This Local Development Scheme sets out the New Forest National Park Authority's three year programme for the preparation of the individual documents which will form the New Forest National Park Local Development Framework**

## CONTENTS

	Page
1. Introduction	3
2. Hierarchy of policy and plan-making	5
3. Programme for Local Development Documents	7
4. Transitional Period – ‘Saved’ Policies	9
5. Sustainability Appraisal and Strategic Environment Assessment	10
6. Programme for Preparing Local Development Documents – Table	11
7. Schedule of Proposed Local Development Documents – Table	12
8. Local Development Document Profiles	15
9. Evidence Base	24
10. Risk Assessment	25
11. Arrangements for Monitoring and Review	26
12. Glossary and Abbreviations	27
Annex A – Schedule of saved policies	29

## **New Forest National Park Authority Local Development Scheme**

### **1 Introduction**

1.1 The designation of the New Forest National Park was confirmed in March 2005 and the National Park Authority assumed its full planning responsibilities on 1 April 2006. The Authority's role is to ensure that the two purposes of National Park designation are achieved. These purposes, common to all National Parks are:

- to conserve and enhance the natural beauty, wildlife and cultural heritage of the Park; and
- to promote opportunities for the understanding and enjoyment of the Park's special qualities by the public.

In doing this the Authority is required to seek to foster the economic and social well-being of local communities within the National Park.

1.2 The Authority is responsible for spatial planning, minerals and waste planning, development control and enforcement and other related regulatory functions within the National Park. The Authority is also required to produce a Management Plan for the National Park. This establishes the long term vision, aims and strategic policy framework for the National Park and will guide the work of the Authority and all the other organisations that contribute to the delivery of the National Park purposes. The preparation of the Local Development Framework for the New Forest National Park will be integrated wherever possible with the development of the National Park Management Plan.

1.3 The New Forest National Park covers parts of New Forest District, Test Valley Borough and Salisbury District, including land within the counties of Hampshire and Wiltshire (see indicative map overleaf).



## **2 Hierarchy of policy and plan-making**

### *Government guidance*

- 2.1 At national level, the Government is revising its planning advice by replacing Planning Policy Guidance Notes (PPGs) with shorter Planning Policy Statements (PPSs). Government policy must be reflected in the policies contained in regional and local planning documents.

### *Regional Spatial Strategy*

- 2.2 Similarly, planning policies set out in the Regional Spatial Strategy should be reflected in the New Forest National Park Authority's planning policy documents. For planning purposes, the emerging South East Plan is the Regional Spatial Strategy covering the New Forest National Park. The weight to be attached to the Regional Spatial Strategy depends on the stage it has reached. On 31 March 2006 the Regional Assembly submitted the draft South East Plan for Government approval. Once the Regional Spatial Strategy has been through the Examination in Public and the proposed changes have been published, considerable weight will be attached to the Strategy. The draft Plan sets out a broad planning framework for the region, including a section on South Hampshire and a specific policy for the New Forest National Park. Once the emerging South East Plan has Government approval it will replace the Regional Planning Guidance for the South East (RPG9). The New Forest National Park Authority must also have regard to the proposals contained in the emerging South West Regional Spatial Strategy.

### *Local Development Framework*

- 2.3 Each local planning authority is required to produce a Local Development Framework. The New Forest National Park Local Development Framework will contain a suite of planning documents designed to help deliver the statutory purposes and duty of the National Park and the vision and policies set out in the National Park Management Plan. The 'development plan' for the New Forest National Park will consist of the Regional Spatial Strategy for the South East and development plan documents (including minerals and waste development plan documents) prepared by the National Park Authority.

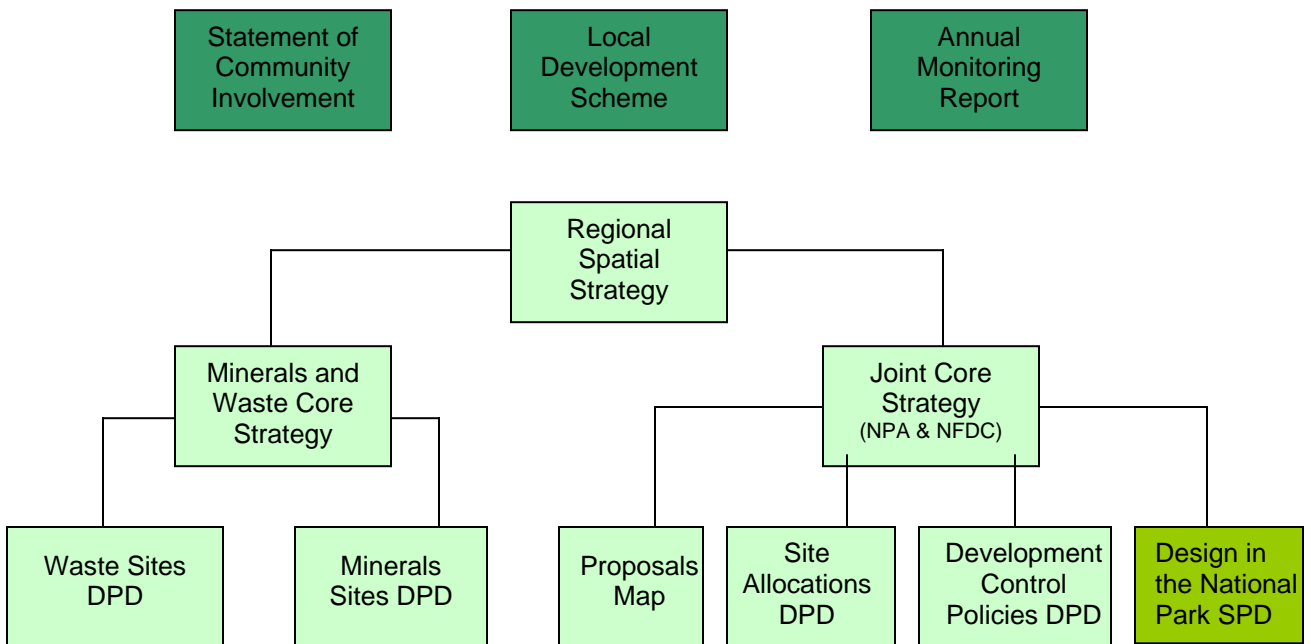
### *Other relevant strategies, plans, statements and guidance*

- 2.4 Work on preparing local development documents will take full account of other relevant strategies and plans, having regard to conformity requirements. The intention is to integrate the preparation of the Core Strategy with the review of the National Park Management Plan and the Sustainable Community Strategy for New Forest District. Other relevant strategies and plans that will be taken into account include:

- the emerging Regional Spatial Strategy for the South East
- Planning Policy Guidance Notes and Planning Policy Statements
- the Strategy for the New Forest (2003) – adopted as the interim National Park Management Plan.
- the Sustainable Community Strategies prepared by New Forest District Council, Test Valley Borough Council and Salisbury District Council that include land within the National Park.

### 3 Programme for Local Development Documents

- 3.1 This Scheme sets out the Authority’s work programme for the next three years. The programme takes account of the need for community consultation (guided by the Authority’s emerging Statement of Community Involvement) and Sustainability Appraisal and has been prepared in consultation with New Forest District Council.
- 3.2 The programme for further local development documents will be set out in future revisions to the Local Development Scheme.
- 3.3 Initially the Authority is proposing to prepare six Development Plan Documents (DPDs), and seeks to work in partnership with other planning authorities in the region in their production. The preparation of joint documents is encouraged in Planning Policy Statement 12 (*Local Development Frameworks*, ODPM, 2004) and this Scheme assumes a significant amount of joint working. At the local level this involves joint working between the National Park Authority and New Forest District Council, and with Hampshire County Council, Portsmouth City Council and Southampton City Council on the development of minerals and waste planning policies at the county level.



Key	
Development Plan Documents	
Other Local Development Documents	
Supplementary Planning Document	

- 3.4 The proposed timetable for producing local development documents:
- takes advantage of the availability of relatively up-to-date policies in the various Local Plans;
  - responds to current public and member concerns and priorities about key issues;
  - complies with government requirements for putting the Statement of Community Involvement and Core Strategy in place as soon as possible;
  - takes note of government guidance supporting the principle of joint working with neighbouring local planning authorities to save on resources and share expertise;
  - spreads the Policy and Plans team's work as evenly as practicable.
- 3.5 The proposed joint Core Strategy will establish the broad spatial strategy for the New Forest National Park and the surrounding areas in New Forest District. It will include generic development control policies. Production of this document will be integrated with the review of the New Forest National Park Management Plan and the Sustainable Community Strategy.
- 3.6 The joint Core Strategy will also provide the framework for the preparation of other local development documents. The Transport Development Plan Document and the Sites and Designations Development Plan Document are programmed to follow on as closely as possible from the Core Strategy, because it is important that strategic issues are resolved through the Core Strategy.
- 3.7 The programme for further local development documents will be established in future reviews of the Local Development Scheme. This is likely to include an area action plan that addresses the need to protect back-up grazing land which extends beyond the New Forest National Park boundaries into New Forest District, Test Valley Borough, Salisbury District and Christchurch Borough. Initial discussions between the National Park Authority and the relevant neighbouring authorities will need to take place before this can be programmed into future reviews of the respective Local Development Schemes.

## **4 Transitional period – ‘Saved’ Policies**

4.1 Under the Act, there is a period of transition from the previous development plan system to the new system. The policies of existing development plans are automatically ‘saved’ for a period of three years, or for longer as set out below. The situation within the New Forest National Park is complicated by the number of plans and policies inherited by the National Park Authority when it assumed its full planning responsibilities in April 2006. The relevant plans from which policies will be saved under the transitional arrangements are:

- The Hampshire Structure Plan Review 1996-2011 (adopted 2000)
- The Wiltshire and Swindon Structure Plan 2016 (adopted 2006)
- The Hampshire, Portsmouth and Southampton Minerals and Waste Local Plan (adopted 1998)
- The Wiltshire and Swindon Waste Local Plan (adopted 2005)
- The Wiltshire and Swindon Minerals Local Plan (adopted 2001)
- The New Forest District Council Local Plan First Alteration (adopted 2005)
- The Test Valley Borough Local Plan Review 2001-2011 (adopted July 2006)
- The Salisbury District Local Plan (adopted 2003).

4.2 The Regional Spatial Strategy for the South East and the development plan documents prepared by the National Park Authority will gradually replace the saved development plans for the National Park area. The weight to be attached to the draft Regional Spatial Strategy depends on the stage it has reached. It is not proposed that for each currently saved policy there will be a corresponding replacement policy in the Local Development Framework. Annex A sets out the detailed schedule of policies within the Plans outlines above, and identifies whether these will be replaced in a Local Development Document or not carried forward.

### *Structure Plan Policies*

4.3 Subject to the approval of the Secretary of State, the policies and proposals contained in the Hampshire Structure Plan Review 1996–2011 and the Wiltshire and Swindon Structure Plan 2016 will be saved until the Regional Spatial Strategy for the South East is adopted, currently timetabled for February 2008. This will replace the Structure Plan policies that currently cover the New Forest National Park.

### *Minerals and Waste Local Plans*

4.4 The minerals and waste policies and proposals contained in the saved Hampshire, Portsmouth and Southampton Minerals and Waste Local Plan

(1998); the Wiltshire and Swindon Waste Local Plan (2005) and the Wiltshire and Swindon Minerals Local Plan (2001) will be saved until the Hampshire Minerals and Waste Core Strategy is adopted. This is currently timetabled for July 2007. This document will cover the whole of the New Forest National Park (including the part of the Park in Wiltshire) and once adopted will provide a consistent approach to minerals and waste planning within the National Park.

#### *District/Borough Local Plans*

- 4.6 The New Forest National Park is covered by three inherited Local Plans, which are automatically saved for three years (the end date depends on their date of adoption, which ranges from June 2003 to July 2006). Given that the New Forest National Park Authority only assumed its full planning responsibilities in April 2006, the Authority is seeking to save the Local Plans until the proposed replacement local development documents have been adopted, which will extend beyond the three year period.
- 4.7 The Authority is aiming to provide a consistent planning policy framework for the whole New Forest National Park as soon as is possible. However, the transition from the inherited plans, policies and supplementary planning guidance which currently cover the National Park to the new Local Development Framework system will take time. There is also a need to maintain sufficient continuity to guide development decisions in the interim period.

### **5 Sustainability Appraisal and Strategic Environmental Assessment**

- 5.1 As part of the preparation of each document, the Authority will undertake a Sustainability Appraisal and Strategic Environmental Assessment. This will:
- test policy options
  - collect baseline information
  - predict significant environmental effects
  - inform the public and interested organisations.
- 5.2 Sustainability Appraisal, incorporating the requirement of Strategic Environmental Assessment is a feedback process that informs policy options and also provides important information for the evidence base. Documents will be appraised to review their potential impact as each 'milestone' in their production is reached. Sustainability Appraisal will ensure that the preparation of local development documents has taken sustainable development principles into consideration. It will play an

important part in showing whether a document is 'sound', (i.e. has been properly prepared).



## 7. Local Development Scheme – Schedule of Proposed Local Development Documents

Document	Status	Role and content	Geographical coverage	Chain of conformity	Dates of consultation on Issues and Options	Dates for participation on preferred options / draft SPD and SA Report	Date for submission to Secretary of State	Proposed date for adoption
Statement of Community Involvement	Local Development Document	Sets out the Authority's policies for community involvement	New Forest National Park	Town and Country Planning (Local Development) (England) Regulations	April – May 2006	June – July 2006  (SA Report not required)	October 2006	April 2007
Core Strategy	DPD	Sets out the vision, objectives and spatial strategy for the National Park (and New Forest District)	New Forest National Park and New Forest District	Consistent with national planning policy and emerging South East Plan, also RPG9	November 2006 - January 2007	September – October 2007	May 2008	May 2009
Development Control Policies DPD	DPD	Sets out the development control policies for the National Park	New Forest National Park	Consistent with national planning policy and emerging South East Plan	September – October 2007	May – June 2008	January 2009	February 2010
Sites Allocations and	DPD	To allocate sites for development,	New Forest National Park and New	Core Strategy	September – October 2007	May – June 2008	January 2009	February 2010

**7. Local Development Scheme – Schedule of Proposed Local Development Documents**

Document	Status	Role and content	Geographical coverage	Chain of conformity	Dates of consultation on Issues and Options	Dates for participation on preferred options / draft SPD and SA Report	Date for submission to Secretary of State	Proposed date for adoption
Designations DPD		open space and community needs, and review local designations.	Forest District					
Hampshire Minerals and Waste Core Strategy	DPD	Sets out objectives and spatial development strategy for Hampshire; provides development control framework	Hampshire, including the National Park, Southampton and Portsmouth	General conformity with national and regional policy, including emerging South East Plan	Completed – ran until March 2005	Completed – ran from September – November 2005	May 2006	July 2007
Hampshire Minerals and Waste Core Strategy (Wiltshire catch-up)	DPD	Extending Core Strategy for Hampshire to the whole of the Park	Hampshire and whole of the New Forest National Park	As above	June 2006 – July 2006	August – early October 2006	October 2006	July 2007
Hampshire Minerals Sites	DPD	Detailed policies and potential sites for future	Hampshire, including the National Park, Southampton	Hampshire Minerals and Waste Core Strategy and	Completed – ran to October 2006	April – May 2007	October 2007	December 2008

**7. Local Development Scheme – Schedule of Proposed Local Development Documents**

Document	Status	Role and content	Geographical coverage	Chain of conformity	Dates of consultation on Issues and Options	Dates for participation on preferred options / draft SPD and SA Report	Date for submission to Secretary of State	Proposed date for adoption
		minerals extraction	and Portsmouth	South East Plan				
Hampshire Waste Management Sites	DPD	Detailed policies and potential sites for resource management	Hampshire, including the National Park, Southampton and Portsmouth	Hampshire Minerals and Waste Core Strategy and emerging South East Plan	Completed – ran to October 2006	April - May 2007	October 2007	December 2008
Design in the National Park	SPD	Detailed design guidance	New Forest National Park	Core Strategy and Development Control Policies DPD	n/a	November 2007 – January 2008	n/a	April 2008

## 8 Local Development Document Profiles

### Statement of Community Involvement

Role and content	Sets out the National Park Authority's policies for involving the community in the preparation of local development documents and planning applications	
Status	Local Development Document	
Chain of conformity	Town and Country Planning (Local Development) (England) Regulations 2004	
Geographic coverage	New Forest National Park	
<b>Timetable</b>		
Milestones	Pre-Production	January – March 2006
	Community involvement as required by Regulation 25	April – May 2006
	Public participation on draft statement	June – July 2006
	Preparation of submission statement	August – September 2006
	Submission of statement to Secretary of State	October 2006
	Pre-examination consideration of responses	October – November 2006
	Pre-examination meeting (if required)	December 2006
	Examination period	January 2007
	Receipt of Inspector's binding report	March 2007
	Adoption and publication	April 2007
<b>Arrangements for production and review</b>		
Who is leading the production of the document?	Policy and Plans Team – New Forest National Park Authority	
Management arrangements	Approval required at each milestone by the full National Park Authority	
Resources	Policy and Plans Team – New Forest National Park Authority	
External community involvement	Set out in the SCI	
Monitoring and review mechanisms	Annual Monitoring Report	

### Core Strategy Development Plan Document

Role and content	The joint Core Strategy with New Forest District Council will set out the vision, objectives and spatial strategy, and provide the framework for the preparation of other Development Plan Documents. Will also include an annex of relevant criteria-based development control policies needed to achieve the strategy.	
Status	Development Plan Document (DPD)	
Chain of conformity	The emerging Regional Spatial Strategy for the South East. Regard will also be had to the existing Regional Planning Guidance (RPG9), Hampshire County Structure Plan Review, the Interim National Park Management Plan, the Community Strategies covering the National Park and other relevant strategies.	
Geographic coverage	New Forest National Park and New Forest District. Evidence gathering will be integrated with the preparation of the National Park Management Plan and the review of the new Forest District Community Strategy.	
<b>Timetable</b>		
Milestones	Pre-Production period	January 2006 – October 2006
	Preparation of issues and options and initial SA Report	November 2006 – January 2007
	Public participation on preferred options document and SA Report	September - October 2007
	Consideration of representations	November 2007 - January 2008
	Preparation of submission DPD and SA Report	February – May 2008
	Submission of DPD and SA Report to Secretary of State	May 2008
	Consultation on submission DPD and SA Report	May – June 2008
	Pre-examination consideration of responses	June – November 2008
	Pre-examination meeting	August 2008
	Examination Period	November 2008
	Receipt of Inspector's binding report	April 2009
	Adoption of document and revised Proposals Map	May 2009
<b>Arrangements for production and review</b>		
Who is leading the production of the document?	Joint production - Policy and Plans Teams from NPA and NFDC	
Management arrangements	Approval required by full New Forest National Park Authority. Economy and Planning Review Panel / Cabinet – New Forest District Council.	
Resources	Policy and Plans Teams at the Authority and NFDC, external consultants where required	
External community involvement	Statutory consultation taking into account Statement of Community Involvement	
Monitoring and review mechanisms	Annual Monitoring Report	

### Development Control Policies Development Plan Document

Role and content	To provide detailed development control policies for the New Forest National Park.	
Status	Development Plan Document (DPD)	
Chain of conformity	Core Strategy and the Regional Spatial Strategy for the South East.	
Geographic coverage	New Forest National Park.	
<b>Timetable</b>		
Milestones	Pre-Production period	January – October 2007
	Preparation of issues and options and initial SA Report	September – October 2007
	Public participation on preferred options document and SA Report	May – June 2008
	Consideration of representations	July – September 2008
	Preparation of submission DPD and SA Report	October – December 2008
	Submission of DPD and SA Report to Secretary of State	January 2009
	Consultation on submission DPD and SA Report	January – February 2009
	Pre-examination consideration of responses	March – July 2009
	Pre-examination meeting	April 2009
	Examination period	July 2009
	Receipt of Inspector's binding report	December 2009
	Adoption of document and revised Proposals Map	February 2010
<b>Arrangements for production and review</b>		
Who is leading the production of the document?	National Park Authority's Policy and Plans Teams.	
Management arrangements	Approval required by full New Forest National Park Authority.	
Resources	Policy and Plans Teams at the National Park Authority, external consultants where required	
External community involvement	Statutory consultation taking into account Statement of Community Involvement	
Monitoring and review mechanisms	Annual Monitoring Report	

## Sites Allocations and Designations Development Plan Document

Role and content	To allocate sites for development, open space and community needs and to review local designations (e.g. sites of importance for nature conservation).	
Status	Development Plan Document (DPD)	
Chain of conformity	Core Strategy	
Geographic coverage	New Forest National Park and New Forest District	
<b>Timetable</b>		
Milestones	Pre-Production Period	January 2007 – October 2007
	Preparation of issues and options and initial SA Report	September 2007 – October 2008
	Public participation on preferred options document and SA Report	May 2008– June 2008
	Consideration of representations	July 2008 – September 2008
	Preparation of submission DPD and SA Report	October 2008 – December 2008
	Submission of DPD and SA Report to Secretary of State	January 2009
	Consultation on submission DPD and SA Report	January – March 2009 (taking into account Reg. 32 and 33 consultation)
	Pre-examination consideration of responses	March – July 2009
	Pre-examination meeting	April 2009
	Examination period	July 2009
	Receipt of Inspector's binding report	December 2009
	Adoption of document and revised proposals map	February 2010
<b>Arrangements of production and review</b>		
Who is leading the production of the document?	National Park Authority – Policy and Plans Team, NFDC – Policy and Plans Team	
Management arrangements	Approval required by full New Forest National Park Authority. Economy and Planning Review Panel / Leisure Review Panel, Cabinet – New Forest District Council.	
Resources	Policy and Plans Teams at the Authority and NFDC, external consultants where required	
External community involvement	Statutory consultation taking into account Statement of Community Involvement	
Monitoring and review mechanisms	Annual Monitoring Report	

### Hampshire Minerals and Waste Core Strategy

Role and content	The Core Strategy will set out the vision and strategy for mineral provision and resource management in Hampshire. Objectives, core policies and the monitoring and implementation frameworks will flow from this Core Strategy	
Status	Development Plan Document (DPD)	
Chain of conformity	General conformity with national and regional policy including Planning Policy Statements and Planning Policy Guidance Notes, Mineral Planning Statements and Mineral Planning Guidance Notes and the emerging Regional Spatial Strategy	
Geographic coverage	The administrative areas of Hampshire, Portsmouth, Southampton and the New Forest National Park	
<b>Timetable</b>		
Milestones	Pre-Production Period	Completed March 2005
	Preparation of issues and options and initial SA Report	Completed March 2005
	Public participation on preferred options document and SA Report	Completed October 2005
	Consideration of representations	Completed February 2006
	Preparation of submission DPD and SA Report	Completed February 2006
	Submission of DPD and SA Report to Secretary of State	May 2006
	Consultation on submission DPD and SA Report	May – June 2006
	Pre-examination consideration of responses	June – September 2006
	Pre-examination meeting	October 2006
	Examination period	January – February 2007
	Receipt of Inspector's binding report	June 2007
	Adoption of document and revised Proposals Map	July 2007
<b>Arrangements for production and review</b>		
Who is leading the production of the document?	Authority – Policy and Plans Team; Hampshire C.C. – Minerals and Waste Planning Group; Portsmouth C.C. – Planning Policy; Southampton C.C. – Planning and Sustainability Division	
Management arrangements	Approval required by full National Park Authority. Input from joint (Hampshire, Portsmouth, Southampton and New Forest National Park) Member Steering Group	
Resources	Existing staff resources and consultants, as required	
External community involvement	Statutory consultation taking into account Statement of Community Involvement	
Monitoring and review mechanisms	Annual Monitoring Report	

### Hampshire Minerals and Waste Core Strategy (Wiltshire part)

It is proposed to extend the coverage of the submitted Hampshire Minerals and Waste Core Strategy (covering the Hampshire part of the National Park) to cover the part of the Park in Salisbury District, Wiltshire. This necessitates 'catch-up' consultation being carried out for the Wiltshire communities, ensuring that they have the statutory periods to comment before the examination into the Hampshire Minerals and Waste Core Strategy starts in late January 2007, the timetable for which is set out below.

Role and content	The Core Strategy will set out the vision and strategy for mineral provision and resource managed in Hampshire. This consultation will extend the Core Strategy into the small part of the National Park within Salisbury District, Wiltshire.	
Status	Development Plan Document (DPD)	
Chain of conformity	General conformity with national and regional policy and the emerging Regional Spatial Strategy	
Geographic coverage	Hampshire and whole of the New Forest National Park (including the area within Salisbury District, Wiltshire)	
<b>Timetable</b>		
Milestones	Pre-Production Period	Completed by June 2006
	Preparation of issues and options and initial SA Report	June - July 2006
	Public participation on preferred options document and SA Report	August 2006 – early October 2006
	Consideration of representations	October 2006
	Preparation of submission DPD and SA Report	October 2006
	Submission of DPD and SA Report to Secretary of State	October 2006
	Consultation on submission DPD and SA Report	Late October 2006 – December 2006
	Pre-examination consideration of responses	December 2006
	Pre-examination meeting	October 2006
	Examination period	January – February 2007
	Receipt of Inspector's binding report	June 2007
	Adoption of document and revised Proposals Map	July 2007
<b>Arrangements for production and review</b>		
Who is leading the production of the document?	Policy and Plans Team at the NPA;	
Management arrangements	Approval required by full National Park Authority.	
Resources	Existing staff resources and consultants, as required	
External community involvement	Statutory consultation taking into account Statement of Community Involvement	
Monitoring and review mechanisms	Annual Monitoring Report	

## Hampshire Waste Management Sites Development Plan Document

Role and content	Spatial expression of preferred options for waste management, based on the Core Strategy. It will provide spatial detail of resource management areas/sites, with site specific policies and maps as required. Proposals Map to be updated once adopted.	
Status	Development Plan Document (DPD)	
Chain of conformity	General conformity with national, regional policy, and the Core Strategy including Planning Policy Statements and Planning Policy Guidance Notes, Mineral Planning Statements and Mineral Planning Guidance Notes and the emerging Regional Spatial Strategy	
Geographic coverage	The administrative areas of Hampshire, Portsmouth, Southampton and the New Forest National Park (including the Wiltshire part of the Park)	
<b>Timetable</b>		
Milestones	Pre-Production Period	September 2005 – May 2006
	Preparation of issues and options and initial SA Report	September 2005 – Winter 2006
	Public participation on preferred options document and SA Report	April – May 2007
	Consideration of representations	May – October 2007
	Preparation of submission DPD and SA Report	May – October 2007
	Submission of DPD and SA Report to Secretary of State	October 2007
	Consultation on submission DPD and SA Report	October – December 2007 and January – February 2008
	Pre-examination consideration of responses	November 2007 – May 2008
	Pre-examination meeting	January 2008
	Examination period	June – July 2008
	Receipt of Inspector's binding report	October 2008
	Adoption of document and revised Proposals Map	December 2008
<b>Arrangements for production and review</b>		
Who is leading the production of the document?	Authority – Policy and Plans Team; Hampshire C.C. – Minerals and Waste Planning Group; Portsmouth C.C. – Planning Policy; Southampton C.C. – Planning and Sustainability Division	
Management arrangements	Approval required by full National Park Authority. Input from joint (Hampshire, Portsmouth, Southampton and New Forest National Park) Member Steering Group	
Resources	Existing staff resources and consultants, as required	
External Community Involvement	Statutory consultation taking into account Statement of Community Involvement	
Monitoring and review mechanisms	Annual Monitoring Report	

## Hampshire Minerals Sites Development Plan Document

Role and content	Provides detailed sites and locations for mineral supply and extraction and landfill, based on the Core Strategy. It will provide spatial detail of minerals areas/sites, with site specific policies and maps as required. Proposals Map to be updated once adopted.	
Status	Development Plan Document (DPD)	
Chain of conformity	General conformity with national, regional policy, and the Core Strategy including Planning Policy Statements and Planning Policy Guidance Notes, Mineral Planning Statements and Mineral Planning Guidance Notes and the emerging Regional Spatial Strategy	
Geographic coverage	The administrative areas of Hampshire, Portsmouth, Southampton and the New Forest National Park (including the Wiltshire part of the Park)	
<b>Timetable</b>		
Milestones	Pre-Production Period	September 2005 – May 2006
	Preparation of issues and options and initial SA Report	September 2005 – Winter 2006
	Public participation on preferred options document and SA Report	April – May 2007
	Consideration of representations	May – October 2007
	Preparation of submission DPD and SA Report	May – October 2007
	Submission of DPD and SA Report to Secretary of State	October 2007
	Consultation on submission DPD and SA Report	October – December 2007 and January – February 2008
	Pre-examination consideration of responses	November 2007 – May 2008
	Pre-examination meeting	January 2008
	Examination period	June – July 2008
	Receipt of Inspector's binding report	October 2008
	Adoption of document and revised Proposals Map	December 2008
<b>Arrangements of production and review</b>		
Who is leading the production of the document?	Authority – Policy and Plans Team; Hampshire C.C. – Minerals and Waste Planning Group; Portsmouth C.C. – Planning Policy; Southampton C.C. – Planning and Sustainability Division	
Management arrangements	Approval required by full National Park Authority. Input from joint (Hampshire, Portsmouth, Southampton and New Forest National Park) Member Steering Group	
Resources	Existing staff resources and consultants, as required	
External community involvement	Statutory consultation taking into account Statement of Community Involvement	
Monitoring and review mechanisms	Annual Monitoring Report	

### Design in the National Park Supplementary Plan Document

Role and content	To produce design guidance for new development in New Forest National Park	
Status	Supplementary Plan Document (SPD)	
Chain of conformity	General conformity with national, regional policy, and the Core Strategy including Planning Policy Statements and Planning Policy Guidance Notes, and the emerging Regional Spatial Strategy	
Geographic coverage	The administrative areas of the New Forest National Park	
<b>Timetable</b>		
Milestones	Pre-Production Period	March – June 2007
	Preparation of draft SPD and SA Report	July – October 2007
	Public participation on draft SPD and SA Report	November 2007 – January 2008
	Consideration of representations	February – March 2008
	Adoption and publication of SPD	April 2008
<b>Arrangements of production and review</b>		
Who is leading the production of the document?	National Park Authority's Environmental Design Team;	
Management arrangements	Approval required by full National Park Authority.	
Resources	Existing staff resources and consultants, as required	
External community involvement	Statutory consultation taking into account Statement of Community Involvement	
Monitoring and review mechanisms	Annual Monitoring Report	

## 9 Evidence base

9.1 A key requirement for preparation of documents is a complete, robust and up-to-date evidence base to underpin the strategy and policies. The adequacy and 'soundness' of the evidence base is one of the factors that the Secretary of State will take into account in assessing this Scheme.

9.2 The New Forest National Park Authority is a new authority and has to assimilate a large amount of information from existing local planning authorities and from statutory bodies and other stakeholders. The evidence base will develop over time as the Authority becomes more established, but it is likely to include the following listed below. The Authority is proposing to produce a number of joint documents and the evidence base will be jointly managed between the relevant authorities in these cases.

i) *Planning application system monitoring*

The Authority's application database will be used to measure performance in securing policy objectives in terms of the Authority's decision performance, appeal success and review of Inspectors decisions after a suitable period of time.

ii) *Checking saved policies against local, regional and national policies*

This will involve 'proofing' policies against evolving national and regional policy, circular advice, guidelines and good practice.

iii) *Census trends*

The 2001 Census has now been evaluated. Future planning policy will be informed by comparing the latest data with that contained in the 1991 Census. In addition, the mid year population estimates, migration trends and household projections will also inform policy, particularly housing policy.

iv) *Review of the National Park Management Plan*

A review of the *Strategy for the New Forest* – adopted as the interim National Park Management Plan - will commence in summer 2006, and every effort will be made to coordinate preparation work on that document with work on local development documents to ensure that the mutual benefits are maximised.

v) *State of the Park Report*

The National Park Authority intends to produce a State of the Park Report in 2006. This Report will provide baseline information on current conditions based on 15 indicators developed by the Countryside Agency. The State of the Park Report will enable the National Park Authority to monitor relevant trends and focus on changes that affect the special qualities and character of the Park.

vi) *National Park Visitor Survey*

A comprehensive review of recreational activity has been undertaken in a project lead by the Forestry Commission which has included a survey of visitors commissioned by the Countryside Agency. Analysis of the survey results will provide useful information on the nature of visitors to the National Park.

vii) *Review of the Sustainable Community Strategies*

Sustainable Community Strategies of adjoining district and borough councils provide useful information which will help inform the drafting and review of Development Plan Documents.

viii) *Annual Monitoring Report*

Changes to local, national and regional strategies will be reviewed in this report. This will eventually prompt review of some of the saved policies in the Local Plans.

ix) *Sustainability Appraisal / Strategic Environmental Assessment data*

The baseline data compiled for the SA/SEA process provides a useful source of background information.

x) Specific studies, such as the analysis of the provision and likely future needs for public open space, sport and recreational facilities linked to PPG17.

## **10 Risk Assessment**

10.1 The main risk to the process is the potential failure to meet key stages set out in this Local Development Scheme. With current Plans being saved until they are replaced, this builds in some contingency. Progress will also be reviewed annually through the Annual Monitoring Report (see below).

- 10.2 Other risks include the potential for staff to leave before the end of the project plan together with failure rapidly to fill resulting vacancies. The National Park Authority is implementing a number of measures to improve staff retention (such as regular staff reviews) with the aim of overcoming this potential problem.
- 10.3 In terms of the capacity of the Authority's Policy and Plans team, where it would be more efficient to use external resources, or where information is seriously deficient and is not available from a partner agency, the Authority will consider the use of specialist consultancy. The National Park Authority also intends to pursue the joint production of a Core Strategy with the New Forest District Council, which should have resource benefits (e.g. joint examination and printing costs).
- 10.4 The National Park Authority is producing a number of documents jointly prepared with neighbouring authorities. While this brings benefits in terms of resource pooling and sharing of expertise, it also presents a number of risks. The main risk revolves around the timetabling for the production of joint documents and the potential for delays in one partner organisation impacting on the progress of the other partner. The failure to reach agreement on policies and proposals within joint documents may also delay progress against the Local Development Scheme targets. Close joint working and liaison between the planning authorities is therefore essential. This risk will be kept under review and only if absolutely necessary the Local Development Scheme would be amended to reflect any resultant delays.

## **11 Arrangements for monitoring and review**

- 11.1 The Authority proposes to produce an Annual Monitoring Report in December each year. This will be prepared in accordance with Government advice set out in the Monitoring Good Practice Guide (2005) and data compilation will be coordinated with New Forest District Council. This document will include an assessment of progress on preparation of the local development documents against the timetable and milestones set out in the Scheme and the extent to which Local Development Framework policies are being achieved. The monitoring report must be submitted to the Secretary of State for approval.

## 12 Glossary and abbreviations

<b>AMR</b>	<b>Annual Monitoring Report</b> Part of the Local Development Framework, this report will assess the implementation of the Local Development Scheme and the extent to which policies are being successfully implemented.
<b>Core Strategy</b>	The Core Strategy will set out the long term vision, objectives and spatial strategy, and provide the framework for the preparation of other Development Plan Documents
<b>Development Plan</b>	As set out in Section 38(6) of the Act, an authority's Development Plan consists of the relevant Regional Spatial Strategy and the Development Plan Documents contained within its Local Development Framework.
<b>DPD</b>	<b>Development Plan Document</b> Spatial planning documents which are subject to independent examination. Together with the Regional Spatial Strategy, they form the Development Plan for the area.
<b>LDD</b>	<b>Local Development Documents</b> The collective term for Development Plan Documents, Supplementary Planning Documents and the Statement of Community Involvement.
<b>LDF</b>	<b>Local Development Framework</b> The name for the portfolio of local development documents. It consists of Development Plan Documents, Supplementary Planning Documents, a Statement of Community Involvement, the Local Development Scheme and the Annual Monitoring Report.
<b>LDS</b>	<b>Local Development Scheme</b> Sets out the programme for preparing local development documents as part of the Local Development Framework.
<b>LSP</b>	<b>Local Strategic Partnership</b> Partnerships of stakeholders who develop ways of involving local people in shaping the future of their neighbourhood and how services are provided. They are often single, non-statutory, multi-agency bodies which aim to bring together locally the public, private, community and voluntary sectors.
<b>MPS</b>	<b>Minerals Planning Statement</b> Updated Government advice (gradually replacing Minerals Planning Guidance Notes)

<b>National Park Management Plan</b>	<b>National Park Management Plan</b> The National Park Management Plan seeks to guide the management of the National Park in a way which helps to achieve its statutory purposes and duty, improving the quality of life for those who live or work in the Park, or are visitors to it.
<b>PPG</b>	<b>Planning Policy Guidance Note</b> Government advice on planning matters
<b>PPS</b>	<b>Planning Policy Statement</b> Updated Government advice (gradually replacing PPGs)
<b>Proposals Map</b>	A map indicating the areas to which particular Local Development Framework policies or considerations apply. <u>It must be revised as each new Development Plan Document is adopted and should always reflect the up-to-date planning strategy for the area.</u>
<b>RSS</b>	<b>Regional Spatial Strategy</b> The Strategic Plan for the region produced by the Regional Assembly. In the case of the New Forest National Park, this is the emerging South East Plan.
<b>SCI</b>	<b>Statement of Community Involvement</b> Sets out the standards which the National Park Authority will achieve with regard to involving local communities in the preparation of local development documents and development control decisions.
<b>SEA</b>	<b>Strategic Environmental Assessment</b> Assessment of the broader environmental impacts of the policies and proposals contained within the Local Development Framework (in line with SEA Directive 2002)
<b>SPD</b>	<b>Supplementary Planning Document</b> Documents within the Local Development Framework which do not have development plan status but which are a material planning consideration in the determination of applications and appeals
<b>SA</b>	<b>Sustainability Appraisal</b> Tool for appraising policies to ensure they reflect sustainable development objectives (i.e. social, environmental and economic factors) and required to be undertaken for all local development documents.

## **Annex A: Schedule of Saved Policies**