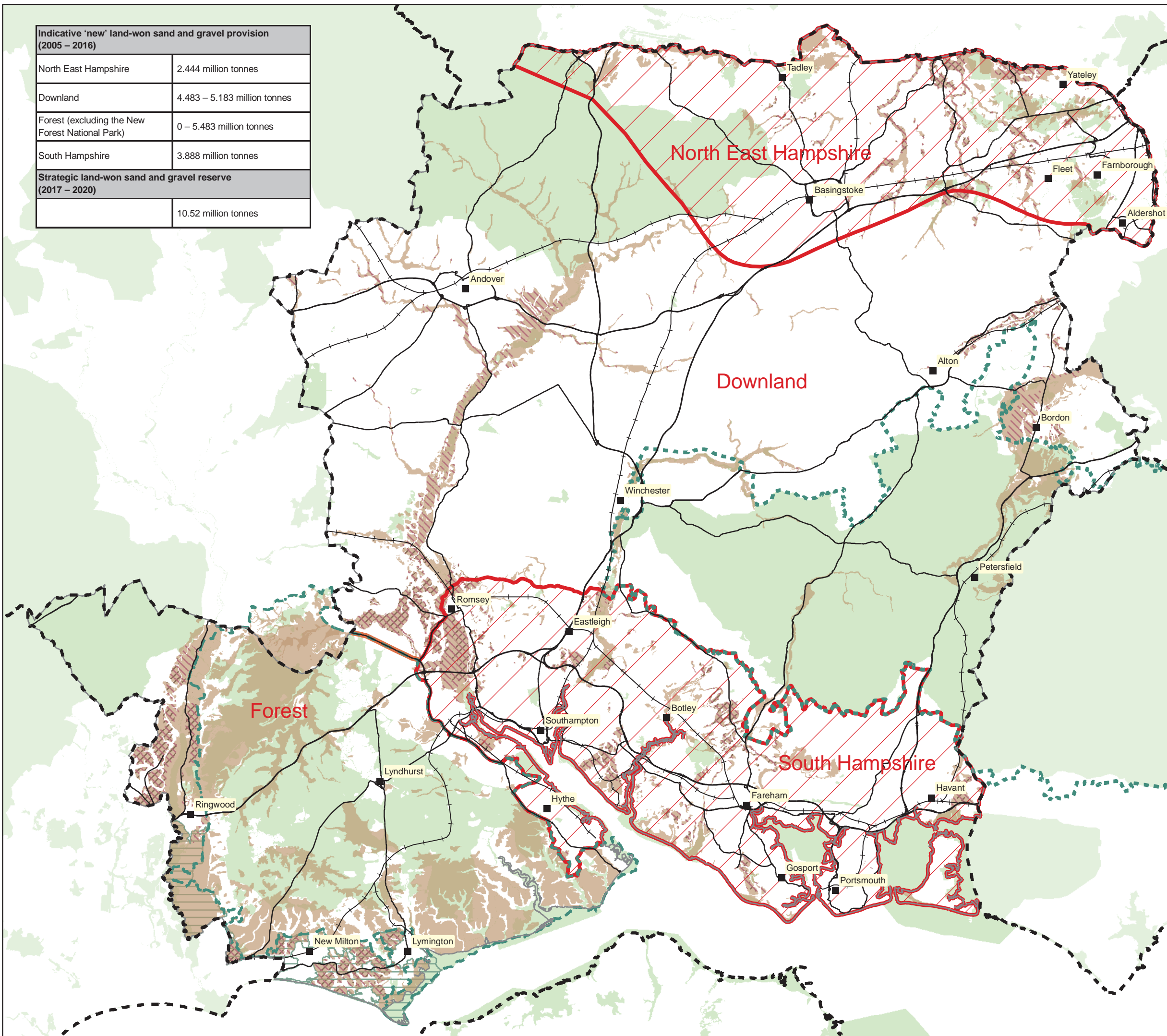


Appendix 5 - Key Diagram

Revised March 2007

Indicative 'new' land-won sand and gravel provision (2005 – 2016)	
North East Hampshire	2.444 million tonnes
Downland	4.483 – 5.183 million tonnes
Forest (excluding the New Forest National Park)	0 – 5.483 million tonnes
South Hampshire	3.888 million tonnes
Strategic land-won sand and gravel reserve (2017 – 2020)	
	10.52 million tonnes



Legend

- Minerals and Waste Lorry Routes
- +— Railway
- Town or City
- - - County Boundaries
- Policy Proposals**
- Safeguarded Sand and Gravel Deposits (Policy S15)
- ▨ Mineral Resource Area (Policy S6 & S8)
- ▨ Landfill Potential Area (Policy S6)
- ▨ Strategic facilities - Area of search (Policy S16)
- Constraints**
- International and National Environmental Constraints
- ▭ Green Belt - South West Hampshire
- ▭ New Forest National Park Boundary
- ▭ South Downs National Park Boundary (proposed)

This Key Diagram is illustrative. It should not be used to identify individual sites. The boundaries of the Safeguarded Sand and Gravel Deposits, Mineral Resources Area and Landfill Potential Areas will be defined on an Ordnance Survey base layer in the subsequent Hampshire Minerals Plan.



1:275,000

This map is reproduced from Ordnance Survey material with the permission of Ordnance Survey on behalf of the Controller of Her Majesty's Stationery Office © Crown copyright. Unauthorised reproduction infringes Crown copyright and may lead to prosecution or civil proceedings. HCC 100019180 2007

© Environment Agency copyright 2006. All rights reserved.

C06/055-CSL British Geological Survey. ©NERC. All rights reserved.