

# **New Forest National Park Authority Local Development Framework**



## **Local Development Scheme Third Revision**

**April 2011**

**This Local Development Scheme sets out the New Forest National Park Authority's three year programme for the preparation of the individual documents which will form the New Forest National Park Local Development Framework**

## CONTENTS

	Page
1. Introduction	3
2. Hierarchy of policy and plan-making	5
3. Programme for Local Development Documents	6
4. 'Saved' Policies	8
5. Sustainability Appraisal and Strategic Environmental Assessment	9
6. Programme for Preparing Local Development Documents – Table	10
7. Local Development Document Profiles	11
8. Evidence Base	15
9. Risk Assessment	17
10. Arrangements for Monitoring and Review	17
11. Glossary and Abbreviations	18
Annex A: Local Plan 'Saved' Policies	20

## New Forest National Park Authority Local Development Scheme

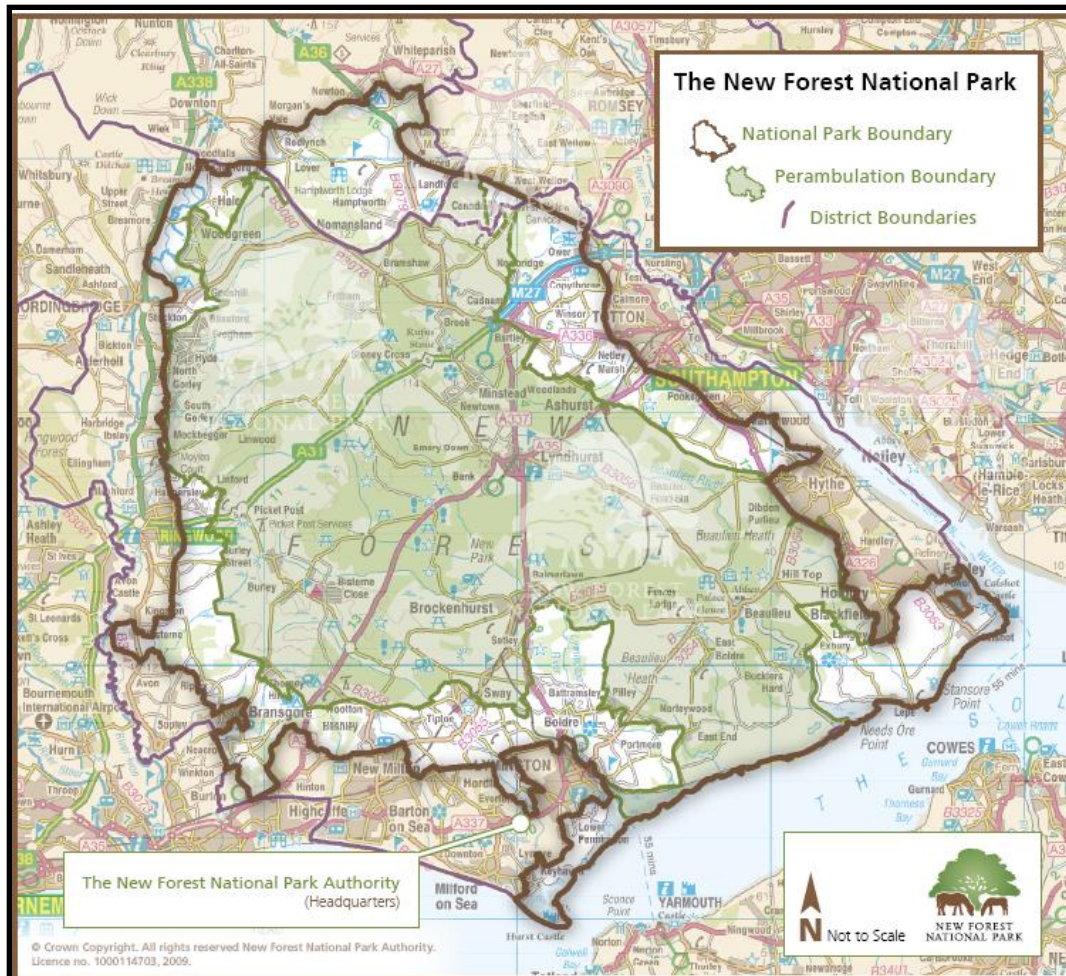
### 1. Introduction

1.1 The New Forest National Park was designated in March 2005 and the National Park Authority assumed its full planning responsibilities on 1 April 2006. The Authority's role is to ensure that the two purposes of National Park designation are achieved. These purposes, set out in the Environment Act 1995, are:

- to conserve and enhance the natural beauty, wildlife and cultural heritage of the Park; and
- to promote opportunities for the understanding and enjoyment of the Park's special qualities by the public.

In pursuing these purposes, the Authority is required to seek to foster the economic and social well-being of local communities within the Park.

1.2 The New Forest National Park covers parts of New Forest District, Test Valley Borough and Wiltshire Council, including land within the counties of Hampshire and Wiltshire (see indicative map below).



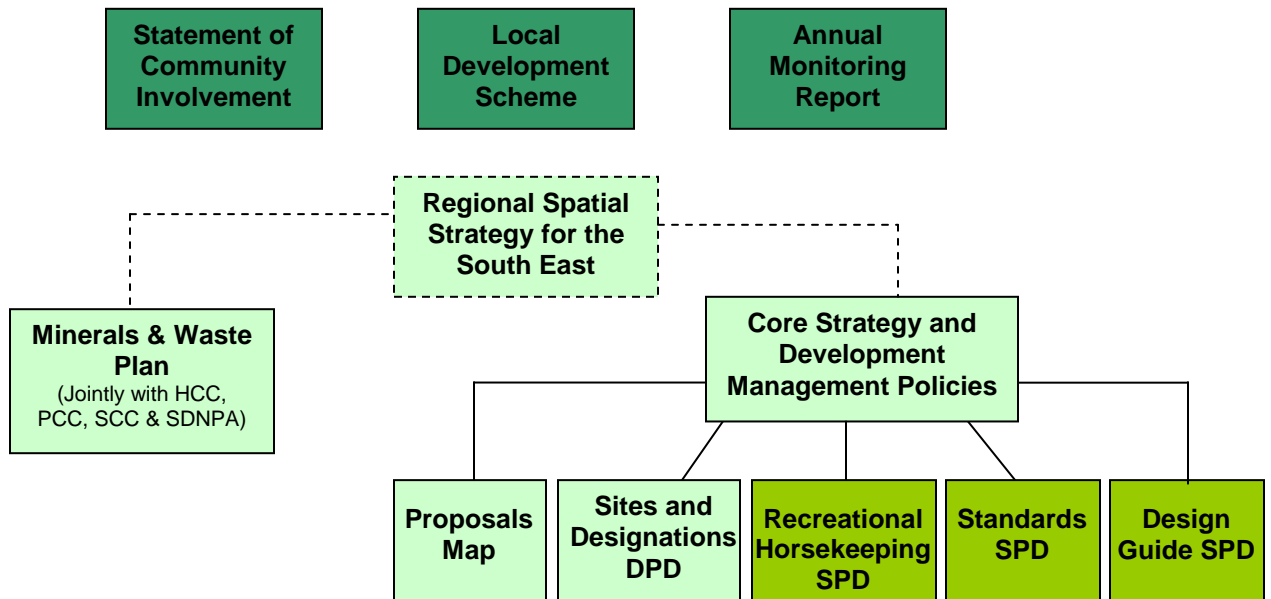
- 1.3 The National Park Authority is responsible for spatial planning, minerals and waste planning, development management, enforcement and other related regulatory functions within the National Park. Under Section 66(1) of the Environment Act 1995, the Authority is also required to prepare and publish a National Park Management Plan. This establishes the long term vision, aims and strategic policy framework for the National Park and will guide the work of the Authority and all the other organisations that contribute to the delivery of the National Park purposes. The New Forest National Park Management Plan is a five year plan, which was approved in December 2009 and published in early 2010.
- 1.4 The Authority is responsible for meeting the requirements on local planning authorities under the Planning and Compulsory Purchase Act, 2004. These include preparing and monitoring a Local Development Scheme to inform the public of the documents that will form the new planning policy framework, and set out a timetable for their preparation and review on a rolling programme.
- 1.5 The Authority adopted its first Local Development Scheme (LDS) in February 2007, with a second revision in December 2009, prepared in accordance with the Planning and Compulsory Purchase Act 2004. A number of documents outlined in these earlier LDS's have now been adopted, including the Statement of Community Involvement in March 2007, the Minerals and Waste Core Strategy in June 2007, and the Core Strategy and Development Management Policies in December 2010, and therefore no longer feature in this revision of the LDS.
- 1.6 Following the adoption of the Authority's Core Strategy in December 2010 the scope and timescales of subsequent documents has been reassessed and consequently a revised LDS is necessary. With particular regard to the minerals and waste local development framework it has been necessary to undertake further work on the evidence base in light of the review of the regional minerals apportionment and the successful legal challenge on the Minerals and Waste Core Strategy. It has been decided to incorporate strategic minerals and waste sites within a wider revision of the Core Strategy which will be titled the Hampshire Minerals and Waste Plan. Details of this are set out in Hampshire County Council's Minerals and Waste LDS, which can be viewed on their website.
- 1.7 This amended LDS sets out the Authority's latest timetable for the preparation of the Local Development Framework. Section 6 of the Scheme illustrates the proposed timetables for the production of local development documents, including consultation and the estimated date of adoption. Section 7 provides a more detailed profile of each document.

## **2. Hierarchy of policy and plan-making**

- 2.1 In preparing the Local Development Framework (LDF) the Authority must have regard to the Government's planning policy statements (PPGs and PPSs). Government policy must be reflected in the policies contained in the Local Development Framework, but should not be repeated verbatim within local policies.
- 2.2 Similarly, planning policies set out in the Regional Spatial Strategy should be reflected in the New Forest National Park Authority's planning policy documents. For planning purposes, the adopted South East Plan is the Regional Spatial Strategy covering the New Forest National Park. The Government has indicated that it intends to revoke all Regional Spatial Strategies upon enactment of the Localism Bill, which is currently progressing through Parliament. However, until such time the adopted South East Plan remains a statutory part of the 'development plan' for the National Park.
- 2.3 The New Forest National Park Local Development Framework will ultimately contain a suite of planning documents designed to help deliver the statutory National Park purposes and duty. The 'development plan' for the New Forest National Park currently comprises:
- the Core Strategy and Development Management Policies,
  - the Minerals and Waste Core Strategy
  - the South East Plan
  - a small number of 'saved policies' (see section 4)
- 2.4 Work on preparing the LDF will take full account of other relevant strategies and plans, having regard to conformity requirements, including:
- the Sustainable Community Strategies prepared by the constituent authorities of Hampshire and Wiltshire Counties; New Forest District Council, and Test Valley Borough Council;
  - adopted and emerging strategies for the National Park including the Recreation Management Strategy, Conservation Area Appraisals, the Landscape Strategy and the Biodiversity Action Plan; and
  - the Local Development Frameworks being prepared by neighbouring local planning authorities that could impact on the National Park.

### 3. Programme for Local Development Documents

- 3.1 This updated Scheme sets out the Authority’s work programme for the next three years, taking account of the need for community consultation (guided by the Authority’s adopted Statement of Community Involvement) and Sustainability Appraisal. The documents to be produced are set out in the diagram below.
- 3.2 The Authority is a minerals and waste planning authority and works in partnership with Hampshire County Council, Portsmouth and Southampton City Councils, and now the South Downs National Park Authority in the production of the minerals and waste Local Development Framework. This includes the preparation of the Hampshire Minerals and Waste Plan which will incorporate a wholesale review of the adopted Core Strategy and identification of a number of strategic sites for minerals and waste development. Details of this document, including the timetable, are set out in the Hampshire Minerals and Waste Local Development Framework Local Development Scheme and are not repeated here.
- 3.3 The Core Strategy and Development Management Policies DPD established the strategic and development management policies for the National Park and will also provide the framework for the preparation of other local development documents. This will include the Standards and the Design Guide Supplementary Planning Documents (SPD) which will both set out more detail of relevant policies in the Core Strategy DPD.



Development Plan Documents	
Other Local Development Documents	
Supplementary Planning Document	

- 3.4 In addition to the specific documents highlighted overleaf the Authority will also be adopting Village Design Statements (VDS) as Supplementary Planning Documents. A number of these have been produced or are in preparation at the current time. However, as they are produced by the parish and town councils themselves the timescales for any future VDSs are not within the Authority's control and have therefore not been set out in this Local Development Scheme.
- 3.5 The programme for further local development documents will be established in future reviews of the Local Development Scheme.

*Proposals Map*

- 3.6 A Proposals Map is required to reflect the content of the Authority's development plan documents. The Authority's adopted Proposals Map illustrates those geographical components of a number of policies in the adopted Core Strategy and Development Management Policies DPD, and will be subsequently revised, if necessary, when the Sites and Designations DPD is submitted, to reflect any changes to policies, designations and any proposed site allocations.

#### **4. 'Saved' Policies**

- 4.1 Under the Planning and Compulsory Purchase Act 2004, there is a period of transition from the previous Local Plan system to the new system. Policies in existing development plans can be 'saved' until a future date. The New Forest National Park Authority inherited a number of local and structure plans when it assumed its full planning responsibilities in April 2006, most of which have now been superseded by the adoption of the Core Strategy and Development Management Policies and the Minerals and Waste Core Strategy.
- 4.2 However, there remains a small number of 'saved policies', which are likely to be superseded by future planning documents produced by the Authority. Annex A sets out the detailed schedule of policies within the Plans outlined above, and identifies whether these will be replaced in a Local Development Document or not carried forward.

##### *District/Borough Local Plans*

- 4.3 Upon adoption of the Authority's Core Strategy only one policy from the three district local plans that previously covered the New Forest National Park has been saved, and this is set out in Annex A.

##### *Minerals and Waste Local Plans*

- 4.4 The Hampshire, Portsmouth, Southampton and New Forest National Park Minerals and Waste Core Strategy was adopted in June 2007. This document, which covers the whole of the National Park (including the small area within Wiltshire), replaces most of the policies in the previous minerals and waste plans covering the National Park.

## **5. Sustainability Appraisal and Strategic Environmental Assessment**

- 5.1 As part of the preparation of each development plan document (DPD), the Authority will undertake a Sustainability Appraisal and Strategic Environmental Assessment, in addition to a Habitats Regulations Assessment, to:
- test policy options;
  - collect or update baseline information;
  - predict significant environmental effects; and
  - inform the public and interested organisations
- 5.2 Sustainability Appraisal, incorporating the requirement of Strategic Environmental Assessment is a feedback process that informs policy options and also provides important information for the evidence base. Sustainability Appraisal will ensure that the preparation of local development documents has taken sustainable development principles into consideration. It will play an important part in showing whether a document is 'sound', (i.e. has been properly prepared).
- 5.3 A Sustainability Appraisal was undertaken for the Authority's adopted Core Strategy and the final report was published in January 2010. Prior to subsequent development plan documents (DPDs) the baseline information will be updated and the sustainability appraisal objectives against which options and policies are assessed will also need to be reviewed to ensure they remain relevant and appropriate.



## 7. Local Development Document Profiles

### Sites and Designations Development Plan Document

<b>Role and content</b>	To review local designations and potential site specific allocations, including boundaries of the four defined villages, and local nature conservation boundaries.	
<b>Status</b>	Development Plan Document (DPD)	
<b>Chain of conformity</b>	The Sites and Designations DPD will conform to the strategic principles set out in the Core Strategy.	
<b>Geographic coverage</b>	New Forest National Park	
<b>Timetable</b>		
<b>Milestones</b>	Pre-production and public participation in preparation (Regulation 25) – to include various forms of consultation and involvement	<b>August 2011 – May 2012</b>
	Publication of Submission document (Regulation 27)	<b>June 2012</b>
	Public representations period on Submission document and consideration of representations (Regulation 28)	<b>June – July 2012</b>
	Submission (Regulation 30)	<b>December 2012</b>
	Pre-Hearing Meeting	<b>February 2013</b>
	Hearing Sessions Open	<b>April 2013</b>
	Inspector's Report Fact Check	<b>June 2013</b>
	Inspector's Report Final	<b>July 2013</b>
	Adoption of document and revisions to Proposals Map	<b>September 2013</b>
<b>Arrangements of production and review</b>		
<b>Who is leading the production of the document?</b>	National Park Authority's Policy and Plans Team, with input from specialist officers within the Authority, and from partner organisations.	
<b>Management arrangements</b>	Approval required by full New Forest National Park Authority meeting at key stages of production.	
<b>Resources</b>	Policy and Plans teams at the NPA, supported by other teams within the NPA and external organisations where required	
<b>External community involvement</b>	Statutory consultation taking into account Statement of Community Involvement	
<b>Monitoring and review mechanisms</b>	Annual Monitoring Report	

**Design Guide Supplementary Planning Document**

<b>Role and content</b>	To produce building design guidance for new development in New Forest National Park	
<b>Status</b>	Supplementary Plan Document (SPD)	
<b>Chain of conformity</b>	General conformity with the Core Strategy; in particular policies DP1, CP7, CP8 and DP6.	
<b>Geographic coverage</b>	The New Forest National Park	
<b>Timetable</b>		
<b>Milestones</b>	Production Period	January 2009 – May 2011
	Publication of draft SPD for consultation	June 2011
	Public consultation on draft SPD	June 2011 – July 2011
	Consideration of representations	August 2011 – September 2011
	Adoption of SPD	September 2011
<b>Arrangements of production and review</b>		
<b>Who is leading the production of the document?</b>	National Park Authority's Policy and Plans Team, with input from specialist officers within the Authority, and from partner organisations.	
<b>Management arrangements</b>	Approval required by full National Park Authority, including consideration of consultation responses.	
<b>Resources</b>	Existing staff resources	
<b>External community involvement</b>	Statutory consultation taking into account Statement of Community Involvement	
<b>Monitoring and review mechanisms</b>	Annual Monitoring Report	

**Recreational Horsekeeping Supplementary Planning Document**

<b>Role and content</b>	To produce guidance for new recreational horsekeeping-related development in New Forest National Park	
<b>Status</b>	Supplementary Plan Document (SPD)	
<b>Chain of conformity</b>	General conformity with the Core Strategy; in particular policies DP21, DP22 and DP23.	
<b>Geographic coverage</b>	The New Forest National Park	
<b>Timetable</b>		
<b>Milestones</b>	Production Period	January 2010 – May 2011
	Publication of draft SPD for consultation	June 2011
	Public consultation on draft SPD	June 2011 – July 2011
	Consideration of representations	August 2011 – September 2011
	Adoption of SPD	September 2011
<b>Arrangements of production and review</b>		
<b>Who is leading the production of the document?</b>	The New Forest National Park Equine Forum (which represents a range of equine interests within the Park) with support from the National Park Authority's Policy and Plans Team.	
<b>Management arrangements</b>	Approval required by full National Park Authority, including consideration of consultation responses.	
<b>Resources</b>	Existing staff resources	
<b>External community involvement</b>	Statutory consultation taking into account Statement of Community Involvement	
<b>Monitoring and review mechanisms</b>	Annual Monitoring Report	

**Standards Supplementary Planning Document**

<b>Role and content</b>	To set out the National Park Authority's standards for car parking, open space and other requirements linked to general development.	
<b>Status</b>	Supplementary Plan Document (SPD)	
<b>Chain of conformity</b>	The Standards SPD will elaborate on and provide more detail for a number of the strategic and development management policies set out in the Authority's adopted Core Strategy, particularly policies DP1 and DP3.	
<b>Geographic coverage</b>	The New Forest National Park	
<b>Timetable</b>		
<b>Milestones</b>	Production Period	March 2011 – November 2011
	Publication of draft SPD for consultation	January 2012
	Public consultation on draft SPD	January 2012 – February 2012
	Consideration of representations	February 2012
	Adoption of SPD	March 2012
<b>Arrangements of production and review</b>		
<b>Who is leading the production of the document?</b>	National Park Authority's Policy and Plans Team, with input from specialist officers within the Authority, and from partner organisations.	
<b>Management arrangements</b>	Approval required by full National Park Authority, including consideration of consultation responses.	
<b>Resources</b>	Existing staff resources and consultants, as required	
<b>External community involvement</b>	Statutory consultation taking into account Statement of Community Involvement	
<b>Monitoring and review mechanisms</b>	Annual Monitoring Report	

## **8 Evidence base**

- 8.1 A key requirement for preparation of documents is a complete, robust and up-to-date evidence base to underpin the strategy and policies.
- 8.2 In drafting the now adopted Core Strategy and Development Management Policies DPD the National Park Authority undertook a significant amount of evidence gathering and research. When preparing the documents set out in this revised LDS the Authority will continue to maintain and update a relevant evidence base, including commissioning specific pieces of research where necessary.
- 8.3 The Authority is also working jointly with Hampshire County Council, Portsmouth and Southampton City Councils and the South Downs National Park Authority on minerals and waste planning documents and the evidence base will be jointly managed between the relevant authorities in these cases, and can be viewed on Hampshire County Council's website.
- 8.4 The evidence base for the Authority's Local Development Framework will continue to be developed over time, but currently includes the following documents listed below.

i) *Strategic Flood Risk Assessment for the National Park*

This was produced for New Forest National Park Authority and New Forest District Council in line with the requirements of Planning Policy Statement 25 'Development and Flood Risk'.

ii) *Village Design Statements*

The Authority supports parish councils and local groups in the preparation of Parish Plans and Village Design Statements. In particular Village Design Statements will be adopted by the Authority as Supplementary Planning Documents which will then be a material consideration when assessing planning applications.

iii) *Annual Monitoring Report*

The National Park Authority prepares an Annual Monitoring Report each year. This assesses the performance of the Authority's planning policies against a series of national indicators, and also charts progress against the Authority's Local Development Scheme. The annual review of planning policies and performance will inform the development of the Authority's new development framework.

iv) *Delivery and Implementation Plan*

This was produced by the Authority to support the submission of the Core Strategy and sets out the infrastructure required to deliver the Core Strategy over the next 20 years. It will be updated each year alongside the production of the Authority's Annual Monitoring Report.

v) *Sustainability Appraisal / Strategic Environmental Assessment data*

The Authority has already undertaken an SA/SEA and a Habitats Regulations Assessment for the adopted Core Strategy DPD. Future revisions to the baseline data and the strategic objectives are anticipated prior to the preparation of the Authority's next DPD.

vi) *Other studies*

The Authority is also undertaking, or has commissioned, a number of specific studies to inform the Local Development Framework. These comprise core areas of work including housing and recreation, with an indicative list of evidence base studies including:

- the Strategic Housing Land Availability Assessment; - To be updated
- the New Forest National Park Landscape Strategy - In preparation
- the New Forest National Park Biodiversity Action Plan - In preparation

## **9 Risk Assessment**

- 9.1 The main risk to the process is the potential failure to meet key stages set out in this Local Development Scheme. Progress will continue to be reviewed on a regular basis through the Authority's Annual Monitoring Reports.
- 9.2 Other risks include the potential for staff to leave before the end of the project plan together with failure to fill resulting vacancies.
- 9.3 In terms of the capacity of the Authority's Policy and Plans team, where it would be more efficient to use external resources, or where information is seriously deficient and is not available from a partner agency, the Authority will consider the use of specialist consultancy. The National Park Authority will also consider working with other organisations to commission any relevant studies. This is exemplified by the continuation of joint working with Hampshire County Council, Portsmouth and Southampton City Councils and now South Downs National Park Authority in the production of the minerals and waste Local Development Framework, which has significant resource benefits and savings (e.g. one joint examination and reduced printing costs).
- 9.4 The joint production of development plan documents also presents a number of risks. A key risk revolves around the timetabling for the production of joint documents and the potential for delays in one partner organisation impacting on the progress of the other partner(s). The failure to reach agreement on policies and proposals within joint documents may also delay progress against the Local Development Scheme targets. Close joint working and liaison between the planning authorities is therefore essential.

## **10 Arrangements for monitoring and review**

- 10.1 The Authority publishes an Annual Monitoring Report each December. This document includes an assessment of progress on preparation of local development documents against the timetable and milestones set out in this Local Development Scheme and the extent to which the Local Development Framework policies are being achieved. The monitoring report currently has to be submitted to the Secretary of State for approval.

## 11 Glossary and abbreviations

<b>AMR</b>	<b>Annual Monitoring Report</b> Part of the Local Development Framework, this report will assess the implementation of the Local Development Scheme and the extent to which policies are being successfully implemented.
<b>Core Strategy</b>	The Core Strategy sets out the long term vision, objectives and spatial strategy, and provides the framework for the preparation of other Development Plan Documents.
<b>Development Plan</b>	As set out in Section 38(3) of the Planning and Compulsory Purchase Act 2004, an authority's Development Plan currently consists of the relevant Regional Spatial Strategy (RSS) and the Development Plan Documents contained within its Local Development Framework. <i>Upon enactment of the Localism Bill the Government intends that the RSS will no longer form part of the Development Plan.</i>
<b>DPD</b>	<b>Development Plan Document</b> Spatial planning documents which are subject to independent examination. All adopted or approved DPDs form the Development Plan for the area.
<b>LDD</b>	<b>Local Development Documents</b> The collective term for Development Plan Documents, Supplementary Planning Documents and the Statement of Community Involvement.
<b>LDF</b>	<b>Local Development Framework</b> The name for the portfolio of local development documents. It comprises Development Plan Documents, Supplementary Planning Documents, a Statement of Community Involvement, the Local Development Scheme and the Annual Monitoring Report.
<b>LDS</b>	<b>Local Development Scheme</b> Sets out the programme for preparing local development documents as part of the Local Development Framework.
<b>LSP</b>	<b>Local Strategic Partnership</b> Partnerships of stakeholders who develop ways of involving local people in shaping the future of their neighbourhood and how services are provided. They are often single, non-statutory, multi-agency bodies which aim to bring together locally the public, private, community and voluntary sectors.
<b>MPS</b>	<b>Minerals Planning Statement</b> Updated Government advice (gradually replacing Minerals Planning Guidance Notes)

<b>PPG</b>	<b>Planning Policy Guidance Note</b> Government advice on planning matters
<b>PPS</b>	<b>Planning Policy Statement</b> Updated Government advice (gradually replacing PPGs)
<b>Proposals Map</b>	A map indicating the areas to which particular Local Development Framework policies or considerations apply. It will be revised as each new Development Plan Document is adopted.
<b>RSS</b>	<b>Regional Spatial Strategy</b> The strategic Plan for the region produced by the Regional Assembly. In the case of the New Forest National Park, this is the adopted South East Plan.
<b>SA</b>	<b>Sustainability Appraisal</b> Tool for appraising policies to ensure they reflect sustainable development objectives (i.e. social, environmental and economic factors) and required to be undertaken for all local development documents.
<b>SCI</b>	<b>Statement of Community Involvement</b> Sets out the standards which the National Park Authority will achieve with regard to involving local communities in the preparation of local development documents and development management decisions.
<b>SEA</b>	<b>Strategic Environmental Assessment</b> Assessment of the broader environmental impacts of the policies and proposals contained within the Local Development Framework (in line with SEA Directive 2002)
<b>SPD</b>	<b>Supplementary Planning Document</b> Documents within the Local Development Framework which do not have development plan status but which are a material planning consideration in the determination of applications and appeals

## ANNEX A: Local Plan ‘Saved’ Policies

The tables below list those policies which have been ‘saved’ until they are replaced by the National Park Authority’s own Local Development Framework. The Authority’s development plan comprises the Hampshire Minerals and Waste Core Strategy and the National Park Authority Core Strategy and Development Management Policies. Upon adoption of those documents the majority of local plan policies previously covering the National Park were superseded. Only a small number of policies now remain and these are likely to be replaced by the forthcoming planning documents, set out below.

Key to notations used:

DPD Hampshire Minerals and Waste Plan  
SPD ‘Standards’ Supplementary Planning Document

<b>NEW FOREST LOCAL PLAN FIRST ALTERATION 2001-2011 (adopted August 2005)</b>		
<b>Policy / Section</b>	<b>Description</b>	<b>Replaced by</b>
DW-T9	New car parking provision on development sites and elsewhere	SPD

<b>WILTSHIRE AND SWINDON WASTE LOCAL PLAN (adopted 2005)</b>		
<b>Policy / Section</b>	<b>Description</b>	<b>Replaced by</b>
10	Waste Audits	DPD