

New Forest National Park Authority Local Development Framework



Local Development Scheme February 2007

This Local Development Scheme sets out the New Forest National Park Authority's three year programme for the preparation of the individual documents which will form the New Forest National Park Authority Local Development Framework

CONTENTS

| | Page |
|--|------|
| 1. Introduction | 7 |
| 2. Hierarchy of policy and plan-making | 9 |
| 3. Programme for Local Development Documents | 10 |
| 4. Transitional Period – ‘Saved’ Policies | 12 |
| 5. Sustainability Appraisal and Strategic Environment Assessment | 14 |
| 6. Programme for Preparing Local Development Documents – Table | 15 |
| 7. Schedule of Proposed Local Development Documents – Table | 16 |
| 8. Local Development Document Profiles | 19 |
| 9. Evidence Base | 27 |
| 10. Risk Assessment | 29 |
| 11. Arrangements for Monitoring and Review | 30 |
| 12. Glossary and Abbreviations | 31 |

New Forest National Park Authority Local Development Scheme

1. Introduction

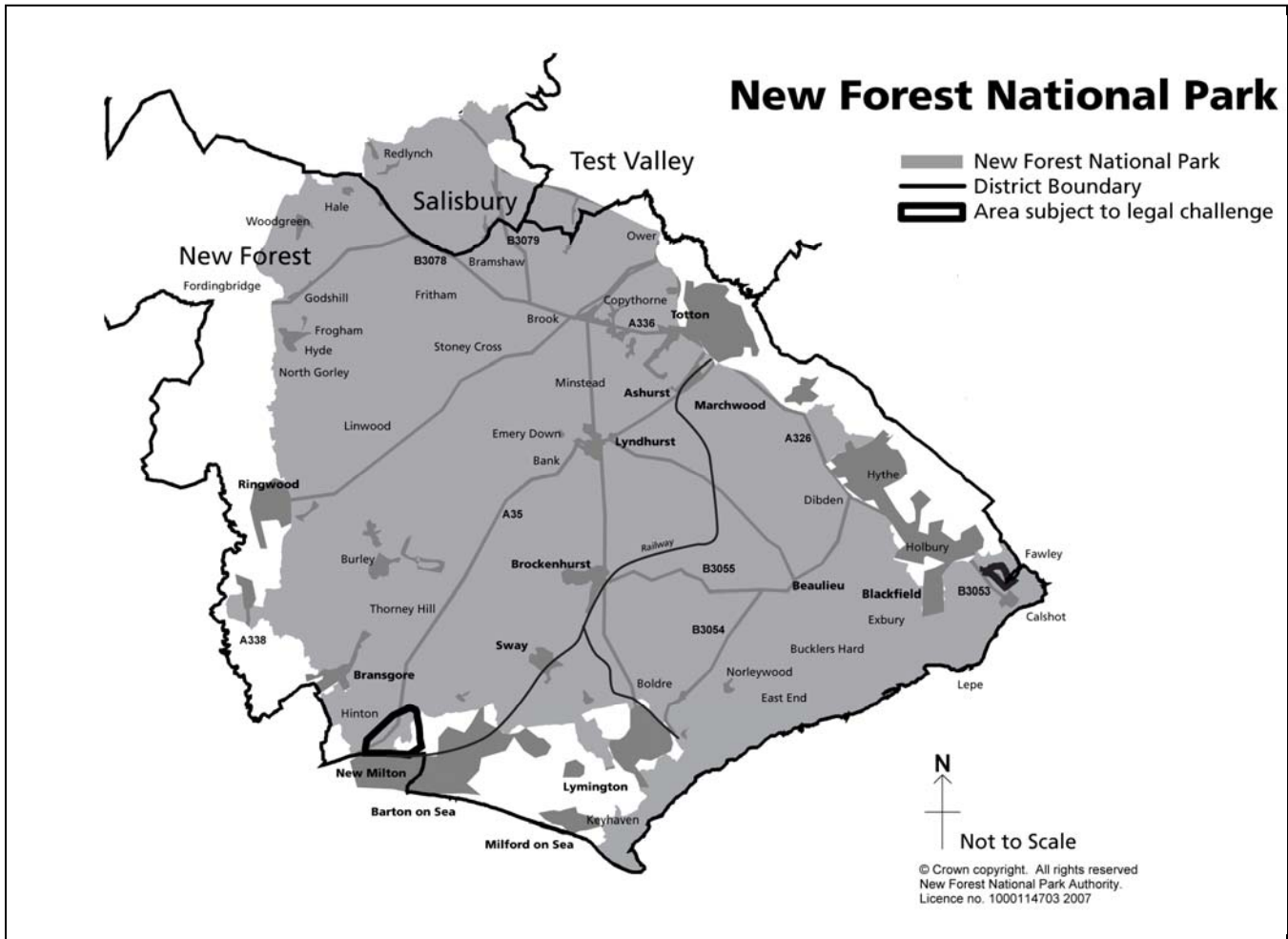
1.1 The designation of the New Forest National Park was confirmed in March 2005 and the National Park Authority assumed its full planning responsibilities on 1 April 2006. The Authority's role is to ensure that the two purposes of National Park designation are achieved. These purposes, common to all National Parks, are:

- to conserve and enhance the natural beauty, wildlife and cultural heritage of the Park; and
- to promote opportunities for the understanding and enjoyment of the Park's special qualities by the public.

In doing this the Authority is required to seek to foster the economic and social well-being of local communities within the National Park.

1.2 The Authority is responsible for spatial planning, minerals and waste planning, development control and enforcement and other related regulatory functions within the National Park. The Authority is also required to produce a Management Plan for the National Park. This establishes the long term vision, aims and strategic policy framework for the National Park and will guide the work of the Authority and all the other organisations that contribute to the delivery of the National Park purposes. The preparation of the Local Development Framework for the New Forest National Park will be integrated wherever possible with the development of the National Park Management Plan.

1.3 The New Forest National Park covers parts of New Forest District, Test Valley Borough and Salisbury District, including land within the counties of Hampshire and Wiltshire (see indicative map overleaf).



- 1.4 This Local Development Scheme sets out the New Forest National Park Authority's programme for producing local development documents for the New Forest National Park during the next three years and beyond. The glossary, on page 27, sets out the terminology used in this Scheme.
- 1.5 The Authority is responsible for meeting the requirements on local planning authorities under the Planning and Compulsory Purchase Act, 2004 (the Act). These include preparing and monitoring a Local Development Scheme to inform the public of the documents that will form the new planning policy framework, and set out a timetable for their preparation and review on a rolling programme.
- 1.6 Sections 6 and 7 of this Local Development Scheme illustrate the proposed timetabling for the production of development plan documents,

including the examination dates and the date of adoption. Section 8 provides a more detailed profile of each document, including the stages of public consultation and the arrangements for production and review.

2. Hierarchy of policy and plan-making

Government guidance

- 2.1 At national level, the Government is revising its planning advice by replacing Planning Policy Guidance Notes (PPGs) with shorter Planning Policy Statements (PPSs). Government policy must be reflected in the policies contained in regional and local planning documents.

Regional Spatial Strategy

- 2.2 Similarly, planning policies set out in the Regional Spatial Strategy should be reflected in the New Forest National Park Authority's planning policy documents. For planning purposes, the emerging South East Plan is the Regional Spatial Strategy covering the New Forest National Park. The weight to be attached to the Regional Spatial Strategy depends on the stage it has reached. On 31 March 2006 the Regional Assembly submitted the draft South East Plan for Government approval. Once the Regional Spatial Strategy has been through the Examination in Public and the proposed changes have been published, considerable weight will be attached to the Strategy. The draft Plan sets out a broad planning framework for the region, including a section on South Hampshire and a specific policy for the New Forest National Park. Once the emerging South East Plan has Government approval it will replace the Regional Planning Guidance for the South East (RPG9). The New Forest National Park Authority must also have regard to the proposals contained in the emerging South West Regional Spatial Strategy.

Local Development Framework

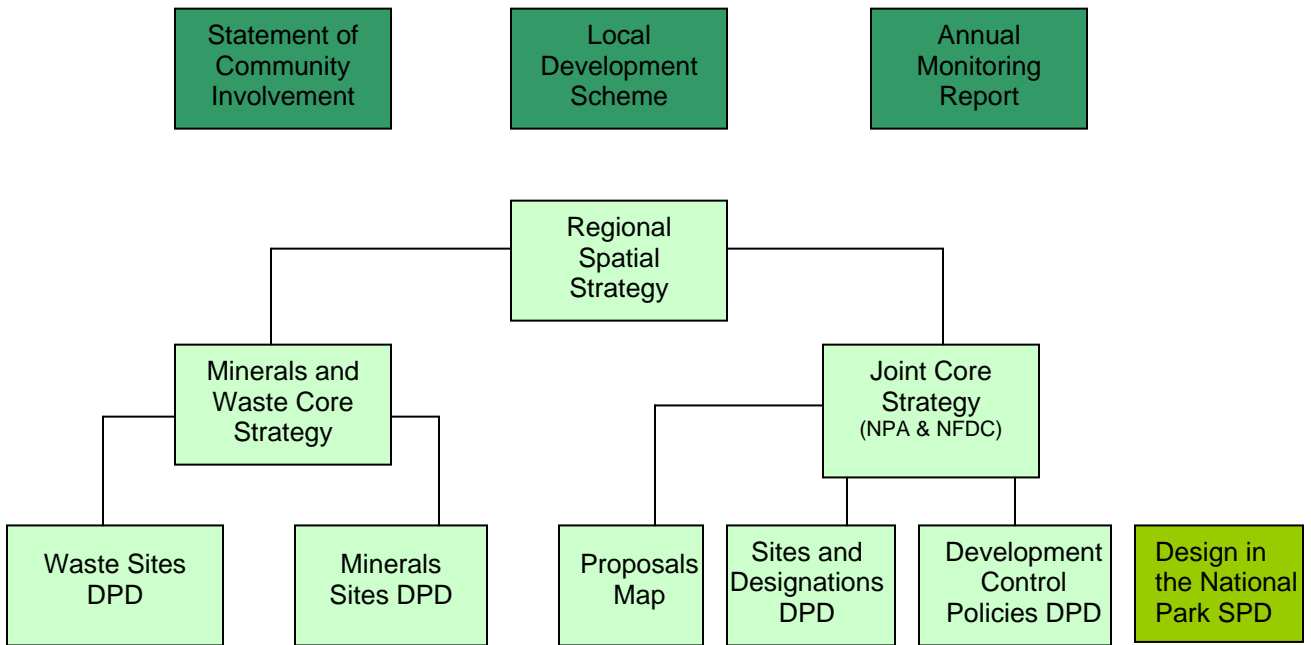
- 2.3 Each local planning authority is required to produce a Local Development Framework. The New Forest National Park Local Development Framework will contain a suite of planning documents designed to help deliver the statutory purposes and duty of the National Park and the vision and policies set out in the National Park Management Plan. The 'development plan' for the New Forest National Park will consist of the Regional Spatial Strategy for the South East and the development plan documents (including minerals and waste development plan documents) prepared by the National Park Authority.

Other relevant strategies, plans, statements and guidance

- 2.4 Work on preparing local development documents will take full account of other relevant strategies and plans, having regard to conformity requirements. The intention is to integrate the preparation of the Core Strategy with the review of the National Park Management Plan and the Sustainable Community Strategy for New Forest District. Other relevant strategies and plans that will be taken into account include:
- the emerging Regional Spatial Strategy for the South East
 - the Strategy for the New Forest (2003) – adopted as the interim National Park Management Plan.
 - the Sustainable Community Strategies prepared by New Forest District Council, Test Valley Borough Council and Salisbury District Council that include land within the National Park.

3. Programme for Local Development Documents

- 3.1 This Scheme sets out the Authority's work programme for the next three years. The programme takes account of the need for community consultation (guided by the Authority's Statement of Community Involvement) and Sustainability Appraisal and has been prepared in consultation with New Forest District Council.
- 3.2 The programme for further local development documents will be set out in future revisions to the Local Development Scheme.
- 3.3 The Authority is proposing to prepare six Development Plan Documents (DPDs), and seeks to work in partnership with other planning authorities in the region in their production. The preparation of joint documents is encouraged in Planning Policy Statement 12 (*Local Development Frameworks*, ODPM, 2004) and this Scheme assumes a significant amount of joint working. At the local level this involves joint working between the National Park Authority and New Forest District Council, and with Hampshire County Council, Portsmouth City Council and Southampton City Council on the development of minerals and waste planning policies at the county level.



| Key | |
|-----------------------------------|--|
| Development Plan Documents | |
| Other Local Development Documents | |
| Supplementary Planning Document | |

3.4 The proposed timetable for producing local development documents:

- takes advantage of the availability of relatively up-to-date policies in the various Local Plans;
- responds to current public and member concerns and priorities about key issues;
- complies with government requirements for putting the Statement of Community Involvement and Core Strategy in place as soon as possible;
- takes note of government guidance supporting the principle of joint working with neighbouring local planning authorities to save on resources and share expertise;
- spreads the Policy and Plans team's work as evenly as practicable.

3.5 The proposed joint Core Strategy will establish the broad spatial strategy for the New Forest National Park and the surrounding areas in New Forest District. Production of this document will be integrated with the review of

- the New Forest National Park Management Plan and the Sustainable Community Strategy.
- 3.6 The joint Core Strategy will also provide the framework for the preparation of other local development documents. The Development Control Policies Development Plan Document and the Sites and Designations Development Plan Document are programmed to follow on as closely as possible from the Core Strategy, because it is important that strategic issues are resolved through the Core Strategy.
- 3.7 The Local Development Framework for the National Park Authority will also include an adopted proposals map which will show geographically the adopted development plan policies of the local planning authority. This will be revised where necessary as each new development plan document is adopted.
- 3.8 The programme for further local development documents will be established in future reviews of the Local Development Scheme. This is likely to include an area action plan that addresses the need to protect back-up grazing land which extends beyond the New Forest National Park boundaries into New Forest District, Test Valley Borough, Salisbury District and Christchurch Borough. Initial discussions between the National Park Authority and the relevant neighbouring authorities will need to take place before this can be programmed into future reviews of the respective Local Development Schemes.

4. Transitional period – ‘Saved’ Policies

- 4.1 Under the Act, there is a period of transition from the previous development plan system to the new system. The policies of existing development plans are automatically ‘saved’ for a period of three years, or for longer as set out below. The situation within the New Forest National Park is complicated by the number of plans and policies inherited by the National Park Authority when it assumed its full planning responsibilities in April 2006. The relevant plans from which policies will be saved under the transitional arrangements are:
- The Hampshire Structure Plan Review 1996-2011 (adopted 2000)
 - The Wiltshire and Swindon Structure Plan 2016 (adopted 2006)
 - The Hampshire, Portsmouth and Southampton Minerals and Waste Local Plan (adopted 1998)
 - The Wiltshire and Swindon Waste Local Plan (adopted 2005)
 - The Wiltshire and Swindon Minerals Local Plan (adopted 2001)
 - The New Forest District Council Local Plan First Alteration (adopted 2005)

- The Test Valley Borough Local Plan Review 2001-2011 (adopted July 2006)
 - The Salisbury District Local Plan (adopted 2003).
- 4.2 The Regional Spatial Strategy for the South East and the development plan documents prepared by the National Park Authority will gradually replace the saved development plans for the National Park area. The weight to be attached to the draft Regional Spatial Strategy depends on the stage it has reached. It is not proposed that for each currently saved policy there will be a corresponding replacement policy in the Local Development Framework. Annex A sets out the detailed schedule of policies within the Plans outlined above, and identifies whether these will be replaced in a Local Development Document or not carried forward.

Structure Plan Policies

- 4.3 Discussions will take place with the South East England Regional Assembly and the principal authorities of Hampshire, Portsmouth and Southampton with regard to extending the life of any policies and proposals contained in the Hampshire Structure Plan Review 1996–2011. The National Park Authority will liaise with the Regional Assembly and relevant principal authorities to consider extending the life of relevant policies and proposals in the Wiltshire and Swindon Structure Plan 2016. The regional planning body will then make a request to the Secretary of State to extend the life of any policies in the relevant structure plans by 1 April 2007.

Any such saved policies will be replaced by the South East Plan when it is adopted, which is currently timetabled for February 2008, as the New Forest National Park is identified in PPS11 as being covered in full by the South East Plan.

Minerals and Waste Local Plans

- 4.4 The minerals and waste policies and proposals contained in the saved Hampshire, Portsmouth and Southampton Minerals and Waste Local Plan (1998); the Wiltshire and Swindon Waste Local Plan (2005) and the Wiltshire and Swindon Minerals Local Plan (2001) will be saved until the Hampshire Minerals and Waste Core Strategy is adopted. This is currently timetabled for July 2007. This document will cover the whole of the New Forest National Park (including the part of the Park in Wiltshire) and once adopted will provide a consistent approach to minerals and waste planning within the National Park.

District/Borough Local Plans

- 4.6 The New Forest National Park is covered by three inherited Local Plans, which are automatically saved for three years (the end date depends on their date of adoption). The New Forest National Park Authority is seeking to save the Local Plans for a further period until the proposed replacement local development documents have been adopted, which will extend beyond the three year period.
- 4.7 The Authority is aiming to provide a consistent planning policy framework for the whole New Forest National Park as soon as is possible. However, the transition from the inherited plans, policies and supplementary planning guidance which currently cover the National Park to the new Local Development Framework system will take time. There is also a need to maintain sufficient continuity to guide development decisions in the interim period.

5. Sustainability Appraisal and Strategic Environmental Assessment

- 5.1 As part of the preparation of each document, the Authority will undertake a Sustainability Appraisal and Strategic Environmental Assessment. This will:
- test policy options
 - collect baseline information
 - predict significant environmental effects
 - inform the public and interested organisations.
- 5.2 Sustainability Appraisal, incorporating the requirement of Strategic Environmental Assessment is a feedback process that informs policy options and also provides important information for the evidence base. Documents will be appraised to review their potential impact as each 'milestone' in their production is reached. Sustainability Appraisal will ensure that the preparation of local development documents has taken sustainable development principles into consideration. It will play an important part in showing whether a document is 'sound', (i.e. has been properly prepared).

6. Programme for Preparing Local Development Documents

| | 2005 | | | | | | | | | | | | 2006 | | | | | | | | | | | | 2007 | | | | | | | | | | | | 2008 | | | | | | | | | | | | 2009 | | | | | | | | | | | |
|---|------|---|---|---|---|---|---|---|---|---|---|---|------|---|---|---|---|---|---|---|---|---|---|---|------|---|---|---|---|---|---|---|---|---|---|---|------|---|---|---|---|---|---|---|---|---|---|---|------|---|---|---|---|---|---|---|---|---|---|---|
| | J | F | M | A | M | J | J | A | S | O | N | D | J | F | M | A | M | J | J | A | S | O | N | D | J | F | M | A | M | J | J | A | S | O | N | D | J | F | M | A | M | J | J | A | S | O | N | D | J | F | M | A | M | J | J | A | S | O | N | D |
| SCI | | | | | | | | | | | | | | | | | | | | | | | | | | | | | | | | | | | | | | | | | | | | | | | | | | | | | | | | | | | | |
| Core Strategy DPD | | | | | | | | | | | | | | | | | | | | | | | | | | | | | | | | | | | | | | | | | | | | | | | | | | | | | | | | | | | | |
| Development Control Policies DPD | | | | | | | | | | | | | | | | | | | | | | | | | | | | | | | | | | | | | | | | | | | | | | | | | | | | | | | | | | | | |
| Sites and Designations DPD | | | | | | | | | | | | | | | | | | | | | | | | | | | | | | | | | | | | | | | | | | | | | | | | | | | | | | | | | | | | |
| Hampshire Minerals and Waste Core Strategy | | | | | | | | | | | | | | | | | | | | | | | | | | | | | | | | | | | | | | | | | | | | | | | | | | | | | | | | | | | | |
| Minerals & Waste Core Strategy – Wiltshire 'Catch up' # | | | | | | | | | | | | | | | | | | | | | | | | | | | | | | | | | | | | | | | | | | | | | | | | | | | | | | | | | | | | |
| Waste Sites DPD | | | | | | | | | | | | | | | | | | | | | | | | | | | | | | | | | | | | | | | | | | | | | | | | | | | | | | | | | | | | |
| Minerals Sites DPD | | | | | | | | | | | | | | | | | | | | | | | | | | | | | | | | | | | | | | | | | | | | | | | | | | | | | | | | | | | | |
| Design in the National Park SPD | | | | | | | | | | | | | | | | | | | | | | | | | | | | | | | | | | | | | | | | | | | | | | | | | | | | | | | | | | | | |

| KEY | |
|--|---|
| DPD Pre-Production | |
| DPD Production | |
| DPD Submission and Examination | |
| DPD Submission | S |
| DPD Adoption including revised Proposals Map | A |
| SCI Pre-Production | |
| SCI Production | |

| | |
|--|---|
| SCI Examination | |
| Pre-Examination Meeting | P |
| Public Examination | |
| DC Policies DPD and Sites & Designations DPD due to be adopted June 2010 | * |
| SPD Pre-production | |
| SPD Production | |
| SPD Consultation | |
| SPD adoption | A |

| | |
|--|---|
| Regulation 25 Consultation – Issues & Options | ? |
| Regulation 26 Consultation – Preferred Options | |
| Regulation 28 Consultation – Submission Document | |

- The Hampshire Minerals and Waste Core Strategy (covering the Hampshire part of the Park) is to be extended to cover the part of the New Forest National Park in Salisbury District, Wiltshire. This will necessitate 'catch-up' consultation being carried out for the Wiltshire communities, ensuring that they have the statutory periods to comment before the examination into the Hampshire Minerals and Waste Core Strategy in late January 2007. The timetable for this (programmed to take place between July and early December 2006) is shown above.

7. Local Development Scheme – Schedule of Proposed Local Development Documents

| Document | Status | Role and content | Geographical coverage | Chain of conformity | Dates of consultation on Issues and Options | Dates for participation on preferred options / draft SPD and SA Report | Date for submission to Secretary of State | Proposed date for adoption |
|------------------------------------|----------------------------|--|--|--|---|--|---|----------------------------|
| Statement of Community Involvement | Local Development Document | Sets out the Authority's policies for community involvement | New Forest National Park | Town and Country Planning (Local Development) (England) Regulations | April – May 2006 | June – July 2006 (SA Report not required) | October 2006 | March 2007 |
| Core Strategy | DPD | Sets out the vision, objectives and spatial strategy for the National Park (and New Forest District) | New Forest National Park and New Forest District | Consistent with national planning policy and general conformity with RPG9 and emerging South East Plan | November 2006 - January 2007 | September – October 2007 | May 2008 | May 2009 |
| Development Control Policies DPD | DPD | Sets out the development control policies for the National Park | New Forest National Park | Core Strategy | September – October 2007 | May – June 2008 | May 2009 | June 2010 |
| Sites and Designations DPD | DPD | To allocate sites for development, | New Forest National Park and New | Core Strategy | January – February 2008 | September - October 2008 | May 2009 | June 2010 |

7. Local Development Scheme – Schedule of Proposed Local Development Documents

| Document | Status | Role and content | Geographical coverage | Chain of conformity | Dates of consultation on Issues and Options | Dates for participation on preferred options / draft SPD and SA Report | Date for submission to Secretary of State | Proposed date for adoption |
|---|--------|--|--|---|---|--|---|----------------------------|
| | | open space and community needs, and review local designations. | Forest District | | | | | |
| Hampshire Minerals and Waste Core Strategy | DPD | Sets out objectives and spatial development strategy for Hampshire; provides development control framework | Hampshire, including the National Park, Southampton and Portsmouth | Consistent with national and regional policy, and general conformity with RPG9 and emerging South East Plan | April - May 2005 | September – November 2005 | May 2006 | July 2007 |
| Hampshire Minerals and Waste Core Strategy (Wiltshire catch-up) | DPD | Extending Core Strategy for Hampshire to the whole of the Park | Hampshire and whole of the New Forest National Park | As above | June 2006 – July 2006 | August – early October 2006 | October 2006 | July 2007 |
| Hampshire Minerals Sites | DPD | Detailed policies and potential sites for future | Hampshire, including the National Park, Southampton | Hampshire Minerals and Waste Core Strategy | September - October 2006 | April – May 2007 | October 2007 | December 2008 |

7. Local Development Scheme – Schedule of Proposed Local Development Documents

| Document | Status | Role and content | Geographical coverage | Chain of conformity | Dates of consultation on Issues and Options | Dates for participation on preferred options / draft SPD and SA Report | Date for submission to Secretary of State | Proposed date for adoption |
|----------------------------------|--------|---|--|---|---|--|---|----------------------------|
| | | minerals extraction | and Portsmouth | | | | | |
| Hampshire Waste Management Sites | DPD | Detailed policies and potential sites for resource management | Hampshire, including the National Park, Southampton and Portsmouth | Hampshire Minerals and Waste Core Strategy | September - October 2006 | April - May 2007 | October 2007 | December 2008 |
| Design in the National Park | SPD | Detailed design guidance | New Forest National Park | To conform with Policy Q2 of the existing RPG9 and Policy CC12 of the emerging South East Plan. | n/a | November 2007 – January 2008 | n/a | April 2008 |

8. Local Development Document Profiles

Statement of Community Involvement

| | | |
|--|---|-------------------------|
| Role and content | Sets out the National Park Authority's policies for involving the community in the preparation of local development documents and planning applications | |
| Status | Local Development Document | |
| Chain of conformity | Town and Country Planning (Local Development) (England) Regulations 2004 | |
| Geographic coverage | New Forest National Park | |
| Timetable | | |
| Milestones | Pre-Production | January – March 2006 |
| | Community involvement as required by Regulation 25 | April – May 2006 |
| | Public participation on draft statement | June – July 2006 |
| | Preparation of submission statement | August – September 2006 |
| | Submission of statement to Secretary of State | October 2006 |
| | Pre-examination consideration of responses | October – November 2006 |
| | Pre-examination meeting (if required) | December 2006 |
| | Examination period | January 2007 |
| | Receipt of Inspector's binding report | January 2007 |
| | Adoption and publication | March 2007 |
| Arrangements for production and review | | |
| Who is leading the production of the document? | Policy and Plans Team – New Forest National Park Authority | |
| Management arrangements | Approval required at each milestone by the full National Park Authority | |
| Resources | Policy and Plans Team – New Forest National Park Authority | |
| External community involvement | Set out in the SCI | |
| Monitoring and review mechanisms | Annual Monitoring Report | |

Core Strategy Development Plan Document

| | | |
|--|---|------------------------------|
| Role and content | The joint Core Strategy with New Forest District Council will set out the vision, objectives and spatial strategy, and provide the framework for the preparation of other Development Plan Documents. | |
| Status | Development Plan Document (DPD) | |
| Chain of conformity | Consistent with national planning policy and general conformity with the emerging Regional Spatial Strategy for the South East and the existing Regional Planning Guidance (RPG9), | |
| Geographic coverage | New Forest National Park and New Forest District. Evidence gathering will be integrated with the preparation of the National Park Management Plan and the review of the new Forest District Community Strategy. | |
| Timetable | | |
| Milestones | Pre-Production period | January 2006 – October 2006 |
| | Preparation of issues and options and initial SA Report | November 2006 – January 2007 |
| | Public participation on preferred options document and SA Report | September - October 2007 |
| | Consideration of representations | November 2007 - January 2008 |
| | Preparation of submission DPD and SA Report | February – May 2008 |
| | Submission of DPD and SA Report to Secretary of State | May 2008 |
| | Consultation on submission DPD and SA Report | May – June 2008 |
| | Pre-examination consideration of responses | June – November 2008 |
| | Pre-examination meeting | August 2008 |
| | Examination Period | November 2008 |
| | Receipt of Inspector's binding report | April 2009 |
| | Adoption of document and revised Proposals Map | May 2009 |
| Arrangements for production and review | | |
| Who is leading the production of the document? | Joint production - Policy and Plans Teams from NPA and NFDC | |
| Management arrangements | Approval required by full New Forest National Park Authority. Economy and Planning Review Panel / Cabinet – New Forest District Council. | |
| Resources | Policy and Plans Teams at the Authority and NFDC, external consultants where required | |
| External community involvement | Statutory consultation taking into account Statement of Community Involvement | |
| Monitoring and review mechanisms | Annual Monitoring Report | |

Development Control Policies Development Plan Document

| | | |
|--|--|----------------------------|
| Role and content | To provide detailed development control policies for the New Forest National Park. | |
| Status | Development Plan Document (DPD) | |
| Chain of conformity | Core Strategy | |
| Geographic coverage | New Forest National Park. | |
| Timetable | | |
| Milestones | Pre-Production period | January – October 2007 |
| | Preparation of issues and options and initial SA Report | September – October 2007 |
| | Public participation on preferred options document and SA Report | May – June 2008 |
| | Consideration of representations | July – October 2008 |
| | Preparation of submission DPD and SA Report | November 2008 – April 2009 |
| | Submission of DPD and SA Report to Secretary of State | May 2009 |
| | Consultation on submission DPD and SA Report | May – June 2009 |
| | Pre-examination consideration of responses | June – November 2009 |
| | Pre-examination meeting | August 2009 |
| | Examination period | November 2009 |
| | Receipt of Inspector's binding report | May 2010 |
| | Adoption of document and revised Proposals Map | June 2010 |
| Arrangements for production and review | | |
| Who is leading the production of the document? | National Park Authority's Policy and Plans Teams. | |
| Management arrangements | Approval required by full New Forest National Park Authority. | |
| Resources | Policy and Plans Teams at the National Park Authority, external consultants where required | |
| External community involvement | Statutory consultation taking into account Statement of Community Involvement | |
| Monitoring and review mechanisms | Annual Monitoring Report | |
| Note: | This DPD is due to be submitted at the same time as the Sites and Designations DPD and the examination and reporting timescales may need to be revised at a later date if necessary. | |

Sites and Designations Development Plan Document

| | | |
|--|--|--|
| Role and content | To allocate sites for development, open space and community needs and to review local designations (e.g. sites of importance for nature conservation). | |
| Status | Development Plan Document (DPD) | |
| Chain of conformity | Core Strategy | |
| Geographic coverage | New Forest National Park and New Forest District | |
| Timetable | | |
| Milestones | Pre-Production Period | January 2007 – February 2008 |
| | Preparation of issues and options and initial SA Report | January – February 2008 |
| | Public participation on preferred options document and SA Report | September – October 2008 |
| | Consideration of representations | November – December 2008 |
| | Preparation of submission DPD and SA Report | January – April 2009 |
| | Submission of DPD and SA Report to Secretary of State | May 2009 |
| | Consultation on submission DPD and SA Report | May - July 2009 (taking into account Reg. 32 and 33 consultation) |
| | Pre-examination consideration of responses | August – October 2009 |
| | Pre-examination meeting | August 2009 |
| | Examination period | November 2009 |
| | Receipt of Inspector's binding report | May 2010 |
| | Adoption of document and revised proposals map | June 2010 |
| Arrangements of production and review | | |
| Who is leading the production of the document? | National Park Authority – Policy and Plans Team, NFDC – Policy and Plans Team | |
| Management arrangements | Approval required by full New Forest National Park Authority. Economy and Planning Review Panel / Leisure Review Panel, Cabinet – New Forest District Council. | |
| Resources | Policy and Plans Teams at the Authority and NFDC, external consultants where required | |
| External community involvement | Statutory consultation taking into account Statement of Community Involvement | |
| Monitoring and review mechanisms | Annual Monitoring Report | |
| Note: | This DPD is due to be submitted at the same time as the Development Control Policies DPD and the examination and reporting timescales may need to be revised at a later date if necessary. | |

Hampshire Minerals and Waste Core Strategy

| | | |
|--|---|---------------------------|
| Role and content | The Core Strategy will set out the vision and strategy for mineral provision and resource management in Hampshire. Objectives, core policies and the monitoring and implementation frameworks will flow from this Core Strategy | |
| Status | Development Plan Document (DPD) | |
| Chain of conformity | General conformity with national and regional policy including Planning Policy Statements and Planning Policy Guidance Notes, Mineral Planning Statements and Mineral Planning Guidance Notes, the emerging Regional Spatial Strategy and RPG9. | |
| Geographic coverage | The administrative areas of Hampshire, Portsmouth, Southampton and the New Forest National Park | |
| Timetable | | |
| Milestones | Pre-Production Period | August 2004 - March 2005 |
| | Preparation of issues and options and initial SA Report | April – May 2005 |
| | Public participation on preferred options document and SA Report | September – November 2005 |
| | Consideration of representations | December – February 2006 |
| | Preparation of submission DPD and SA Report | February - April 2006 |
| | Submission of DPD and SA Report to Secretary of State | May 2006 |
| | Consultation on submission DPD and SA Report | May – June 2006 |
| | Pre-examination consideration of responses | June – September 2006 |
| | Pre-examination meeting | October 2006 |
| | Examination period | January – February 2007 |
| | Receipt of Inspector's binding report | June 2007 |
| | Adoption of document and revised Proposals Map | July 2007 |
| Arrangements for production and review | | |
| Who is leading the production of the document? | Authority – Policy and Plans Team; Hampshire C.C. – Minerals and Waste Planning Group; Portsmouth C.C. – Planning Policy; Southampton C.C. – Planning and Sustainability Division | |
| Management arrangements | Approval required by full National Park Authority. Input from joint (Hampshire, Portsmouth, Southampton and New Forest National Park) Member Steering Group | |
| Resources | Existing staff resources and consultants, as required | |
| External community involvement | Statutory consultation taking into account Statement of Community Involvement | |
| Monitoring and review mechanisms | Annual Monitoring Report | |

Hampshire Minerals and Waste Core Strategy (Wiltshire part)

It is proposed to extend the coverage of the submitted Hampshire Minerals and Waste Core Strategy (covering the Hampshire part of the National Park) to cover the part of the Park in Salisbury District, Wiltshire. This necessitates 'catch-up' consultation being carried out for the Wiltshire communities, ensuring that they have the statutory periods to comment before the examination into the Hampshire Minerals and Waste Core Strategy starts in late January 2007, the timetable for which is set out below.

| | | |
|--|--|-----------------------------------|
| Role and content | The Core Strategy will set out the vision and strategy for mineral provision and resource managed in Hampshire. This consultation will extend the Core Strategy into the small part of the National Park within Salisbury District, Wiltshire. | |
| Status | Development Plan Document (DPD) | |
| Chain of conformity | General conformity with national and regional policy and RPG9 and the emerging Regional Spatial Strategy | |
| Geographic coverage | Hampshire and whole of the New Forest National Park (including the area within Salisbury District, Wiltshire) | |
| Timetable | | |
| Milestones | Pre-Production Period | March - June 2006 |
| | Preparation of issues and options and initial SA Report | June - July 2006 |
| | Public participation on preferred options document and SA Report | August 2006 – early October 2006 |
| | Consideration of representations | October 2006 |
| | Preparation of submission DPD and SA Report | October 2006 |
| | Submission of DPD and SA Report to Secretary of State | October 2006 |
| | Consultation on submission DPD and SA Report | Late October 2006 – December 2006 |
| | Pre-examination consideration of responses | December 2006 |
| | Pre-examination meeting | October 2006 |
| | Examination period | January – February 2007 |
| | Receipt of Inspector's binding report | June 2007 |
| | Adoption of document and revised Proposals Map | July 2007 |
| Arrangements for production and review | | |
| Who is leading the production of the document? | Policy and Plans Team at the NPA; | |
| Management arrangements | Approval required by full National Park Authority. | |
| Resources | Existing staff resources and consultants, as required | |
| External community involvement | Statutory consultation taking into account Statement of Community Involvement | |
| Monitoring and review mechanisms | Annual Monitoring Report | |

Hampshire Waste Management Sites Development Plan Document

| | | |
|--|--|--|
| Role and content | Spatial expression of preferred options for waste management, based on the Core Strategy. It will provide spatial detail of resource management areas/sites, with site specific policies and maps as required. Proposals Map to be updated once adopted. | |
| Status | Development Plan Document (DPD) | |
| Chain of conformity | Hampshire Minerals and Waste Core Strategy | |
| Geographic coverage | The administrative areas of Hampshire, Portsmouth, Southampton and the New Forest National Park (including the Wiltshire part of the Park) | |
| Timetable | | |
| Milestones | Pre-Production Period | September 2005 – May 2006 |
| | Preparation of issues and options and initial SA Report | September 2005 – March 2006 |
| | Public participation on preferred options document and SA Report | April – May 2007 |
| | Consideration of representations | May – October 2007 |
| | Preparation of submission DPD and SA Report | May – October 2007 |
| | Submission of DPD and SA Report to Secretary of State | October 2007 |
| | Consultation on submission DPD and SA Report | October – December 2007 and January – February 2008 |
| | Pre-examination consideration of responses | November 2007 – May 2008 |
| | Pre-examination meeting | March 2008 |
| | Examination period | June – July 2008 |
| | Receipt of Inspector's binding report | November 2008 |
| | Adoption of document and revised Proposals Map | December 2008 |
| Arrangements for production and review | | |
| Who is leading the production of the document? | Authority – Policy and Plans Team; Hampshire C.C. – Minerals and Waste Planning Group; Portsmouth C.C. – Planning Policy; Southampton C.C. – Planning and Sustainability Division | |
| Management arrangements | Approval required by full National Park Authority. Input from joint (Hampshire, Portsmouth, Southampton and New Forest National Park) Member Steering Group | |
| Resources | Existing staff resources and consultants, as required | |
| External Community Involvement | Statutory consultation taking into account Statement of Community Involvement | |
| Monitoring and review mechanisms | Annual Monitoring Report | |
| Note: | This DPD is due to be submitted at the same time as the Minerals Sites DPD and the examination and reporting timescales may need to be revised at a later date if necessary. | |

Hampshire Minerals Sites Development Plan Document

| | | |
|--|---|--|
| Role and content | Provides detailed sites and locations for mineral supply and extraction and landfill, based on the Core Strategy. It will provide spatial detail of minerals areas/sites, with site specific policies and maps as required. Proposals Map to be updated once adopted. | |
| Status | Development Plan Document (DPD) | |
| Chain of conformity | Hampshire Minerals and Waste Core Strategy | |
| Geographic coverage | The administrative areas of Hampshire, Portsmouth, Southampton and the New Forest National Park (including the Wiltshire part of the Park) | |
| Timetable | | |
| Milestones | Pre-Production Period | September 2005 – May 2006 |
| | Preparation of issues and options and initial SA Report | September 2005 – March 2006 |
| | Public participation on preferred options document and SA Report | April – May 2007 |
| | Consideration of representations | May – October 2007 |
| | Preparation of submission DPD and SA Report | May – October 2007 |
| | Submission of DPD and SA Report to Secretary of State | October 2007 |
| | Consultation on submission DPD and SA Report | October – December 2007 and January – February 2008 |
| | Pre-examination consideration of responses | November 2007 – May 2008 |
| | Pre-examination meeting | March 2008 |
| | Examination period | June – July 2008 |
| | Receipt of Inspector's binding report | November 2008 |
| | Adoption of document and revised Proposals Map | December 2008 |
| Arrangements of production and review | | |
| Who is leading the production of the document? | NPA – Policy and Plans Team; Hampshire CC. – Minerals and Waste Planning Group; Portsmouth CC – Planning Policy; Southampton CC – Planning and Sustainability Division | |
| Management arrangements | Approval required by full National Park Authority. Input from joint (Hampshire, Portsmouth, Southampton and New Forest National Park) Member Steering Group | |
| Resources | Existing staff resources and consultants, as required | |
| External community involvement | Statutory consultation taking into account Statement of Community Involvement | |
| Monitoring and review mechanisms | Annual Monitoring Report | |
| Note: | This DPD is due to be submitted at the same time as the Waste Sites DPD and the examination and reporting timescales may be revised if necessary. | |

Design in the National Park Supplementary Plan Document

| | | |
|--|---|------------------------------|
| Role and content | To produce design guidance for new development in New Forest National Park | |
| Status | Supplementary Plan Document (SPD) | |
| Chain of conformity | To conform with Policy Q2 of the existing RPG9 and Policy CC12 of the emerging South East Plan. | |
| Geographic coverage | The administrative areas of the New Forest National Park | |
| Timetable | | |
| Milestones | Pre-Production Period | March – June 2007 |
| | Preparation of draft SPD and SA Report | July – October 2007 |
| | Public participation on draft SPD and SA Report | November 2007 – January 2008 |
| | Consideration of representations | February – March 2008 |
| | Adoption and publication of SPD | April 2008 |
| Arrangements of production and review | | |
| Who is leading the production of the document? | National Park Authority's Environmental Design Team | |
| Management arrangements | Approval required by full National Park Authority. | |
| Resources | Existing staff resources and consultants, as required | |
| External community involvement | Statutory consultation taking into account Statement of Community Involvement | |
| Monitoring and review mechanisms | Annual Monitoring Report | |

9. Evidence base

- 9.1 A key requirement for preparation of documents is a complete, robust and up-to-date evidence base to underpin the strategy and policies. The adequacy and 'soundness' of the evidence base is one of the factors that the Secretary of State will take into account in assessing this Scheme.
- 9.2 The New Forest National Park Authority is a new authority and has to assimilate a large amount of information from existing local planning authorities and from statutory bodies and other stakeholders. The evidence base will develop over time as the Authority becomes more established, but it is likely to include the following listed below. The Authority is proposing to produce a number of joint documents and the evidence base will be jointly managed between the relevant authorities in these cases.

i) *Planning application system monitoring*

The Authority's application database will be used to measure performance in securing policy objectives in terms of the Authority's decision performance, appeal success and review of Inspectors decisions after a suitable period of time.

ii) *Checking saved policies against local, regional and national policies*

This will involve 'proofing' policies against evolving national and regional policy, circular advice, guidelines and good practice.

iii) *Census trends*

The 2001 Census has now been evaluated. Future planning policy will be informed by comparing the latest data with that contained in the 1991 Census. In addition, the mid year population estimates, migration trends and household projections will also inform policy, particularly housing policy.

iv) *Review of the National Park Management Plan*

A review of the *Strategy for the New Forest* – adopted as the interim National Park Management Plan - will commence in summer 2006, and every effort will be made to coordinate preparation work on that document with work on local development documents to ensure that the mutual benefits are maximised.

v) *State of the Park Report*

The National Park Authority intends to produce a State of the Park Report in 2006. This Report will provide baseline information on current conditions based on 15 indicators developed by the Countryside Agency. The State of the Park Report will enable the National Park Authority to monitor relevant trends and focus on changes that affect the special qualities and character of the Park.

vi) *National Park Visitor Survey*

A comprehensive review of recreational activity has been undertaken in a project lead by the Forestry Commission which has included a survey of visitors commissioned by the Countryside Agency. Analysis of the survey results will provide useful information on the nature of visitors to the National Park.

vii) *Review of the Sustainable Community Strategies*

Sustainable Community Strategies of adjoining district and borough councils provide useful information which will help inform the drafting and review of Development Plan Documents.

viii) *Annual Monitoring Report*

Changes to local, national and regional strategies will be reviewed in this report. This will eventually prompt review of some of the saved policies in the Local Plans.

ix) *Sustainability Appraisal / Strategic Environmental Assessment data*

The baseline data compiled for the SA/SEA process provides a useful source of background information.

x) Specific studies have or will be prepared as part of the evidence base including:

- PPS6 Town Centres Review - substantially completed
- PPG17 Recreation and Open Space Review - substantially completed
- PPG3 Employment Land Review – substantially completed
- Urban Potential Review - underway
- Housing Market Assessment - preliminary results by April 2007
- Affordable Housing Economic Viability Assessment – consultants to be appointed February 2007
- Gypsy and Traveller Site accommodation needs
- Strategic Flood Risk Assessment – to be commissioned

10. Risk Assessment

10.1 The main risk to the process is the potential failure to meet key stages set out in this Local Development Scheme. With current Plans being saved until they are replaced, this builds in some contingency. Progress will also be reviewed annually through the Annual Monitoring Report (see below).

10.2 Other risks include the potential for staff to leave before the end of the project plan together with failure rapidly to fill resulting vacancies. The National Park Authority is implementing a number of measures to improve staff retention (such as regular staff reviews) will the aim of overcoming this potential problem.

10.3 The Local Development Documents will be prepared by the New Forest National Park Authority Policy and Plans team, which consists of four professional planners and a planning technician. Other officers within the

- National Park Authority will be involved in preparing these documents where necessary to provide expert input.
- 10.4 In terms of the capacity of the Authority's Policy and Plans team, where it would be more efficient to use external resources, or where information is seriously deficient and is not available from a partner agency, the Authority will consider the use of specialist consultancy. The National Park Authority also intends to pursue the joint production of a Core Strategy with the New Forest District Council, which should have resource benefits (e.g. joint examination and printing costs).
- 10.5 The National Park Authority is producing a number of documents jointly prepared with neighbouring authorities. While this brings benefits in terms of resource pooling and sharing of expertise, it also presents a number of risks. The main risk revolves around the timetabling for the production of joint documents and the potential for delays in one partner organisation impacting on the progress of the other partner. The failure to reach agreement on policies and proposals within joint documents may also delay progress against the Local Development Scheme targets. Close joint working and liaison between the planning authorities is therefore essential. This risk will be kept under review and only if absolutely necessary the Local Development Scheme would be amended to reflect any resultant delays.
- 11. Arrangements for monitoring and review**
- 11.1 The Authority proposes to produce an Annual Monitoring Report in December each year. This will be prepared in accordance with Government advice set out in the Monitoring Good Practice Guide (2005) and data compilation will be coordinated with New Forest District Council. This document will include an assessment of progress on preparation of the local development documents against the timetable and milestones set out in the Scheme and the extent to which Local Development Framework policies are being achieved. The monitoring report must be submitted to the Secretary of State for approval.

12. Glossary and abbreviations

| | |
|-------------------------|---|
| AMR | Annual Monitoring Report Part of the Local Development Framework, this report will assess the implementation of the Local Development Scheme and the extent to which policies are being successfully implemented. |
| Core Strategy | The Core Strategy will set out the long term vision, objectives and spatial strategy, and provide the framework for the preparation of other Development Plan Documents |
| Development Plan | As set out in Section 38(6) of the Act, an authority's Development Plan consists of the relevant Regional Spatial Strategy and the Development Plan Documents contained within its Local Development Framework. |
| DPD | Development Plan Document Spatial planning documents which are subject to independent examination. Together with the Regional Spatial Strategy, they form the Development Plan for the area. |
| LDD | Local Development Documents The collective term for Development Plan Documents, Supplementary Planning Documents and the Statement of Community Involvement. |
| LDF | Local Development Framework The name for the portfolio of local development documents. It consists of Development Plan Documents, Supplementary Planning Documents, a Statement of Community Involvement, the Local Development Scheme and the Annual Monitoring Report. |
| LDS | Local Development Scheme Sets out the programme for preparing local development documents as part of the Local Development Framework. |
| LSP | Local Strategic Partnership Partnerships of stakeholders who develop ways of involving local people in shaping the future of their neighbourhood and how services are provided. They are often single, non-statutory, multi-agency bodies which aim to bring together locally the public, private, community and voluntary sectors. |
| MPS | Minerals Planning Statement Updated Government advice (gradually replacing Minerals Planning Guidance Notes) |

| | |
|--------------------------------------|--|
| National Park Management Plan | National Park Management Plan The National Park Management Plan seeks to guide the management of the National Park in a way which helps to achieve its statutory purposes and duty, improving the quality of life for those who live or work in the Park, or are visitors to it. |
| PPG | Planning Policy Guidance Note Government advice on planning matters |
| PPS | Planning Policy Statement Updated Government advice (gradually replacing PPGs) |
| Proposals Map | A map indicating the areas to which particular Local Development Framework policies or considerations apply. <u>It must be revised as each new Development Plan Document is adopted and should always reflect the up-to-date planning strategy for the area.</u> |
| RSS | Regional Spatial Strategy The Strategic Plan for the region produced by the Regional Assembly. In the case of the New Forest National Park, this is the emerging South East Plan. |
| SCI | Statement of Community Involvement Sets out the standards which the National Park Authority will achieve with regard to involving local communities in the preparation of local development documents and development control decisions. |
| SEA | Strategic Environmental Assessment Assessment of the broader environmental impacts of the policies and proposals contained within the Local Development Framework (in line with SEA Directive 2002) |
| SPD | Supplementary Planning Document Documents within the Local Development Framework which do not have development plan status but which are a material planning consideration in the determination of applications and appeals |
| SA | Sustainability Appraisal Tool for appraising policies to ensure they reflect sustainable development objectives (i.e. social, environmental and economic factors) and required to be undertaken for all local development documents. |