

# Beaulieu village to Bucklers Hard and back

## Distance

4.5 miles (7km) Return

## Grade

Easy, suitable for pushchairs

## O/S Map covering this walk

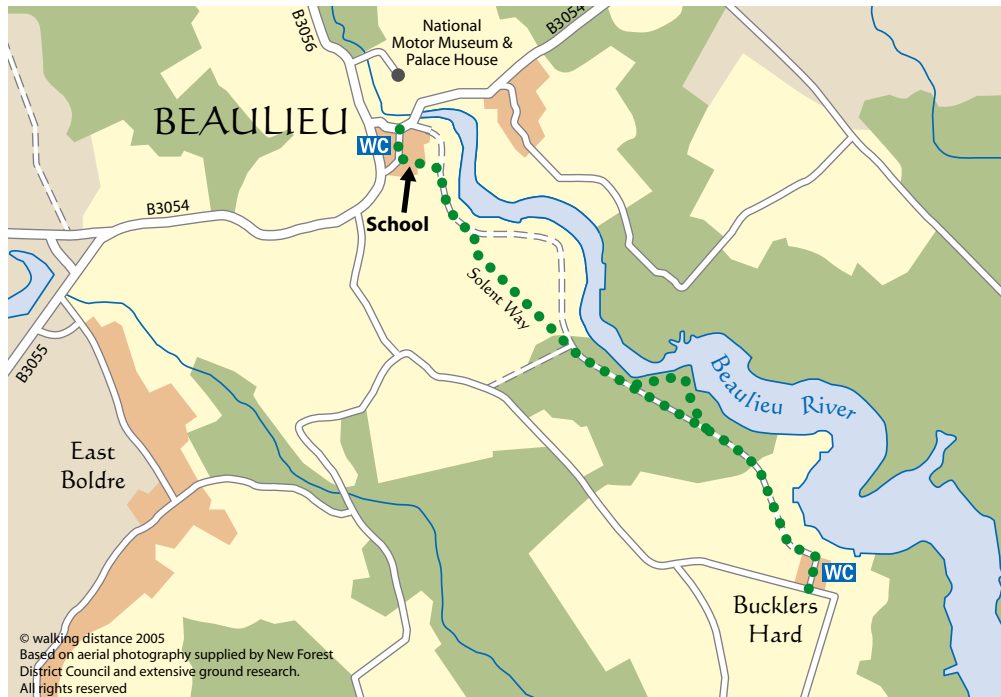
Explorer OL22  
'New Forest'

## Time to complete

2 hours (depending on stay at Bucklers Hard)

## New Forest Tour stop

Brockenhurst Railway Station



# Beaulieu Village to Bucklers Hard

## Route Information

A pleasant walk that takes you from Beaulieu Village to Bucklers Hard along the banks of the Beaulieu river. A lovely walk suitable even with a pushchair.

## Beaulieu village

The Village of Beaulieu is the quintessential English village. Nestling alongside the Beaulieu River, near to Palace House, it has been the home of the Montagu family since 1538. Most of the Village forms part of the 7000 acre Beaulieu Estate, and this walk will tell you more about the Estate, the Village and its people.

## Bucklers Hard

Buckler's Hard is a picturesque 18th century village on the banks of the Beaulieu River in the heart of the New Forest. Historically, it is famed as the place where some of the ships of Nelson's fleet were built.

## Points of Special Interest

Bucklers Hard was a thriving ship-building village in the 18th century. Look for the chapel (still in use) and the Shipwright's Cottage. Both of these are open to the public and well worth visiting.

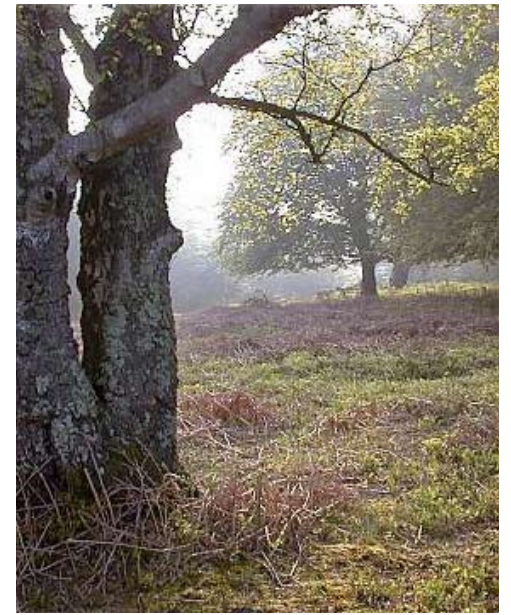
## Visitor Information Centre

Lyndhurst Main car park 023 8028 2269



## Approximately 4.5 miles (7km) Return

- 1 Start at the Montagu Arms Hotel
- 2 Turn up into the main street of the village and take the footpath by Norris's shop. This is signposted 'Bucklers Hard 2 miles'
- 3 The start of the walk is a short lane leading into the school sport's field. Keeping to the edge of the sport's field head to a stile in the right hand corner
- 4 After the stile follow the footpath through the gate marked 'Solent Way'. The Beaulieu River is now visible on your left
- 5 After a short distance you will enter The North Solent Nature Reserve. Continue along this path and soon there will be an open field to your right
- 6 Bear left by the cottage at the top of the field and follow footpath signs to Bucklers Hard
- 7 Then bear right and in a short while bear left
- 8 After approximately 100 yards you have a choice of 2 signposted paths to Bucklers Hard. The choice is a riverside path or a woodland path. Try going out by the woodland path and back by the other



- 9 At the end of whichever path you choose you will come to a boat yard. Cross the road and follow the path signposted 'Solent Way'. This path skirts the boat yard and brings you to the river again with Bucklers Hard ahead of you
- 10 Toilet available, plus shop
- 11 Return to Beaulieu by retracing your steps

**Caution: After heavy rain parts of the path are liable to be very muddy**